

Excellent Integrated System Limited

Stocking Distributor

Click to view price, real time Inventory, Delivery & Lifecycle Information:

[Molex Connector Corporation](#)
[0876963012](#)

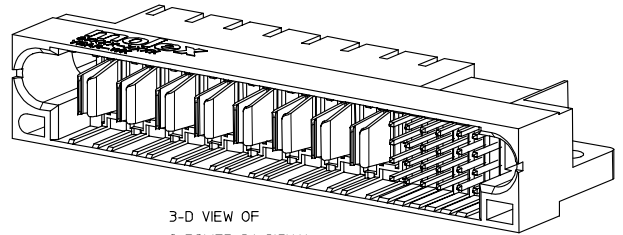
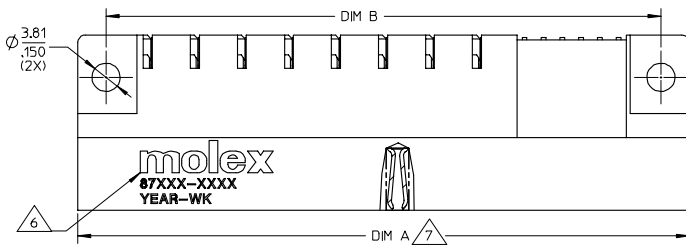
For any questions, you can email us directly:

sales@integrated-circuit.com

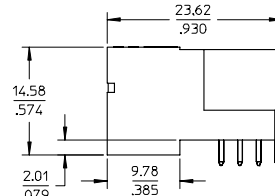
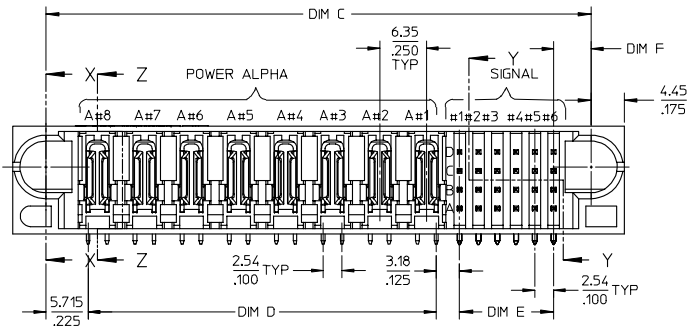
10 9 8 7 6 5 4 3 2 1

F
E
D
C
B
A

F
E
D
C
B
A



3-D VIEW OF
8 POWER-24 SIGNAL
FOR ILLUSTRATION

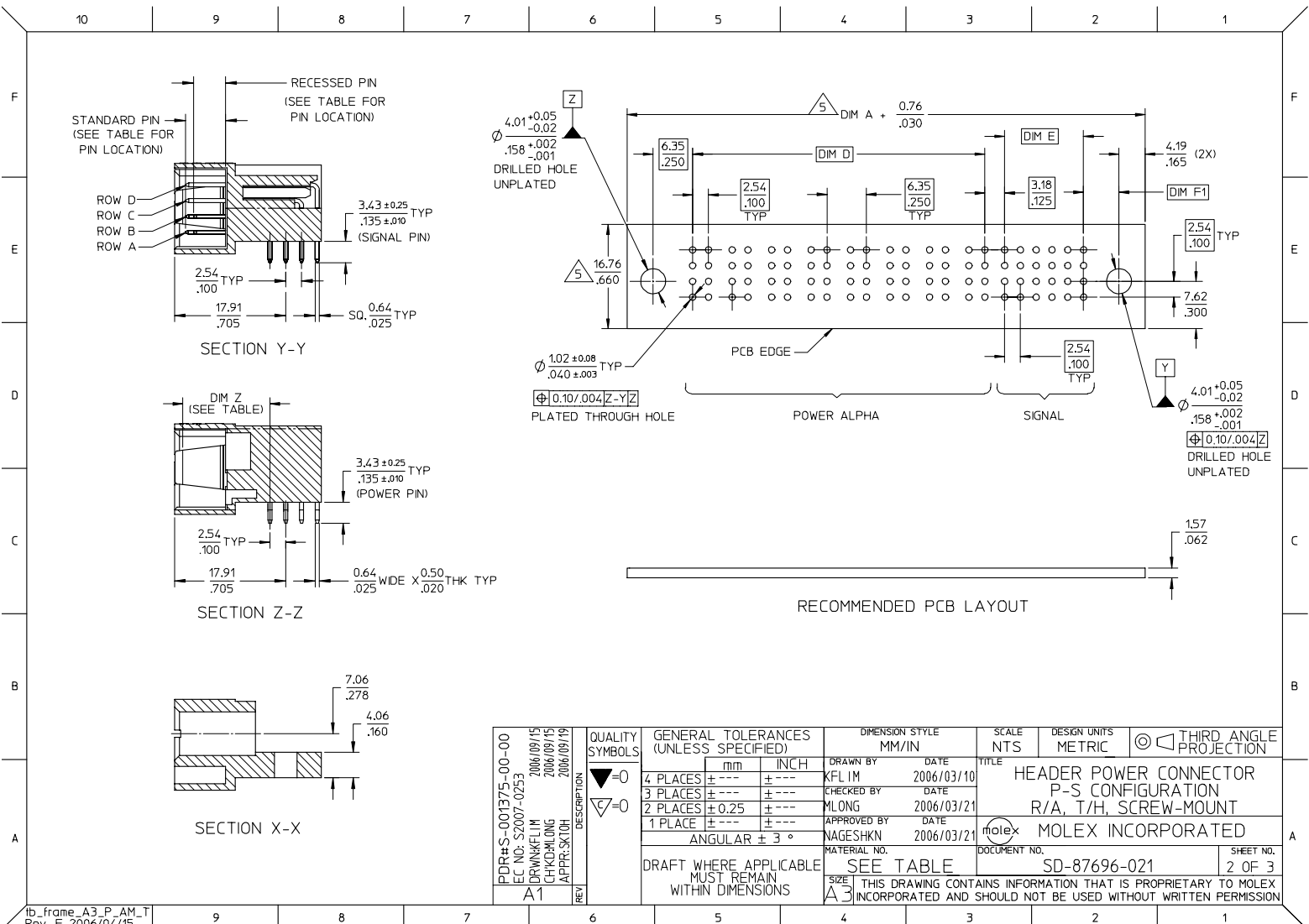


NOTES:

- MATERIALS:** HOUSING - LCP GLASS FILLED, UL94V-0, COLOUR: BLACK
POWER PINS - COPPER ALLOY
SIGNAL PINS - COPPER ALLOY
- FINISHES :** POWER AND SIGNAL PINS :
SELECTIVE GOLD IN THE CONTACT AREA.
THICKNESS = 0.76 MICROMETER / 30 MICROINCH MINIMUM
SELECTIVE TIN ALLOY IN THE PC TAIL AREA
THICKNESS = 2.54 MICROMETER / 100 MICROINCH MINIMUM
NICKEL OVERALL
- PRODUCT SPECIFICATION :** PS-87631-006
- SEE SHEET 2 FOR RECOMMENDED PCB LAYOUT AND THICKNESS.
- COMPONENT STAY AWAY ZONE FROM CONNECTOR.
- MANUFACTURER LOGO, PART NUMBER AND YEAR-WEEK CODE.
- 8 POWER ALPHA - 24 SIGNAL IS SHOWN FOR ILLUSTRATION .
CONNECTOR CONFIGURATION IS AVAILABLE UP TO 203MM/INCH.
PLEASE CONTACT MOLEX SALES PERSONNEL FOR OTHER
CONFIGURATION AND OPTION NEEDED.

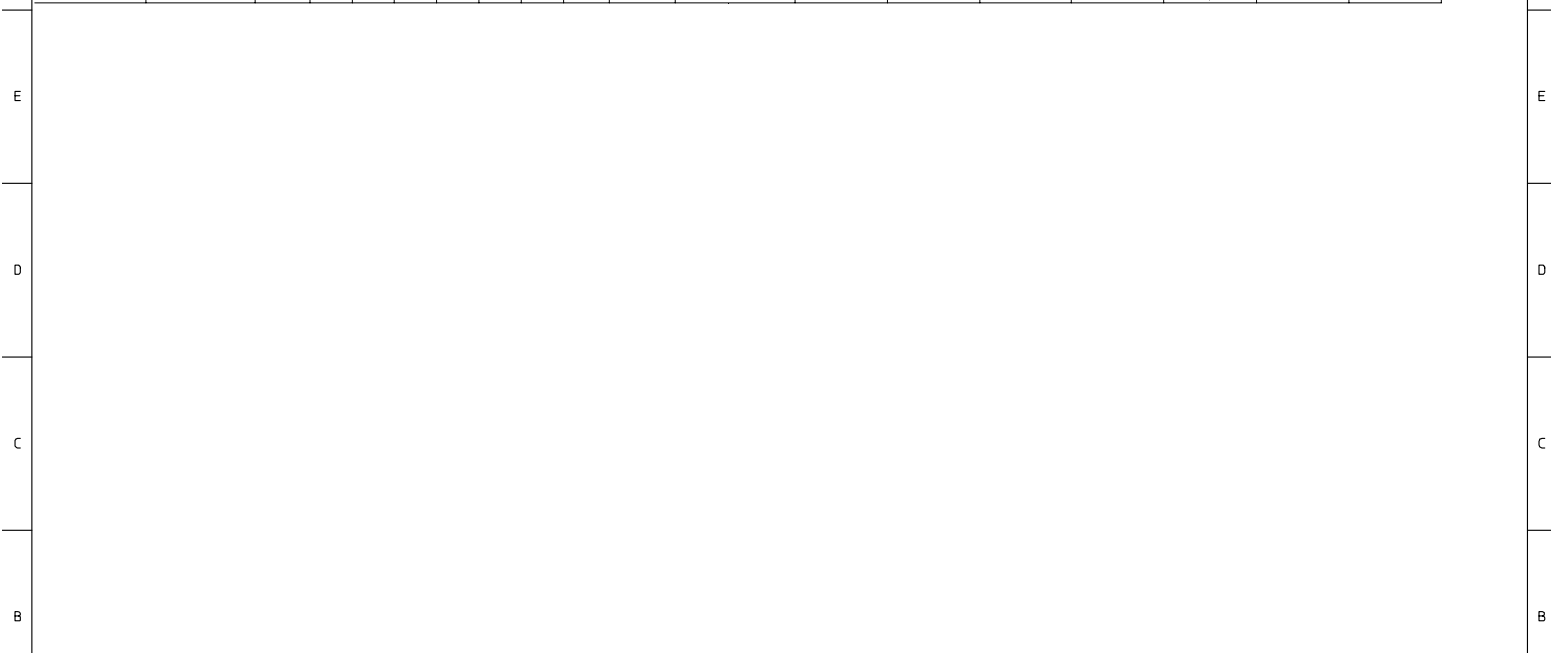
PDR#S-001375-00-00 EC NO: S2007-0253 DRINKELIM 2006/09/15 CHKHOLONG 2006/09/15 APPR:SKLOH 2006/09/15 A1	QUALITY SYMBOLS ▽=0 ▽=0	GENERAL TOLERANCES (UNLESS SPECIFIED)		DIMENSION STYLE MM/IN	SCALE NTS	DESIGN UNITS METRIC	THIRD ANGLE PROJECTION		
		4 PLACES ± --- ± ---	3 PLACES ± --- ± ---	2 PLACES ± 0.25 ± ---	1 PLACE ± --- ± ---	DRAWN BY KFL IM	DATE 2006/03/10	TITLE HEADER POWER CONNECTOR P-S CONFIGURATION R/A, T/H, SCREW-MOUNT	
		ANGULAR ± 3 °				CHECKED BY MLONG	DATE 2006/03/21	MOLEX INCORPORATED	
		DRAFT WHERE APPLICABLE MUST REMAIN WITHIN DIMENSIONS				APPROVED BY NAGESHKN	DATE 2006/03/21	MATERIAL NO. SEE TABLE	DOCUMENT NO. SD-87696-021
SIZE A3 THIS DRAWING CONTAINS INFORMATION THAT IS PROPRIETARY TO MOLEX INCORPORATED AND SHOULD NOT BE USED WITHOUT WRITTEN PERMISSION									

9 8 7 6 5 4 3 2 1



PDR#S-001375-00-00 EC NO: S2007-0253 DRW:KFLIM 2006/03/15 CHK:DLONG 2006/03/15 APPR:SKLOH 2006/03/15 A1	QUALITY SYMBOLS ▽=0 ▽=0	GENERAL TOLERANCES (UNLESS SPECIFIED)		DIMENSION STYLE MM/IN		SCALE	DESIGN UNITS	THIRD ANGLE PROJECTION
		4 PLACES	± .15	± .005	MM/IN	DATE	TITLE HEADER POWER CONNECTOR P-S CONFIGURATION R/A, T/H, SCREW-MOUNT MOLEX INCORPORATED	
		3 PLACES	± .15	± .005	DATE			
		2 PLACES	± 0.25	± .005	DATE			
1 PLACE	± .15	± .005	DATE					
ANGULAR ± 3°		DRAFT WHERE APPLICABLE MUST REMAIN WITHIN DIMENSIONS		MATERIAL NO. SEE TABLE		DOCUMENT NO. SD-87696-021	SHEET NO. 2 OF 3	
THIS DRAWING CONTAINS INFORMATION THAT IS PROPRIETARY TO MOLEX INCORPORATED AND SHOULD NOT BE USED WITHOUT WRITTEN PERMISSION								

PART NUMBER	P-S CONFIGURATION		DIMENSIONS								POWER BLADE OPTIONS		STANDARD PIN LOCATION			RECESSED PIN LOCATION			PACKAGING
	POWER	SIGNAL	DIM A	DIM B	DIM C	DIM D	DIM E	DIM F	DIM F1	TYPE	DIM Z ±0.13/.005	ROW	COLUMN	LENGTH	ROW	COLUMN	LENGTH		
87696-3010	8	28	85.09 3.35	77.47 3.05	76.20 3.00	46.99 1.85	15.24 .600	5.08 .200	5.72 .225	LONG CONTACT	14.12/.556	D C B A	NIL NIL NIL 1,2,3,4 1-6	6.86/.270	D C B A	1-7 1-7 1-7 5,6,7 NIL	5.59/.220	TRAY	
87696-3012	2	24	44.45 1.75	36.83 1.45	35.56 1.40	8.89 0.35	12.70 .500	5.08 .200	5.72 .225			D C B A	NIL 1,3,4,5,6 1-6 1-6		D C B A	NIL 2 NIL NIL			



PDR#S-001375-00-00 EC NO: S2007-0253 2006/09/15 DRINKELIM 2006/09/15 CHKDRLONG 2006/09/15 APPRSKLOH	QUALITY SYMBOLS ▽=0 ▽=0	GENERAL TOLERANCES (UNLESS SPECIFIED)		DIMENSION STYLE	SCALE	DESIGN UNITS	THIRD ANGLE PROJECTION	
		4 PLACES ± --- ± ---	mm	INCH	MM/IN	NTS		METRIC
		3 PLACES ± --- ± ---	DRAWN BY: KFLIM		DATE: 2006/03/10	TITLE: HEADER POWER CONNECTOR P-S CONFIGURATION R/A, T/H, SCREW-MOUNT		
		2 PLACES ± 0.25 ± ---	CHECKED BY: MLONG		DATE: 2006/03/21	MOLEX INCORPORATED		
1 PLACE ± --- ± ---	APPROVED BY: NAGESHKN		DATE: 2006/03/21	MATERIAL NO. SEE TABLE	DOCUMENT NO. SD-87696-021	SHEET NO. 3 OF 3		
DRAFT WHERE APPLICABLE MUST REMAIN WITHIN DIMENSIONS		THIS DRAWING CONTAINS INFORMATION THAT IS PROPRIETARY TO MOLEX INCORPORATED AND SHOULD NOT BE USED WITHOUT WRITTEN PERMISSION						