

## Excellent Integrated System Limited

Stocking Distributor

Click to view price, real time Inventory, Delivery & Lifecycle Information:

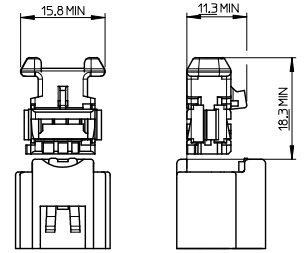
[Molex Connector Corporation](#)  
[0987861018](#)

For any questions, you can email us directly:  
[sales@integrated-circuit.com](mailto:sales@integrated-circuit.com)

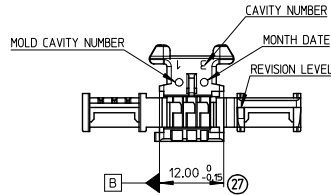
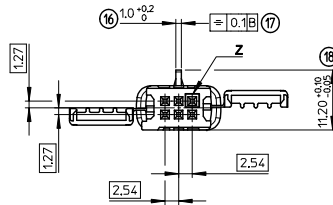
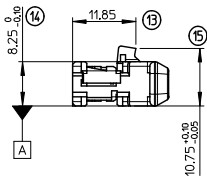
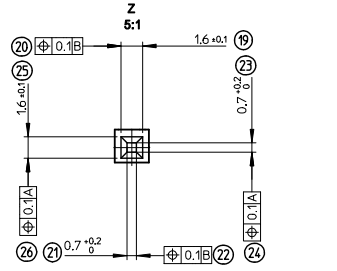
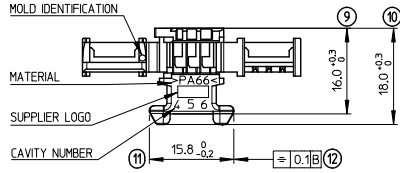
**CODINGS**

<b>P/N#:</b> 0987861011	<b>P/N#:</b> 0987861019	<b>P/N#:</b> 0987861018	<b>P/N#:</b> 0987861016
<b>COLOR:</b> BLACK	<b>COLOR:</b> BROWN	<b>COLOR:</b> GREY	<b>COLOR:</b> BLUE

**MINIMUM FREE SPACE FOR ASSEMBLY**



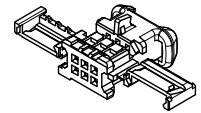
NECESSARY VOLUME FOR THE HOUSING ASSEMBLY.  
ALLOW AN ADDITIONAL VOLUME FOR THE UNMATING



**NOTES:**

- 1- MATERIAL : POLYAMIDE (PA66) UNFILLED UL94V-2
- 2- USE WITH : 98658 (MOX 0.63 TERMINAL)
- 3- APPLICATION SPECIFICATION : AS-98787-001
- 4- MATE WITH : SERIES 98780 (HEADER)
- 5- WEIGHT : 1,060 g

**ISO VIEW**



<b>REVISED</b> EC NO: GZ013-0071 DRAWN: DUBOISSANTOS 2011/02/22 CHECKED: AHERBELIN 2012/09/17 APPROVED: JPLESSIS 2012/11/23 DESCRIPTION:	GENERAL TOLERANCES (UNLESS SPECIFIED)		DIMENSION STYLE MM ONLY		SCALE 2:1	DESIGN UNITS METRIC	FIRST ANGLE PROJECTION	
	4 PLACES ± --- ± ---	3 PLACES ± --- ± ---	2 PLACES ± 0.05 ± ---	1 PLACE ± 0.1 ± ---	0 PLACE ± --- ± ---	TITLE: MOX RCPT HSG 0.635 CEM 6CKT		
	ANGULAR ± 2°					MATERIAL NO. SEE CHART		
	DRAFT WHERE APPLICABLE MUST REMAIN WITHIN DIMENSIONS					DOCUMENT NO. SD-98786-001		
INCORPORATED AND SHOULD NOT BE USED WITHOUT WRITTEN PERMISSION					SHEET NO. 1 OF 1			