

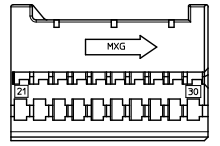
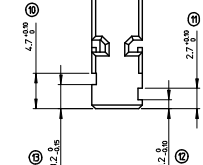
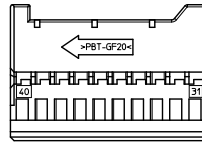
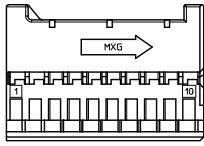
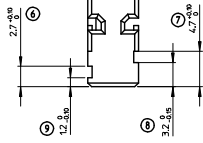
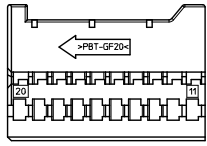
## Excellent Integrated System Limited

Stocking Distributor

Click to view price, real time Inventory, Delivery & Lifecycle Information:

[Molex Connector Corporation](#)  
[0989821016](#)

For any questions, you can email us directly:  
[sales@integrated-circuit.com](mailto:sales@integrated-circuit.com)



MOLEX P/N : 0989821016

DESCRIPTION : MOX Rcpt Module 0.635 Blu 20CKT

COLOR : BLUE

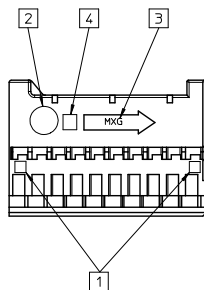
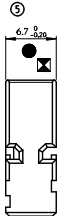
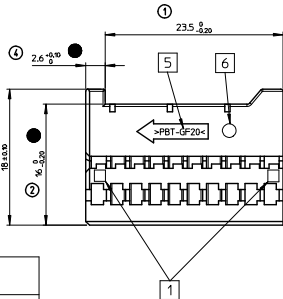
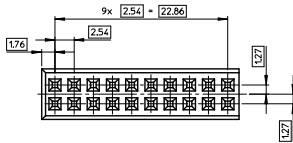
MOLEX P/N : 0989821010

DESCRIPTION : MOX Rcpt Module 0.635 Wht 20CKT

COLOR : WHITE

MATERIAL : >PBT-GF20<

WEIGHT : 1.622 g



- FOR ILLUSTRATION PURPOSE, THE MOX RCPT MODULE SHOWN IS THE BLUE CODING P/N 0989821016. SEE CODING CHART FOR OTHER COLOR VERSION.
- PRODUCT QUALIFIED ACCORDING TO PSA STANDARD: 9629764699A.
- APPLICATION SPECIFICATION: RAS-98982-001
- INTERFACE DRAWING IS THE PROPERTY FROM PSA: 9633297199.
- USE WITH MOX TERMINAL FOLLOWING SD-98658-00A.
- THESE MODULES FIT INTO MOX MOUNTING HOUSING RECEPTACLE 40CKT P/N :
  - 0989821020
  - 0989821021
  - 0989821022
  - 0989821028



1:1

MARKING :

- 1 - CAVITY NUMBER
- 2 - DATUM MONTH/YEAR
- 3 - MOLEX MARK
- 4 - IMPRESSION MARK
- 5 - RAW MATERIAL
- 6 - REVISION LEVEL

INDICATION DIMENSIONS S.P.C DENOTES S.P.C DIMENSIONS  
 INDICATION DIMENSIONS CRITIQUES DENOTES CRITICAL DIMENSIONS  
 INDICATION DIMENSIONS FONCTIONNELLES DENOTES FUNCTIONAL DIMENSIONS

QUANTITE PAR FEUILLE INDIVIDUELLE  
 QUANTITY PER INDIVIDUAL SHEET

1 0 3

FIRST RELEASE EC NG 02008-0996 2007/10/15 DR/ANN/POUCHAUD 2007/10/15 CH/KOFTIGEL 2007/10/15 APPROVED/STICKEIR 2007/10/15 A	QUALITY SYMBOLS	GENERAL TOLERANCES (UNLESS SPECIFIED)	DIMENSION STYLE	SCALE	DESIGN UNITS	THIRD ANGLE PROJECTION	
	▽=0	mm INCH	MM ONLY	4:1	METRIC	☉	
		4 PLACES ±--- ±---	DRAWN BY DATE	TITLE			
		3 PLACES ±--- ±---	POUCHAUD 2007/09/07	MOX RCPT MODULE 20CKT			
	2 PLACES ± 0.05 ±---	CHECKED BY DATE	MOLEX INCORPORATED				
	1 PLACE ± 0.10 ±---	YIGEL 2007/09/07	DOCUMENT NO. SD-98982-001				
	ANGULAR ± 2°	APPROVED BY DATE	SHEET NO. 1 OF 1				
		STICKEIR 2007/09/10	INCORPORATED AND SHOULD NOT BE USED WITHOUT WRITTEN PERMISSION				