

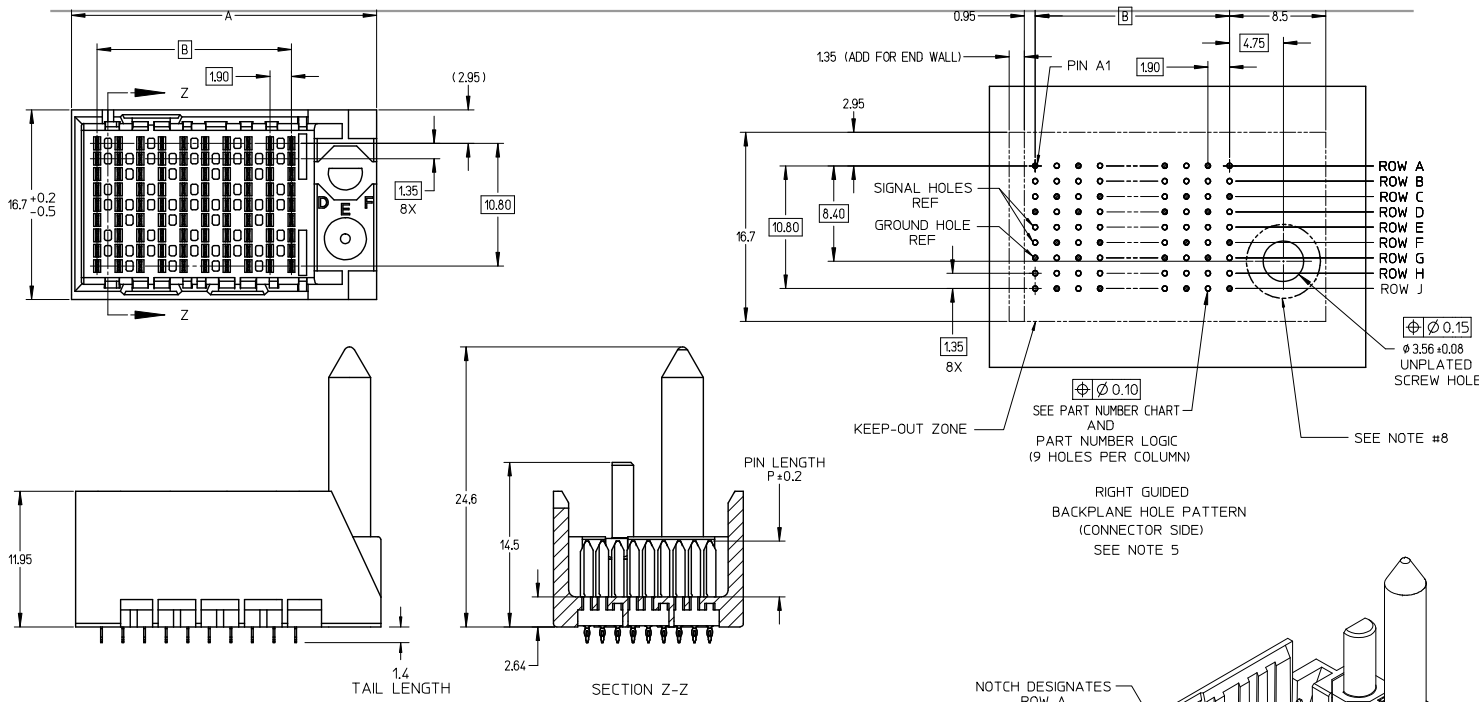
Excellent Integrated System Limited

Stocking Distributor

Click to view price, real time Inventory, Delivery & Lifecycle Information:

[Molex Connector Corporation](#)
[1705259607](#)

For any questions, you can email us directly:
sales@integrated-circuit.com

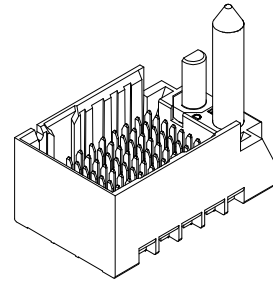


- NOTES:
- MATERIALS: HOUSING - LIQUID CRYSTAL POLYMER (LCP)
GLASS-FILLED, UL94V-0
TERMINALS - HIGH PERFORMANCE COPPER ALLOY
 - FINISH: 30μ INCH MIN GOLD IN CONTACT AREA.
SELECTIVE MATTE TIN ON PCB TAILS, NICKEL OVERALL.
 - REFER TO MOLEX PRODUCT SPECIFICATION PS-170540-999 FOR PERFORMANCE SPECIFICATIONS AND ADDITIONAL PCB INFORMATION.
 - THIS PART CONFORMS TO CLASS B REQUIREMENTS OF MOLEX COSMETIC SPEC PS-45499-002.
 - *THESE DIMENSIONS REPRESENT THE AREA NEEDED TO ACCOMMODATE CONNECTOR INSERTION AND REPAIR ON THE PC BOARD. THIS IS REFERRED TO AS THE "CONNECTOR KEEP OUT ZONE" AND DOES NOT REPRESENT THE ACTUAL PERIMETER OF THE CONNECTOR. WHEN LAYING OUT A PC BOARD FOR CONNECTORS STACKED TOGETHER, USE A 1.9mm PROGRESSION."
 - PACKAGE PER: PK-70873-758.
 - SEE SHEETS 2 & 3 FOR PART NUMBERS AND BOARD RELATIONSHIPS.
 - FOR GROUNDED GUIDE PINS USE $\phi 3.56 \pm 0.08$ (PTH) $\phi 3.66$ (DRILL) & $\phi 6.5$ (PAD).
 - REFER TO MOLEX PCB ROUTING GUIDE AS-76060-990 FOR ANTIPAD AND ROUTING RECOMMENDATIONS.
 - CONNECTORS SUPPLIED WITH A 2-56 UNC-2A SCREW. MOLEX P/N 73774-1000.
 - MINIMUM CIRCUIT BOARD THICKNESS: 1.0mm
 - KEEP OUT ZONE FOR BP HOUSING LENGTH INCLUDES AN ADDITIONAL 1.0mm TO ACCOMMODATE FOR SPACE REQUIRED BY DC FRONT HOUSING.

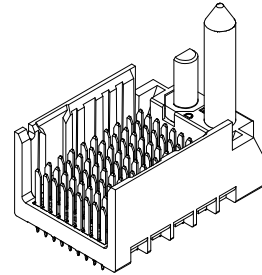
ADD SCREW P/N EC NO: UCF2015-0242 DRW:DMORGAN 2014/07/21 CHK:DMORFF 2014/07/21 APPR:SMILLER 2014/08/04 D2 REV	QUALITY SYMBOLS 	GENERAL TOLERANCES (UNLESS SPECIFIED)		DIMENSION STYLE		SCALE	DESIGN UNITS	THIRD ANGLE PROJECTION		
				MM ONLY		4:1	METRIC			
				mm	INCH	DRAWN BY	DATE	TITLE		
				4 PLACES ±	±	J.BINGHAM	2010/05/12	IMPACT 3-PAIR 85-OHM RIGHT GUIDED BACKPLANE SALES ASSEMBLY DRAWING		
		3 PLACES ±	±	CHECKED BY	DATE					
		2 PLACES ±	±	JLAURX	2010/05/12					
		1 PLACE ±	±	APPROVED BY	DATE	DOCUMENT NO.				
		0 PLACE ±	±	JLAURX	2013/01/28	SD-170525-0003				
		ANGULAR ±1/2°		MATERIAL NO.		SHEET NO.				
		DRAFT WHERE APPLICABLE MUST REMAIN WITHIN DIMENSIONS		SEE CHART		1 OF 3				
		THIS DRAWING CONTAINS INFORMATION THAT IS PROPRIETARY TO MOLEX INCORPORATED AND SHOULD NOT BE USED WITHOUT WRITTEN PERMISSION								

PART NUMBER CHART

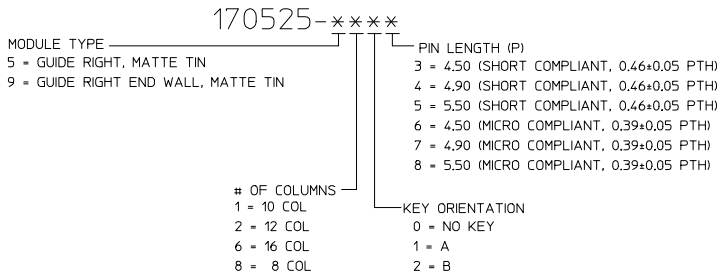
MATERIAL NUMBER	# OF COLUMNS	# OF DIFF PAIR	DIM 'A'	DIM 'B'	GUIDE RIGHT END WALL OPTION
170525-98**	8	24	23.1	13.30	
170525-91**	10	30	26.9	17.10	
170525-92**	12	36	30.7	20.90	
170525-96**	16	48	38.3	28.50	



MATERIAL NUMBER	# OF COLUMNS	# OF DIFF PAIR	DIM 'A'	DIM 'B'	GUIDE RIGHT OPEN WALL OPTION
170525-58**	8	24	21.7	13.30	
170525-51**	10	30	25.5	17.10	
170525-52**	12	36	29.3	20.90	
170525-56**	16	48	36.9	28.50	

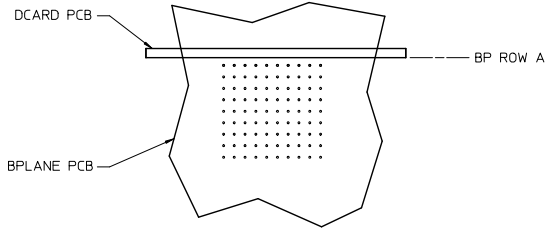


PART NUMBER LOGIC

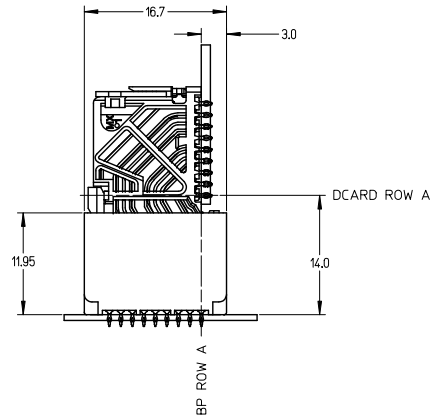
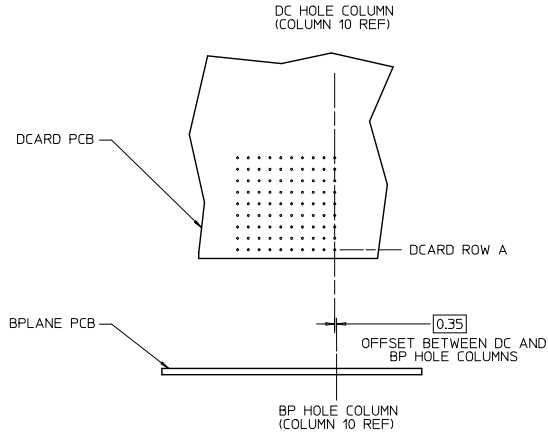


SEE SHEET 1 IEC NO: UCP2015-0242 DRAWING NO: 2014/07/24 CHKD BY: CHIKORPOFF APPR: SMILLER DATE: 2014/08/04	QUALITY SYMBOLS ▽=0 ▽=0 ▽=0	GENERAL TOLERANCES (UNLESS SPECIFIED)		DIMENSION STYLE MM ONLY		SCALE 2.5:1	DESIGN UNITS METRIC	THIRD ANGLE PROJECTION	
		4 PLACES ±---	±---	DRAWN BY JB INGHAM	DATE 2010/05/12	TITLE IMPACT 3-PAIR 85-OHM RIGHT GUIDED BACKPLANE SALES ASSEMBLY DRAWING			
		3 PLACES ±---	±---	CHECKED BY JLAURX	DATE 2010/05/12	APPROVED BY JLAURX			
		2 PLACES ±0.13	±---	APPROVED BY JLAURX	DATE 2013/01/28	MATERIAL NO. SEE CHART			
1 PLACE ±0.25	±---	ANGULAR ±1/2°		DOCUMENT NO. SD-170525-0003		SHEET NO. 2 OF 3		DRAFT WHERE APPLICABLE MUST REMAIN WITHIN DIMENSIONS	
0 PLACE ±---	±---	THIS DRAWING CONTAINS INFORMATION THAT IS PROPRIETARY TO MOLEX INCORPORATED AND SHOULD NOT BE USED WITHOUT WRITTEN PERMISSION							

13 12 11 10 9 8 7 6 5 4 3 2 1



IMPACT 3 PAIR
BOARD RELATIONSHIPS



SEE SHEET 1 EC NO: UCP2015-0242 DRAWING NO: 2014/07/21 CHKDRPOFF: 2014/07/21 APPR:SMILLER 2014/08/04 DESCRIPTION:	QUALITY SYMBOLS	GENERAL TOLERANCES (UNLESS SPECIFIED)	DIMENSION STYLE	SCALE	DESIGN UNITS	THIRD ANGLE PROJECTION	
	∇=0 ∇=0 ∇=0	mm INCH 4 PLACES ± --- ± --- 3 PLACES ± --- ± --- 2 PLACES ± 0.13 ± --- 1 PLACE ± 0.25 ± --- 0 PLACE ± --- ± ---	MM ONLY	3:1	METRIC	TITLE: IMPACT 3-PAIR 85-OHM RIGHT GUIDED BACKPLANE SALES ASSEMBLY DRAWING molex	
	DRAFT WHERE APPLICABLE MUST REMAIN WITHIN DIMENSIONS	ANGULAR ±1/2° SEE CHART	DRAWN BY: JBINGHAM CHECKED BY: JLaurX APPROVED BY: JLaurX	DATE: 2010/05/12 DATE: 2010/05/12 DATE: 2013/01/28	MATERIAL NO. SEE CHART	DOCUMENT NO. SD-170525-0003	SHEET NO. 3 OF 3
	REV: D2	SIZE: C	THIS DRAWING CONTAINS INFORMATION THAT IS PROPRIETARY TO MOLEX INCORPORATED AND SHOULD NOT BE USED WITHOUT WRITTEN PERMISSION				

1b_frame_C_P_AM_T Rev. G 2012/01/11 12 11 10 9 8 7 6 5 4 3 2 1