

Excellent Integrated System Limited

Stocking Distributor

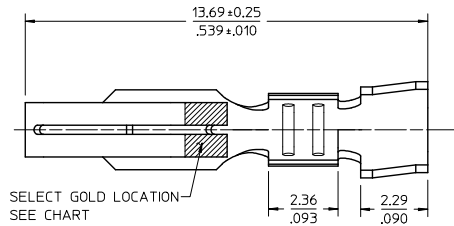
Click to view price, real time Inventory, Delivery & Lifecycle Information:

[Molex Connector Corporation](#)
[1721601802](#)

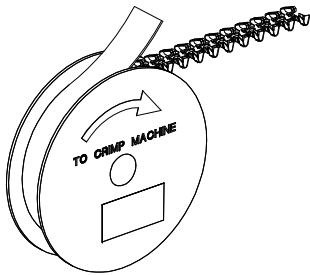
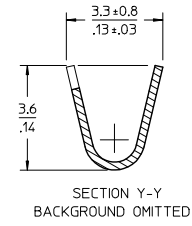
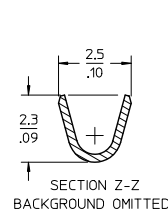
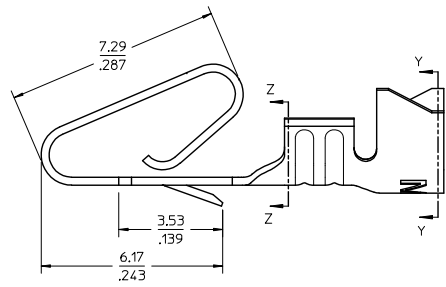
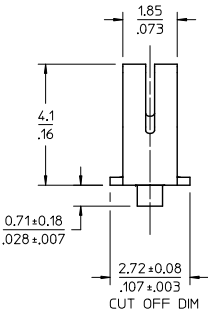
For any questions, you can email us directly:

sales@integrated-circuit.com

10 9 8 7 6 5 4 3 2 1



- NOTES:
1. MATERIAL: PHOS BRONZE OR BRASS. SEE CHART
 2. FINISH-1: PREPLATED OVERALL TIN: 0.00254/.000100 MIN
FINISH-2: SELECT GOLD: 0.00038/.000015 MIN OVER
0.00127/.000050 MIN NICKEL OVERALL
 3. PRODUCT SPECIFICATION: PS-172160-0001
 4. PACKAGING SPECIFICATION: PK-172160-0001
 5. COSMETIC SPECIFICATION: PS-45499-0002 CLASS B
 6. TERMINAL ACCEPTS WIRE AWG
18-20 AWG WIRE WITH 2.79/.110 MAX INSULATION DIA.
 7. TERMINAL FOR USE WITH HOUSING 172159



MATERIAL NO	WIRE SIZE	MATERIAL	FINISH
172160-1802	18-20 AWG	PHOS BRONZE	SELECT GOLD
172160-1803	18-20 AWG	PHOS BRONZE	TIN
172160-1805	18-20 AWG	BRASS	SELECT GOLD
172160-1806	18-20 AWG	BRASS	TIN

ADD METRIC DIMS. EC NO: IUCP2015-0951 DRAWN BY: 2014/09/03 CHK: 2014/09/03 APPR: 2014/09/10	DESCRIPTION REV	GENERAL TOLERANCES (UNLESS SPECIFIED)		DIMENSION STYLE MM/IN		SCALE 8:1	DESIGN UNITS INCH	THIRD ANGLE PROJECTION	
		4 PLACES ± --- ± --- 3 PLACES ± --- ± .010 2 PLACES ± 0.25 ± .015 1 PLACE ± 0.38 ± --- 0 PLACE ± --- ± ---	mm INCH --- --- --- --- --- --- --- --- --- ---	DRAWN BY: KSAMIEC CHECKED BY:	DATE: 2013/08/23 DATE:	TITLE EDGEMATE CRIMP TERMINALS 3.96/.156 CENTER FOR HOUSING 172159			
		ANGULAR ± 1/2° DRAFT WHERE APPLICABLE MUST REMAIN WITHIN DIMENSIONS		APPROVED BY: JCOMERC MATERIAL NO: SEE CHART	DATE: 2013/11/14	DOCUMENT NO. SD-172160-0000			
		SIZE B		THIS DRAWING CONTAINS INFORMATION THAT IS PROPRIETARY TO MOLEX INCORPORATED AND SHOULD NOT BE USED WITHOUT WRITTEN PERMISSION		SHEET NO. 1 OF 1			

9 8 7 6 5 4 3 2 1