

Excellent Integrated System Limited

Stocking Distributor

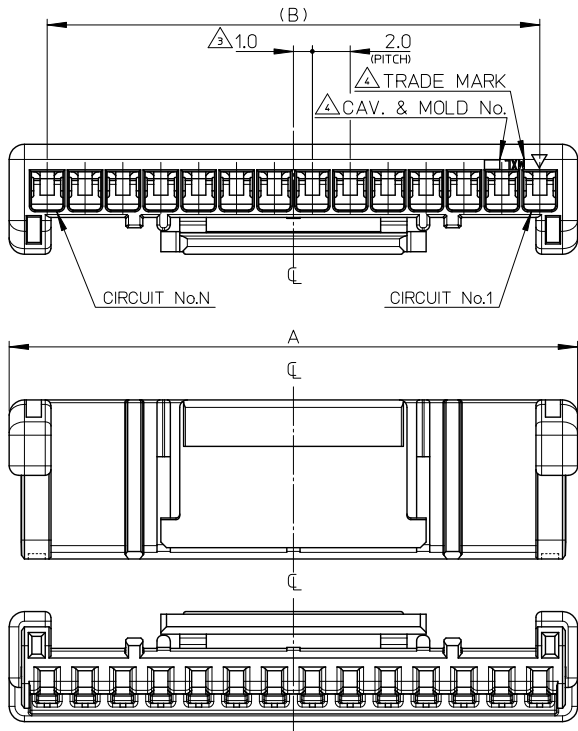
Click to view price, real time Inventory, Delivery & Lifecycle Information:

[Molex Connector Corporation](#)
[5036581500](#)

For any questions, you can email us directly:

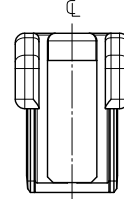
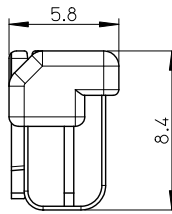
sales@integrated-circuit.com

10 9 8 7 6 5 4 3 2 1



NOTES:

- 適合ターミナルシリーズ:503657シリーズ
APPLICABLE TERMINAL:503657 SERIES
- 適合相手:503660シリーズ
MATE WITH:503660 SERIES
- 偶数極に適用。
APPLY FOR EVEN CIRCUIT.
- トレードマーク:MXLにて表示。
キャビティ番号:1桁から2桁の数字にて表示。 金型番号:アルファベット1文字にて表示。
TRADE MARK IS FORMED BY MXL.
AND BY 1 - 2 DIGIT NUMBER (TO CAVITY No.)
AND BY 1 LETTER OF ALPHABET (TO MOLD No.)
- 本製品のプラスチック部に黒点等が確認される場合や、色合いが異なる場合がありますが、製品性能に影響は御座いません。
THERE IS NO INFLUENCE IN THE PRODUCT PERFORMANCE THOUGH THE BLACK SPOT ETC.
MIGHT BE CONFIRMED TO THE PLASTIC PART OF THIS PRODUCT AND
THE SHADE MIGHT BE DIFFERENT.
- 製品の取扱いについては、コネクタ取扱説明書(AS-503658-001)を参照願います。
PLEASE REFER TO INSTRUCTION MANUAL(AS-503658-001).
- ELV及びRoHS適合品
ELV AND RoHS COMPLIANT.



2.3極形状(1ロック)

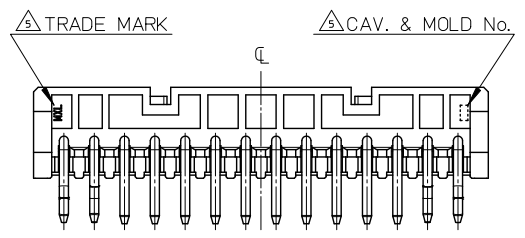
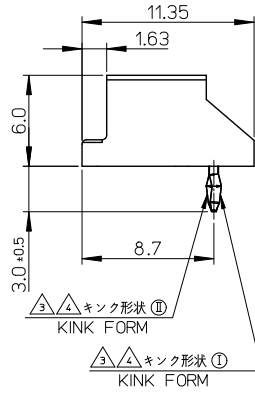
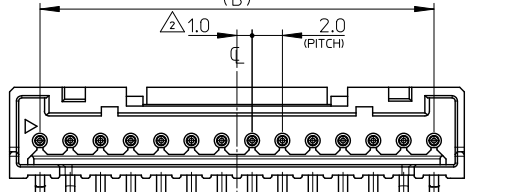
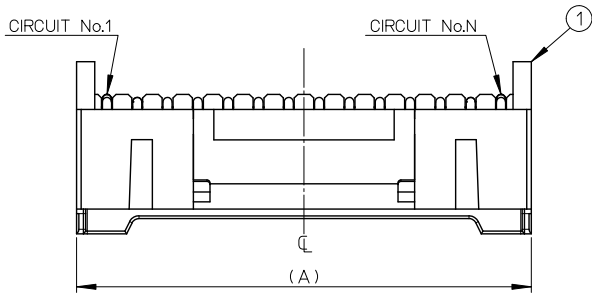
FIGURE OF 2.3 CIRCUIT (1 LOCK)

28	32	503658	-1500	503658-**-00	15
26	30		-1400		14
22	26		-1200		12
18	22		-1000		10
14	18		-0800		8
10	14		-0600		6
8	12		-0500		5
6	10	503658	-0400		4
B	A	ORDER NO.	CONNECTOR SERIES NO.	CIRCUIT	

部品 PART	材質 MATERIAL
ハウジング HOUSING	ポリエステル(PBT) UL94V-0 POLYESTER UL94V-0 色:ナチュラル(白) COLOR: NATURAL(WHITE)

REVISED IEC NO. J2011-0238 DRAWN:SKUROSE 2010/08/16 CHIKIDAKAKAWA 2010/08/16 APPROX:NUKITA 2010/08/19 REV: A	GENERAL TOLERANCES (UNLESS SPECIFIED)	DIMENSION STYLE MM ONLY	SCALE 5:1	DESIGN UNITS METRIC	THIRD ANGLE PROJECTION
	10 UNDER ±0.2	DRAWN BY SSAT002	DATE 2010/08/06	TITLE 2.0 W/B CONN. SINGLE REC. CRIMP HS'G	
	10 OVER 30 UNDER ±0.25	CHECKED BY KASAKAWA	DATE 2010/08/16	MATERIAL NO. SEE CHART	
	30 OVER ±0.3	APPROVED BY NUKITA	DATE 2010/08/16	DOCUMENT NO. SD-503658-001	
ANGULAR ±1°		MATERIAL NO. SEE CHART			
DRAFT WHERE APPLICABLE WITHIN DIMENSIONS		THIS DRAWING CONTAINS INFORMATION THAT IS PROPRIETARY TO MOLEX INCORPORATED AND SHOULD NOT BE USED WITHOUT WRITTEN PERMISSION			

10 9 8 7 6 5 4 3 2 1



① △△キック形状① KINK FORM
 ② △△キック形状② KINK FORM
 △△キック形状① KINK FORM
 △△キック形状① KINK FORM

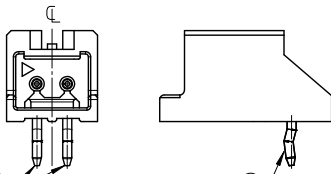
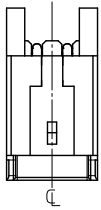
28	32	503660	-1510	15	503660-**10 ボス無(WITHOUT BOSS)
26	30		-1410	14	
22	26		-1210	12	
18	22		-1010	10	
14	18		-0810	8	
10	14		-0610	6	
8	12		-0510	5	
6	10	503660	-0410	4	
B	A	TRAY PACKAGE	ORDER NO.	CIRCUIT	CONNECTOR SERIES No.

No.	部品 PART	材質 MATERIAL
①	ハウジング HOUSING	ポリエステル(PBT), ガラス充填, UL94V-0 POLYESTER, GLASS FILLED, UL94V-0 色: ナチュラル(白)
②	ピン PIN	黄銅, 錫めっき BRASS, Sn PLATED

REV	DESCRIPTION	DATE	APPROVED
REVISED	EC NO. J2012-0117	2011/07/25	
	DRW:SSAT002	2011/07/25	
	CHK:KASAKAWA	2011/07/25	
	APP:NUKITA	2011/07/29	

GENERAL TOLERANCES (UNLESS SPECIFIED)		DIMENSION STYLE	SCALE	DESIGN UNITS	THIRD ANGLE PROJECTION
10 UNDER	±0.2	MM ONLY	4:1	METRIC	THIRD ANGLE PROJECTION
10 OVER 30 UNDER	±0.25				
30 OVER	±0.3				
ANGULAR	±1°				
DRAFT WHERE APPLICABLE MUST REMAIN WITHIN DIMENSIONS					
DRAWN BY SSAT002		DATE 2010/08/06		TITLE 2.0 W/B CONN. SINGLE DIP R/A PLUG HS'G ASS'Y WITHOUT BOSS	
CHECKED BY KASAKAWA		DATE 2010/08/16		MOLEX INCORPORATED	
APPROVED BY NUKITA		DATE 2010/08/16		MATERIAL NO. SEE CHART	
				DOCUMENT NO. SD-503660-001	
				SHEET NO. 1 OF 3	
THIS DRAWING CONTAINS INFORMATION THAT IS PROPRIETARY TO MOLEX INCORPORATED AND SHOULD NOT BE USED WITHOUT WRITTEN PERMISSION					

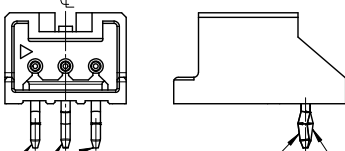
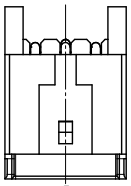
10 9 8 7 6 5 4 3 2 1



△キック形状 ①
KINK FORM

△キック形状 ①
KINK FORM

FIGURE OF 2 CIRCUIT
SCALE 4:1



△キック形状 ②
KINK FORM

△キック形状 ②
KINK FORM

△キック形状 ①
KINK FORM

△キック形状 ①
KINK FORM

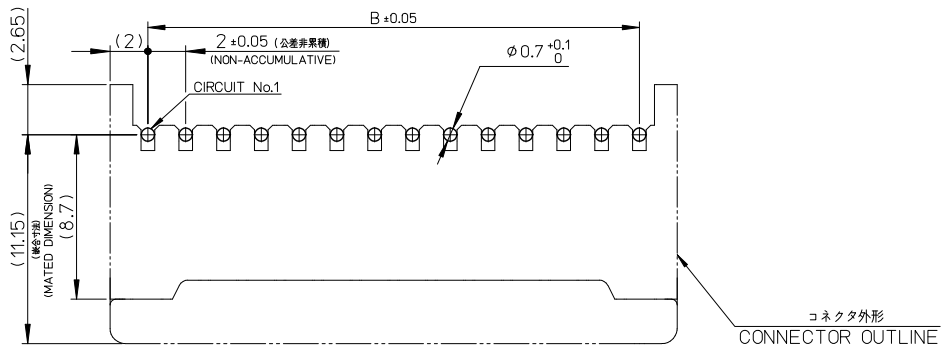
FIGURE OF 3 CIRCUIT
SCALE 4:1

NOTES:

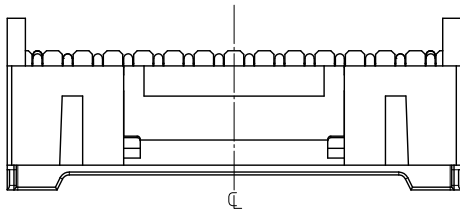
- 適合相手: 503658 シリーズ
MATE WITH: 503658 SERIES.
- 偶数極に適用。
APPLY FOR EVEN CIRCUIT.
- キックは両端2ピンに付加。
KINK ATTACHED TO THE POSITION OF 2PINS TO BOTH OUTSIDE ENDS.
- 2極以外のキック形状は両サイドが①、それ以外のキック形状は全て② 形状とする。
3極のキック形状は両サイドに①、2ピン目に② 形状を付加する。
MORE THAN 2 CIRCUIT : PINS AT BOTH ENDS ARE KINK FORMED TO ①
THE OTHER PINS ARE KINK FORMED TO ②
3 CIRCUIT : PINS AT BOTH ENDS ARE KINK FORMED TO ①
THE OTHER PINS ARE KINK FORMED TO ②
- トレードマーク: MXLにて表示。
キャビティ番号: 1桁から2桁の数字にて表示。 金型番号: アルファベット1文字にて表示。
TRADE MARK IS FORMED BY MXL.
AND BY 1 - 2 DIGIT NUMBER (TO CAVITY No.)
AND BY 1 LETTER OF ALPHABET (TO MOLD No.)
- 本製品のプラスチック部に黒点等が確認される場合や、色合いが異なる場合がございます。製品性能に影響はございません。
THERE IS NO INFLUENCE IN THE PRODUCT PERFORMANCE THROUGH THE BLACK SPOT ETC.
MIGHT BE CONFIRMED TO THE PLASTIC PART OF THIS PRODUCT AND
THE SHADE MIGHT BE DIFFERENT.
- 製品の取り扱いについては、コネクタ取扱説明書(AS-503658-001)を参照します。
PLEASE REFER TO INSTRUCTION MANUAL(AS-503658-001)
- ELV及びRoHS適合品
ELV AND RoHS COMPLIANT

REVISED EC NO. J2012-0117 DRAWN: SSAT002 CHKD: KASAKAWA APPR: NUKITA REV	GENERAL TOLERANCES (UNLESS SPECIFIED)		DIMENSION STYLE MM ONLY		SCALE 4:1	DESIGN UNITS METRIC	THIRD ANGLE PROJECTION
	10 UNDER	± 0.2	DRAWN BY SSAT002	DATE 2010/08/06	TITLE 2.0 W/B CONN. SINGLE DIP R/A PLUG HS'G ASS'Y WITHOUT BOSS		
	10 OVER 30 UNDER	± 0.25	CHECKED BY KASAKAWA	DATE 2010/08/16	MOLEX INCORPORATED		
	30 OVER	± 0.3	APPROVED BY NUKITA	DATE 2010/08/16	DOCUMENT NO. SD-503660-001		
ANGULAR ±1 °		DRAFT WHERE APPLICABLE MUST REMAIN WITHIN DIMENSIONS		MATERIAL NO. SEE SHEET 1		SHEET NO. 2 OF 3	
SIZE A3 THIS DRAWING CONTAINS INFORMATION THAT IS PROPRIETARY TO MOLEX INCORPORATED AND SHOULD NOT BE USED WITHOUT WRITTEN PERMISSION							

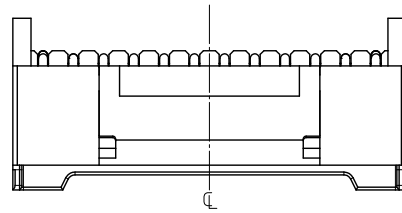
10 9 8 7 6 5 4 3 2 1



基板取付穴推奨寸法 (マウント面)
RECOMMENDED P.C. BOARD
HOLE DIMENSION
(MOUNTING SIDE)
($\pm 1.2-1.6$)



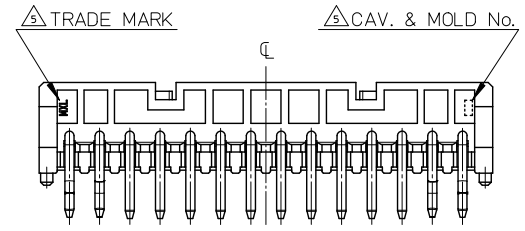
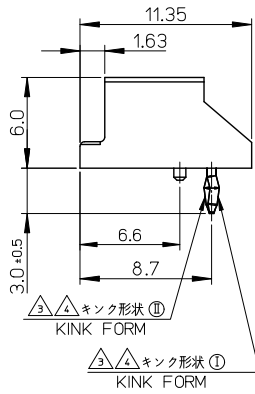
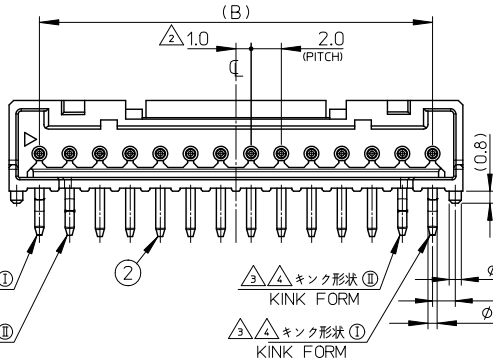
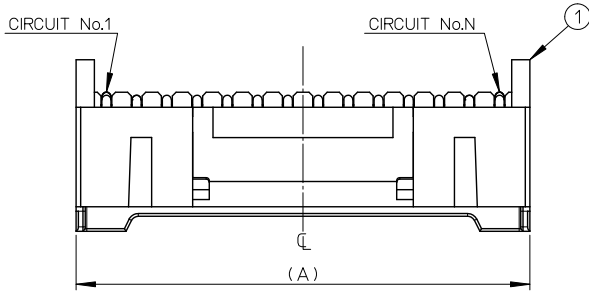
ロック面 14,15極形状
LOCK SIDE SHAPE OF 14,15CKT.



ロック面 4,5,6,8,10,12極形状
LOCK SIDE SHAPE OF 4,5,6,8,10,12CKT.

PROPOSED EC NO: J2012-0117 DRWN: SSAT002 CHKD: KASAKAWA APPR: NUKITA	GENERAL TOLERANCES (UNLESS SPECIFIED)		DIMENSION STYLE MM ONLY		SCALE 4:1	DESIGN UNITS METRIC	THIRD ANGLE PROJECTION
	10 UNDER	± 0.2	10 OVER	± 0.25	DRAWN BY SSAT002	DATE 2010/08/06	TITLE 2.0 W/B CONN. SINGLE DIP R/A PLUG HS'G ASS'Y WITHOUT BOSS
	30 UNDER	± 0.25	30 OVER	± 0.3	CHECKED BY KASAKAWA	DATE 2010/08/16	
	ANGULAR ±1 °		MATERIAL NO. SEE SHEET 1		APPROVED BY NUKITA		DATE 2010/08/16
DRAFT WHERE APPLICABLE MUST REMAIN WITHIN DIMENSIONS				DOCUMENT NO. SD-503660-001		SHEET NO. 3 OF 3	

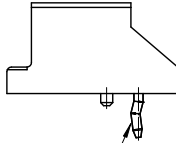
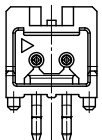
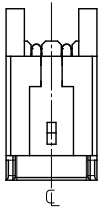
10 9 8 7 6 5 4 3 2 1



28	32	503660	-1500	15	503660-**-00 ボス有(WITH BOSS)
26	30		-1400	14	
22	26		-1200	12	
18	22		-1000	10	
14	18		-0800	8	
10	14		-0600	6	
8	12		-0500	5	
6	10	503660	-0400	4	
B	A	TORAY PACKAGE ORDER NO.		CIRCUIT	CONNECTOR SERIES No.

No.	部品 PART	材質 MATERIAL	PROPOSED	GENERAL TOLERANCES (UNLESS SPECIFIED)	DIMENSION STYLE	SCALE	DESIGN UNITS	THIRD ANGLE PROJECTION
①	ハウジング HOUSING	ポリエステル(PBT), ガラス充填, UL94V-0 POLYESTER, GLASS FILLED, UL94V-0 色: ナチュラル(白)	2011/03/23 DRW:SSA1002 CHK:KASAKAWA APP:NUKITA 2011/07/25 2011/07/29	10 UNDER ±0.2 10 OVER 30 UNDER ±0.25 30 OVER ±0.3	MM ONLY	4:1	METRIC	THIRD ANGLE PROJECTION
②	ピン PIN	黄銅, 錫めっき BRASS, Sn PLATED	EC NO. J2012-0117 2011/03/23	ANGULAR ±1 ° DRAFT WHERE APPLICABLE MUST REMAIN WITHIN DIMENSIONS	SEE CHART			

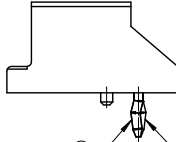
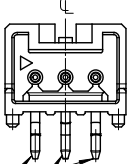
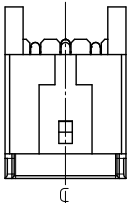
10 9 8 7 6 5 4 3 2 1



△キック形状 ②
KINK FORM

△キック形状 ②
KINK FORM

FIGURE OF 2 CIRCUIT
SCALE 4:1



△キック形状 ②
KINK FORM

△キック形状 ②
KINK FORM

△キック形状 ①
KINK FORM

△キック形状 ①
KINK FORM

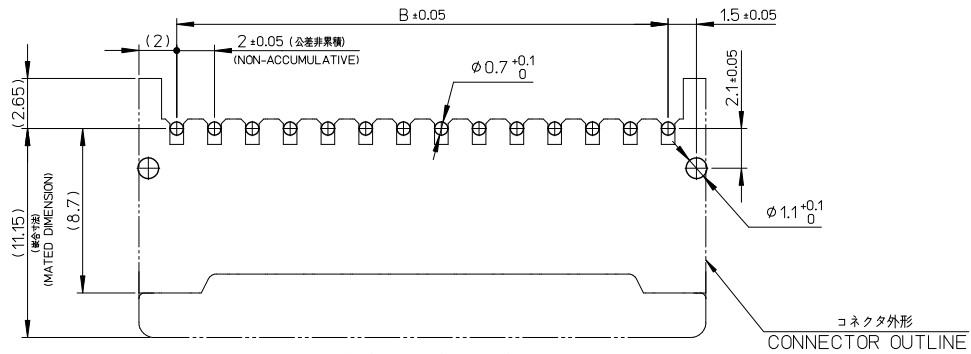
FIGURE OF 3 CIRCUIT
SCALE 4:1

NOTES:

1. 嵌合相手: 503658 シリーズ
MATE WITH: 503658 SERIES.
- △ 偶数極に適用。
APPLY FOR EVEN CIRCUIT.
- △ キックは両端2ピンに付加。
KINK ATTACHED TO THE POSITION OF 2PINS TO BOTH OUTSIDE ENDS.
- △ 2極以外のキック形状は両サイドが②、それ以外のキック形状は全て①形状とする。
3極のキック形状は両サイドに②、2ピン目に①形状を付加する。
MORE THAN 2 CIRCUIT : PINS AT BOTH ENDS ARE KINK FORMED TO ②
THE OTHER PINS ARE KINK FORMED TO ①
3 CIRCUIT : PINS AT BOTH ENDS ARE KINK FORMED TO ②
THE OTHER PINS ARE KINK FORMED TO ①
- △ トレードマーク: MXLにて表示。
キャビティ番号: 1桁から2桁の数字にて表示。 金型番号: アルファベット1文字にて表示。
TRADE MARK IS FORMED BY MXL.
AND BY 1 - 2 DIGIT NUMBER (TO CAVITY No.)
AND BY 1 LETTER OF ALPHABET (TO MOLD No.)
6. 本製品のプラスチック部に黒点等が確認される場合や、色合いが異なる場合がございますが、製品性能に影響は御座いません。
THERE IS NO INFLUENCE IN THE PRODUCT PERFORMANCE THOUGH THE BLACK SPOT ETC.
MIGHT BE CONFIRMED TO THE PLASTIC PART OF THIS PRODUCT AND
THE SHADE MIGHT BE DIFFERENT.
7. 製品の取り扱いについては、コネクタ取扱説明書(AS-503658-001)を参照願います。
PLEASE REFER TO INSTRUCTION MANUAL(AS-503658-001)
8. ELV及びRoHS適合品
ELV AND RoHS COMPLIANT

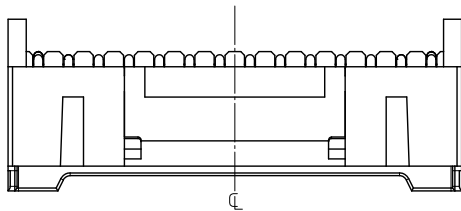
PROPOSED EC NO: J2012-0117 DRWN:SSAT002 CHKD:KASAKAWA APPR:NUKITA REV:0	GENERAL TOLERANCES (UNLESS SPECIFIED)		DIMENSION STYLE MM ONLY		SCALE 4:1	DESIGN UNITS METRIC	THIRD ANGLE PROJECTION
	10 UNDER	± 0.2	DRAWN BY SSAT002	DATE 2010/08/06	TITLE 2.0 W/B CONN. SINGLE DIP R/A PLUG HS'G ASS'Y WITH BOSS		
	10 OVER 30 UNDER	± 0.25	CHECKED BY KASAKAWA	DATE 2010/08/16			
	30 OVER	± 0.3	APPROVED BY NUKITA	DATE 2011/07/29	MOLEX INCORPORATED		
ANGULAR	±1 °	MATERIAL NO. SEE SHEET 1		DOCUMENT NO. SD-503660-002	SHEET NO. 2 OF 3		
DRAFT WHERE APPLICABLE MUST REMAIN WITHIN DIMENSIONS			THIS DRAWING CONTAINS INFORMATION THAT IS PROPRIETARY TO MOLEX INCORPORATED AND SHOULD NOT BE USED WITHOUT WRITTEN PERMISSION				

10 9 8 7 6 5 4 3 2 1

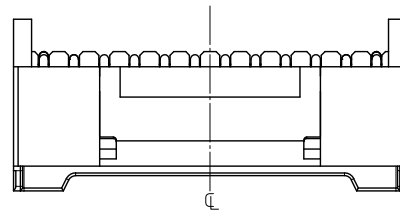


基板取付穴推奨寸法 (マウント面)
RECOMMENDED P.C. BOARD
HOLE DIMENSION
(MOUNTING SIDE)
(t=1.2~1.6)

コネクタ外形
CONNECTOR OUTLINE



ロック面 14,15極形状
LOCK SIDE SHAPE OF 14,15CKT.



ロック面 4,5,6,8,10,12極形状
LOCK SIDE SHAPE OF 4,5,6,8,10,12CKT.

PROPOSED IEC NO: J2012-0117 DRW:SSAT002 CHK:KASAKAWA APPR:NUKITA 2011/03/23 2011/07/25 2011/07/29	GENERAL TOLERANCES (UNLESS SPECIFIED)		DIMENSION STYLE MM ONLY		SCALE 4:1	DESIGN UNITS METRIC	THIRD ANGLE PROJECTION
	10 UNDER	± 0.2	DRAWN BY SSAT002	DATE 2010/08/06	TITLE 2.0 W/B CONN. SINGLE DIP R/A PLUG HS'G ASS'Y WITH BOSS MOLEX INCORPORATED		
	10 OVER 30 UNDER	± 0.25	CHECKED BY KASAKAWA	DATE 2010/08/16			
	30 OVER	± 0.3	APPROVED BY NUKITA	DATE 2011/07/29	MOLEX INCORPORATED		
	ANGULAR ±1°		MATERIAL NO.		DOCUMENT NO.	SHEET NO.	
DRAFT WHERE APPLICABLE MUST REMAIN WITHIN DIMENSIONS		SEE SHEET 1		SD-503660-002	3 OF 3		