

Excellent Integrated System Limited

Stocking Distributor

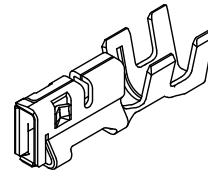
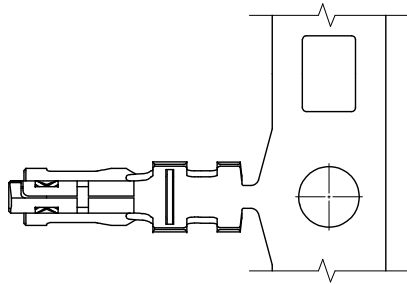
Click to view price, real time Inventory, Delivery & Lifecycle Information:

[Molex Connector Corporation](#)
[5051538000](#)

For any questions, you can email us directly:

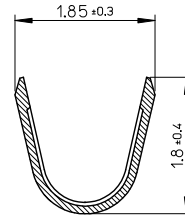
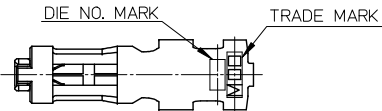
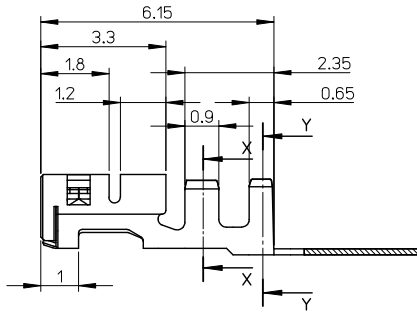
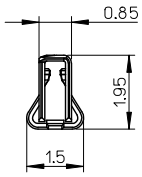
sales@integrated-circuit.com

10 9 8 7 6 5 4 3 2 1

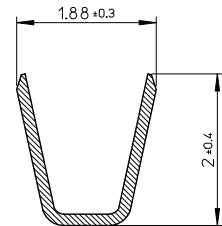


NOTES

1. 使用材料: 銅合金、錫メッキ(1=0.15)
MATERIAL: COPPER ALLOY, PRE-TINNED (1=0.15)
2. 適合ハウジング: 505151シリーズ
APPLICABLE HOUSING: 505151 SERIES
3. ELV及びRoHS適合
ELV AND ROHS COMPLIANT
4. アプリケーション仕様書(コネクタ取扱説明書): AS-505151-001/-002
APPLICATION SPECIFICATION (CONNECTOR MANUAL):
5. 製品仕様書: PS-505151-001
PRODUCT SPECIFICATION:
6. 圧着規程教材(品質要領書): ATS-57427-0000
CRIMPING VISUAL AID:



SECTION X-X
SCALE 20:1



SECTION Y-Y
SCALE 20:1

WIRE RANGE
AWG: #22, #24

INSULATION RANGE
Ø1.5 MAX.

5051538000	CHAIN
MATERIAL NO.	FORM

RELEASED IEC NO. J2015-0035 DRAWN: MIKEDA01 CHECKED: CHIKO KASAKAWA APPROVED: NUKITA DATE: 2014/06/30 DATE: 2014/07/11 DATE: 2014/07/15	GENERAL TOLERANCES (UNLESS SPECIFIED)		DIMENSION STYLE		SCALE 10:1	DESIGN UNITS METRIC	THIRD ANGLE PROJECTION	
	10 UNDER ±0.2		MM ONLY					
	10 OVER 30 UNDER ±0.25		DRAWN BY MIKEDA01		DATE 2014/03/03		TITLE 2.0MM PITCH W/B CONN. REC TERMINAL	
	30 OVER ±0.3		CHECKED BY KASAKAWA		DATE 2014/03/04			
ANGULAR ±3°		APPROVED BY NUKITA		DATE 2014/03/28		molex DOCUMENT NO. SD-505153-001 SHEET NO. 1 OF 1		
DRAFT WHERE APPLICABLE MUST REMAIN WITHIN DIMENSIONS		MATERIAL NO. SEE CHART		SIZE A3				
THIS DRAWING CONTAINS INFORMATION THAT IS PROPRIETARY TO MOLEX INCORPORATED AND SHOULD NOT BE USED WITHOUT WRITTEN PERMISSION								

9 8 7 6 5 4 3 2 1