



Distributor of On-Shore Technology, Inc.: Excellent Integrated System Limited

Datasheet of OSTYK40303130 - Connector Barrier Block Strip 3 Circuit 0.325" (8.26mm)

Contact us: sales@integrated-circuit.com Website: www.integrated-circuit.com

Excellent Integrated System Limited

Stocking Distributor

Click to view price, real time Inventory, Delivery & Lifecycle Information:

[On-Shore Technology, Inc.](#)

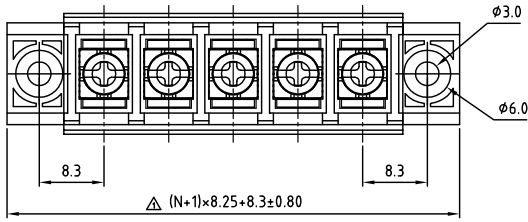
[OSTYK40303130](#)

For any questions, you can email us directly:

sales@integrated-circuit.com

SIGN	DATE	DESCRIPTION	APPROVER

THIS IS CAD DRAWING, DO NOT REVISE MANUALLY!!!



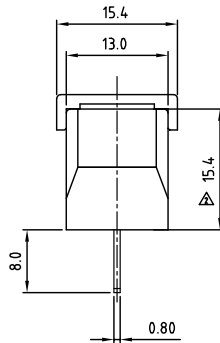
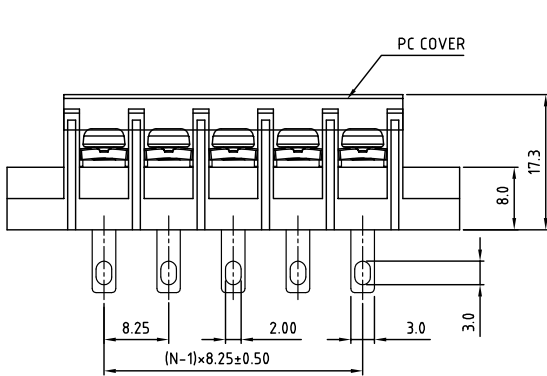
SPECIFICATIONS

VOLTAGE & CURRENT:	300 V, 20 A
WITHSTANDING VOLTAGE:	AC 2000 V/Min
INSULATION RESISTANCE:	1000 M Ω OR MORE AT DC 500 V
TEMPERATURE RANGE:	-40 °C ~ +105 °C
SCREW TORQUE VALUE:	7 Lb-In.
WIRE RANGE:	22 - 12 AWG
1) MOLDED PARTS:	THERMOPLASTIC, UL 94 V-0 BLACK
2) TERMINAL:	BRASS, 0.8t, Tin PLATED
3) TERMINAL SCREWS:	STEEL, Ni PLATED, M3
4) COVER MATERIAL:	PC
APPROVAL:	us

RoHS Compliant

PART NUMBER: OSTYK403XX130

- NO. OF POLES
- 02: 2 POLES
 - 03: 3 POLES
 - 04: 4 POLES
 - ...
 - 30: 30 POLES



N=Number of poles

THESE DRAWINGS AND SPECIFICATIONS ARE THE PROPERTY OF ON-SHORE TECHNOLOGY, INC. AND SHALL NOT BE REPRODUCED, COPIED OR USED IN ANY MANNER WITHOUT THE PRIOR WRITTEN CONSENT OF ON-SHORE TECHNOLOGY, INC.

ON-SHORE TECHNOLOGY, INC.		TITLE		OSTYK-403 With Flange&With Cover Series	
		PART NO.		OSTYK403XX130	
APPROVED		CHECKED	DESIGNED	DRAWN	CUST NO.
Shi Jun 2007.07.18		Seamus 2007.07.18	LUCY 2007.7.18	LUCY 2007.7.18	
		UNIT: mm		Tolerance	
		SCALE: NONE		X: ±0.50	
		SHEET: 01/01		X.X ±0.30	
		REV.: c		X.XX ±0.10	
				X* ±1*	