

## **Excellent Integrated System Limited**

Stocking Distributor

Click to view price, real time Inventory, Delivery & Lifecycle Information:

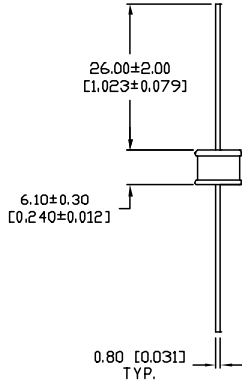
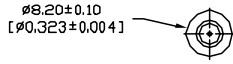
[Lumex, Inc.](#)  
[GT-BG90L](#)

For any questions, you can email us directly:

[sales@integrated-circuit.com](mailto:sales@integrated-circuit.com)

DATE	REVISIONS	REV	DRAWING NUMBER GT-BG90L	REV
------	-----------	-----	----------------------------	-----

*UNCONTROLLED DOCUMENT*



**RESPONSE TIME**

SURGE TYPE: (Rt MAX.)	
1Kv/ms:	1 X 10 <sup>-5</sup> SEC.
1Kv/us:	1 X 10 <sup>-8</sup> SEC.
5Kv/us:	1 X 10 <sup>-9</sup> SEC.

**ELECTRICAL SPECIFICATIONS**

D.C. FIRING VOLTAGE (dv/dt<100v/s):	90V ±20%
IMPULSE FIRING VOLTAGE (dv/dt=5kv/us):	MAX 1000V
PEAK IMPULSE CURRENT (8/20us PULSE):	5KA
SURGE LIFE:	100A 500 TIMES (8/20us)
INSULATION RESISTANCE:	MIN 10 <sup>4</sup> MΩ (DC 50V)
INTER-ELECTRODE CAPACITANCE:	MAX 2PF (1KHz)

**APPLICABLE ENVIRONMENTAL SPECIFICATIONS**

ALL UNITS MEET THE REQUIREMENTS OF MIL-STD 202 AS OUTLINED BELOW

TEST	METHOD	CONDITION	RATING
VIBRATION	204B	C	10-55Hz .06DA
SHOCK	213A	C	100 g
HUMIDITY	103B	B	95% Re. HUMIDITY
TEMPERATURE CYCLING	102A	C	-65°C TO +125°C
BAROMETRIC PRESSURE	105C	B	50,000 ft.
THERMAL SHOCK	107	B	-65°C TO 125°C
SOLDERABILITY	208	B	—

**RELIABILITY NOTE**

OUR MANY YEARS OF EXPERIENCE DATA ACCUMULATION INDICATE THAT SOLDER HEAT IS A MAJOR CAUSE OF EARLY AND FUTURE FAILURE. PLEASE PAY ATTENTION TO YOUR SOLDERING PROCESS.



290 E. HELLEN ROAD  
PALATINE, ILLINOIS 60067  
(847) 359-2790

**CONFIDENTIAL INFORMATION**  
THE INFORMATION CONTAINED IN THIS DOCUMENT IS THE PROPERTY OF LUMEX INCORPORATED. EXCEPT AS SPECIFICALLY AUTHORIZED IN WRITING BY LUMEX INCORPORATED, THE HOLDER OF THIS DOCUMENT SHALL KEEP ALL INFORMATION CONTAINED HEREIN CONFIDENTIAL AND SHALL PROTECT SAME IN WHOLE OR IN PART FROM DISCLOSURE AND DISSEMINATION TO ALL THIRD PARTIES.

DATE: 3-9-98	DWN:	CHK'D:	APPD:
SCALE: N/A			

AXIAL LEADED, SURGE ARRESTOR, 90 VDC.

PAGE 1 OF 1	DRAWING NUMBER GT-BG90L	REV
-------------	----------------------------	-----

*UNCONTROLLED DOCUMENT*

UNLESS OTHERWISE SPECIFIED TOLERANCE IS ±.25mm (±0.010")