

## Excellent Integrated System Limited

Stocking Distributor

Click to view price, real time Inventory, Delivery & Lifecycle Information:

[Hirose Electric Co Ltd](#)  
[HRM\(G\)-300-467B-1](#)

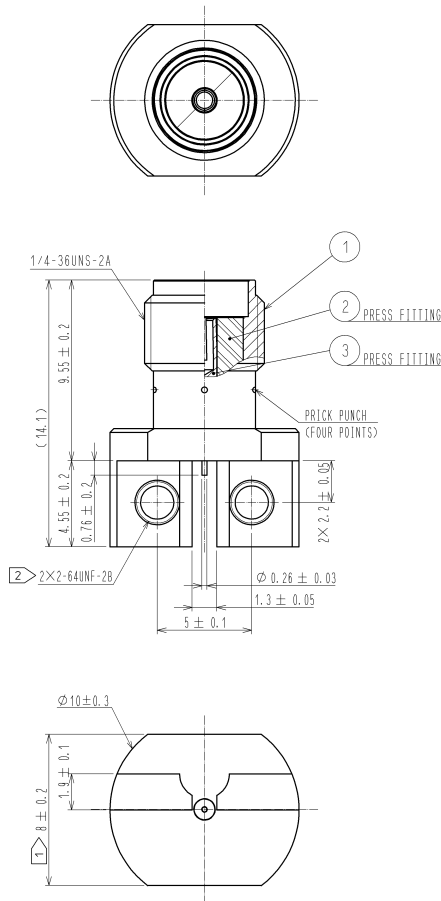
For any questions, you can email us directly:

[sales@integrated-circuit.com](mailto:sales@integrated-circuit.com)

2015/01/22 12:04:28(JST) HK. HORINO

DRAWING FOR REFERENCE: This is subject to change without notice

APPLICABLE STANDARD						
RATING	OPERATING TEMPERATURE RANGE	-55°C TO +85°C(95%RH MAX)		STORAGE TEMPERATURE RANGE	-55°C TO +85°C(95%RH MAX)	
	POWER	_____ W		CHARACTERISTIC IMPEDANCE	50 Ω ( 0 TO 28 GHz)	
	PECULIARITY	_____		APPLICABLE CABLE	_____	
SPECIFICATIONS						
ITEM	TEST METHOD			REQUIREMENTS	QT	AT
<b>CONSTRUCTION</b>						
GENERAL EXAMINATION	VISUALLY AND BY MEASURING INSTRUMENT.			ACCORDING TO DRAWING.	×	×
MARKING	CONFIRMED VISUALLY.				—	—
<b>ELECTRIC CHARACTERISTICS</b>						
CONTACT RESISTANCE	100 mA MAX (DC OR 1000 Hz).			CENTER CONTACT 4 mΩ MAX.	×	×
				OUTER CONTACT 4 mΩ MAX.	×	×
INSULATION RESISTANCE	500 V DC.			5000 MΩ MIN.	×	×
VOLTAGE PROOF	1000 V AC FOR 1 min. CURRENT LEAKAGE 2mA MAX.			NO FLASHOVER OR BREAKDOWN.	×	×
VOLTAGE STANDING WAVE RATIO	FREQUENCY 0.045 TO 28 GHz.			VSWR 1.4 MAX. (0.045 TO 20GHz)	×	—
				VSWR 1.7 MAX. (20 TO 28GHz)		
INSERTION LOSS	FREQUENCY TO GHz			dB MAX.	—	—
<b>MECHANICAL CHARACTERISTICS</b>						
CONTACT INSERTION AND EXTRACTION FORCES	EXTRACTION GAUGE: $\phi 0.9017 \begin{smallmatrix} 0 \\ -0.0025 \end{smallmatrix}$ STEEL GAUGE.			INSERTION FORCE N MAX.	—	—
				EXTRACTION FORCE 0.3 N MIN.	×	×
INSERTION AND WITHDRAWAL FORCES	MEASURED BY APPLICABLE CONNECTOR.			INSERTION FORCE N MAX.	—	—
				EXTRACTION FORCE N MIN.	—	—
MECHANICAL OPERATION	500 TIMES INSERTIONS AND EXTRACTIONS.			1) CONTACT RESISTANCE: CENTER CONTACT 6 mΩ MAX. OUTER CONTACT 6 mΩ MAX. 2) NO DAMAGE, CRACK AND LOOSENESS OF PARTS.	×	—
VIBRATION	FREQUENCY 10 TO 2000 Hz SINGLE AMPLITUDE 0.75 mm, 196 m/s <sup>2</sup> AT 10 CYCLES FOR 3 DIRECTIONS.			1) NO ELECTRICAL DISCONTINUITY OF 1 μs. 2) NO DAMAGE, CRACK AND LOOSENESS OF PARTS.	×	—
SHOCK	1960 m/s <sup>2</sup> DIRECTIONS OF PULSE 6 ms AT 3 TIMES FOR 3 DIRECTIONS.				×	—
<b>ENVIRONMENTAL CHARACTERISTICS</b>						
DAMP HEAT, CYCLIC	EXPOSED AT +25 TO +65 °C, 90~98 % TOTAL 10 CYCLES ( 240 h )			1) INSULATION RESISTANCE: 100 MΩ MIN. (AT HIGH HUMIDITY) 2) INSULATION RESISTANCE: 5000 MΩ MIN. (AT DRY) 3) NO DAMAGE, CRACK AND LOOSENESS OF PARTS.	×	—
RAPID CHANGE OF TEMPERATURE	TEMPERATURE -55 → -- → +85 → -- °C TIME 30 → 3 → 30 → 3 min. UNDER 5 CYCLES.			NO DAMAGE, CRACK AND LOOSENESS OF PARTS.	×	—
CORROSION SALT MIST	EXPOSED IN 5 % SALT WATER SPRAY FOR 48 h.			NO HEAVY CORROSION.	×	—
COUNT	DESCRIPTION OF REVISIONS			DESIGNED	CHECKED	DATE
0						
REMARK RoHS COMPLIANT THE COUPLING TIGHTENING TORQUE : 0.6 TO 0.8N·m				APPROVED	MH. YAMANE	12. 02. 08
				CHECKED	MH. TSUCHIDA	12. 02. 08
				DESIGNED	RO. YOKOYAMA	12. 02. 07
				DRAWN	RO. YOKOYAMA	12. 02. 07
Note QT:Qualification Test AT:Assurance Test X:Applicable Test				DRAWING NO.		ELC4-342452-00
	SPECIFICATION SHEET			PART NO.	HRM (G) -300-467B-1	
	HIROSE ELECTRIC CO., LTD.			CODE NO.	CL323-0937-0-00	1/1



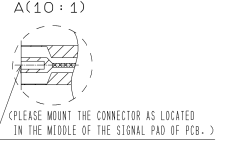
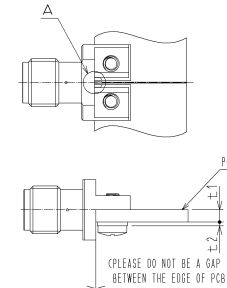
NOTES 1 WHEN THE MATING CONNECTOR, PLEASE HOLD MILLING AREA OF  $8 \pm 0.2$  WITH A WRENCH.

2-64UNF-2B SCREW TIGHTENING TORQUE IS 0.23 N · m

3 PLEASE USE A PCB MOUNTING SCREW OF THE LENGTH OF L(mm).  
THE LENGTH OF L(mm) IS PCB THICKNESS t1(mm) + SPRING WASHER THICKNESS t2(mm) + 2(mm).  
PLEASE USE A SCREW WITH SPRING WASHER.

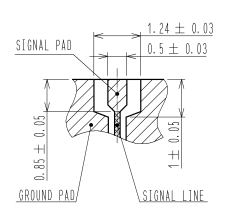
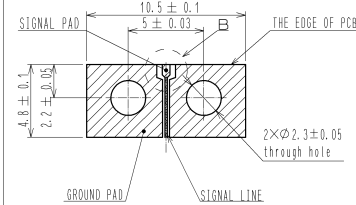
### MOUNTING OF CONNECTOR

- (1) WHEN THE CONNECTOR IS MOUNTED ON PCB, PLEASE DO NOT BE A GAP BETWEEN THE EDGE OF PCB AND CONNECTOR.
- (2) PLEASE MOUNT THE CONNECTOR AS LOCATED IN THE MIDDLE OF THE SIGNAL PAD OF PCB.
- (3) PLEASE FOLLOW THE CONDITIONS:  
SOLDERING: MANUAL SOLDERING, SOLDERING IRON: 215 °C MAX., TIME: 3S MAX., FOR 5 SECONDS MAX.






3 2-64UNF-2A SCREW OUTSIDE DRAWING

RECOMMENDED PC BOARD PATTERN DRAWING(4: 1)

 $B(10:1)$ 

PLEASE DESIGN THE SIGNAL PAD AND SIGNAL LINE WITH 50  $\Omega$ .  
 REGIST FOR SIGNAL PAD AND GROUND PAD IS PROHIBITED.

2		PIFE				ROHS COMPLIANT	
1		BRASS		GOLD PLATING		3 BERYLLIUM COPPER GOLD PLATING	
NO.		MATERIAL		FINISH . REMARKS		NO. MATERIAL FINISH . REMARKS	
UNITS 個				SCALE S : 1			
		COUNT		DESCRIPTION OF REVISIONS		DESIGNED	
		CHECKED		CHECKED		DATE	
		HIROSE ELECTRIC CO., LTD.		APPROVED . MH. YAMANE CHECKED . MH. TSUCHIDA DRAWING . RO. YOKOYAMA DRAWN . RO. YOKOYAMA		12. 02. 08. 12. 02. 08. 12. 02. 03. 12. 02. 03.	
				DRAWING NO. PART NO. CODE NO. NO.		EDC3-342452-00 HRMC6-300-467B-1 CL323-0937-0-00	
						