

Excellent Integrated System Limited

Stocking Distributor

Click to view price, real time Inventory, Delivery & Lifecycle Information:

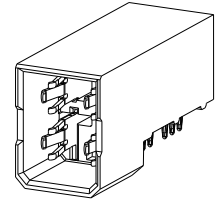
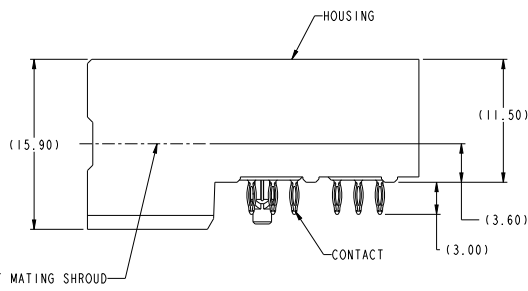
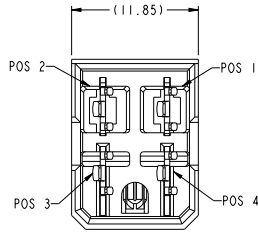
[FCI](#)

[10124648-001LF](#)

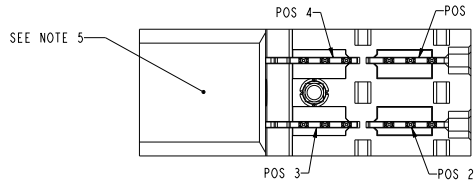
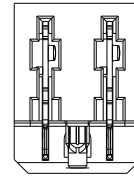
For any questions, you can email us directly:

sales@integrated-circuit.com

PRODUCT NUMBER	CONTACT PLATING NOTE
10124648-001LF	NOTE 2



SCALE 3:1



spec. ref.	GS-12-220	dr.	SPradman	designed by	20130311	projection	MM	size	A2	scale	4:1
tolerance std	ASME Y14.5	eng	Sanjeev	checked		product family	2mm High Power	acc no		rel level	Released
TOLERANCES UNLESS OTHERWISE SPECIFIED		chr		approved by		R/A HEADER ASSEMBLY, 2X2		part no	10124648	rev	C
surface	linear	0.1	±0.3	FCI		AIRMAX POWER, 11.5MM HEIGHT (PERFORMANCE BASED PLATING)		www.fci.com	cat. no.	Product - Customer Draw	sheet 1 of 2
ASME Y14.5	angular	0°	±2°	www.fci.com		Product - Customer Draw		PDS: Rev :C		STATUS: Released	

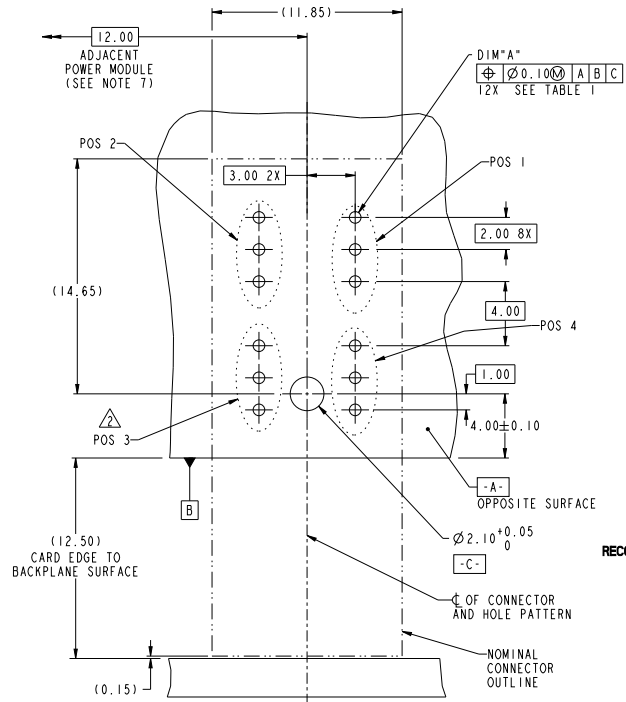
Copyright FCI

TABLE I
PLATED THROUGH-HOLE REQUIREMENTS

TOP LAYER DESCRIPTION	DRILLED HOLE DIAMETER	COPPER THICKNESS	TIN-LEAD THICKNESS	NICKEL THICKNESS	GOLD THICKNESS	TIN THICKNESS	SILVER THICKNESS	FINISHED HOLE DIAMETER (DIM"A")
TIN-LEAD	0.81-0.86 (0.85 DRILL)	0.025 - 0.050	0.005 - 0.015	--	--	--	--	0.65 - 0.80
IMMERSION TIN	0.81-0.86 (0.85 DRILL)	0.025 - 0.050	--	--	--	0.9 - 1.5um	--	0.70 - 0.80
IMMERSION SILVER	0.81-0.86 (0.85 DRILL)	0.025 - 0.050	--	--	--	--	0.15 - 0.65um	0.70 - 0.80
COPPER (SEE NOTE 11)	0.81-0.86 (0.85 DRILL)	0.025 - 0.050	--	--	--	--	--	0.70 - 0.80
GOLD	0.81-0.86 (0.85 DRILL)	0.025 - 0.050	--	0.003 - 0.007	FLASH UP TO 0.0002	--	--	0.69 - 0.80

NOTES:

1. CONNECTOR MATERIALS:
HOUSING: HIGH TEMPERATURE THERMOPLASTIC, BLACK
UL 94V-0 COMPLIANT
CONTACT: HIGH PERFORMANCE COPPER ALLOY
2. CONTACT PLATING:
PRESS-FIT TAIL: 0.5um MIN MATT TIN OVER NICKEL.
SEPARABLE INTERFACE: 0.76 um MIN GXT OVER NICKEL
3. PRODUCT SPECIFICATION: GS-12-220
4. APPLICATION SPECIFICATION: GS-20-023
5. PRODUCT MARKING (PRODUCT NUMBER & LOT CODE) ON HOUSING.
6. MINIMUM NOMINAL PCB THICKNESS: 1.6mm
7. REFER TO CUSTOMER DRAWING 10035911 REGARDING INFORMATION REGARDING PCB LAYOUT OF POWER AND GUIDE MODULES RELATIVE TO SIGNAL MODULES.
8. PRODUCT MEETS EUROPEAN UNION DIRECTIVES AND OTHER COUNTRY REGULATIONS AS DESCRIBED IN FCI SPECIFICATION GS-22-008.
9. PACKAGING MEETS FCI SPECIFICATION GS-14-920.
10. HOUSING COMPONENT WILL WITHSTAND EXPOSURE TO 260°C PEAK TEMPERATURE FOR 60 SECONDS IN A CONVECTION, INFRA-RED, OR VAPOR PHASE REFLOW OVEN.
11. COPPER PLATING THICKNESS IN CENTER OF VIA-HOLE CAN BE NO MORE THAN 0.003 LESS THAN OTHER AREAS.
12. A Δ SYMBOL WILL BE NEXT TO ANY DIMENSION, VIEW, OR NOTE WHICH HAS BEEN MODIFIED WITH THE CURRENT DRAWING REVISION



spec.ref	GS-12-220	dr	shubman	designed	projection	MM	size	A2	scale	1:1
tolerance	ASME Y14.5	ASME Y14.5	tolerances UNLESS OTHERWISE SPECIFIED	linear	0.1	±0.3	0.2X	±0.10	0.2X	±0.050
surface	linear	angular	0°	±2°	www.fcicom	cat. no.	R/A HEADER ASSEMBLY, 2X2	10124648	rel.level	Released
PDS: Rev: C STATUS: Released Printed: Sep 20, 2013										

Copyright FCI