

## Excellent Integrated System Limited

Stocking Distributor

Click to view price, real time Inventory, Delivery & Lifecycle Information:

[FCI](#)  
[51439-001](#)

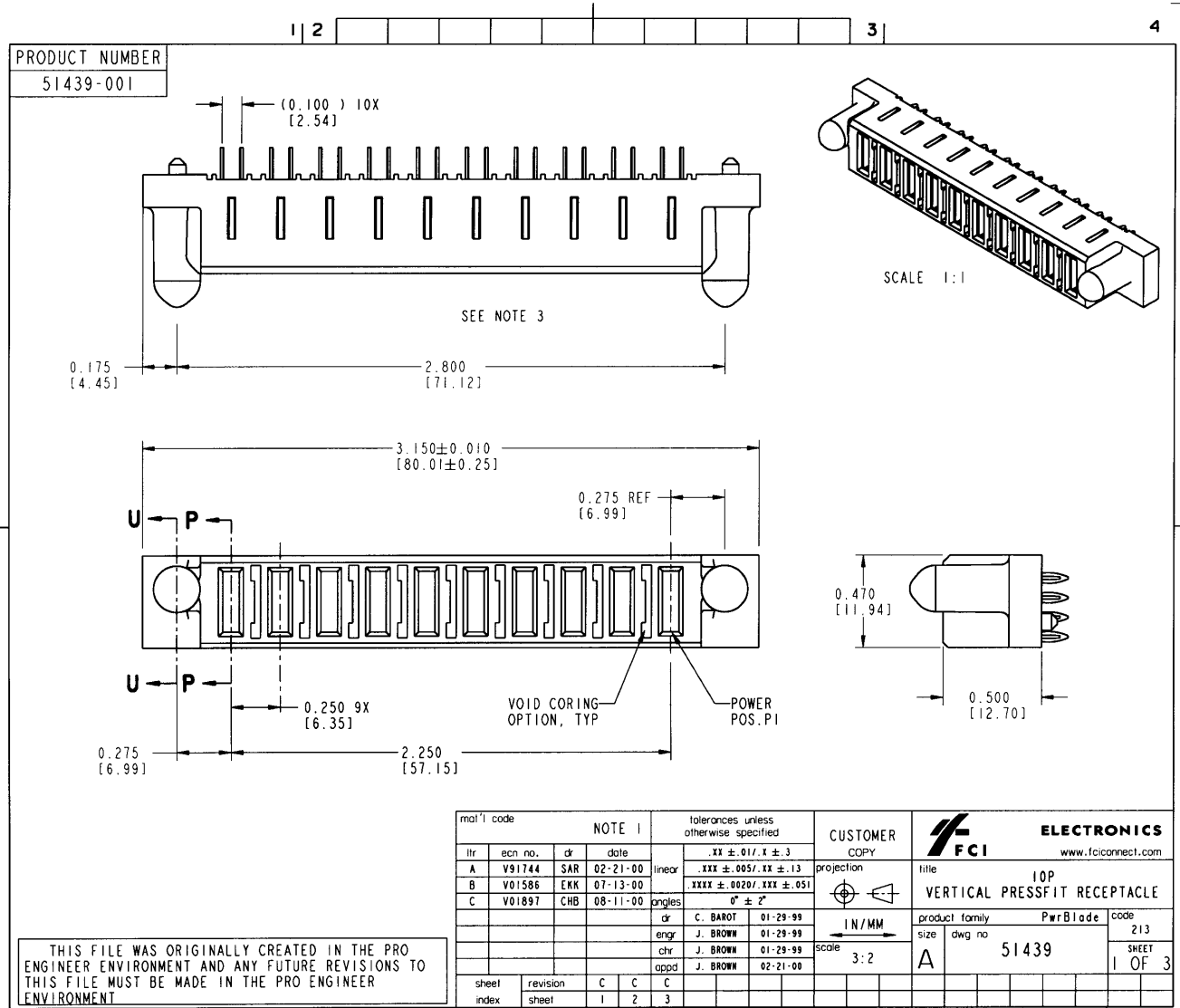
For any questions, you can email us directly:

[sales@integrated-circuit.com](mailto:sales@integrated-circuit.com)

Tous droits strictement réservés. Reproduction ou communication à des tiers  
 sans autorisation écrite de la Commission canadienne de Patentes et de  
 Propriété de FCI. Droits de reproduction FCI.



All rights strictly reserved. Reproduction or issue to third parties in any  
 form or by any means without written authority from the proprietor.  
 Property of FCI. Copyright FCI.



THIS FILE WAS ORIGINALLY CREATED IN THE PRO  
 ENGINEER ENVIRONMENT AND ANY FUTURE REVISIONS TO  
 THIS FILE MUST BE MADE IN THE PRO ENGINEER  
 ENVIRONMENT

mat'l code		NOTE 1		tolerances unless otherwise specified		CUSTOMER COPY		<b>ELECTRONICS</b> <a href="http://www.fciconnect.com">www.fciconnect.com</a>	
ltr	ecn no.	dr	date	linear	.XX ± .01 / .X ± .3	projection		title	IOP
A	V91744	SAR	02-21-00	angles	.XXX ± .005 / .XX ± .13			VERTICAL PRESSFIT RECEPTACLE	
B	V01586	EKK	07-13-00	dr	.XXX ± .0020 / .XX ± .051	IN/MM		product family	PwrBlade
C	V01897	CHB	08-11-00	eng	0° ± 2°	3:2		size	51439
				chr	C. BAROT 01-29-99			code	213
				appd	J. BROWN 01-29-99			SHEET	1 OF 3
					J. BROWN 01-29-99				
					J. BROWN 02-21-00				
sheet index	revision sheet	C	C	C				cage code	22526
		1	2	3					

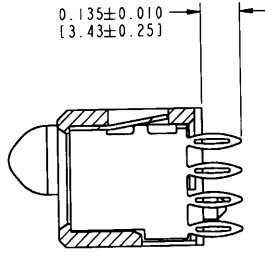
form no. 7530-001-103

Tous droits strictement réservés. Reproduction ou communication à des tiers  
 en quelque forme que ce soit sans autorisation écrite du propriétaire.  
 Property of FCI. Droits de reproduction FCI.

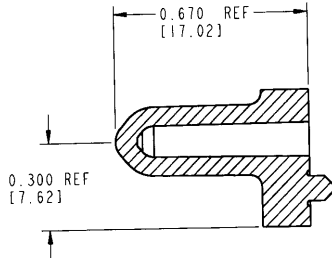


All rights strictly reserved. Reproduction or issue to third parties in any  
 form whatever is not permitted without written authority from the proprietor.  
 Property of FCI. Copyright FCI.

PRODUCT NUMBER  
51439-001



SECTION P-P



SECTION U-U

CONNECTOR NOTES:

- ① HOUSING MATERIAL: GLASS FILLED HIGH TEMP THERMOPLASTIC, FLAME RETARDANT PER UL94V-0  
POWER CONTACT MATERIAL: COPPER ALLOY
2. PLATING OPTIONS:  
POWER CONTACTS: 50u"/1.27u Ni UNDER ALL; WITH 30u"/.76u Au ON CONTACT AREA, AND SnPb ON PCB INTERFACE.
- ③ MANUFACTURER NAME, P/N, AND DATE CODE TO APPEAR ON THIS SURFACE.

PCB NOTES:

4. ALL DIMENSIONS ARE BASIC UNLESS OTHERWISE SPECIFIED
5. ALL THROUGH HOLES ARE LOCATED WITH A TRUE POSITION OF 0.004"
6. ALL DIAMETERS ARE FINISHED HOLE SIZES
7.  $\varnothing 0.0453/1.151$  DRILLED HOLES, PLATED WITH 0.0003/0.007 MIN. SnPb OVER 0.001/1.03 TO 0.003/0.08 Cu PLATING TO ACHIEVE A  $\varnothing 0.040 \pm 0.003/1.02 \pm 0.07$  HOLE.

mat'l code		tolerances unless otherwise specified		CUSTOMER COPY		<b>ELECTRONICS</b> <a href="http://www.fciconnect.com">www.fciconnect.com</a>	
lfr	ecp no.	cr	date	linear	projection	title	code
C				.XX ± .01 / .X ± .3 .XXX ± .005 / .XX ± .13 .XXXX ± .0020 / .XXX ± .051		10P VERTICAL PRESSFIT RECEPTACLE	213
				angles or engr chr appd	scale	product family size dwg no	SHEET
				C. BAROT 01-29-99 J. BROWN 01-29-99 J. BROWN 01-29-99 J. BROWN 02-21-00	2:1	PwrBlade 51439	2
sheet index	revision sheet					IN/MM A	2
						cage code	22526

form no. 7530-001-103

PDM: Rev:C

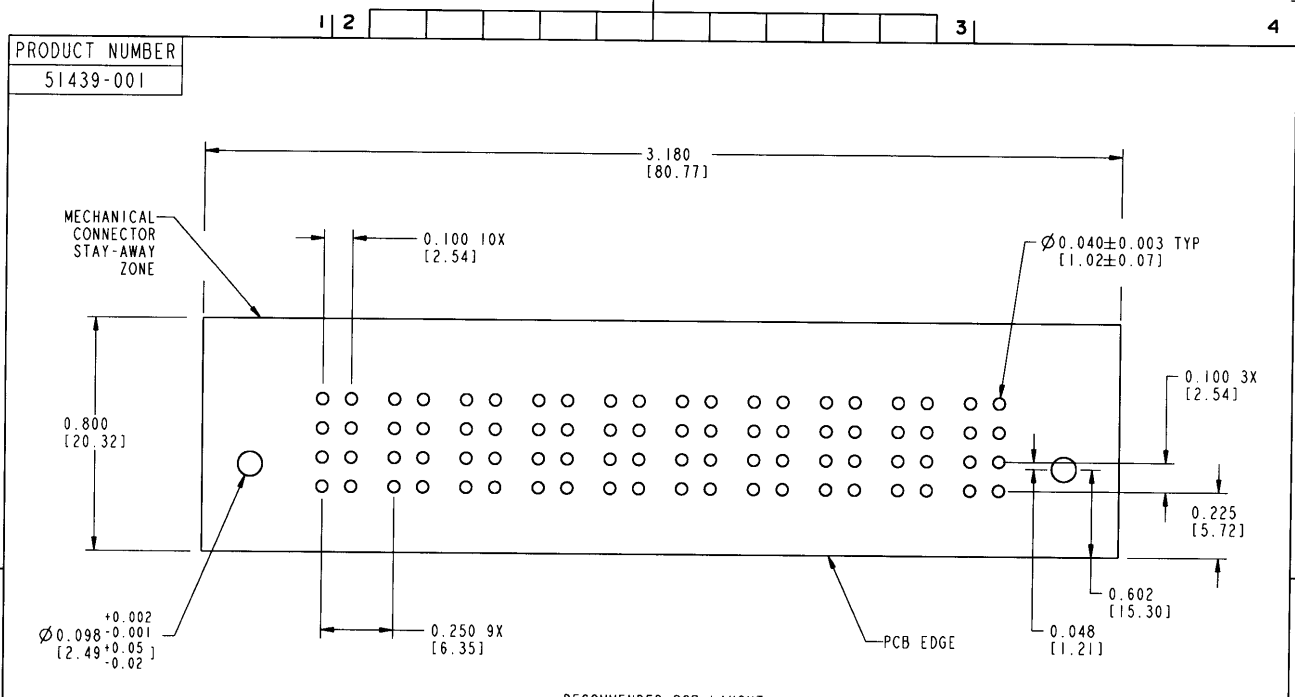
STATUS: Released

Printed: Dec 20, 2010

Tous droits strictement réservés. Reproduction ou communication à des tiers  
 interdite sous quelque forme que ce soit sans autorisation écrite du propriétaire.  
 Property of FCI. Copyright FCI. Droits de reproduction FCI.



All rights strictly reserved. Reproduction or issue to third parties in any  
 form whatever is not permitted without written authority from the proprietor.  
 Property of FCI. Copyright FCI.



RECOMMENDED PCB LAYOUT

mal'1 code				tolerances unless otherwise specified		CUSTOMER	<b>ELECTRONICS</b> www.fciconnect.com
lfr	ecn no.	dr	date	linear	.XX ± .01/.X ± .3	COPY	
C				projection	.XXX ± .005/.XX ± .13		10P
				angles	.XXX ± .0020/.XXX ± .051		VERTICAL PRESSFIT RECEPTACLE
				dr	0° ± 2°		product family
				engr	C. BAROT 01-29-99	IN/MM	PwrBlade
				chr	J. BROWN 01-29-99	scale	code
				appd	J. BROWN 02-21-00	2:1	213
sheet index	revision						size
	sheet						dwg no
							51439
							SHEET
							3

form no. 7530-001-103