

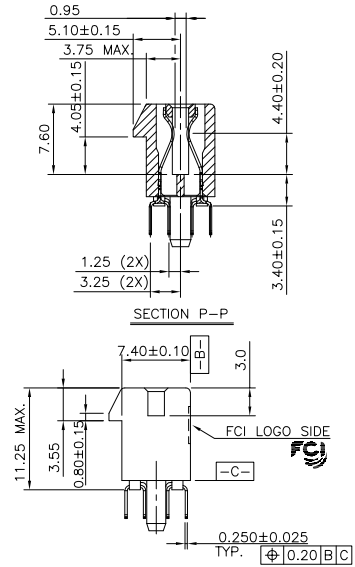
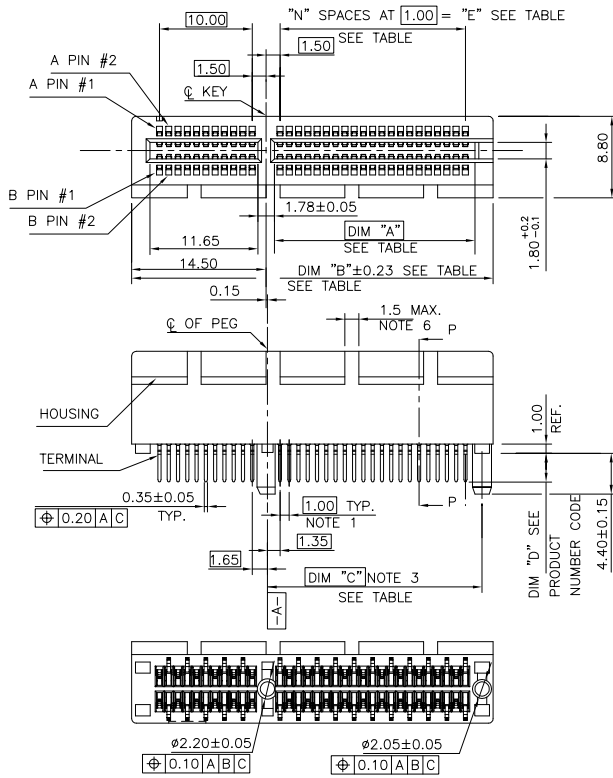
Excellent Integrated System Limited

Stocking Distributor

Click to view price, real time Inventory, Delivery & Lifecycle Information:

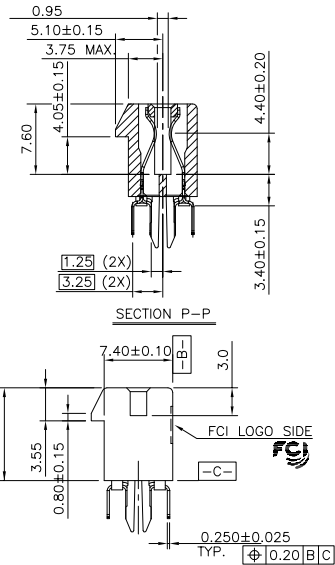
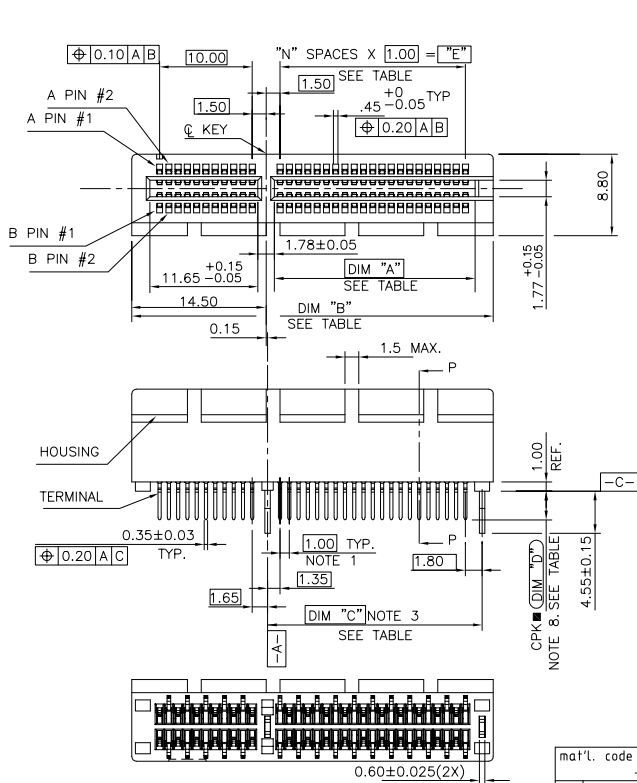
[FCI](#)
[10124782-00002TLF](#)

For any questions, you can email us directly:
sales@integrated-circuit.com

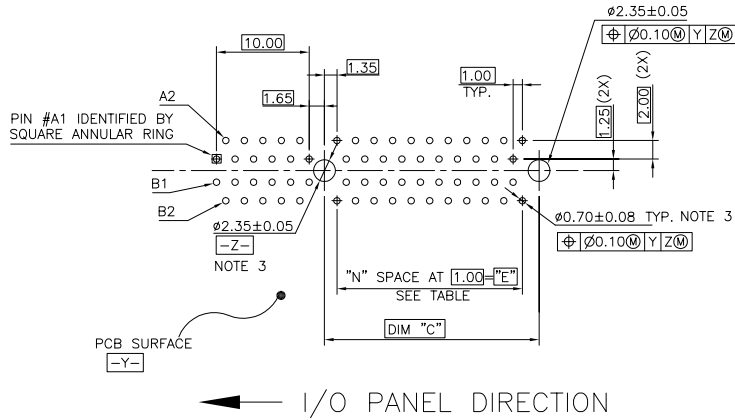


TWIN PLASTIC PEG TYPE

mat'l. code		surface	tolerance	projection	product family
-		-	ASME_Y14.5	⊕	PCI_EXPRESS
lfr	ecn no	dr	date	title	
C	ELX-06-22909	LZH	2016-03-04	PCI_EXPRESS_CARD_EDGE_GEN3	
				MM	ONE_OPEN_END_STB_ASS'Y
				scale	N/A
				dwg no 10124782	
				sheet 1 of 5	
				size A4	
				type CUSTOMER Drawing	
sheet index	revision sheet	c	s		

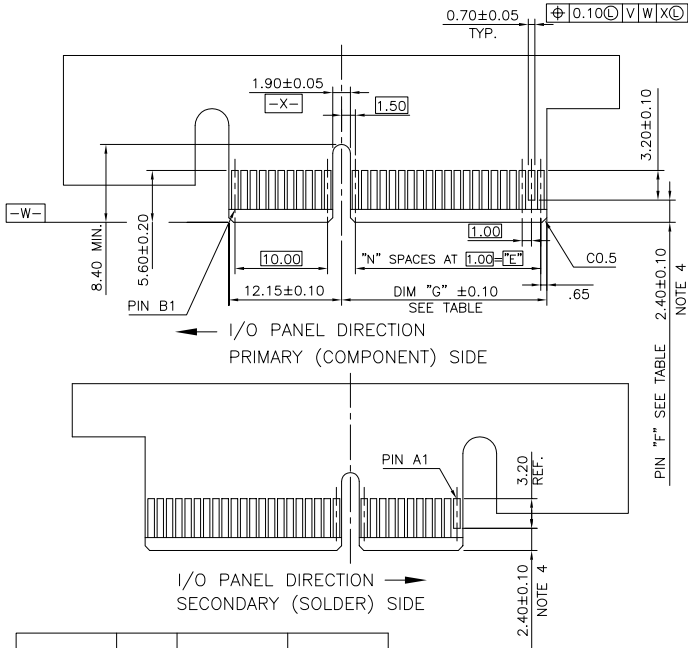


mat'l. code	surface	tolerance	projection	product family
-	-	ASME_Y14.5	ϕ	PCI_EXPRESS
lfr	ecn no	dr	date	title
				PCI_EXPRESS_CARD_EDGE_GEN3
				ONE_OPEN_END_STB_ASS'Y
				dwg no
				10124782
				sheet 2 of 5
				size
				A4
sheet	revision	c		type
index	sheet	s		CUSTOMER Drawing

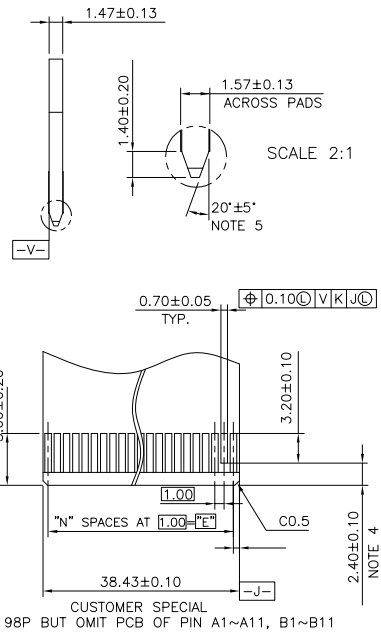


RECOMMENDED FOOTPRINT

mat'l. code		-		surface	✓	tolerance	ASME_Y14.5	projection	product family	PCI_EXPRESS
lfr	ecn no	dr	date	tolerances unless otherwise specified			angles	MM	title	
						±0.20	±2°	scale N/A	PCI_EXPRESS_CARD_EDGE_GEN3	
				dr	ZHENHUA_LIU	2016-03-04			ONE_OPEN_END_STB_ASS'Y	
				engr	ZHENHUA_LIU	2016-03-04			sheet 3 of 5 size	
				chr	STONE_LI	2016-03-04			A4	
				appd	FM_ZHENG	2016-03-04			type	
sheet index	revision sheet	c	s						CUSTOMER Drawing	



PDS. REF.	N	DIM 'G'	'F'
36	6	8.15	B17
64	20	22.15	B31
98	37	39.15	B48
164	70	72.15	B81



ADD-IN CARD EDGE-FINGER DIMENSIONS

mat'l. code			surface	tolerance	projection	product family
-			-	ASME Y14.5	⊕	PCI_EXPRESS
lfr	ecn no	dr	date	tolerances unless otherwise specified	MM	title
				angles	←	PCI_EXPRESS_CARD_EDGE_GEN3
				±2°	scale N/A	ONE_OPEN_END_STB_ASS'Y
				dr		dwg no
				engr		sheet 4 of 5
				chr		size
				appd		A4
sheet	revision	c				type
index	sheet	s				CUSTOMER Drawing

NOTES:

1. MATERIAL:

HOUSING: HIGH TEMPERATURE NYLON, GLASS FILLED UL94V-0 RATED.
TERMINAL: COPPER ALLOY.
PLATING: 50u" NICKEL UNDERPLATE ALL OVER
CONTACT AREA PLATING - SEE PRODUCT NUMBER CODE
SOLDER TAIL: TIN OR TIN /LEAD(90/10) - SEE PRODUCT
NUMBER CODE 100u" MIN. OVER 50u" NICKEL.

METAL BOARD LOCKS: COPPER ALLOY.
FINISH: 100u" TIN OR TIN/LEAD(90/10) OVER 50u" NICKEL
UNDERPLATE SEE PRODUCT NUMBER CODE.

2. PRODUCT SPECIFICATION: GS-12-233 OR GS-12-858.

③ THE HORIZONTAL AXIS FOR THE HOLE PATTERN IS ESTABLISHED BY
A LINE THROUGH THE CENTER OF THE TWO Ø2.35 HOLES.
THE VERTICAL AXIS IS 90° TO THE HORIZONTAL AXIS, THROUGH THE CENTER
OF DATUM Z.

④ NO TIE BAR PERMITTED FROM CARD EDGE TO LEADING EDGE OF PAD FOR PINS A1 AND PIN NUMBERS "F".

⑤ CHAMFER EDGES MUST BE FREE OF CUTTING BURRS.

⑥ FREQUENCY & LOCATION AT SUPPLIER DISCRETION. RIDGE MAY BE CONTINUOUS WITH NO BREAKS.

7. RoHS COMPATIBLE PRODUCT SPECIFICATIONS:

a - PLATING:

- "LF" MEANS THE PRODUCT IS LEAD-FREE, 2um MINIMUM MATTE TIN OVER 1.27um
MINIMUM NICKEL UNDERPLATE.

b - MANUFACTURING PROCESS COMPATIBILITY:

- THE HOUSING WILL WITHSTAND EXPOSURE TO 260°C±5°C TEMPERATURE FOR
10 SECONDS IN RE-FLOW APPLICATION, REFER TO GS-14-858 FOR OPERATING.

PRODUCT NUMBER CODE

10124782 -X X X X X X □ □

HOUSING COLOR OPTIONS

0-NATURAL

1-BLACK

PEGS OPTIONS

0-PLASTIC PEGS

1-METAL BOARD LOCKS

TERMINAL PLATING OPTIONS

0-50u" Ni UNDERPLATE

30u" Au CONTACT AREA

100u" TIN TAIL AREA

1-50u" Ni UNDERPLATE

15u" Au CONTACT AREA

100u" TIN TAIL AREA

2-50u" Ni UNDERPLATE

GOLD FLASH CONTACT AREA

100u" TIN TAIL AREA

3-50u" Ni UNDERPLATE

30u" Au CONTACT AREA

100u" TIN/LEAD TAIL AREA

4-50u" Ni UNDERPLATE

15u" Au CONTACT AREA

100u" TIN/LEAD TAIL AREA

5-50u" Ni UNDERPLATE

GOLD FLASH CONTACT AREA

100u" TIN/LEAD TAIL AREA

LEAD FREE OPTION

LEAVE BLANK FOR TERMINAL PLATING 3,4,5

"LF" FOR TERMINAL PLATING OPTION 0,1,2

PACKAGING OPTIONS

T-SOFT TRAY PACKAGING

M-SOFT TRAY PACKAGING & MYLAR TAPE. SEE FIGURE 1

POS OPTIONS

0-36

1-64

2-96

3-164

TAIL LENGTH OPTIONS

	DIM "D"	PCB THICKNESS	BOARD LOCKS DIM "G"
0	2.30 $^{+0.25}_{-0.13}$	1.56±0.10	1.70±0.15
1	3.10 $^{+0.25}_{-0.13}$	2.36±0.10	2.50±0.15
2	2.54±0.25	1.56±0.10	1.70±0.15
3	1.90±0.25	1.56±0.10	1.70±0.15

CONNECTOR	# POS REF.	N	DIM "A"	DIM "B"	DIM "C"	"E"
1 PORT	36	6	7.65	25.00	9.15	6.00
4 PORT	64	20	21.65	39.00	23.15	20.00
8 PORT	98	37	38.65	56.00	40.15	37.00
16 PORT	164	70	71.65	89.00	73.15	70.00

HOUSING COLOR OPTIONS

0-NATURAL

1-BLACK

PEGS OPTIONS

0-PLASTIC PEGS

1-METAL BOARD LOCKS

TERMINAL PLATING OPTIONS

0-50u" Ni UNDERPLATE

30u" Au CONTACT AREA

100u" TIN TAIL AREA

1-50u" Ni UNDERPLATE

15u" Au CONTACT AREA

100u" TIN TAIL AREA

2-50u" Ni UNDERPLATE

GOLD FLASH CONTACT AREA

100u" TIN TAIL AREA

3-50u" Ni UNDERPLATE

30u" Au CONTACT AREA

100u" TIN/LEAD TAIL AREA

4-50u" Ni UNDERPLATE

15u" Au CONTACT AREA

100u" TIN/LEAD TAIL AREA

5-50u" Ni UNDERPLATE

GOLD FLASH CONTACT AREA

100u" TIN/LEAD TAIL AREA

mat'l. code		surface		tolerance	projection	product family	
-		-		ASME_Y14.5		PCI_EXPRESS	
lfr	ecn no	dr	date	tolerances unless otherwise specified		title	
				angles		PCI_EXPRESS_CARD_EDGE_GEN3	
				±2°	MM	ONE_OPEN_END_STB_ASS'Y	
				dr	scale N/A	dwg no	
				engr		sheet 5 of 5	
				chr		size	
				appd		A4	
sheet index	revision sheet	c	s			type	
						CUSTOMER Drawing	