

Excellent Integrated System Limited

Stocking Distributor

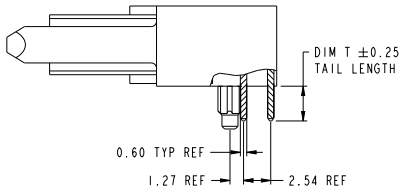
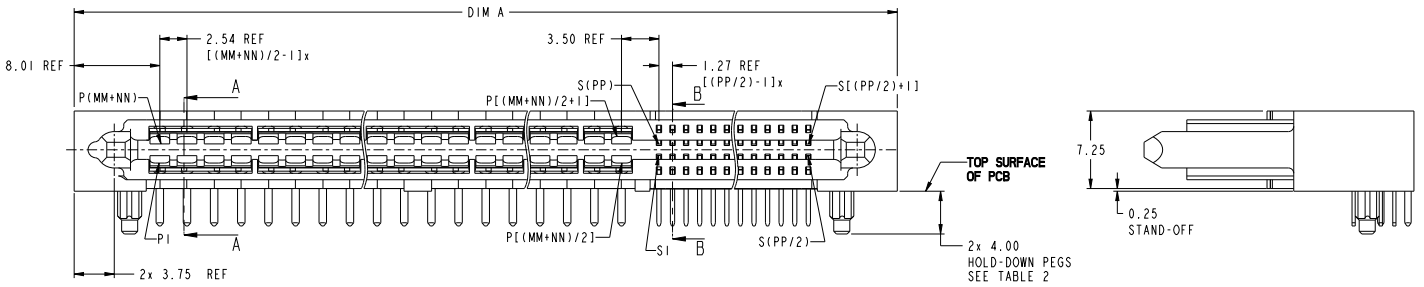
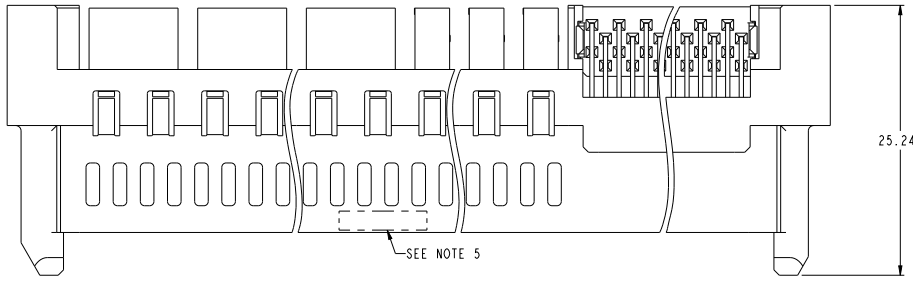
Click to view price, real time Inventory, Delivery & Lifecycle Information:

[FCI](#)

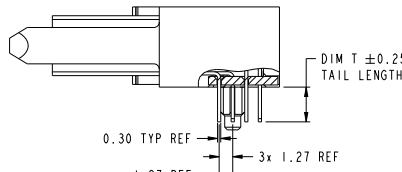
[10125112-080012CLF](#)

For any questions, you can email us directly:

sales@integrated-circuit.com



SECTION A-A
SCALE 4:1



SECTION B-B
SCALE 4:1

spec. ref.	-	dr.	John Wang	designed	projection	MM	size	A2	scale	4:1
tolerance	ISO 1101	eng.	John Wang	checked	product family		acc. no.		rel. level	Released
ISO 406	TOLERANCES UNLESS OTHERWISE SPECIFIED	chr.	John Wang	approved						
ISO 1101		appr.	John Wang	approved						
surface	linear	0.1	±0.5		HPCE BTB R/A RECPT CONFIG. P+S - UNIVERSAL DRAWING	www.fci.com	cat. no.	Product - Customer Draw	sheet 1 of 3	rev B
	angular	0.2X	±0.25							
		0.2X	±0.10							
ISO 1302		0°	±2°							

PDS: Rev: B

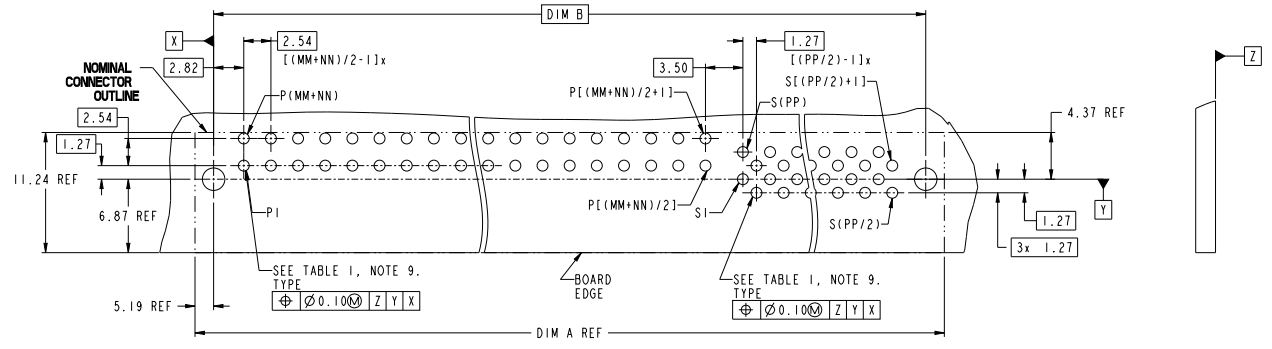
STATUS: Released

Printed: 18 May 05, 2014

Copyright FCI.

TABLE I (HPCE / SOLDER TAILS)
PLATED THROUGH-HOLE REQUIREMENTS

CONTACT TYPE	TOP LAYER DESCRIPTION	PLATED THROUGH-HOLE REQUIREMENTS					FINISHED HOLE DIAMETER
		DRILLED HOLE DIAMETER	COPPER THICKNESS	TIN-LEAD THICKNESS	TIN THICKNESS		
POWER & SIGNAL	TIN-LEAD	1.10-1.16 (1.15 DRILL)	0.025 - 0.050	0.005 - 0.015	--	0.94 - 1.10	
	IMMERSION TIN	1.10-1.16 (1.15 DRILL)	0.025 - 0.050	--	0.9 - 1.5um	0.94 - 1.10	
	COPPER (SEE NOTE 8)	1.10-1.16 (1.15 DRILL)	0.025 - 0.050	--	--	0.94 - 1.10	



RECOMMENDED PCB LAYOUT

Copyright FCI

dr: John Wang	designed	projection	MM	size	A2	scale	4:1
eng: John Wang	checked			acc no			
appr: Ho-Wing Chung	approved	product family		rel level	Released		
		HPCE BTB R/A RECPT CONFIG. P+S - UNIVERSAL DRAWING		no 10125112	rev B		
www.fci.com		cat. no.		Product - Customer Draw		sheet 2 of 3	

PDS: Rev :B

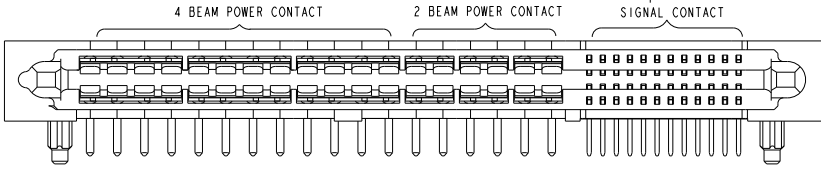
STATUS: Released

Printed: 18 May 05, 2014

10125112 - MM NN PP - LF

LEAD FREE

	A	B	C	D
TAIL LENGTH(DIM D)	2.60	3.25		
HOLD-DOWN PEGS OPTION	Y	N	Y	N



Example: The configuration above is 10125112-24I224CLF
STD HPCE BTB R/A REC 36P24S with Polarization Key and Hold-Down Pegs.
24P is 4 beam contact, 12P is 2 beam contact.

TABLE 3: PART NUMBER CODE. HPCE BTB R/A RECPT P+S CONFIG

NOTES:

- CONNECTOR MATERIALS:
HOUSING: HIGH TEMPERATURE THERMAL PLASTIC, BLACK
UL 94V-0 COMPLIANT
CONTACTS: HIGH PERFORMANCE COPPER ALLOY.
- CONTACT FINISH REF. GS-12-1125.
- PRODUCT SPECIFICATION: GS-12-1125.
- APPLICATION SPECIFICATION: GS-20-0388.
- PRODUCT MARKING (FCI - PART NUMBER & DATE CODE) ON HOUSING IN AREA SHOWN.
- PACKAGING MEETS FCI SPECIFICATION GS-14-2272.
- HOUSING COMPONENT WILL WITHSTAND EXPOSURE TO 260°C PEAK TEMPERATURE FOR 60 SECONDS IN A CONVECTION, INFRA-RED, OR VAPOR PHASE REFLOW OVEN.
- COPPER PLATING THICKNESS IN CENTER OF VIA-HOLE CAN BE NO MORE THAN 0.003 LESS THAN OTHER AREAS.
- ALL HOLE SIZES ARE FINISHED HOLE SIZES.
- MOUNTING HOLES ARE UNPLATED
Ø 2.18 +/- 0.03 FOR SOLDER TAILS
- MAXIMUM OVERALL LENGTH IS 100mm.

DIM	TABLE 2. LENGTH FORMULAS
DIM A (1)	$(MM + NN) / 2 \times 2.54 + (PP / 2) \times 1.27 + 16.02$
DIM B	DIM A - 10.38
DIM T	2.60 OR 3.25

dr: John Wang	designed: johnwang	projection:	MM	size: A2	scale: 2:1
eng: John Wang	checked: johnwang	product family: HPCE BTB R/A RECPT	rel level: Released	part no: 10125112	rev: B
chr: John Wang	approved: johnwang	www.fci.com			
oppr: John Wang	approved: johnwang	Product - Customer Draw sheet 3 of 3			

PDS: Rev: B

STATUS: Released

Printed: 18 May 05, 2014

Copyright FCI