

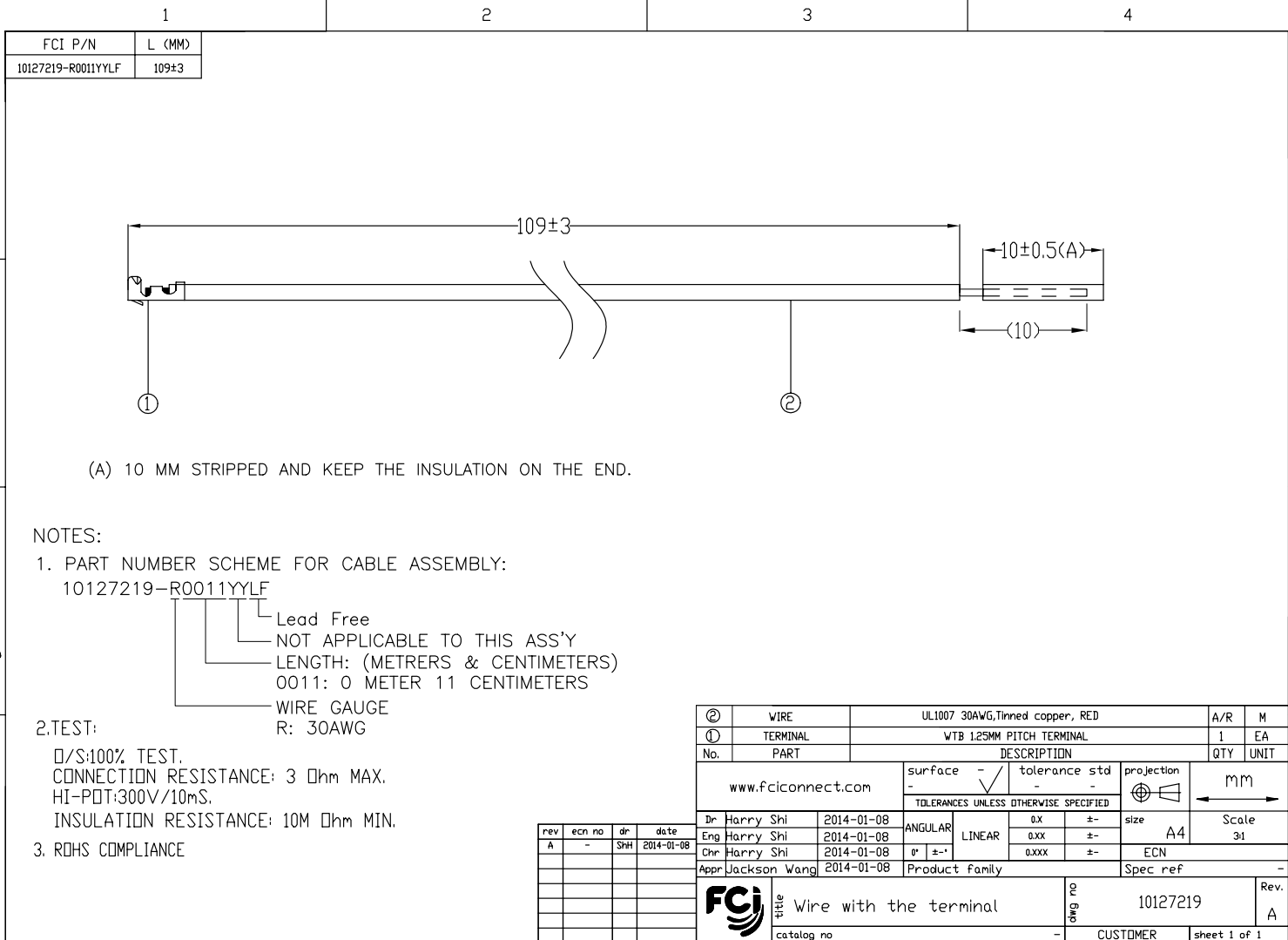
Excellent Integrated System Limited

Stocking Distributor

Click to view price, real time Inventory, Delivery & Lifecycle Information:

[FCI](#)
[10127219-R0011YYLF](#)

For any questions, you can email us directly:
sales@integrated-circuit.com



(A) 10 MM STRIPPED AND KEEP THE INSULATION ON THE END.

NOTES:

1. PART NUMBER SCHEME FOR CABLE ASSEMBLY:

10127219-R0011YYLF

- Lead Free
- NOT APPLICABLE TO THIS ASS'Y
- LENGTH: (METERS & CENTIMETERS)
- 0011: 0 METER 11 CENTIMETERS
- WIRE GAUGE
- R: 30AWG

2. TEST:

- /S: 100% TEST.
- CONNECTION RESISTANCE: 3 Ω MAX.
- HI-POT: 300V/10mS.
- INSULATION RESISTANCE: 10M Ω MIN.

3. ROHS COMPLIANCE

| | | | | |
|--------------------|--------------|--|----------------|--------------|
| ② | WIRE | UL1007 30AWG, Tinned copper, RED | A/R | M |
| ① | TERMINAL | WTB 1.25MM PITCH TERMINAL | 1 | EA |
| No. | PART | DESCRIPTION | QTY | UNIT |
| www.fciconnect.com | | surface - / tolerance std - / projection | mm | |
| | | TOLERANCES UNLESS OTHERWISE SPECIFIED | | |
| Dr | Harry Shi | 2014-01-08 | ANGULAR | 0.X ±- |
| Eng | Harry Shi | 2014-01-08 | LINEAR | 0.XX ±- |
| Chr | Harry Shi | 2014-01-08 | 0° ±- | 0.XXX ±- |
| Appr | Jackson Wang | 2014-01-08 | Product family | Spec ref |
| FCI | | title Wire with the terminal | 10127219 | Rev. A |
| catalog no | | - | CUSTOMER | sheet 1 of 1 |

| rev | ecn no | dr | date |
|-----|--------|-----|------------|
| A | - | Shi | 2014-01-08 |
| | | | |
| | | | |
| | | | |
| | | | |

Copyright FCI