

Excellent Integrated System Limited

Stocking Distributor

Click to view price, real time Inventory, Delivery & Lifecycle Information:

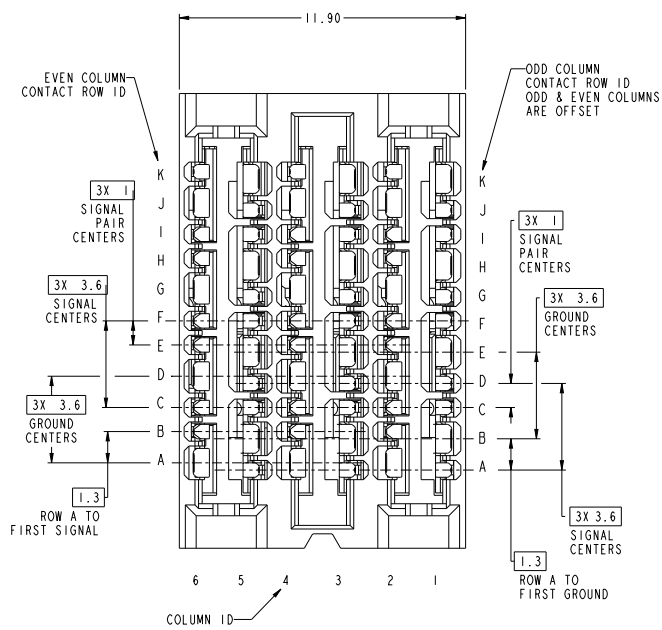
[FCI](#)

[10128347-101LF](#)

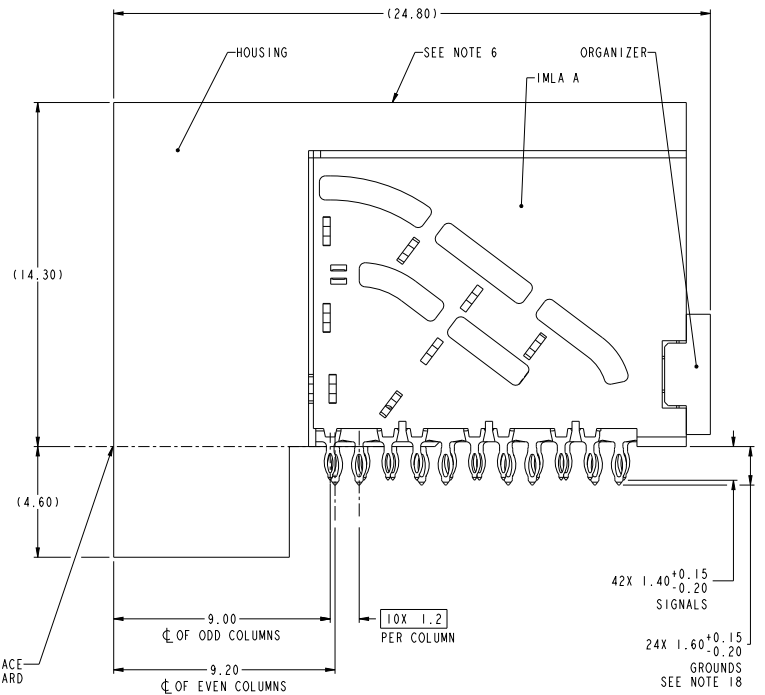
For any questions, you can email us directly:

sales@integrated-circuit.com

PRODUCT NUMBER
SEE TABLE



**10128347-101LF
STANDARD MATE RECEPTACLE**



spec. ref.	SEE NOTES	dr.	projection	MM	size	scale
tolerance std	TOLERANCES UNLESS OTHERWISE SPECIFIED	ang	chr	deg	A2	7:1
ISO 406		app			rel. level	Preliminary
ISO 1101						
surface	linear	0.1	±.3	0.2X	±.10	0.2X
ISO 1302	angular	0.2X	±.050	0.2X	±.050	0.2X
Amphenol FCI EXGMAX R.A. RECEPTACLE ASS'Y, 3 PR, 66 POS, 6 IMLA rel. no. 10128347 Product - Customer Drw sheet 1 of 10						

For information only. This is a preliminary customer document that is subject to change without notice.

3

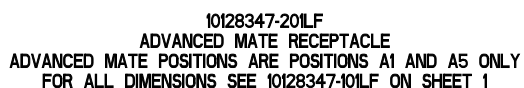
4



5

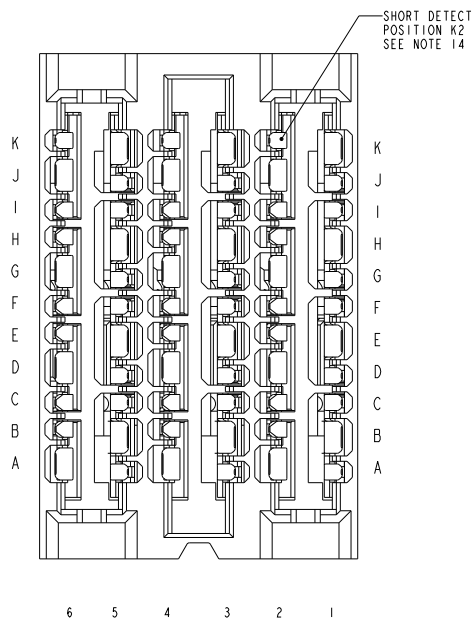
6

7

8

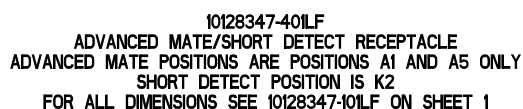




spec ref		SEE NOTES		dr		Drawn Date		APPREVISED		projection		MM		size		A2		scale		7:1				
tolerance std		TOLERANCES UNLESS OTHERWISE SPECIFIED		eng		Issue Date		APPREVISED						ech no										
ISO 406				appr						product family		ExoMax		rel level		Preliminary								
ISO 1001																								
surface		<table><tr><td>linear</td><td>0.1</td><td>± 0.1</td></tr><tr><td></td><td>0.11</td><td>± 0.1</td></tr><tr><td></td><td>0.11X</td><td>± 0.050</td></tr></table>		linear	0.1	± 0.1		0.11	± 0.1		0.11X	± 0.050	Amphenol FCI		ExoMAX R.A. RECEPTACLE		10128347		rev		6			
linear	0.1	± 0.1																						
	0.11	± 0.1																						
	0.11X	± 0.050																						
ISO 1301		<table><tr><td>angular</td><td>0°</td><td>± 0°</td></tr></table>		angular	0°	± 0°			ASS'Y, 3 PR, 66 POS, 6 IMLA		sheet 2 of 10													
angular	0°	± 0°																						
						ass. by		Product -		Customer Draw														

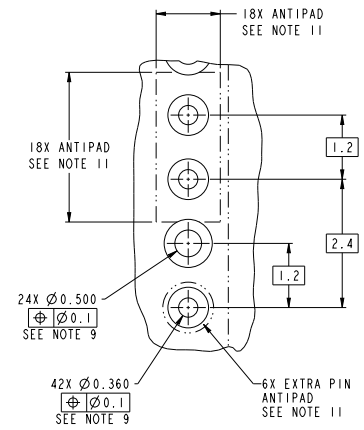
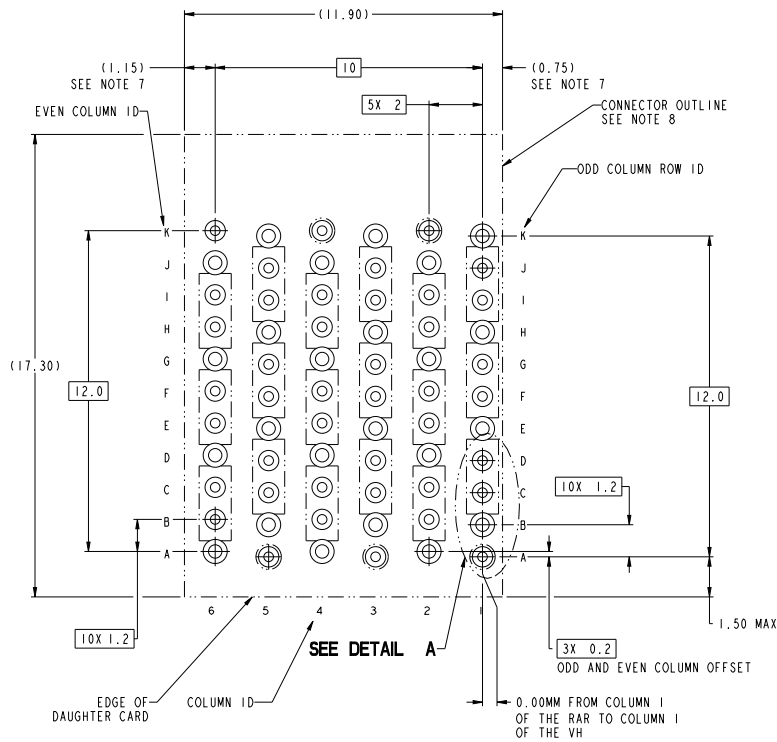


10128347-301LF
SHORT DETECT RECEPTACLE
SHORT DETECT POSITION IS K2
FOR ALL DIMENSIONS SEE 10128347-101LF ON SHEET 1

spec. ref.	SEE NOTES	dr.	revision	date	projection	MM	size	scale
tolerance std	TOLERANCES UNLESS OTHERWISE SPECIFIED	ang	dimension	dimension	MM	MM	A2	7:1
ISO 406		chr	dimension	dimension	MM	MM		
ISO 1101		appr	dimension	dimension	MM	MM		
surface	linear	0.1	±.3	Ang	0.1	±.10	Ang	0.1
ISO 1302	angular	0.1	±.050	Ang	0.1	±.050	Ang	0.1
Amphenol FCI					ExoMAX R.A. RECEPTACLE			
					ASS'Y, 3 PR, 66 POS, 6 IMLA			
					10128347			
					rev 6			
					Product - Customer Drw			
					sheet 3 of 10			

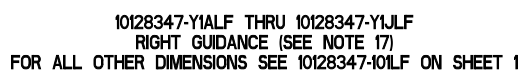




spec ref	SEE NOTES	dr	David Lewis	jdawyer	projection	MM	size	A2	scale	7:1
tolerance std	TOLERANCES UNLESS OTHERWISE SPECIFIED	chr	Tim Loran	tdoran			ecc no			
ISO 406		eng								
ISO 1101		appr			product family	ExoMax	ref level	Preliminary		
surface	linear	0.1 \pm 0.3	ExoMAX R.A. RECEPTACLE				0.128347			fe
		0.01 \pm 0.03	ASSY, 3 PR, 66 POS, 6 IMLA							
ISO 1301	angular	0.1 \pm 0.05	att. 99		Product -	Customer New	sheet 4 of			6
		0.01 \pm 0.005								

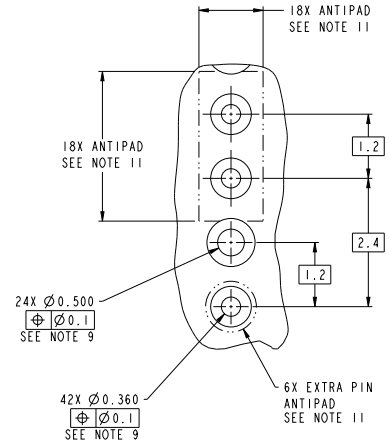
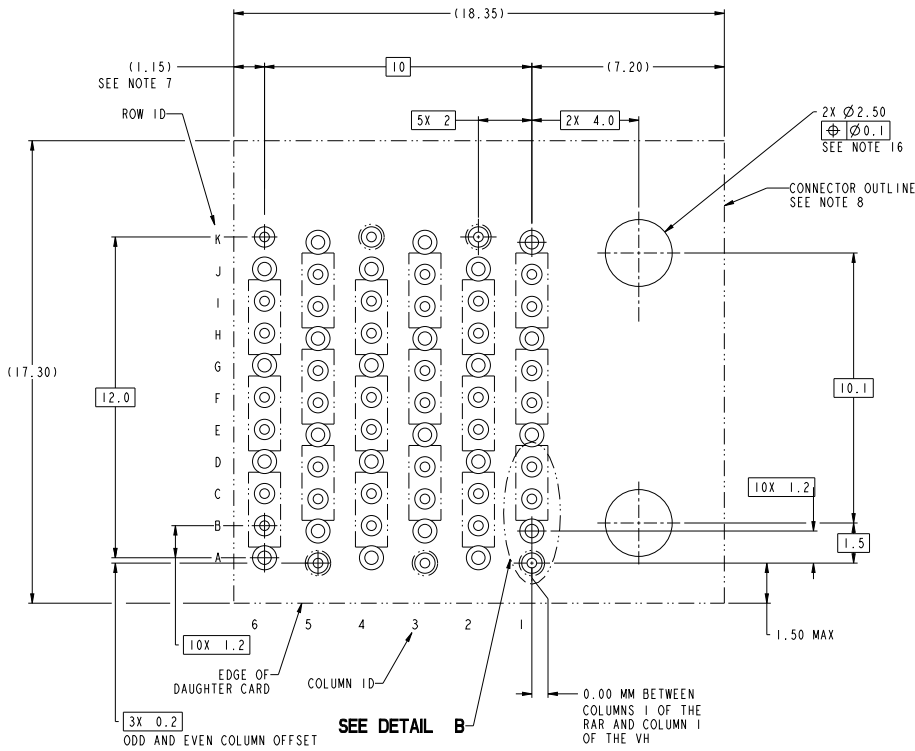


**10128347-Y01 RECOMMENDED PCB LAYOUT
COMPONENT SIDE
NOTES 7, 8, 9, & 11
SCALE 10:1**

spec. ref.	SEE NOTES	dr.	revision	date	project	product family	ExoMax	rel. level	scale
tolerance std	TOLERANCES UNLESS OTHERWISE SPECIFIED	ang	chr	app					
ISO 406									
ISO 1101									
surface	linear	0.1	±.3	0.2X	±.10	0.2X	±.050		
ISO 1302	angular	Ø	±						
Amphenol FCI ExoMAX R.A. RECEPTACLE ASS'Y, 3 PR, 66 POS, 6 IMLA cat. no. Product - Customer Drw sheet 5 of 10									



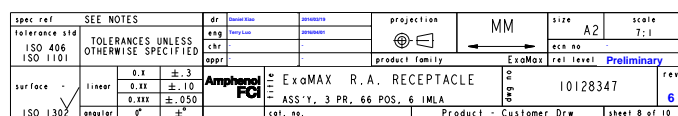
spec ref	SEE NOTES	dr	Drawn Date	APPREVISED	projection	MM	size	A2	scale	7:1
tolerance std ISO 406 ISO 1001	TOLERANCES UNLESS OTHERWISE SPECIFIED	eng	Issue Date	APPROVED			ech no			
		appr			product family	ExoMax	rel level	Preliminary		
surface -	linear	0.1 0.11 0.11X	± ± ±	0.1 0.11 0.050	Amphenol FCI	ExoMAX R.A. RECEPTACLE	10128347			rev
ISO 1301	angular	0°	0°	0°	ASS'Y, 3 PR, 66 POS, 6 IMLA	Product - Customer Draw	sheet 6 of 10			

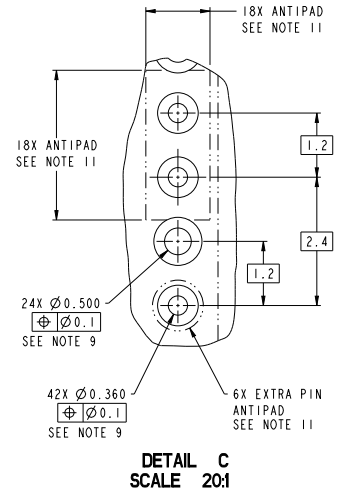
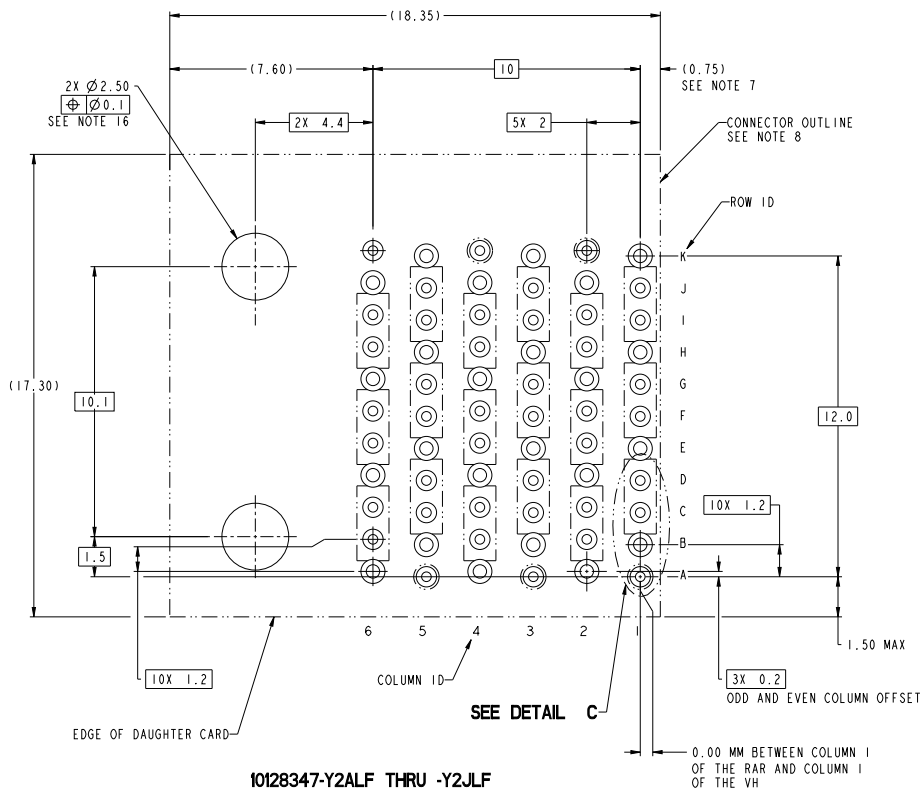


DETAIL B
SCALE 20:1

10128347-Y1ALF THRU -Y1JLF
RECOMMENDED PCB LAYOUT
COMPONENT SIDE
NOTES 7, 8, 9, 11 & 16
SCALE 10:1

spec. ref.	SEE NOTES	dr.	revision	date	project	product family	rel. level	scale	rev
tolerance std	TOLERANCES UNLESS OTHERWISE SPECIFIED	ang	chr	app	ExoMax	R.A. RECEPTACLE	10128347	7:1	6
ISO 406						ASS'Y, 3 PR, 66 POS, 6 IMLA			
ISO 1101									
ISO 1302									



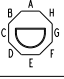
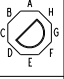

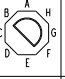
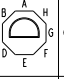
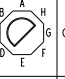
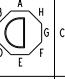
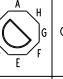
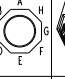



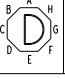

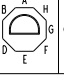
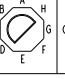
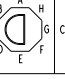
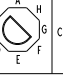
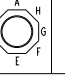




spec. ref.	SEE NOTES	dr.	revision	date	project	product family	ExoMax	rel. level	scale
tolerance std	TOLERANCES UNLESS OTHERWISE SPECIFIED	ang	chr	app					
ISO 406									
ISO 1101									
surface	linear	0.1	±.3	0.2X	±.10	0.2XX	±.050		
ISO 1302	angular	0°	±						
Amphenol FCI ExoMAX R.A. RECEPTACLE ASS'Y, 3 PR, 66 POS, 6 IMLA 10128347 Product - Customer Draw sheet 9 of 10									

10128347 - Y Y Y L F

ASSEMBLY PART NUMBER	DESCRIPTION
10128347-1YYLF	STANDARD MATE
10128347-2YYLF	ADVANCED MATE
10128347-3YYLF	SHORT DETECT
10128347-4YYLF	ADVANCED MATE & SHORT DETECT

MODULE DESCRIPTION	DESIGNATION REPRESENTED IN DASH NUMBER									BASE MODULE
WITHOUT END GUIDES MODULE (SEE SHEET 1)	01									
RIGHT GUIDANCE MODULE (SEE SHEET 6)	1A	1B	1C	1D	1E	1F	1G	1H	1J (NO KEY)	
										
LEFT GUIDANCE MODULE (SEE SHEET 8)	2A	2B	2C	2D	2E	2F	2G	2H	2J	
										

NOTES:

- CONNECTOR MATERIALS:
HOUSING: HIGH TEMP THERMOPLASTIC, BLACK, UL94-V0
IMLA PLASTIC: HIGH TEMP THERMOPLASTIC, BLACK, UL94-V0
CONTACT: COPPER ALLOY
ORGANIZER: HIGH TEMP THERMOPLASTIC, BLACK, UL94-V0
- CONTACT PLATING:
SEPARABLE INTERFACE:
PERFORMANCE-BASED PLATING, QUALIFIED TO MEET THE
REQUIREMENTS OF FCI PRODUCT SPECIFICATION GS-12-1096
INCLUDING TELCORDIA GR-1217-CORE (NOVEMBER 1995)
CENTRAL OFFICE TEST SEQUENCE

PRESS-FIT TAILS: TIN OVER NICKEL (LEAD FREE)
- PRODUCT SPECIFICATION: GS-12-1096
- APPLICATION SPECIFICATION GS-20-0361.
- PACKAGING MEETS GS-14-920 LEAD FREE LABELING
SPECIFICATION.
- PRODUCT MARKING, (PROTOTYPE, PART NUMBER & LOT CODE), ON THIS SURFACE.
- THE MINIMUM VIA SPACING BETWEEN STACKED CONNECTORS IS 2.0 MM FOR THIS RAR
AND THE MATING HEADER. REFER TO THE APPLICATION SPECIFICATION FOR DETAILS.
- CONNECTOR OUTLINE MAY BE SCREEN PRINTED ONTO CUSTOMER PCB TO
BE USED AS A GUIDE FOR MANUAL CONNECTOR PLACEMENT.
- REFER TO CUSTOMER DRAWING 10119933 FOR INFORMATION
ON PCB HOLE DIAMETERS AND PLATING OPTIONS
- THIS PRODUCT MEETS THE EUROPEAN UNION DIRECTIVES &
OTHER COUNTRY REGULATIONS AS DESCRIBED IN GS-47-0004.
- REFER TO APPLICATION SPECIFICATION FOR TRACE ROUTING
EXAMPLES THAT INCLUDE DIMENSIONS FOR ANTIPADS, TRACE
WIDTH, TRACE SPACING, ETC.
- THE HOUSING WILL WITHSTAND EXPOSURE TO 260° C FOR 10-30
SECONDS IN A CONVECTION, INFRA-RED OR VAPOR PHASE REFLOW OVEN.
- THE ADVANCED MATE RECEPTACLE, 10128347-2YYLF, WHEN MATED
WITH AN ADVANCED MATE VERTICAL HEADER OR AN ADVANCED MATE RIGHT ANGLE
HEADER WILL PROVIDE 2 PAIRS OF MATING CONTACTS THAT MATE 0.75MM BEFORE
THE REMAINDER OF THE SIGNAL AND GROUND CONTACTS.

- THE SHORT DETECT RECEPTACLE, 10128347-3YYLF, WHEN MATED
WITH A STANDARD MATE VERTICAL HEADER OR A STANDARD MATE RIGHT ANGLE
HEADER WILL PROVIDE 1 PAIR OF MATING CONTACTS THAT MATE 1.00MM AFTER THE
REMAINDER OF THE SIGNAL AND GROUND CONTACTS.
- THE ADVANCE MATE/SHORT DETECT RECEPTACLE, 10128347-4YYLF, WHEN MATED
WITH AN ADVANCED MATE VERTICAL HEADER OR AN ADVANCED MATE RIGHT ANGLE HEADER
WILL PROVIDE 2 PAIRS OF MATING CONTACTS THAT MATE 0.75MM BEFORE THE
REMAINDER OF THE SIGNAL AND GROUND CONTACTS AND 1 PAIR OF MATING
CONTACTS THAT MATE 1.00MM AFTER THE REMAINDER OF THE SIGNAL AND GROUND CONTACTS.
- FOR CONNECTORS WITH EITHER A RIGHT OR LEFT GUIDE MODULE, TWO PHILLIPS PAN HEAD M2 HOLD DOWN
SCREWS MUST BE USED TO SECURE THE CONNECTOR TO THE PCB. THE SCREW LENGTH SHALL BE
2.0 - 6.0mm PLUS THE THICKNESS OF THE BOARD. SCREWS ARE NOT PROVIDED WITH CONNECTOR.
- LEFT / RIGHT INTEGRATED GUIDE ORIENTATION IS DETERMINED BY THE LOCATION OF THE GUIDE
FEATURE WHEN LOOKING AT THE MATING FACE OF THE RIGHT ANGLE RECEPTACLE. THE LEFT / RIGHT
DESIGNATION OF THE MATING HEADER IS DEFINED BY THE RIGHT ANGLE RECEPTACLE THAT IT MATES
WITH (i. e. A RIGHT GUIDE VERTICAL HEADER MATES WITH A RIGHT GUIDE RIGHT ANGLE RECEPTACLE.)
- ALL GROUND CONTACTS ARE COMMONED WITHIN A COLUMN.

spec. ref.		SEE NOTES			dr.	projection	MM	size	scale	
tolerance 114		TOLERANCES UNLESS OTHERWISE SPECIFIED			ang			A2	1:1	
ISO 406					chp					ecc no
ISO 1101					app					rel. level
					product family		ExoMax	Preliminary		
surface -		linear	0.1 0.01 0.001	±.3 ±.10 ±.050	Amphenol FCI ExoMAX R.A. RECEPTACLE		10128347		rev	
ISO 1302		angular	0°	±	ASS'Y, 3 PR, 66 POS, 6 IMLA				6	
				cat. no.	Product - Customer Drw		sheet 10 of 10			