

Excellent Integrated System Limited

Stocking Distributor

Click to view price, real time Inventory, Delivery & Lifecycle Information:

[FCI](#)
[10131493-081402LF](#)

For any questions, you can email us directly:
sales@integrated-circuit.com

10131493-AA|B|C|D|E|LF

AA	POSITION
04	2X20
06	2X30
08	2X40
10	2X50
12	2X60
14	2X70
16	2X80
18	2X90
20	2X100

B	FOR PLUG, SEE DWG. NO. 61083			
	Plug 1	Plug 2	Plug 3	Plug 4
COMBINATION OF MATED HEIGHT				
Recep 1				

E	PACKAGING
0	TUBE WITHOUT METAL CAP
2	T&R WITH METAL CAP
9	TUBE WITH METAL CAP
6	T&R WITHOUT METAL CAP (WITH KAPTON TAPE)

D	POLARIZATION PEG	HOLD DOWN
0	YES	NO
2	NO	NO

NOTES:

- MATERIAL
HOUSING: HIGH TEMPERATURE RESISTANT PLASTIC
TERMINAL: COPPER ALLOY
- PLATING: AS SHOWN IN TABLE.
- SEE GS-12-547 FOR PRODUCT SPEC.
- SEE GS-15-551 AND GS-14-816 FOR THE DETAILS OF PACKAGING.
PRODUCT WILL BE PACKED IN ACCORDANCE TO GLOBAL PROCEDURE GS-14-920.
- PACKAGING OPTION 2: "NOT ALL SIZES AVAILABLE; CHECK WITH FACTORY".
- THIS PRODUCT MEETS THE EUROPEAN UNION DIRECTIVES AND OTHER COUNTRY REGULATIONS AS DESCRIBED IN GS-22-008.
- THE HOUSING WITH WITHSTAND EXPOSURE UP TO 260° PEAK TEMPERATURE FOR 30 SECONDS IN A CONVECTION, INFRA-RED OR VAPOR REFLOW OVEN.
- PLATING OPTION "4" IS LEADFREE ALTERNATIVE FOR OPTION "0", AND OPTION "6" IS LEADFREE ALTERNATIVE FOR OPTION "1".
- A Δ SYMBOL WILL BE NEXT TO ANY DIMENSION, VIEW OR NOTE WHICH HAS BEEN MODIFIED WITH THE CURRENT DRAWING REVISION.

C	PLATING ON CONTACT AREA
4	GOLD 0.2um MIN / PURE TIN 2um MIN (LEAD FREE) NICKEL UNDERPLATE OVERALL 1.27um MIN
5	GOLD 0.38um MIN / PURE TIN 2um MIN (LEAD FREE) NICKEL UNDERPLATE OVERALL 1.27um MIN
6	GOLD FLASH (0.1um MIN) OVER PALLADIUM-NICKEL 0.76um MIN / PURE TIN 2um MIN (LEAD FREE) NICKEL UNDERPLATE OVERALL 1.27um MIN



Copyright FCI

spec ref	tolerance std	dr	Guomin Sun	2014-10-28	projection	mm	size	A3	scale	4:1		
	TOLERANCES UNLESS OTHERWISE SPECIFIED linear: 0.X ±0.2, 0.XX ±0.15, 0.XXX ±0.10 angular: σ ±2°	eng	Guomin Sun	2014-10-28		mm	A3	4:1	RELEASED	rev		
		chr	ZK Hu	2014-10-28							ecn no	10131493
		appr	Feagle Pan	2014-10-28							rel level	A
surface	∇	title BERGSTAK 0.8mm BTB RECEPTACLE ASSY		product family	Bergstak	cat. no.	10131493	Product - Customer drw	sheet 1 of 3			

Prod. No. - 802 C - 2009-08-08

1

2

PDS: Rev :A

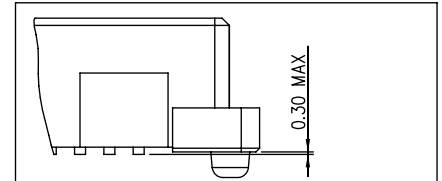
STATUS:Released

3

Printed: Oct 31, 2014

4

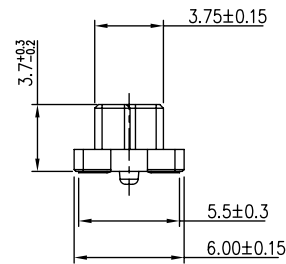
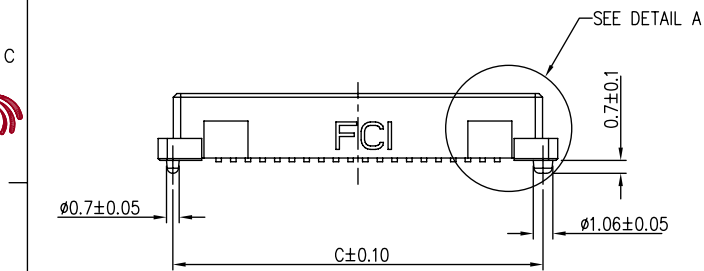
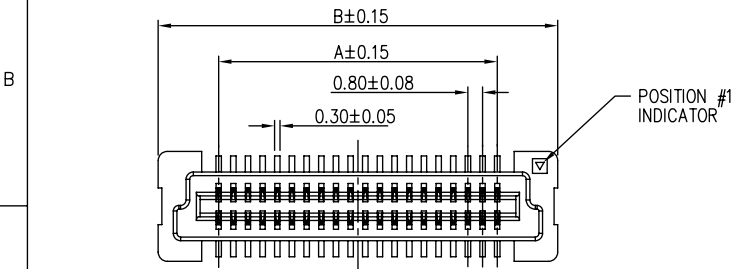
PRODUCT NO.	NUMBER OF POSITIONS	DIMENSION		
		A	B	C
10131493-041***	2X20	15.2	21.8	20.2
10131493-061***	2X30	23.2	29.8	28.2
10131493-081***	2X40	31.2	37.8	36.2
10131493-101***	2X50	39.2	45.8	44.2
10131493-121***	2X60	47.2	53.8	52.2
10131493-141***	2X70	55.2	61.8	60.2
10131493-161***	2X80	63.2	69.8	68.2
10131493-181***	2X90	71.2	77.8	76.2
10131493-201***	2X100	79.2	85.8	84.2



COPLANARITY OF TAIL:
0.1 MAX. APPLIED TO 2X20 TO 2X70 POS.
0.13 MAX APPLIED TO 2X80 TO 2X100 POS.

HIGH PRECISION COPLANARITY IS AVAILABLE
FOR 2X80 TO 2X100 POS.
PLS REFER TO PRINT 10069524.

DETAIL A
SCALE 10:1

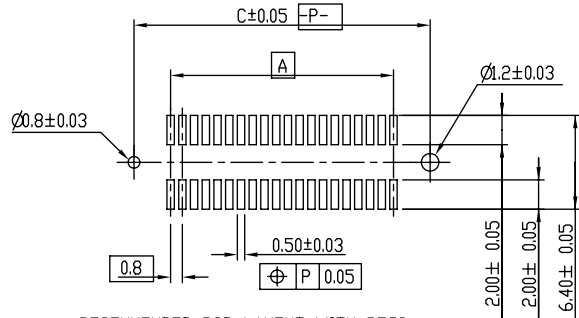


RECEPTACLE 1

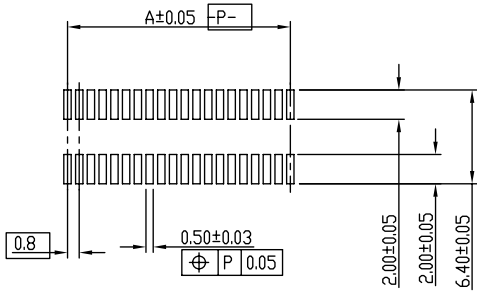
spec ref	tolerance std	TOLERANCES UNLESS OTHERWISE SPECIFIED		dr	Guomin Sun	2014-10-28	projection	mm	size	A3	scale	5:1	
				eng	Guomin Sun	2014-10-28			ecn no				
				chr	ZK Hu	2014-10-28		product family	Bergstak	rel level	RELEASED		
				appr	Feagle Pan	2014-10-28							
surface	✓	linear	0.X ±0.2 0.XX ±0.15 0.XXX ±0.10			title		BERGSTAK 0.8mm BTB		eng no	10131493	rev	A
		angular	σ ±2°	www.fci.com		cat. no.		Product	Customer	draw		sheet 2 of 3	

Pub. No. - 801 C - 2009-08-01

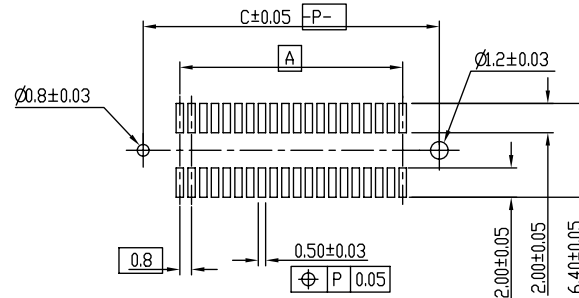
RECEPTACLE 1



RECOMMENDED PCB LAYOUT WITH PEGS
FOR NO. OF POSITION 2X20, 2X30, 2X40, 2X50, 2X60



RECOMMENDED PCB LAYOUT WITHOUT PEGS AND HOLD-DOWN



RECOMMENDED PCB LAYOUT WITH PEGS
FOR NO. OF POSITION 2X70, 2X80, 2X90, 2X100

Copyright FCI

spec ref	dr Guomin Sun 2014-10-28		projection	mm	size A3	scale 5:1		
tolerance std	eng Guomin Sun 2014-10-28			mm	ecn no	rel level RELEASED		
TOLERANCES UNLESS OTHERWISE SPECIFIED		chr ZK Hu 2014-10-28						
surface		linear	0X	±0.2		title BERGSTAK 0.8mm BTB RECEPTACLE ASSY www.fci.com cat. no. - Product - Customer drw		
			0XX	±0.15			eng 10131493	rev A
			0XXX	±0.10				
		angular	0°	±2°		sheet 3 of 3		

10131493-081402LF

1

2

3

4

PDS: Rev :A

STATUS:Released

Printed: Oct 31, 2014