

Excellent Integrated System Limited

Stocking Distributor

Click to view price, real time Inventory, Delivery & Lifecycle Information:

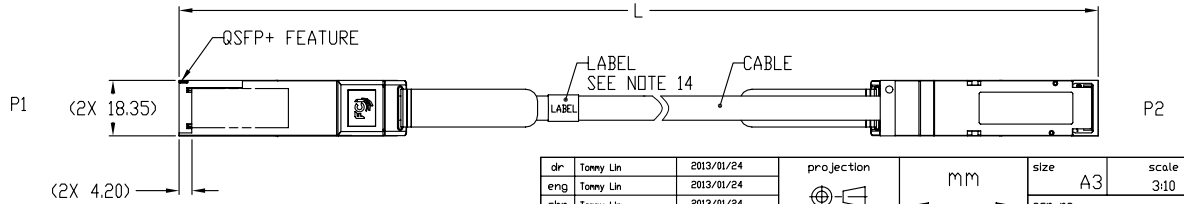
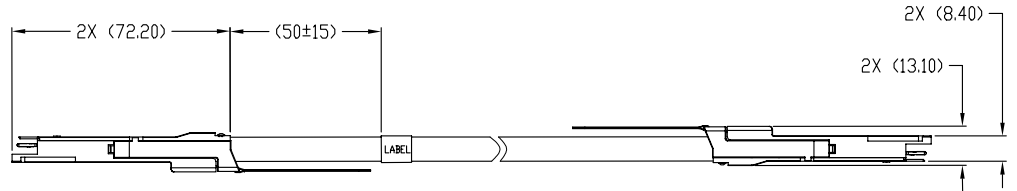
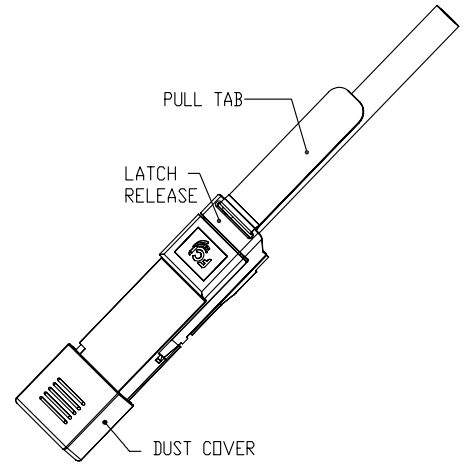
[FCI](#)

[10124176-3010LF](#)

For any questions, you can email us directly:

sales@integrated-circuit.com

FCI P/N (SEE NOTE 10)	AWG	L(Meter)	NOTE
10124176-3010LF	28	1.0	NON-HALOGEN FREE
10124176-3030LF	28	3.0	
10124176-4050LF	26	5.0	
10124176-5070LF	24	7.0	



dr	Tomy Lin	2013/01/24	projection	mm	size	A3	scale	3:10
eng	Tomy Lin	2013/01/24		mm	ecn no	rel level	rev	A
chr	Tomy Lin	2013/01/24						
appr	Roger Cheng	2013/01/24	product family		QSFP PLUG			
		title		QSFP+ (PASSIVE) ASSEMBLY		part no		10124176
www.fcicom		cat. no.		-		Product - Customer		Drw sheet 1 of 3

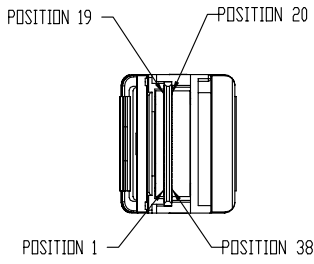
PDS: Rev :A

STATUS:Released

Printed: Jun 05, 2013



Copyright FCI



LOW SPEED SIGNALS P1 & P2	
POSITION	SYMBOL
8	ModSelL
9	ResetL
10	VccRx
11	SCL
12	SDA
27	ModPrsL
28	IntL
29	VccTx
30	Vcc1
31	LPMODE

TABLE 1

WIRING LIST (SEE NOTE 6)					
END P1			END P2		
POSITION	SYMBOL		POSITION	SYMBOL	
1	GND (TX)	---▷	20	GND (RX)	
2	TX2n	---▷	21	RX2n	
3	TX2p	---▷	22	RX2p	
4	GND (TX)	---▷	23	GND (RX)	
5	TX4n	---▷	24	RX4n	
6	TX4p	---▷	25	RX4p	
7	GND (TX)	---▷	26	GND (RX)	
13	GND (RX)	◀---	32	GND (TX)	
14	RX3p	◀---	33	TX3p	
15	RX3n	◀---	34	TX3n	
16	GND (RX)	◀---	35	GND (TX)	
17	RX1p	◀---	36	TX1p	
18	RX1n	◀---	37	TX1n	
19	GND (RX)	◀---	38	GND (TX)	
20	GND (RX)	◀---	1	GND (TX)	
21	RX2n	◀---	2	TX2n	
22	RX2p	◀---	3	TX2p	
23	GND (RX)	◀---	4	GND (TX)	
24	RX4n	◀---	5	TX4n	
25	RX4p	◀---	6	TX4p	
26	GND (RX)	◀---	7	GND (TX)	
32	GND (TX)	---▷	13	GND (RX)	
33	TX3p	---▷	14	RX3p	
34	TX3n	---▷	15	RX3n	
35	GND (TX)	---▷	16	GND (RX)	
36	TX1p	---▷	17	RX1p	
37	TX1n	---▷	18	RX1n	
38	GND (TX)	---▷	19	GND (RX)	
SHIELD-----			SHIELD-----▷		

TABLE 2

dr	Tomy Lin	2013/01/24	projection	mm	size	A3	scale	3:10	
eng	Tomy Lin	2013/01/24			ecn no				
chr	Tomy Lin	2013/01/24							
appr	Roger Cheng	2013/01/24	product family	QSFP PLUG	rel level				
		title		QSFP+ (PASSIVE) ASSEMBLY	rel no		10124176	rev	A
www.fcicom		cat. no.	-		Product - Customer	Drw	sheet 2 of 3		

PDS: Rev :A

STATUS:Released

Printed: Jun 05, 2013

NOTES:

- 1- MATERIAL:
 CASTINGS: ZINC ALLOY/ COPPER UNDERPLATE/ NICKEL OVERPLATE
 PULL TAB: THERMOPLASTIC POLYMER
 LATCH RELEASE: ZINC DIECAST, NICKEL OVERPLATE
 DRIVE SCREWS: STAINLESS STEEL
 STRAIN RELIEF COLLAR: BRASS
 SPRING: STAINLESS STEEL
 LOCKTITE
 PADDLE CARD: PRINTED CIRCUIT SUBSTRATE
- 2- THIS PRODUCT MEETS THE RESTRICTION OF HAZARDOUS SUBSTANCES IN ELECTRICAL AND ELECTRONIC EQUIPMENT (RoHS) "Directive 2011/65/EU".
- 3- THIS DIMENSION 'L' IS A FINISHED PRODUCT LENGTH.
- 4- UNLESS OTHERWISE SPECIFIED ASSEMBLED LENGTH TOLERANCE IS:

L	TOLERANCE
< 1M	± 25mm
1M-10M	± 2L
>= 10M	+ 0/- 24L
- 5- ALL CABLE ASSEMBLIES SHALL BE 100% TESTED FOR CONTINUITY AS DEFINED IN WIRING LIST.
- 6- IMPEDANCE: 100 Ω DIFFERENTIAL.
- 7- OTHER TESTING PERFORMED AS REQUIRED BY PRODUCT SPECIFICATION: GS-12-622.
- 8- PACKAGING OF LEAD FREE PRODUCTS MEETS LABELING AND PACKAGING PER SPECIFICATION GS-14-920. PACKAGE CABLE ASSEMBLIES PER GS-14-1272. DUST CAPS ARE TO BE ASSEMBLED PRIOR TO PACKAGING. FCI PACKAGE TRACKING BAG LABEL IS ONLY FOR REFERENCE.
- 9- A '△' SYMBOL WILL BE NEXT TO ANY DIMENSION, VIEW, OR NOTE WHICH HAS BEEN MODIFIED WITH THE CURRENT DRAWING REVISION. THE CURRENT REVISION WILL BE SHOWN IN THE SYMBOL.
- 10- HALOGEN FREE RAW CABLE CAN BE USED AS A SUBSTITUTE ON NON-HF PRODUCT NUMBERS.
- 11- LONGER LENGTH APPLICATIONS REQUIRE HOST SYSTEM PREEMPHASIS AND/OR EQUALIZATION.
- 12- EACH CABLE WILL BE PACKAGED IN A ESD BAG INDIVIDUALLY.
- 13- LABEL FOR CABLE CONTENTS AS BELOW.

FCI, MADE IN CHINA
 FCI P/N
 REVISION
 SERIAL NUMBER

EXAMPLE →

FCI, MADE IN CHINA
 10124176-3010LF
 REV.A
 CNI323QP103L0001

FONT SHALL BE CLEARLY VISIBLE AND BLACK IN COLOR.
 SERIAL NUMBER IS ONLY USED FOR TRACKING PRODUCT :

CNI323QP103L0001

CN PRESENT MADE IN CHINA
 YYWWYEAR AND WEEK
 PRESENT PRODUCT BASE NUMBER("QP")

SEQUENCE NUMBER(0001-9999)
 L IS NON-HALOGEN FREE TYPE
 CABLE AWG(3 IS 28AWG; 4 IS 26AWG; 5 IS 24AWG)
 LENGTH(10 IS 1.0 METER,30 IS 3.0 METERS,ETC)

dr	Tommy Lin	2013/01/24	projection		size	A3	scale	3:10
eng	Tommy Lin	2013/01/24			M M	ecn no	rel level	rev A
chr	Tommy Lin	2013/01/24						
appr	Roger Cheng	2013/01/24	product family		QSFP PLUG			
			title QSFP+ (PASSIVE) ASSEMBLY			part no 10124176		
www.fcicom			cat. no. -			Product - Customer Drw		
			sheet 3 of 3					