

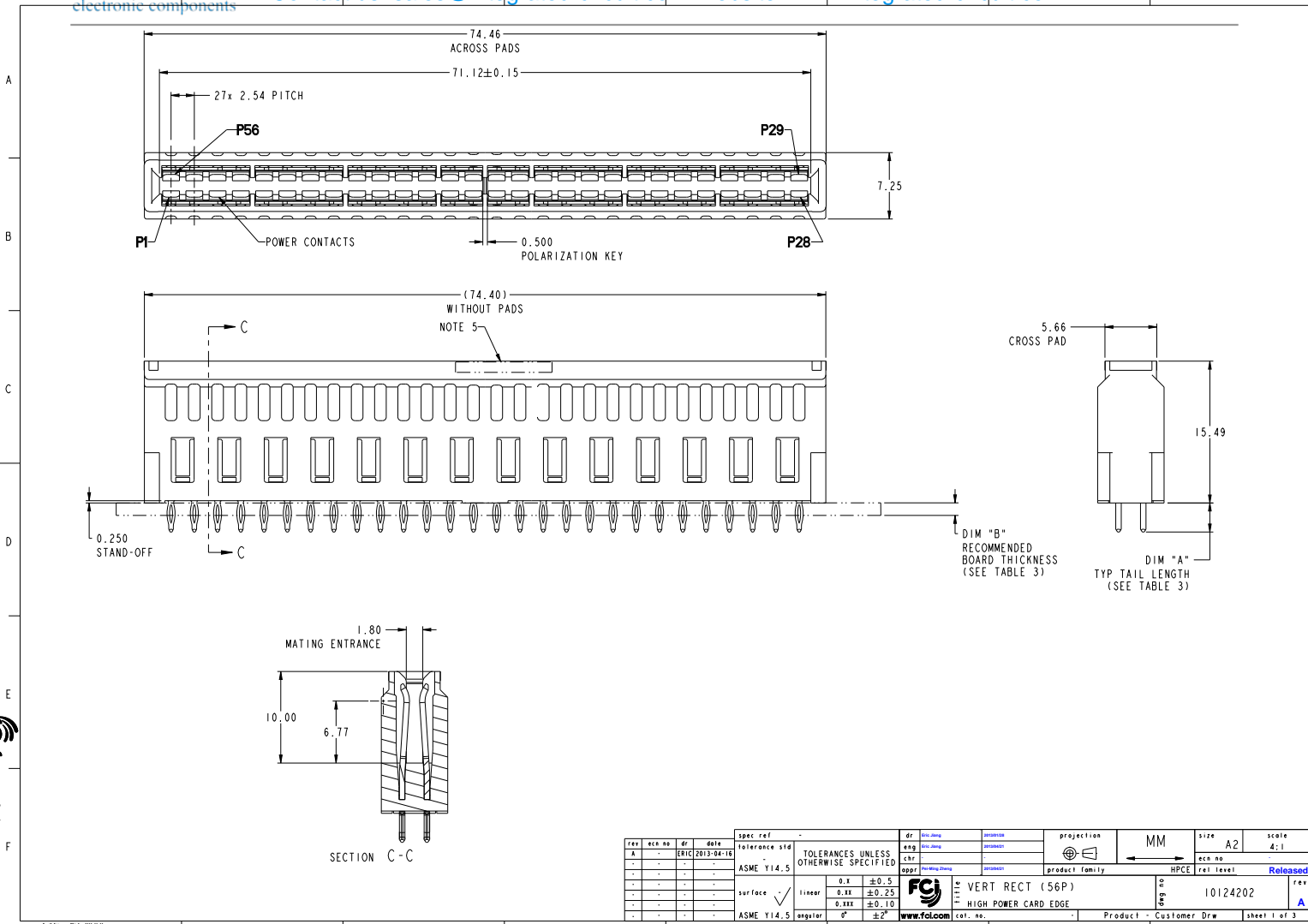
Excellent Integrated System Limited

Stocking Distributor

Click to view price, real time Inventory, Delivery & Lifecycle Information:

[FCI](#)
[10124202-002LF](#)

For any questions, you can email us directly:
sales@integrated-circuit.com



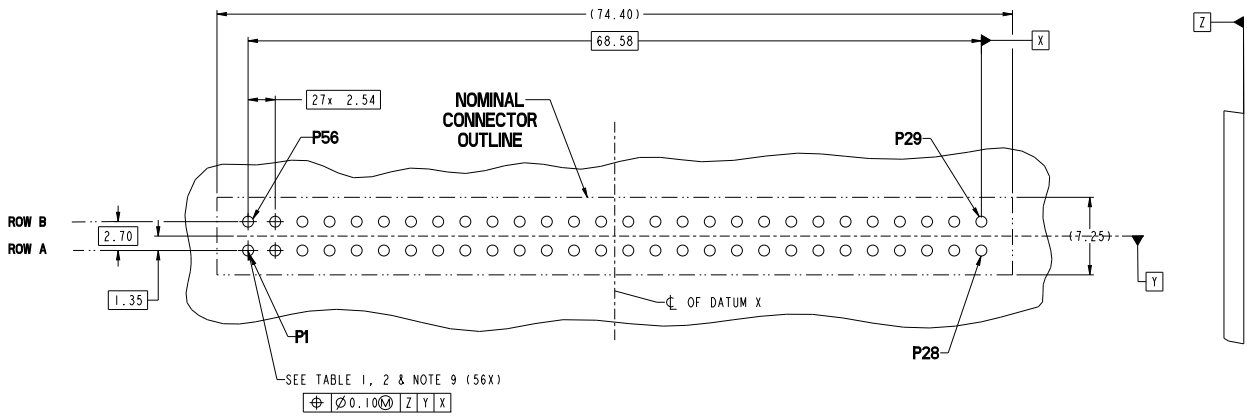
Copyright FCI

SECTION C-C

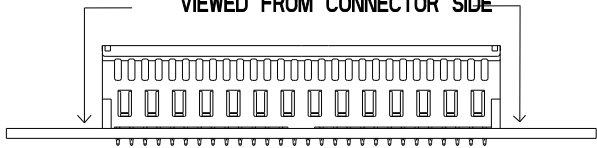
rev	ecr no	dr	date	spec ref	tolerance std	dr	chk	appvr	projection	MM	size	scale																							
A	-	ERIC	2013-04-16	-	ASME Y14.5	www.fci.com	col. no.	-	product family	HPCE	rel level	Released																							
TOLERANCES UNLESS OTHERWISE SPECIFIED						<table border="1"> <tr> <td>linear</td> <td>0.X</td> <td>±0.5</td> </tr> <tr> <td></td> <td>0.XX</td> <td>±0.25</td> </tr> <tr> <td></td> <td>0.XXX</td> <td>±0.10</td> </tr> </table>		linear	0.X	±0.5		0.XX	±0.25		0.XXX	±0.10	<table border="1"> <tr> <td>surface</td> <td>ASME Y14.5</td> <td>angular</td> <td>°</td> <td>±2°</td> </tr> </table>		surface	ASME Y14.5	angular	°	±2°	<table border="1"> <tr> <td>product family</td> <td>HPCE</td> </tr> <tr> <td>rel level</td> <td>Released</td> </tr> </table>		product family	HPCE	rel level	Released	<table border="1"> <tr> <td>acc no</td> <td>10124202</td> </tr> <tr> <td>rev</td> <td>A</td> </tr> </table>		acc no	10124202	rev	A
linear	0.X	±0.5																																	
	0.XX	±0.25																																	
	0.XXX	±0.10																																	
surface	ASME Y14.5	angular	°	±2°																															
product family	HPCE																																		
rel level	Released																																		
acc no	10124202																																		
rev	A																																		
<p>PDS: Rev: A STATUS: Released Printed: Apr 22, 2013</p>																																			

CONTACT TYPE	TOP LAYER DESCRIPTION	TABLE 1 (HPCE / SOLDER TAILS) PLATED THROUGH-HOLE REQUIREMENTS				
		DRILLED HOLE DIAMETER	COPPER THICKNESS	TIN-LEAD THICKNESS	TIN THICKNESS	FINISHED HOLE DIAMETER
POWER & SIGNAL	TIN-LEAD	1.10-1.16 (1.15 DRILL)	0.025 - 0.050	0.005 - 0.015	--	0.94 - 1.10
	IMMERSION TIN	1.10-1.16 (1.15 DRILL)	0.025 - 0.050	--	0.9 - 1.5um	0.94 - 1.10
	COPPER (SEE NOTE 8)	1.10-1.16 (1.15 DRILL)	0.025 - 0.050	--	--	0.94 - 1.10

CONTACT TYPE	TOP LAYER DESCRIPTION	TABLE 2 (HPCE / PRESS-FIT TAILS) PLATED THROUGH-HOLE REQUIREMENTS				
		DRILLED HOLE DIAMETER	COPPER THICKNESS	TIN-LEAD THICKNESS	TIN THICKNESS	FINISHED HOLE DIAMETER
POWER & SIGNAL	TIN-LEAD	0.81-0.86 (0.85 DRILL)	0.025 - 0.050	0.005 - 0.015	--	0.65 - 0.80
	IMMERSION TIN	0.81-0.86 (0.85 DRILL)	0.025 - 0.050	--	0.9 - 1.5um	0.70 - 0.80
	COPPER (SEE NOTE 8)	0.81-0.86 (0.85 DRILL)	0.025 - 0.050	--	--	0.70 - 0.80



RECOMMENDED PCB LAYOUT VIEWED FROM CONNECTOR SIDE



spec ref	-	dr	Wu Jiong	designed	projection	MM	size	A2	scale	1:1
tolerance std	ASME Y14.5	eng	Wu Jiong	checked	product family	HPCE	rel level	Released	rev	A
surface	linear	0.1	±0.5	0.2X	±0.25	0.2X	±0.10	angular	0°	±2°
TOLERANCES UNLESS OTHERWISE SPECIFIED		FCI		VERT RECT (56P)		HIGH POWER CARD EDGE		10124202		Product - Customer Draw
ASME Y14.5		www.fci.com		cat. no.		Product - Customer Draw		sheet 2 of 3		Printed: Apr 22, 2013

PDS: Rev: A

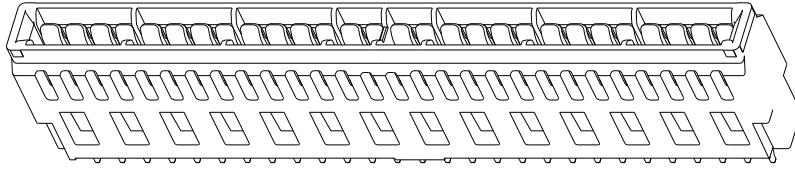
STATUS: Released

Printed: Apr 22, 2013

Copyright FCI

HPCE PART NUMBER (TABLE 3)

PART NUMBER	TAIL TYPE	DIM "A" TYPICAL TAIL LENGTH	DIM "B" RECOMMENDED BOARD THICKNESS
10124202-001LF	SOLDER	3.17 ±0.25	1.59 - 2.38
10124202-002LF	PRESS-FIT		1.57 MIN



NOTES:

- CONNECTOR MATERIALS:
HOUSING: HIGH TEMPERATURE THERMAL PLASTIC, BLACK
UL 94V-0 COMPLIANT
CONTACTS: HIGH PERFORMANCE COPPER ALLOY.
- CONTACT FINISH REF. GS-12-604 SECTION 5.2.
- PRODUCT SPECIFICATION: GS-12-604.
- APPLICATION SPECIFICATION: GS-20-128.
- PRODUCT MARKING (FCI - PART NUMBER & DATE CODE) ON HOUSING IN AREA SHOWN.
- PACKAGING MEETS FCI SPECIFICATION GS-14-937.
- HOUSING COMPONENT WILL WITHSTAND EXPOSURE TO 260°C PEAK TEMPERATURE FOR 60 SECONDS IN A CONVECTION, INFRA-RED, OR VAPOR PHASE REFLOW OVEN.
- COPPER PLATING THICKNESS IN CENTER OF VIA-HOLE CAN BE NO MORE THAN 0.003 LESS THAN OTHER AREAS.
- ALL HOLE SIZES ARE FINISHED HOLE SIZES.
- PRESS-FIT APPLICATION TOOL DRAWING:10119453
- DRAWING 10124282 FOR BUSBAR DETAIL

spec ref	-	dr	luc.dang	designed	projection	MM	size	A2	scale	A:1
tolerance std	TOLERANCES UNLESS OTHERWISE SPECIFIED	eng	luc.dang	checked	product family	HPCE	rel level	Released	rev	
ASME Y14.5		chr								
surface	linear	0.1	±0.5	FCI	VERT RECT (56P)		10124202			
		0.2X	±0.25		HIGH POWER CARD EDGE					
ASME Y14.5	angular	0°	±2°	www.fci.com						

PDS: Rev: A

STATUS: Released

Printed: Apr 22, 2013