

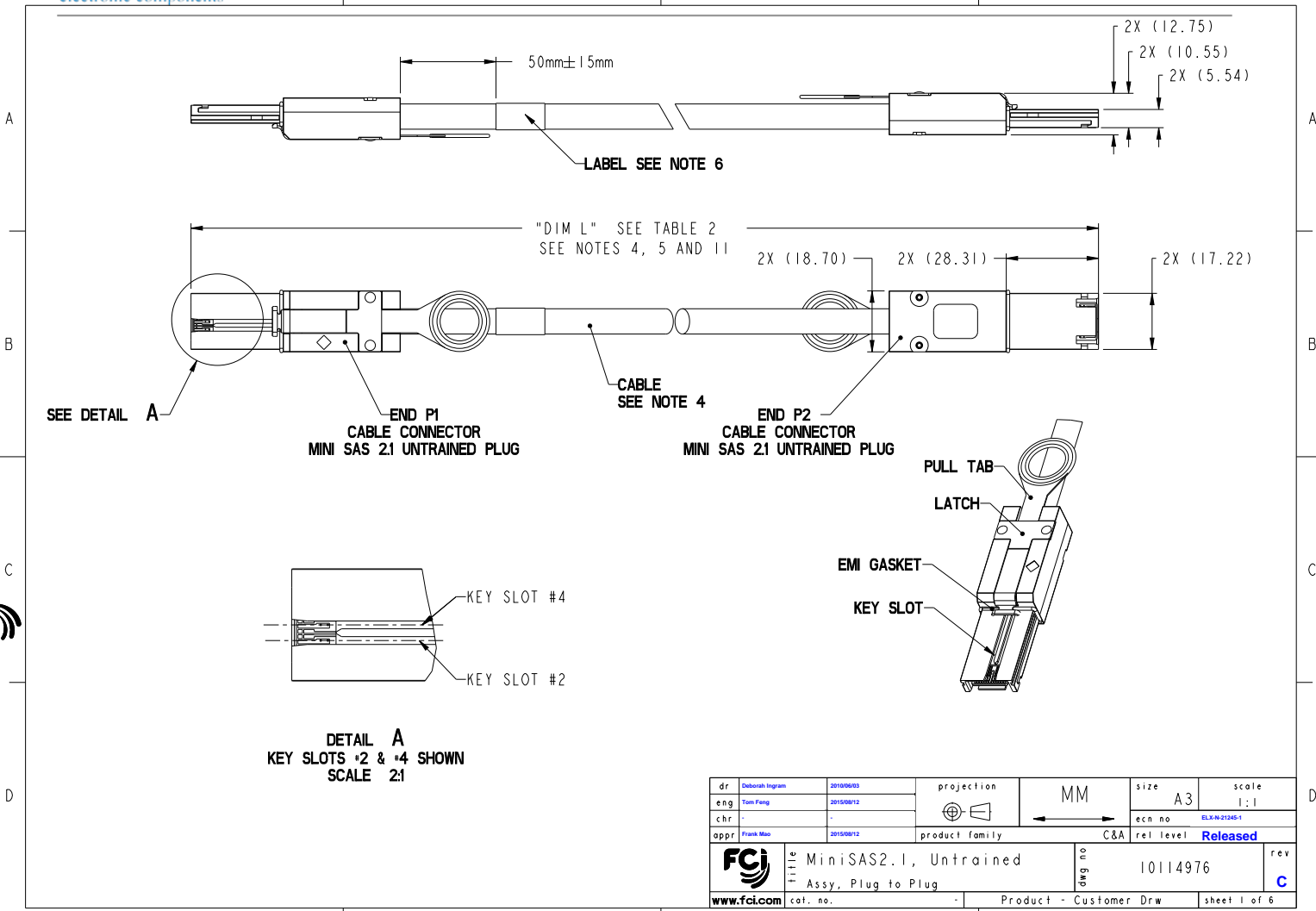
## Excellent Integrated System Limited

Stocking Distributor

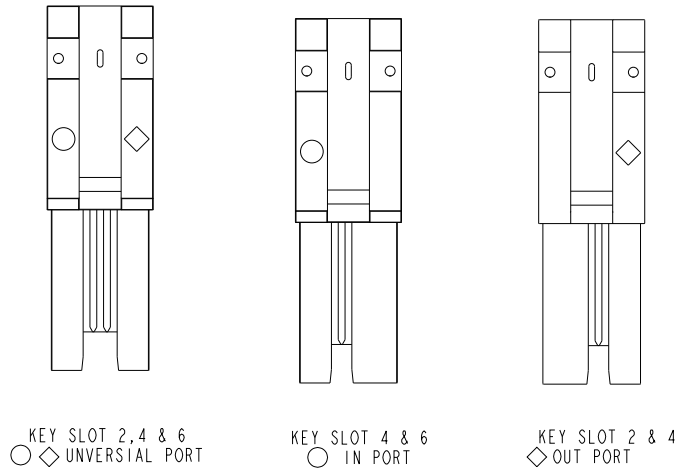
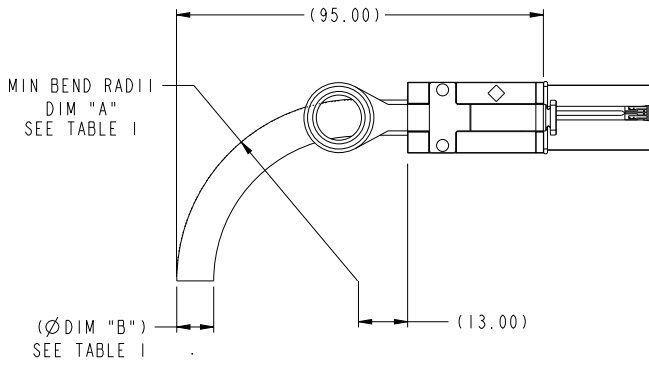
Click to view price, real time Inventory, Delivery & Lifecycle Information:

[FCI](#)  
[10114976-N050002LF](#)

For any questions, you can email us directly:  
[sales@integrated-circuit.com](mailto:sales@integrated-circuit.com)



Copyright FCI.



**MINI SAS 2.1 UNTRAINED KEYING OPTIONS**

**BEND RADIUS  
(24 AWG SHOWN)**

TABLE 1			
CABLE	DESCRIPTION	DIM "A"	DIM "B"
24 AWG	NON-HF	R52.5	Ø10.2mm REF
26 AWG	NON-HF	R47.5	Ø9.5mm REF
28 AWG	NON-HF	R35.5	Ø8.0mm REF

dr	Deborah Ingram	20150803	projection	MM	size	A3	scale	1:1
eng	Tom Feng	20150812			ecn no	ELX-N21045-1		
chr	-	-			rel level	Released		
appr	Frank Mao	20150812	product family	C&A				
		title MiniSAS2.1, Untrained Assy, Plug to Plug		dwg no 10114976	rev C			
www.fci.com		cat. no.	-	Product - Customer Drw	sheet 2 of 6			



Copyright FCI.

**TABLE 2 MINI SAS 2.1 UNTRAINED CABLE ASSEMBLY (NON-HF)**

PRODUCT NUMBER SEE NOTE 4	DESCRIPTION	GAUGE	DIM L' LENGTH	END P1 KEY SLOT	END P2 KEY SLOT
10114976-P010001LF	X4 SAS CABLE ASSEMBLY	28 AWG	1M	2, 4	4, 6
10114976-P020001LF	X4 SAS CABLE ASSEMBLY	28 AWG	2M	2, 4	4, 6
10114976-P030001LF	X4 SAS CABLE ASSEMBLY	28 AWG	3M	2, 4	4, 6
10114976-P040001LF	X4 SAS CABLE ASSEMBLY	28 AWG	4M	2, 4	4, 6
10114976-P050001LF	X4 SAS CABLE ASSEMBLY	28 AWG	5M	2, 4	4, 6
10114976-P060001LF	X4 SAS CABLE ASSEMBLY	28 AWG	6M	2, 4	4, 6
10114976-N040001LF	X4 SAS CABLE ASSEMBLY	26 AWG	4M	2, 4	4, 6
10114976-N050001LF	X4 SAS CABLE ASSEMBLY	26 AWG	5M	2, 4	4, 6
10114976-N060001LF	X4 SAS CABLE ASSEMBLY	26 AWG	6M	2, 4	4, 6
10114976-N070001LF	X4 SAS CABLE ASSEMBLY	26 AWG	7M	2, 4	4, 6
10114976-M060001LF	X4 SAS CABLE ASSEMBLY	24 AWG	6M	2, 4	4, 6
10114976-M070001LF	X4 SAS CABLE ASSEMBLY	24 AWG	7M	2, 4	4, 6
10114976-M080001LF	X4 SAS CABLE ASSEMBLY	24 AWG	8M	2, 4	4, 6
10114976-M090001LF	X4 SAS CABLE ASSEMBLY	24 AWG	9M	2, 4	4, 6
10114976-M100001LF	X4 SAS CABLE ASSEMBLY	24 AWG	10M	2, 4	4, 6
10114976-P005002LF	X4 SAS CABLE ASSEMBLY	28 AWG	0.5M	2, 4, 6	2, 4, 6
10114976-P006002LF	X4 SAS CABLE ASSEMBLY	28 AWG	0.6M	2, 4, 6	2, 4, 6
10114976-P012502LF	X4 SAS CABLE ASSEMBLY	28 AWG	1.25M	2, 4, 6	2, 4, 6
10114976-P015002LF	X4 SAS CABLE ASSEMBLY	28 AWG	1.5M	2, 4, 6	2, 4, 6
10114976-P010002LF	X4 SAS CABLE ASSEMBLY	28 AWG	1M	2, 4, 6	2, 4, 6
10114976-P020002LF	X4 SAS CABLE ASSEMBLY	28 AWG	2M	2, 4, 6	2, 4, 6
10114976-P030002LF	X4 SAS CABLE ASSEMBLY	28 AWG	3M	2, 4, 6	2, 4, 6
10114976-P035002LF	X4 SAS CABLE ASSEMBLY	28 AWG	3.5M	2, 4, 6	2, 4, 6
10114976-P040002LF	X4 SAS CABLE ASSEMBLY	28 AWG	4M	2, 4, 6	2, 4, 6
10114976-P050002LF	X4 SAS CABLE ASSEMBLY	28 AWG	5M	2, 4, 6	2, 4, 6
10114976-P060002LF	X4 SAS CABLE ASSEMBLY	28 AWG	6M	2, 4, 6	2, 4, 6
10114976-N040002LF	X4 SAS CABLE ASSEMBLY	26 AWG	4M	2, 4, 6	2, 4, 6
10114976-N050002LF	X4 SAS CABLE ASSEMBLY	26 AWG	5M	2, 4, 6	2, 4, 6
10114976-N060002LF	X4 SAS CABLE ASSEMBLY	26 AWG	6M	2, 4, 6	2, 4, 6
10114976-N070002LF	X4 SAS CABLE ASSEMBLY	26 AWG	7M	2, 4, 6	2, 4, 6
10114976-M060002LF	X4 SAS CABLE ASSEMBLY	24 AWG	6M	2, 4, 6	2, 4, 6
10114976-M070002LF	X4 SAS CABLE ASSEMBLY	24 AWG	7M	2, 4, 6	2, 4, 6
10114976-M080002LF	X4 SAS CABLE ASSEMBLY	24 AWG	8M	2, 4, 6	2, 4, 6
10114976-M090002LF	X4 SAS CABLE ASSEMBLY	24 AWG	9M	2, 4, 6	2, 4, 6
10114976-M100002LF	X4 SAS CABLE ASSEMBLY	24 AWG	10M	2, 4, 6	2, 4, 6

dr Deborah Ingram	20150803	projection	MM	size A3	scale 1:1
eng Tom Feng	20150812			ecn no	ELN-21245-1
chr -	-			rel level	Released
appr Frank Mao	20150812	product family C&A			
		title MiniSAS2.1, Untrained Assy, Plug to Plug		dwg no 10114976	rev C
www.fci.com		cat. no. -		Product - Customer Draw sheet 3 of 6	

Copyright © FCI.

A

B

C

D

A

B

C

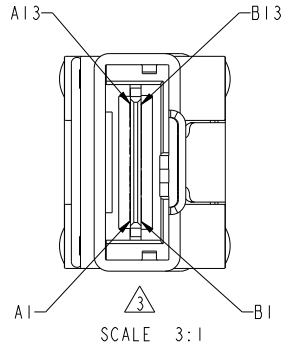
D

A

B

C

D



**WIRING LIST SEE NOTE 7**

GND	A1	---	B1	GND
Rx 0+	A2	←	B2	Tx 0+
Rx 0-	A3	←	B3	Tx 0-
GND	A4	---	B4	GND
Rx 1+	A5	←	B5	Tx 1+
Rx 1-	A6	←	B6	Tx 1-
GND	A7	---	B7	GND
Rx 2+	A8	←	B8	Tx 2+
Rx 2-	A9	←	B9	Tx 2-
GND	A10	---	B10	GND
Rx 3+	A11	←	B11	Tx 3+
Rx 3-	A12	←	B12	Tx 3-
GND	A13	---	B13	GND
GND	B1	---	A1	GND
Tx 0+	B2	→	A2	Rx 0+
Tx 0-	B3	→	A3	Rx 0-
GND	B4	---	A4	GND
Tx 1+	B5	→	A5	Rx 1+
Tx 1-	B6	→	A6	Rx 1-
GND	B7	---	A7	GND
Tx 2+	B8	→	A8	Rx 2+
Tx 2-	B9	→	A9	Rx 2-
GND	B10	---	A10	GND
Tx 3+	B11	→	A11	Rx 3+
Tx 3-	B12	→	A12	Rx 3-
GND	B13	---	A13	GND

A

P2

B

C

D



Copyright FCI.

dr	Deborah Ingram	20150803	projection	MM	size	A3	scale	1:1
eng	Tom Feng	20150812			ecn no	ELN-21245-1		
chr	-	-			rel level	Released		
appr	Frank Mao	20150812	product family	C&A				
		<b>title</b> MiniSAS2.1, Untrained Assy, Plug to Plug		<b>eng no</b> 10114976	<b>rev</b> C			
www.fci.com		cat. no.	Product - Customer Draw		sheet 4 of 6			

NOTES:

- ① - MATERIAL:  
BACKSHELLS: ZINC DIECAST  
PULL TAB: MOLDED THERMOPLASTIC  
LATCH: STAINLESS STEEL  
JET MELT: POLYAMIDE POLYMER
- 2 - ELECTRICAL PERFORMANCE PER CURRENT REVISION  
OF SERIAL ATTACHED SCSI - 2.1 (SAS-2.1) T10/2125-D
- ③ - THIS PRODUCT MEETS THE RESTRICTION OF HAZARDOUS SUBSTANCES IN  
ELECTRICAL AND ELECTRONIC EQUIPMENT (RoHS) DIRECTIVE (2011/65/EU)

4 - PART NUMBER DESCRIPTION

10114976 - X XX XX XX LF

LEAD FREE (SEE NOTE 3 AND 10)

KEY SLOT

01: P1=KEY SLOT 2,4 , P2= KEY SLOT,4,6

02: P1=KEY SLOT 2,4,6, P2= KEY SLOT 2,4,6

LENGTH

XX= METERS, XX=CENTIMETERS

0100 = 01 METERS, 00 CENTIMETERS ("DIM L")

GAUGE

M: 24 AWG

N: 26 AWG

P: 28 AWG

- ⑤ - UNLESS OTHERWISE SPECIFIED ASSEMBLED LENGTH TOLERANCE IS TO BE:  
"DIM L" < 1 METER = ± 25.0mm  
"DIM L" = 1 METER TO 10 METERS = ± 2% OF "DIM L"  
"DIM L" > 10 METERS = +0.00/-4% OF "DIM L"

- ⑥ - UNLESS OTHERWISE SPECIFIED LABEL POSITION IS TO BE 50mm FROM REAR OF CONNECTOR.

LABEL DETAILS:

MANUFACTURER CODE OR NAME

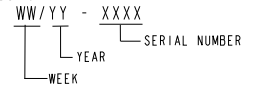
CUSTOMER P/N OR FCI P/N

REVISION

DATE CODE (WW/YY FORMAT) - SERIAL NUMBER

COUNTRY ORIGIN

EXAMPLE SHOWN BELOW:

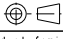




dr	Deborah Ingram	20150803	projection	MM	size	A3	scale	1:1
eng	Tom Feng	20150812			ecp no	ELX-N21245-1		
chr	-	-			rel level	Released		
appr	Frank Mao	20150812	product family	C&A				
			title	MiniSAS2.1, Untrained		dwg no	10114976	
www.fci.com			cat. no.	-	Product - Customer Drw	rev	C	



NOTES CONTINUED:

- ⑦ - ALL CABLE ASSEMBLIES SHALL BE 100% TESTED FOR CONTINUITY AS DEFINED IN WIRING LIST.
- 8 - UNLESS OTHERWISE SPECIFIED ALL CABLE ASSEMBLIES SHALL BE 100% HI-POT TESTED BY APPLYING 300V DC FOR A MINIMUM OF 10ms, UNLESS ACTIVE COMPONENTS ARE USED IN THIS ASSEMBLY.
- 9 - OTHER TESTING PERFORMED AS REQUIRED BY PRODUCT SPECIFICATION: GS-12-548.
- ⑩ - PACKAGING OF LEAD FREE PRODUCTS MEETS LABELING AND PACKAGING PER SPECIFICATION GS-14-920. PACKAGE CABLE ASSEMBLIES PER GS-14-1272.
- ⑪ - THIS DIMENSION IS A FINISHED PRODUCT LENGTH.
- ③ 12. Raw cable is optional, which had been qualified by FCI and meet FCI product spec GS-12-548

dr	Deborah Ingram	20150803	projection	MM	size	A3	scale	1:1
eng	Tom Feng	20150812			ecn no	ELX-N21045-1		
chr	-	-			rel level	Released		
appr	Frank Mao	20150812	product family	C&A				
		<b>title</b> MiniSAS2.1, Untrained Assy, Plug to Plug		<b>eng no</b> 10114976	<b>rev</b> C			
<b>www.fci.com</b>		<b>cat. no.</b> -	<b>Product - Customer Drw</b>		<b>sheet 6 of 6</b>			



Copyright FCI.