

Excellent Integrated System Limited

Stocking Distributor

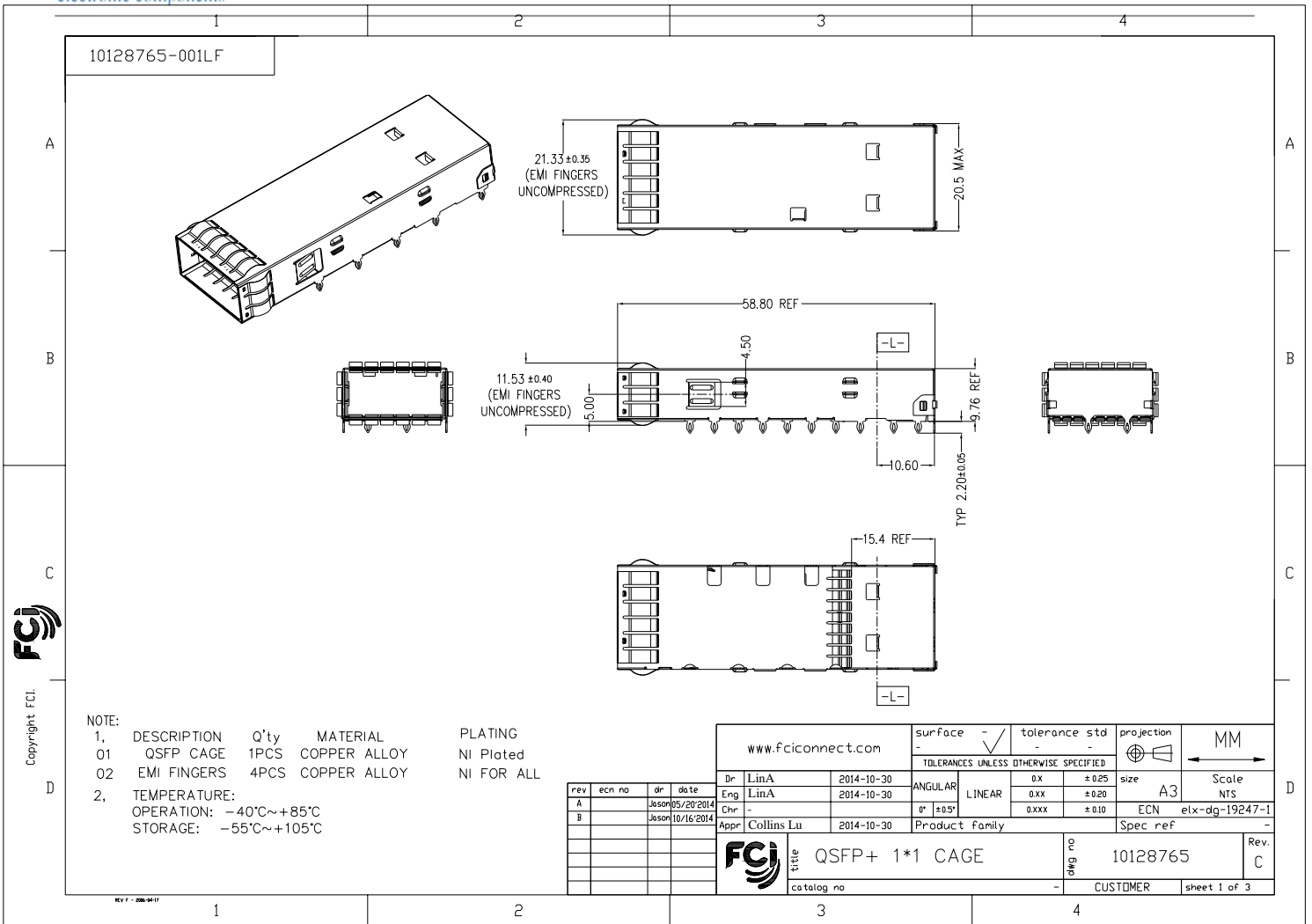
Click to view price, real time Inventory, Delivery & Lifecycle Information:

[FCI](#)

[10128765-001LF](#)

For any questions, you can email us directly:

sales@integrated-circuit.com



NOTE:

1.	DESCRIPTION	Q'ty	MATERIAL	PLATING
01	QSFP CAGE	1PCS	COPPER ALLOY	NI Plated
02	EMI FINGERS	4PCS	COPPER ALLOY	NI FOR ALL

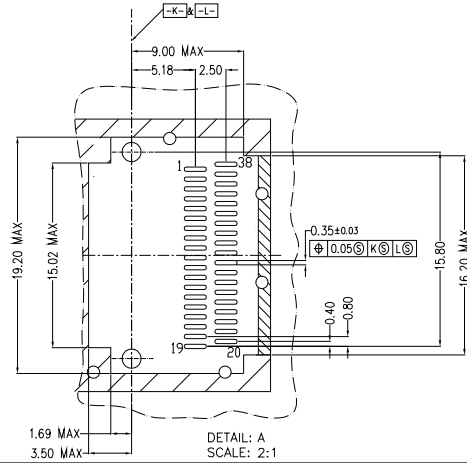
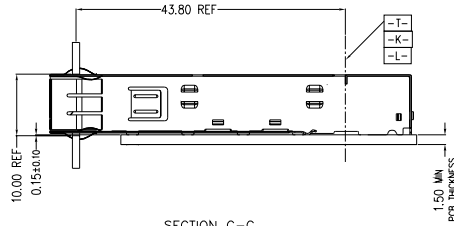
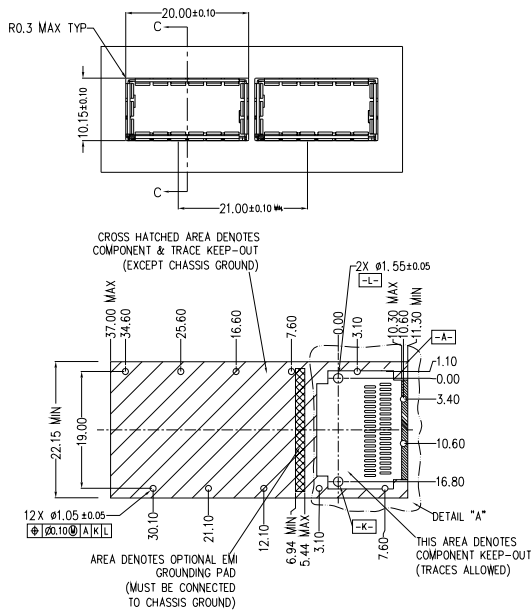
2. TEMPERATURE:
OPERATION: -40°C~+85°C
STORAGE: -55°C~+105°C

Copyright FCI

www.fciconnect.com		surface	-	tolerance std	-	projection	MM
		TOLERANCES UNLESS OTHERWISE SPECIFIED				←	
Dr	LinA	2014-10-30	ANGULAR	0.X	±0.25	size	A3
Eng	LinA	2014-10-30	LINEAR	0.XX	±0.20	Scale	NTS
Chr	-	-	0° ±0.5°	0.XXX	±0.10	ECN	elx-dg-19247-1
Appr	Collins Lu	2014-10-30	Product family			Spec ref	-
FCI		title	QSFP+ 1*1 CAGE		dwg no	10128765	Rev. C
		catalog no			CUSTOMER	sheet 1 of 3	

REV 1 - 2014-10-30

PCB LAYOUT FOR SINGLE SIDED APPLICATION



- NOTES:
1. SEE QSFP MSA SPECIFICATION FOR BEZEL LOCATION TOLERANCE
 2. DATUM -A- IS TIP SURFACE OF HOST BOARD PER MSA
 3. FINISHED HOLE SIZE (AFTER PLATING)
 4. DATUM -K- IS HOST BOARD THREE HOLE #1 TO ACCEPT CONNECTOR GUIDE POST PER MSA
 5. DATUM -L- IS HOST BOARD THREE HOLE #2 TO ACCEPT CONNECTOR GUIDE POST PER MSA
 6. DATUM -T- IS HARD STOP ON CAGE PER MSA

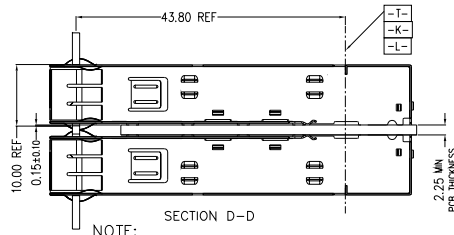
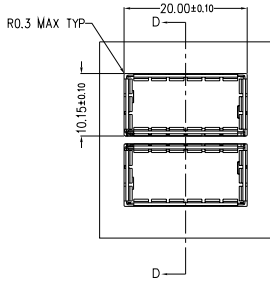
www.fciconnect.com		surface	-	tolerance std	-	projection	MM
		TOLERANCES UNLESS OTHERWISE SPECIFIED				←	
Dr	LinA	2014-10-30	ANGULAR	LINEAR	0.X	±0.25	size A3 Scale NTS
Eng	LinA	2014-10-30			0.XX	±0.20	
Chr	-		Ø ±0.05		0.XXX	±0.10	ECN elx-dg-19247-1
Appr	Collins Lu	2014-10-30	Product family		Spec ref		-
FCJ	title	QSFP+ 1*1 CAGE		dwg no	10128765		Rev. C
	catalog no			CUSTOMER	sheet 2 of 3		



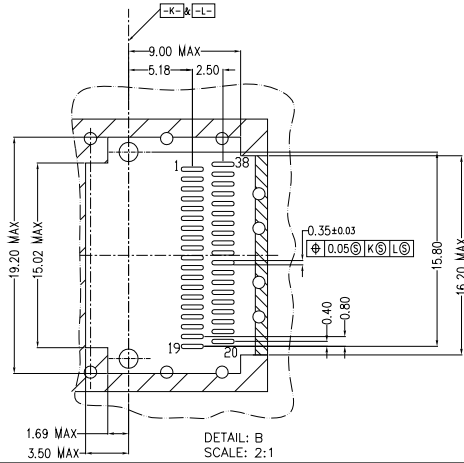
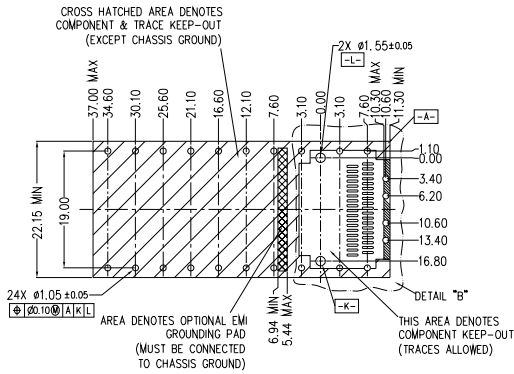
Copyright FCI

REV 1 - 2014-10-30

PCB LAYOUT FOR BELLY TO BELLY APPLICATION



NOTE:
BEZEL CUTOUT LOCATIONS FOR BELLY TO BELLY APPLICATIONS ARE DEPENDENT ON PCB THICKNESS



NOTES:

1. SEE QSFP MSA SPECIFICATION FOR BEZEL LOCATION TOLERANCE
2. DATUM -A- IS TIP SURFACE OF HOST BOARD PER MSA
3. FINISHED HOLE SIZE (AFTER PLATING)
4. DATUM -K- IS HOST BOARD THRE HOLE #1 TO ACCEPT CONNECTOR GUIDE POST PER MSA
5. DATUM -L- IS HOST BOARD THRE HOLE #2 TO ACCEPT CONNECTOR GUIDE POST PER MSA
6. DATUM -T- IS HARD STOP ON CAGE PER MSA

www.fciconnect.com		surface	-	tolerance std	-	projection	MM
		TOLERANCES UNLESS OTHERWISE SPECIFIED			←		
Dr	LinA	2014-10-30	ANGULAR	LINEAR	0.X	±0.25	size A3 Scale NTS
Eng	LinA	2014-10-30			0.XX	±0.20	
Chr	-		0° ±0.5°		0.XXX	±0.10	ECN elx-dg-19247-1
Appr	Collins Lu	2014-10-30	Product family		Spec ref -		
FCI		title QSFP+ 1*1 CAGE		part no 10128765		Rev. C	
		catalog no		CUSTOMER		sheet 3 of 3	

REV 1 - 2014-10-30