

Excellent Integrated System Limited

Stocking Distributor

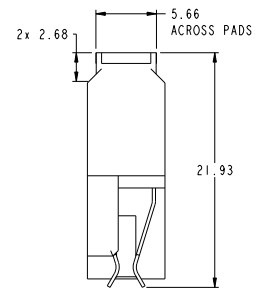
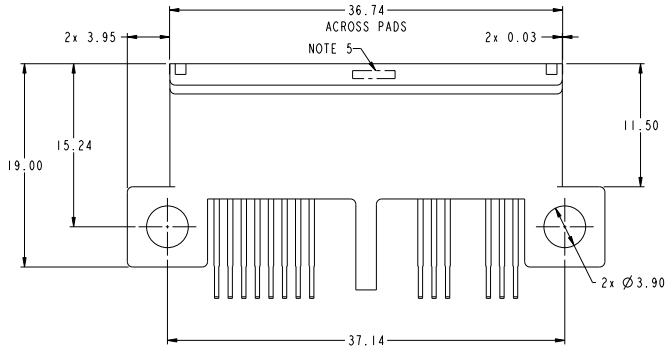
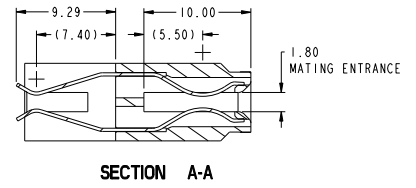
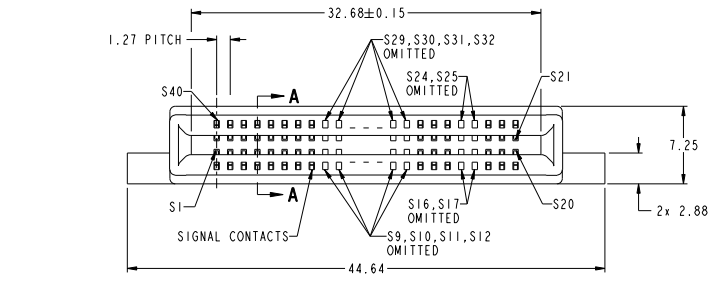
Click to view price, real time Inventory, Delivery & Lifecycle Information:

[FCI](#)

[10129515-001LF](#)

For any questions, you can email us directly:

sales@integrated-circuit.com



Copyright FCI

spec. ref.	-	dr.	Jackie Huang	2014-03-21	projection	MM	size	A2	scale	4:1
reference std	ISO 406 ISO 1101	eng	Jackie Huang	2014-03-21		HPCE	rel. level	Released	rev	A
TOLERANCES UNLESS OTHERWISE SPECIFIED		cht	FANCY ZHANG	2014-03-21						
surface	linear	0.X	±0.5		SMT ENHANCED WALLS					
	angular	0.XX	±0.25		40S (12S OMITTED) SPECIAL					
		0.XXX	±0.10		www.fci.com (url. no.)					
ISO 1302		0°	±2°	Product - Customer Draw		sheet 1 of 4				

PDS: Rev: A

STATUS: Released

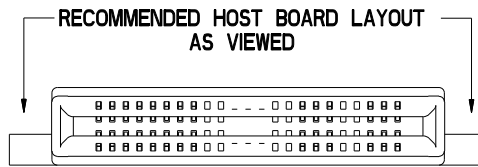
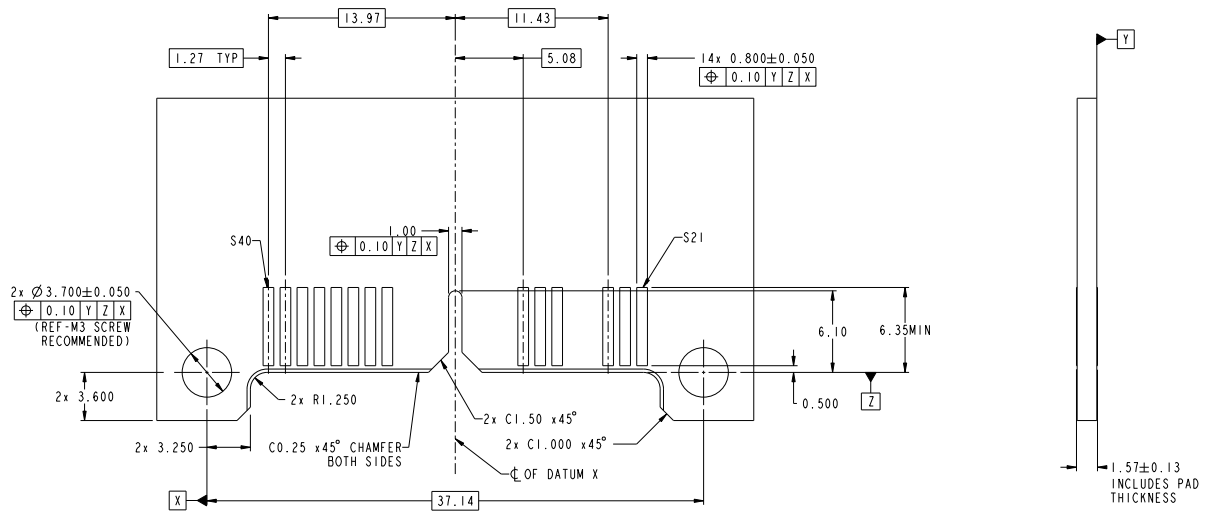
Printed: May 15, 2014

2

3

4

5



dr	Jackie Huang	2014-03-21	projection	MM	size	A2	scale	
eng	Jackie Huang	2014-03-21			acc no			
cht	FANCY ZHANG	2014-03-21			rel level	Released		
appr	PM ZHENG	2014-03-21	product family	HPCE				
			SMT ENHANCED WALLS		part no	10129515	rev	A
www.fci.com			40S (12S OMITTED) SPECIAL		Product - Customer Draw		sheet 2 of 4	

PDS: Rev: A

STATUS: Released

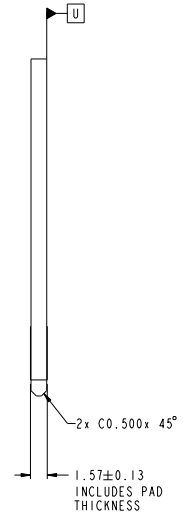
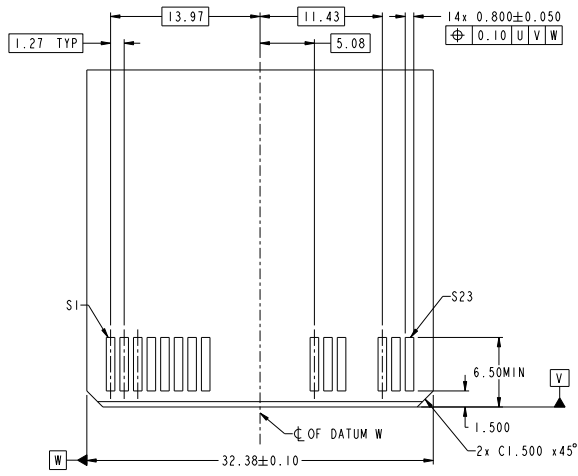
Printed: May 15, 2014

2

3

4

5

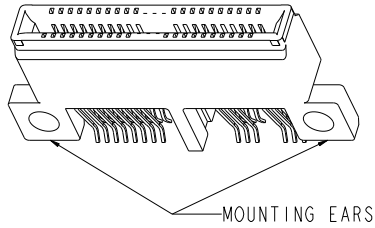


**RECOMMENDED MATING BOARD
FOOTPRINT**

dr	Jockie Huang	2014-03-21	projection	MM	size	A2	scale	
eng	Jockie Huang	2014-03-21			acc no			
cht	FANCY ZHANG	2014-03-21			rel level	Released		
appr	PM ZHENG	2014-03-21	product family	HPCE				
SMT ENHANCED WALLS 40S (12S OMITTED) SPECIAL			www.fci.com	part no.	10129515	rev	A	
PDS: Rev: A			STATUS: Released			Printed: May 15, 2014		

Copyright FCI

PART NUMBER	MOUNTING EARS
10129515-001LF	YES
10129515-002LF	NO



Example: 10129515-001LF

NOTES:

- CONNECTOR MATERIALS:
 HOUSING: HIGH TEMPERATURE THERMAL PLASTIC, BLACK
 UL 94V-0 COMPLIANT
 CONTACTS: HIGH PERFORMANCE COPPER ALLOY.
- CONTACT FINISH REF. GS-12-604 SECTION 5.2.
- PRODUCT SPECIFICATION: GS-12-604.
- APPLICATION SPECIFICATION: GS-20-128.
- PRODUCT MARKING (FCI - PART NUMBER & DATE CODE) ON HOUSING IN AREA SHOWN.
- PACKAGING MEETS FCI SPECIFICATION GS-14-937.
- HOUSING COMPONENT WILL WITHSTAND EXPOSURE TO 260°C PEAK TEMPERATURE FOR 60 SECONDS IN A CONVECTION, INFRA-RED, OR VAPOR PHASE REFLOW OVEN.

dr	Jackie Huang	2014-03-21	projection	MM	size	A2	scale	
eng	Jackie Huang	2014-03-21			acc no			
cht	FANCY ZHANG	2014-03-21			rel level	Released		
appr	PM ZHENG	2014-03-21	product family	HPCE				
			SMT ENHANCED WALLS		part no	10129515	rev	A
www.fci.com			40S (12S OMITTED) SPECIAL		Product - Customer Draw			sheet 4 of 4

PDS: Rev: A

STATUS: Released

Printed: May 15, 2014

Copyright FCI.