

## Excellent Integrated System Limited

Stocking Distributor

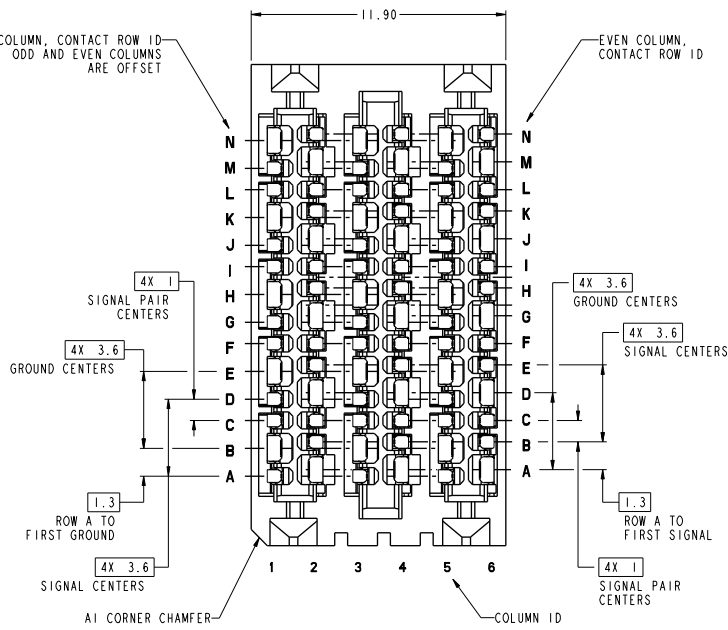
Click to view price, real time Inventory, Delivery & Lifecycle Information:

[FCI](#)  
[10127896-101LF](#)

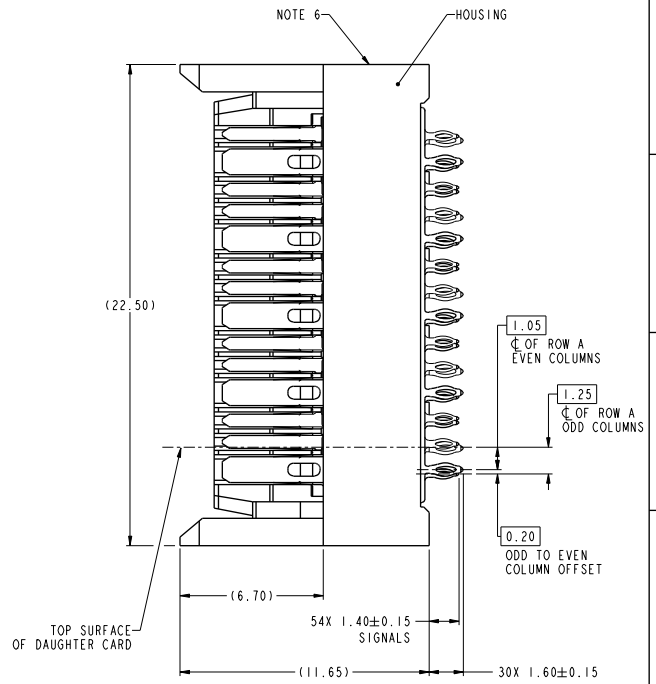
For any questions, you can email us directly:  
[sales@integrated-circuit.com](mailto:sales@integrated-circuit.com)

PRODUCT NUMBER  
SEE SHEET 16

Amphenol FCI



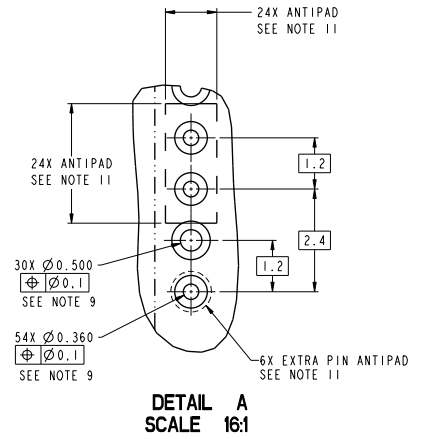
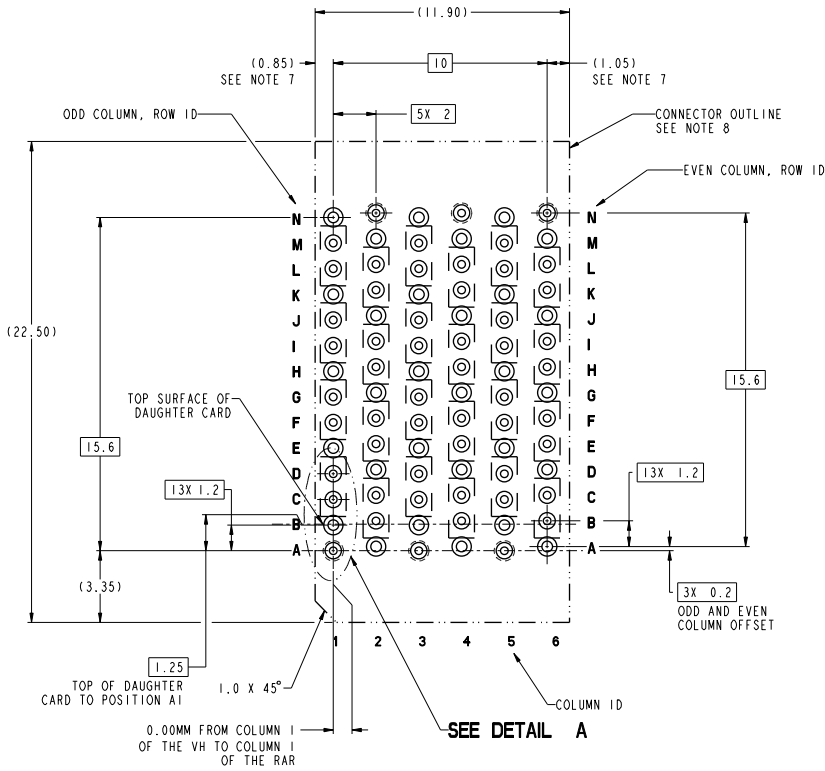
10127896-101LF  
(10127896-101LF STANDARD MATE COI...)



Preliminary

spec. ref.	SEE NOTES	dr	MILL L10	2014-02-10	projection	MM	size	A2
tolerance std	TOLERANCES UNLESS OTHERWISE SPECIFIED	exp	MILL L10	2014-02-10	product family	ExoMAX	ecc. no.	4
ISO 406		chr	MILL L10	2014-02-10	rel. level			
ISO 1101		appr						
surface	linear	0.X	±.3	Amphenol FCI	ExoMAX VERTICAL HEADER ASSY		10127896	rev
		0.XX	±.10		4 PR., 84 POS., 6 IMLA			4
	angular	0.XXX	±.050		SEE TABLE	Product	Customer Draw	sheet 1 of 11

For information only. This is a preliminary customer document that is subject to change without notice.



Heaven Cen 2013/11/12  
Peng-Bing Fu 2016/04/06

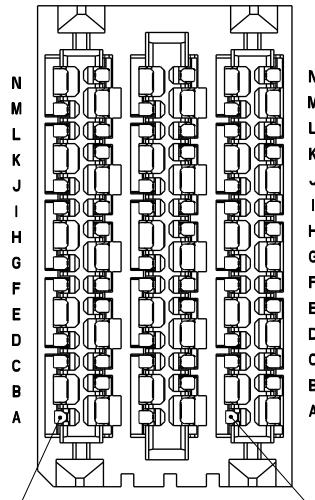
RECOMMENDABLE COMPONENT SIZE  
10127896-101LF  
SEE NOTES 7, 8, 9, & 11

Preliminary

spec. ref.	SEE NOTES	dr	MILL L10	2014-02-10	projection	MM	size	A2
tolerance std	TOLERANCES UNLESS OTHERWISE SPECIFIED	eng	MILL L10	2014-02-10	product family	ExoMAX	rel. level	4
ISO 406		chr	MILL L10	2014-02-10				
ISO 1101		appr						
surface	linear	0.X	±.3	Amphenol FCI	ExoMAX VERTICAL HEADER ASSY	10127896	rev	4
ISO 1302	angular	0.XX	±.10		4 PR., 84 POS., 6 IMLA			
		0.XXX	±.050		SEE TABLE	Product	Customer Draw	sheet 2 of 11

For information only. This is a preliminary customer document that is subject to change without notice.

© 2018 Amphenol FCI



ADVANCED MATE POSITION A1 SEE NOTE 13  
ADVANCED MATE POSITION A5 SEE NOTE 13

**10127896-201LF**  
**ADVANCED MATE CONNECTOR**  
**ADVANCED MATE POSITIONS ARE POSITIONS A1 AND A5 ONLY**  
Heaven Cen 2013/11/12  
Peng-Bing Fu 2016/04/06

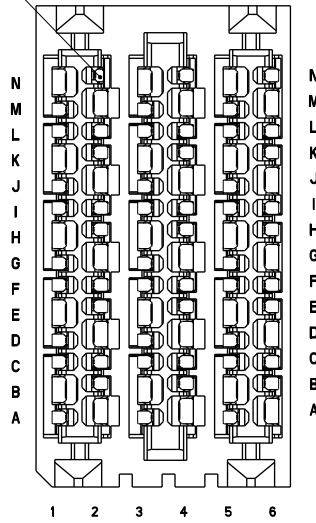
Preliminary

spec. ref.	SEE NOTES	dr	MILL L10	2014-02-10	projection	MM	size	A2
tolerance std	TOLERANCES UNLESS OTHERWISE SPECIFIED	eng	MILL L10	2014-02-10	product family	ExoMAX	acc. no.	4
ISO 406		chr	MILL L10	2014-02-10	rel. level			
ISO 1101		appr						
surface	linear	0.X	±.3					
		0.XX	±.10					
		0.XXX	±.050					
ISO 1302	angular	°	±					
		<b>Amphenol FCI</b>		ExoMAX VERTICAL HEADER ASSY		10127896		rev
				4 PR., 84 POS., 6 IMLA				4
				SEE TABLE		Product - Customer Draw		sheet 3 of 11

For information only. This is a preliminary customer document that is subject to change without notice.

Amphenol FCI  
© 2018 AFCE

SHORT DETECT  
POSITION N2  
SEE NOTE 14



10127896-301LF  
SHORT DETECT CONNECTOR  
SHORT DETECT POSITION IS N2 ONLY  
SHEETS 1 & 2

Heaven Cen 2013/11/12  
Peng-Bing Fu 2016/04/06

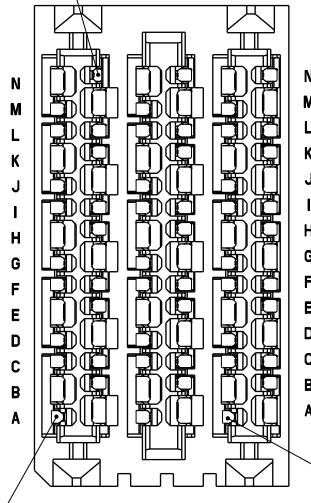
Preliminary

spec. ref.	SEE NOTES	dr	MILL L10	2014-02-10	projection	MM	size	A2	
tolerance: s14	TOLERANCES UNLESS OTHERWISE SPECIFIED	axg	MILL L10	2014-02-10	rel. level	4	acc. no.		
ISO 406		chr	MILL L10	2014-02-10	product family	ExoMAX	rel. level		
ISO 1101		appr							
surface	linear	0.X	±.3	0.XX	±.10	0.XXX	±.050	angular	°
ISO 1302	angular	°	°						
		<b>Amphenol FCI</b>		ExoMAX VERTICAL HEADER ASSY		10127896		rev	4
				4 PR., 84 POS., 6 IMLA		SEE TABLE		Product Customer Draw sheet 4 of 11	

For information only. This is a preliminary customer document that is subject to change without notice.

© 2018 Amphenol FCI

SHORT DETECT  
POSITION N2  
SEE NOTE 15



ADVANCED MATE  
POSITION A1  
SEE NOTE 15

ADVANCED MATE  
POSITION A5  
SEE NOTE 15

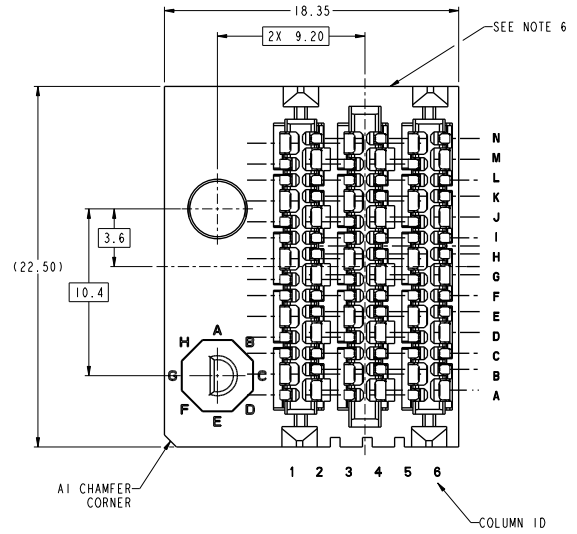
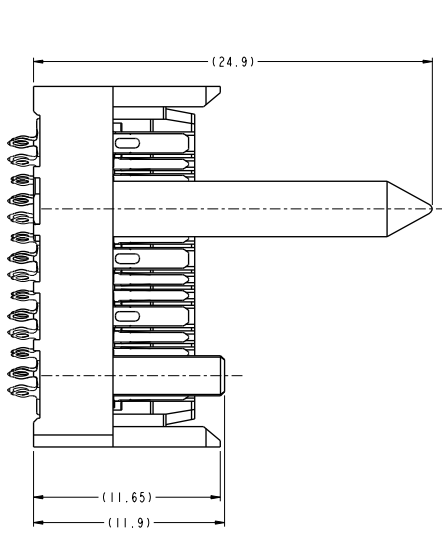
**10127896-401LF**  
ADVANCED MATE/SHORT DETECT CONNECTOR  
ADVANCED MATE POSITIONS ARE POSITIONS A1 AND A5 ONLY  
2 ONLY  
Heaven Cen 2013/11/12  
Peng-Bing Fu 2016/04/06 SHEETS 1 & 2

Preliminary

spec. ref.	SEE NOTES	dr	MILL L10	2014-02-10	projection	MM	size	A2
tolerance std	TOLERANCES UNLESS OTHERWISE SPECIFIED	axg	MILL L10	2014-02-10				
ISO 406 ISO 1101		chr	MILL L10	2014-02-10				
ISO 1302		appr			product family	ExoMAX	rel. level	
surface	linear	0.X	±.3		ExoMAX VERTICAL HEADER ASSY			10127896
		0.XX	±.10		4 PR., 84 POS., 6 IMLA			rev 4
	angular	0.XXX	±.050		cat. no.	SEE TABLE	Product	Customer Draw
								sheet 5 of 11

For information only. This is a preliminary customer document that is subject to change without notice.

Amphenol FCI  
© 2018 AFCE



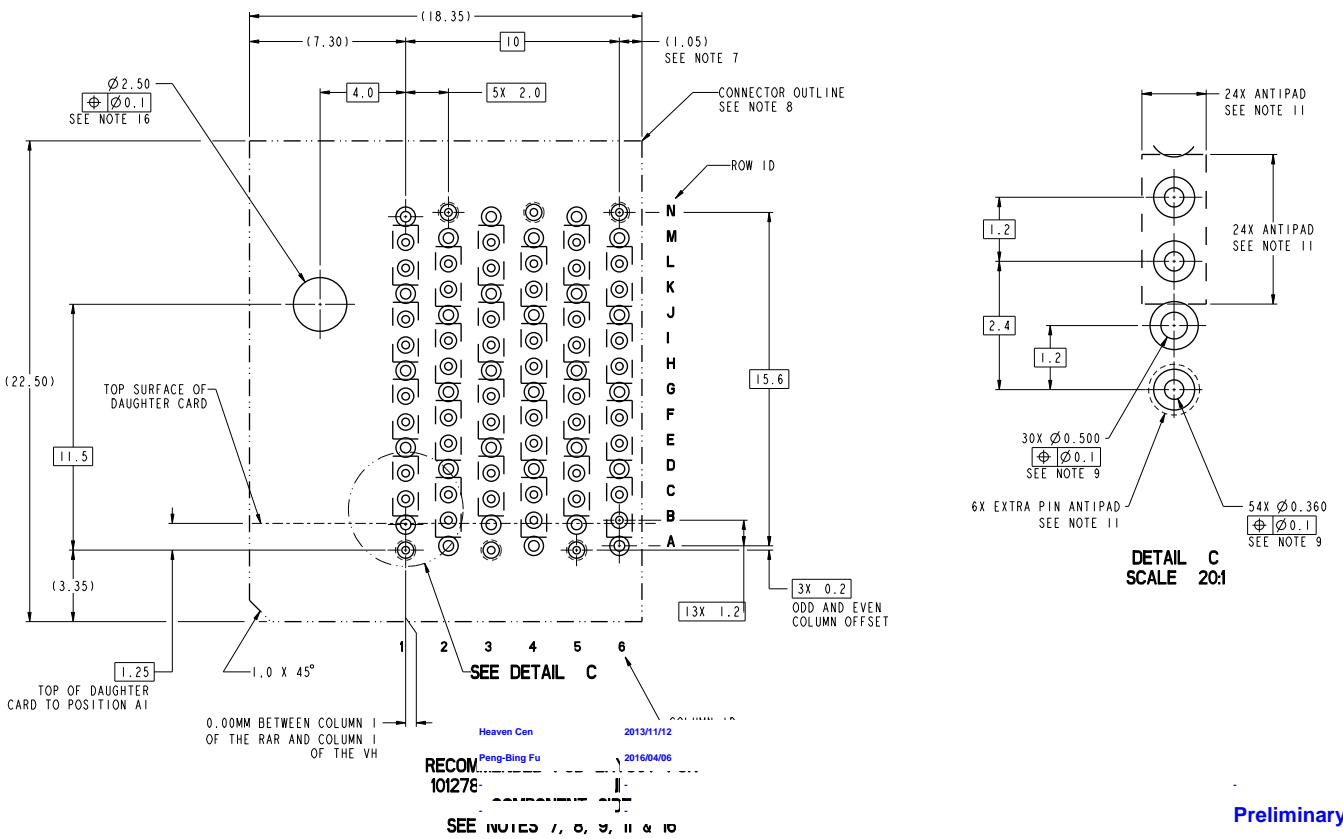
10127896-101LF THRU -YJLF  
 Heaven Cen 2013/11/12 (SEE NOTE 17)  
 Peng-Bing Fu 2016/04/06 SEE SHEET 1

Preliminary

spec. ref.	SEE NOTES	dr	MILL L10	2014-02-10	projection	MM	size	A2
tolerance std	TOLERANCES UNLESS OTHERWISE SPECIFIED	eng	MILL L10	2014-02-10	product family	ExoMAX	rel. level	4
ISO 406		chr	MILL L10	2014-02-10				
ISO 1101		appr						
surface	linear	0.X	±.3	Amphenol FCI	ExoMAX VERTICAL HEADER ASSY			10127896
		0.XX	±.10		4 PR., 84 POS., 6 IMLA			4
		0.XXX	±.050					
ISO 1302	angular	°	±	cat. no.	SEE TABLE	Product	Customer Draw	sheet 6 of 11

For information only. This is a preliminary customer document that is subject to change without notice.

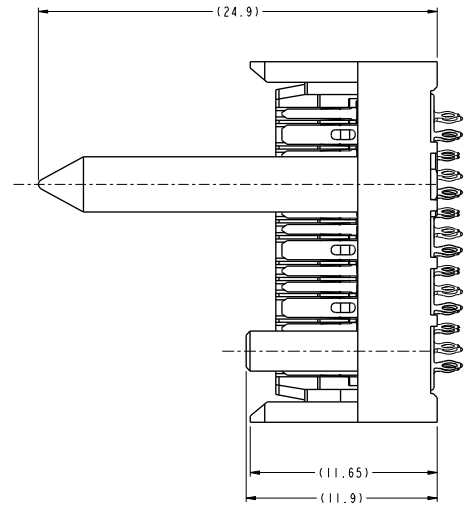
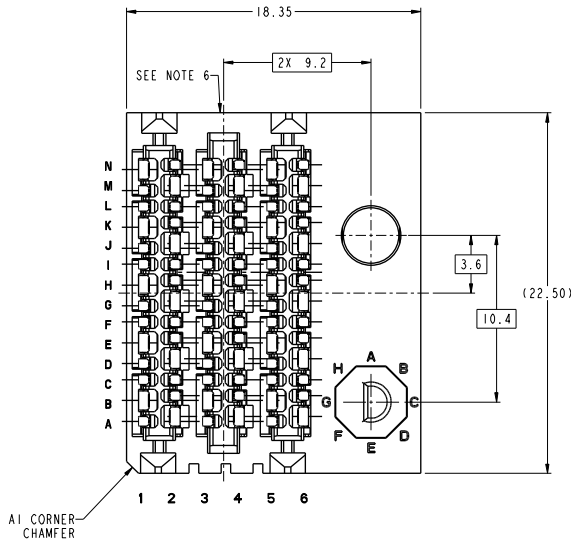
© 2018 Amphenol FCI



For information only. This is a preliminary customer document that is subject to change without notice.

spec. ref.	SEE NOTES	dr	MILL L10	2014-02-10	projection	MM	size	A2
tolerance std	TOLERANCES UNLESS OTHERWISE SPECIFIED	eng	MILL L10	2014-02-10	product family	ExoMAX	rel. level	4
ISO 406		chr	MILL L10	2014-02-10	product	ExoMAX	rel. level	4
ISO 1101		appr						
surface	linear	0.X	±.3	Amphenol FCI	ExoMAX VERTICAL HEADER ASSY		10127896	rev
		0.XX	±.10		4 PR., 84 POS., 6 IMLA			4
ISO 1302	angular	0.XX	±.050	cat. no.	SEE TABLE	Product	Customer Draw	sheet 7 of 11





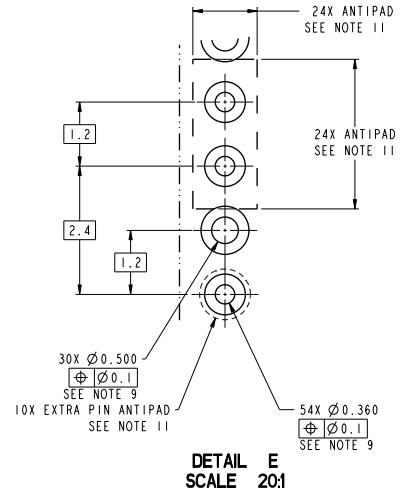
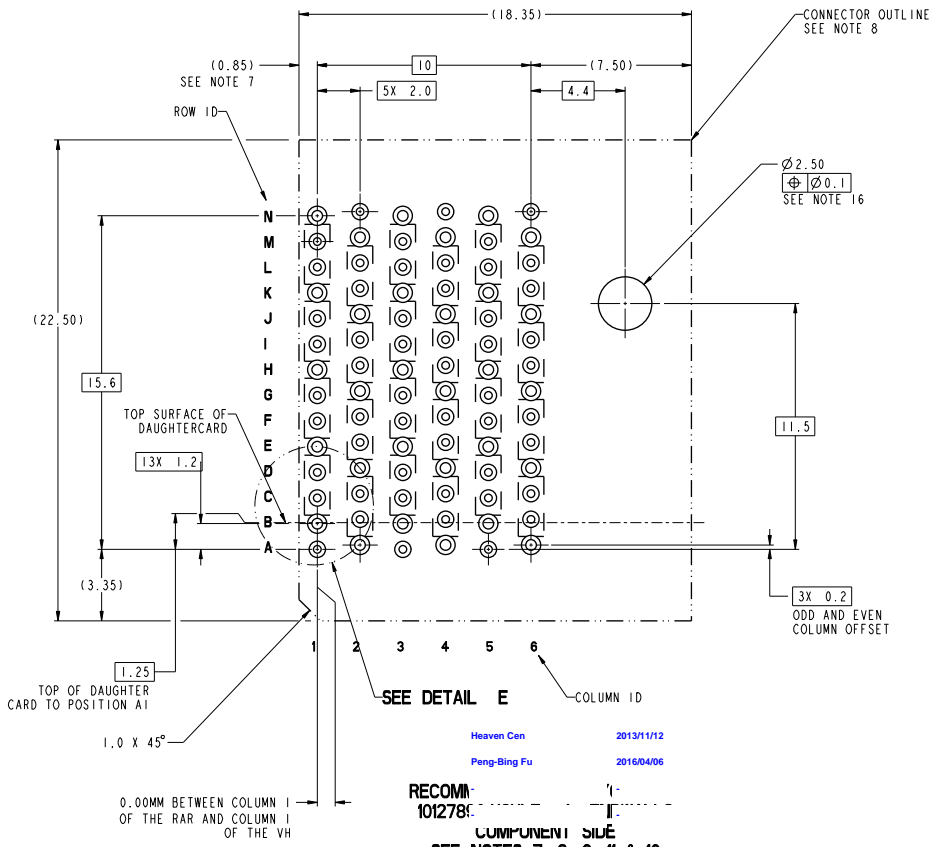
Heaven Cen 2013/11/12  
Peng-Bing Fu 2016/04/06  
SEE NOTE 17)  
E SHEET 1

Preliminary

For information only. This is a preliminary customer document that is subject to change without notice.

spec. ref.	SEE NOTES	dr	MILL L10	2014-02-10	projection	MM	size	A2
tolerance std	TOLERANCES UNLESS OTHERWISE SPECIFIED	eng	MILL L10	2014-02-10	product family	ExoMAX	rel. level	4
ISO 406		chr	MILL L10	2014-02-10				
ISO 1101		appr						
surface	linear	0.X	±.3	Amphenol FCI	ExoMAX VERTICAL HEADER ASSY			10127896
		0.XX	±.10		4 PR., 84 POS., 6 IMLA			4
ISO 1302	angular	0.XXX	±.050		cat. no.	SEE TABLE	Product	Customer Draw
		°	±					sheet 8 of 11

© 2018 Amphenol FCI



RECOMMENDATION  
10127896-101LF  
COMPONENT SIDE  
SEE NOTES 7, 8, 9, 11 & 16

Heaven Cen 2013/11/12  
Peng-Bing Fu 2016/04/06





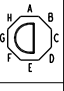
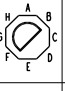
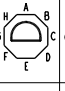
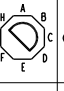
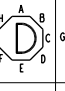
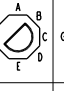
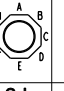



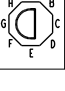
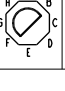
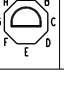
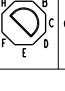
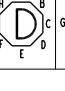
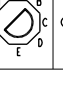

Preliminary

spec. ref.	SEE NOTES	dr	MILL L10	2014-02-10	projection	MM	size	A2
tolerance std	TOLERANCES UNLESS OTHERWISE SPECIFIED	eng	MILL L10	2014-02-10	product family	ExoMAX	ecc. no.	4
ISO 406		chr	MILL L10	2014-02-10	rel. level			
ISO 1101		appr						
surface	linear	0.X	±.3	Amphenol FCI	ExoMAX VERTICAL HEADER ASSY			10127896
		0.XX	±.10		4 PR., 84 POS., 6 IMLA			4
ISO 1302	angular	0.XX	±.050		cat. no.	SEE TABLE	Product	Customer Draw
		°	±					sheet 9 of 11

For information only. This is a preliminary customer document that is subject to change without notice.

Amphenol FCI  
© 2018 Amphenol FCI

10127896 - Y Y Y L F

MODULE DESCRIPTION	DESIGNATION REPRESENTED IN DASH NUMBER								BASE MODULE	
STANDARD NO GUIDANCE (SEE SHEET 1)	01									
RIGHT GUIDANCE MODULE (SEE SHEET 6)	1A	1B	1C	1D	1E	1F	1G	1H	1J (NO KEY)	
										
LEFT GUIDANCE MODULE (SEE SHEET 8)	2A	2B	2C	2D	2E	2F	2G	2H	2J (NO KEY)	
										

ASSEMBLY PART NUMBER	DESCRIPTION
10127896-1YLF	STANDARD MATE
10127896-2YLF	ADVANCED MATE
10127896-3YLF	SHORT DETECT
10127896-4YLF	ADVANCED MATE & SHORT DETECT

Heaven Cen 2013/11/12  
Peng-Bing Fu 2016/04/06

Preliminary

spec. ref.	SEE NOTES	dr	MILL L10	2014-02-10	projection	MM	size	A2
tolerance std	TOLERANCES UNLESS OTHERWISE SPECIFIED	exp	MILL L10	2014-02-10	product family	ExoMAX	rel. level	4
ISO 406		chr	MILL L10	2014-02-10				
ISO 1101		appr						
surface	linear	0.X	±.3					
		0.XX	±.10					
		0.XXX	±.050					
ISO 1302	angular	°	±					
FCI		ExoMAX VERTICAL HEADER ASSY		4 PR., 84 POS., 6 IMLA		10127896		rev 4
ISO 1302		SEE TABLE		Product		Customer Draw		sheet 10 of 11

For information only. This is a preliminary customer document that is subject to change without notice.

© 2018 FCI

NOTES

- 1- CONNECTOR MATERIALS:  
 HOUSING: HIGH TEMP THERMOPLASTIC, BLACK, UL94-V0  
 IMLA PLASTIC: HIGH TEMP THERMOPLASTIC, BLACK, UL94-V0  
 CONTACT: COPPER ALLOY;  
 GUIDE PIN AND POLARIZING PIN: ZINC ALLOY
- 2- CONTACT PLATING:  
 SEPARABLE INTERFACE:  
 PERFORMANCE-BASED PLATING, QUALIFIED TO MEET THE  
 REQUIREMENTS OF FCI PRODUCT SPECIFICATION GS-12-1096  
 INCLUDING TELCORDIA GR-1217-CORE (NOVEMBER 1995)  
 CENTRAL OFFICE TEST SEQUENCE  
 PRESS-FIT TAILS: TIN OVER NICKEL (LEAD FREE)
- 3- PRODUCT SPECIFICATION: GS-12-1096
- 4- APPLICATION SPECIFICATION: GS-20-0361
- 5- PACKAGING MEETS GS-14-920 LEAD FREE LABELING SPECIFICATION.
- 6- PRODUCT MARKING, (PART NUMBER & LOT CODE), ON THIS SURFACE.
- 7- THE MINIMUM VIA SPACING BETWEEN STACKED CONNECTORS WILL BE 2.0 mm  
 OR 3.0 mm AS DEFINED BY NOTE 7 ON THE MATING RECEPTACLE CUSTOMER  
 DRAWING. REFER TO THE APPLICATION SPECIFICATION FOR DETAILS.
- 8- CONNECTOR OUTLINE MAY BE SCREEN-PRINTED ONTO CUSTOMER PCB TO  
 BE USED AS A GUIDE FOR MANUAL CONNECTOR PLACEMENT.
- 9- REFER TO CUSTOMER DRAWING 10119933 FOR INFORMATION  
 ON PCB HOLE DIAMETERS AND PLATING OPTIONS
- 10- THIS PRODUCT MEETS THE EUROPEAN UNION DIRECTIVES &  
 OTHER COUNTRY REGULATIONS AS DESCRIBED IN GS-47-0004
- 11- REFER TO THE APPLICATION SPECIFICATION FOR TRACE ROUTING  
 EXAMPLES THAT INCLUDE DIMENSIONS FOR ANTI-PADS, TRACE WIDTHS,  
 TRACE SPACING, ETC.
- 12- THE HOUSING WILL WITHSTAND EXPOSURE TO 260°C FOR 10-30 SECONDS  
 IN A CONVECTION, INFRA-RED, OR VAPOR PHASE REFLOW OVEN.
- 13- THE ADVANCED MATE HEADER, 10127896-2YLLF, WHEN MATED  
 WITH AN ADVANCED MATE RECEPTACLE, WILL PROVIDE 2 PAIRS OF MATING  
 CONTACTS THAT MATE 0.75MM BEFORE THE REMAINDER OF THE SIGNAL AND  
 GROUND CONTACTS.
- 14- THE SHORT DETECT HEADER, 10127896-3YLLF, WHEN MATED  
 WITH A STANDARD MATE RECEPTACLE, WILL PROVIDE 1 PAIR OF MATING  
 CONTACTS THAT MATE 1.00MM AFTER THE REMAINDER OF THE SIGNAL  
 AND GROUND CONTACTS.
- 15- THE ADVANCED MATE/SHORT DETECT HEADER, 10127896-4YLLF, WHEN MATED  
 WITH AN ADVANCED MATE RECEPTACLE, WILL PROVIDE 2 PAIRS OF MATING CONTACTS THAT  
 MATE 0.75MM BEFORE THE REMAINDER OF THE SIGNAL AND GROUND CONTACTS  
 OF MATING CONTACTS THAT MATE 1.00MM AFTER THE REMAINDER OF THE SIG  
 Heaven Cen 2013/11/12
- 16- FOR CONNECTORS WITH EITHER A RIGHT OR LEFT GUIDE MODULE, ONE PHILL  
 SCREW MUST BE USED TO SECURE GUIDE PIN/CONNECTOR TO THE PCB. THE S  
 2.0 - 6.0mm PLUS THE THICKNESS OF THE BOARD. SCREW IS NOT PROVIDED  
 Peng-Bing Fu 2016/04/06
- 17- LEFT / RIGHT INTEGRATED GUIDE ORIENTATION IS DETERMINED BY THE LOC  
 FEATURES WHEN LOOKING AT THE MATING FACE OF THE RIGHT ANGEL RECEPTACLE. THE LEFT / RIGHT  
 DESIGNATION OF THE MATING HEADER IS DEFINED BY THE RIGHT ANGEL RECEPTACLE THAT IT MATES  
 WITH ( i. e. A RIGHT GUIDE VERTICAL HEADER MATES A RIGHT GUIDE RIGHT ANGEL RECEPTACLE. )
- 18- ALL GROUND CONTACTS WITHIN A COLUMN ARE COMMONED.

Preliminary

spec. ref.	SEE NOTES	dr	MILL L10	2014-02-10	projection	MM	size	A2
tolerance std	TOLERANCES UNLESS OTHERWISE SPECIFIED	eng	MILL L10	2014-02-10	product family	ExoMAX	rel. level	4
ISO 406		chr	MILL L10	2014-02-10				
ISO 1101		appr						
surface	linear	0.X	±.3	Amphenol FCI	ExoMAX VERTICAL HEADER ASSY		10127896	rev
		0.XX	±.10		4 PR., 84 POS., 6 IMLA			4
		0.XXX	±.050					
ISO 1302	angular	°	±	cat. no.	SEE TABLE	Product	Customer Draw	sheet 11 of 11

For information only. This is a preliminary customer document that is subject to change without notice.

© 2016 Amphenol FCI