

## Excellent Integrated System Limited

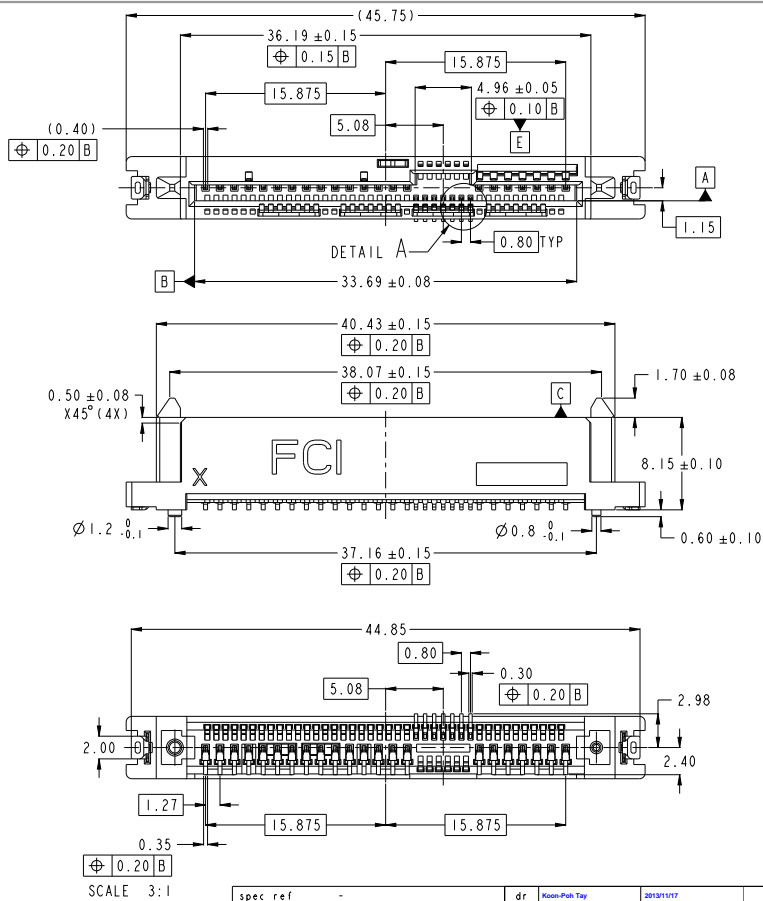
Stocking Distributor

Click to view price, real time Inventory, Delivery & Lifecycle Information:

[FCI](#)  
[10127070-001C-TRLF](#)

For any questions, you can email us directly:  
[sales@integrated-circuit.com](mailto:sales@integrated-circuit.com)

PRODUCT No.  
SEE TABLE

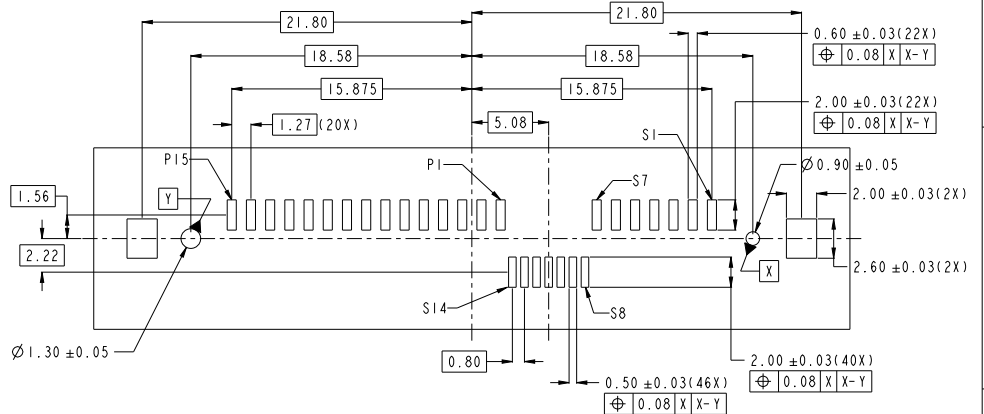


SECTION Z-Z  
(BETWEEN HIGHEST AND LOWEST LEAD)

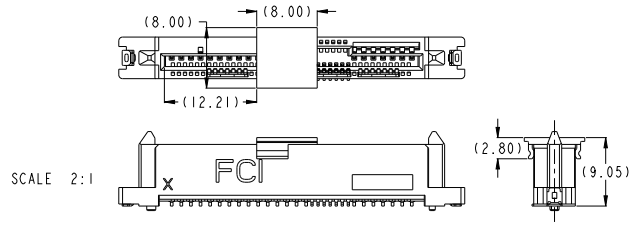
Copyright FCI

spec ref	-	dr	Koon-Pak Toy	20121017	projection	MM	size	A3	scale	1:1																					
tolerance std	-	eng	Koon-Pak Toy	20121017			ecn no	-	rel level	Released																					
	TOLERANCES UNLESS OTHERWISE SPECIFIED	chr	-	-			product family	-																							
surface	<table border="1"> <tr> <td>linear</td> <td>0.X</td> <td>±0.30</td> </tr> <tr> <td></td> <td>0.XX</td> <td>±0.20</td> </tr> <tr> <td></td> <td>0.XXX</td> <td>±-</td> </tr> <tr> <td>angular</td> <td>0°</td> <td>±2°</td> </tr> </table>	linear	0.X	±0.30		0.XX	±0.20		0.XXX	±-	angular	0°	±2°	appr	Chen-Hong Tan	20131117			<table border="1"> <tr> <td>title</td> <td>SAS RECEPTACLE</td> <td>eng no</td> <td>10127070</td> <td>rev</td> <td>A</td> </tr> <tr> <td></td> <td>VERTICAL SMT</td> <td>cat. no.</td> <td>-</td> <td></td> <td></td> </tr> </table>	title	SAS RECEPTACLE	eng no	10127070	rev	A		VERTICAL SMT	cat. no.	-		
linear	0.X	±0.30																													
	0.XX	±0.20																													
	0.XXX	±-																													
angular	0°	±2°																													
title	SAS RECEPTACLE	eng no	10127070	rev	A																										
	VERTICAL SMT	cat. no.	-																												

PRODUCT No.	PLATING	PICK UP CAP	PACKAGING	REMARKS
10127070-001LF	NOTE 2	NO	TRAY	NOTE 5
10127070-001CLF		YES		
10127070-001TRLF		NO	TAPE & REEL	
10127070-001C-TRLF		YES		



- NOTES:
- MATERIAL:
    - HOUSING HIGH TEMP THERMOPLASTIC, UL 94V-0  
COLOUR: BLACK
    - TERMINAL: COPPER ALLOY
    - HOLD DOWN: COPPER ALLOY
  - FINISH:
    - TERMINAL: 30u" Au PLATING (CONTACT POINT)  
OVER 50u" NICKEL
    - SOLDER TAIL: 100u" MIN Sn OVER 50u" NICKEL
    - HOLD DOWN: 100u" MIN Sn OVER 50u" NICKEL
  - THE STANDARD PACKAGING IS IN TRAY UNLESS OTHERWISE SPECIFIED
  - THE HOUSING WILL WITHSTAND EXPOSURE TO 260°C PEAK TEMPERATURE FOR 10 SECONDS IN A CONVECTION, INFRA-RED OR VAPOR PHASE REFLOW OVEN.
  - THIS PRODUCT MEETS EUROPEAN UNION DIRECTIVES AND OTHER COUNTRY REGULATIONS AS DESCRIBED IN GS-47-0004.
  - A  $\Delta$  SYMBOL WILL BE NEXT TO ANY DIMENSION, VIEW, OR NOTE WHICH HAS BEEN MODIFIED WITH THE CURRENT DRAWING REVISION.



Copyright FCI.

spec ref	-	dr	Koon-Pak Tay	20131117	projection	MM	size	A3	scale	1:1
tolerance std	-	eng	Koon-Pak Tay	20131117	chr	-	ecn no	-	rel level	Released
TOLERANCES UNLESS OTHERWISE SPECIFIED		appr	Chan-Hong Tan	20131117	product family					
surface	linear	0.X	±0.30	FCI		title	SAS RECEPTACLE		eng no	10127070
		0.XX	±0.20	www.fci.com		cat. no.	Product - Customer Draw		rev	A
	angular	0°	±2°					sheet 2 of 2		

Prod File - REC C - 2009-04-09