

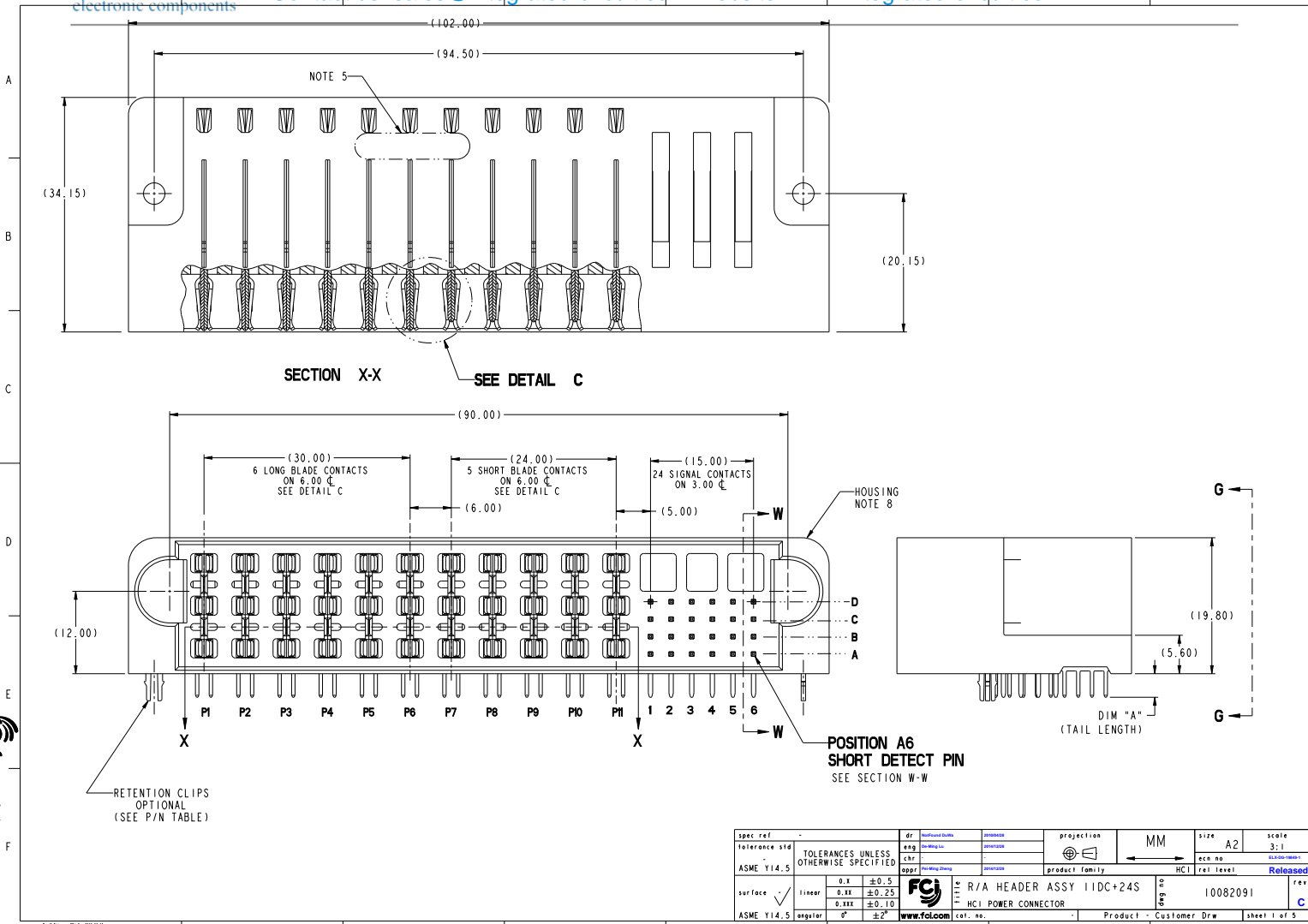
Excellent Integrated System Limited

Stocking Distributor

Click to view price, real time Inventory, Delivery & Lifecycle Information:

[FCI](#)
[10074866-001LF](#)

For any questions, you can email us directly:
sales@integrated-circuit.com



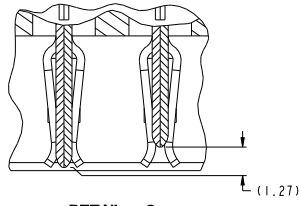
spec ref		dr	Jeffrey Smith	approval		projection	MM	size	A2	scale	3:1
tolerance std	ASME Y14.5	eng	John Wang	revision		product family	HCI	acc no	10082091	rel level	Released
surface	linear	appr	Wei Wang	revision		FCI	R/A HEADER ASSY 11DC+24S	rev	C		
	angular					www.fci.com	HCI POWER CONNECTOR	Product	Customer Draw	sheet	1 of 5

PDS: Rev :C

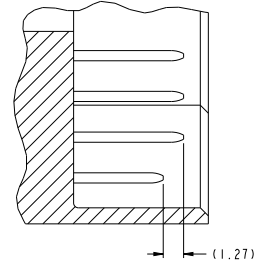
STATUS: Released

Printed: Dec 30, 2014

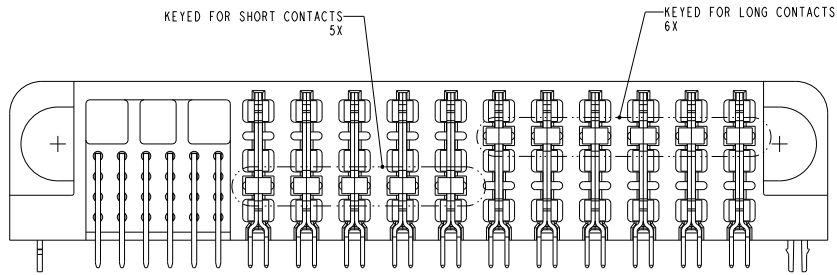
Copyright FCI



DETAIL C
SCALE 6:1
POWER MATING
SEQUENCE



SECTION W-W
SCALE 6:1
SIGNAL MATING
SEQUENCE



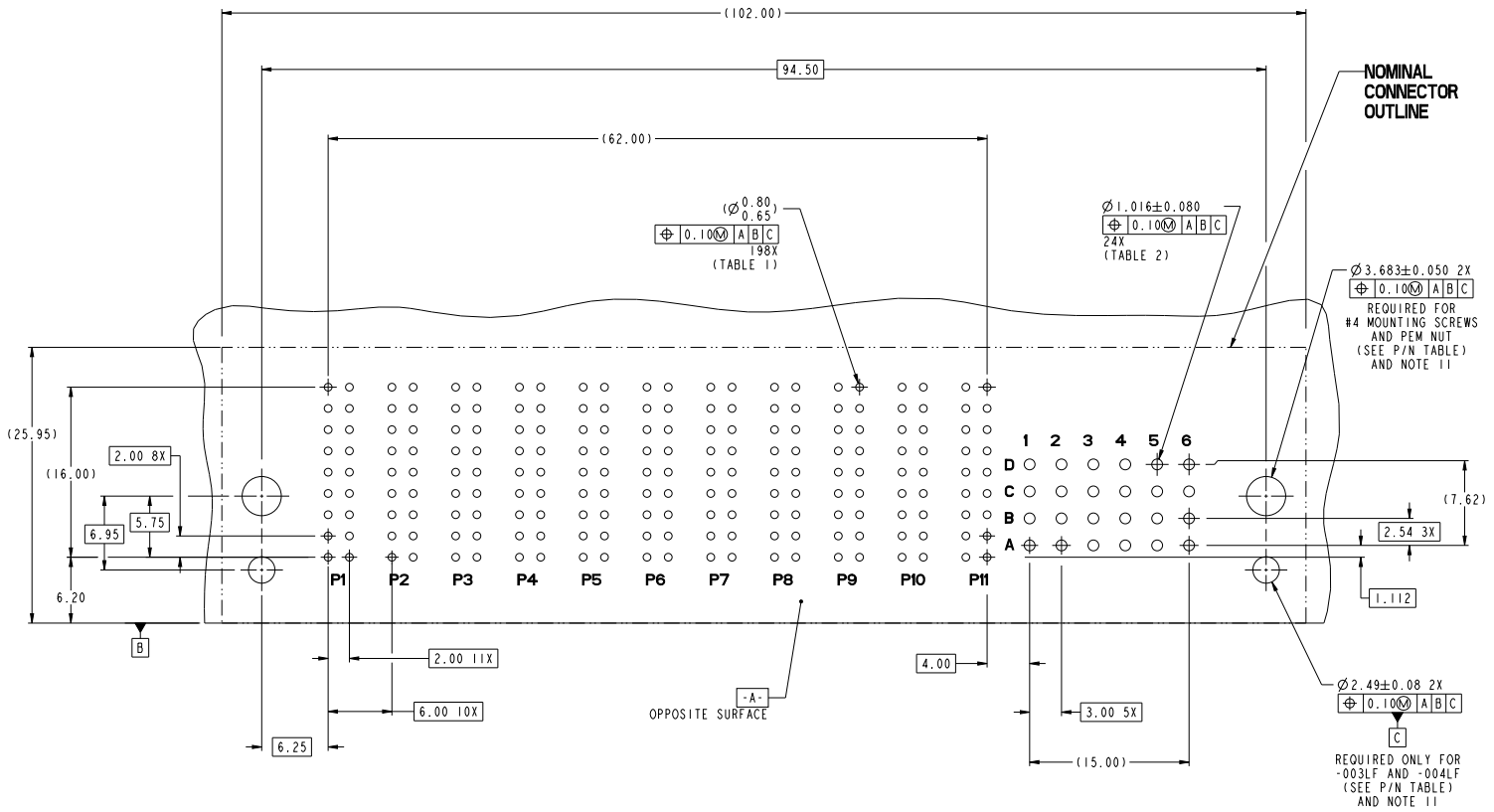
VIEW G-G

dr: Yi-Hsiang Shiao	designed by: jasonchen	projection: MM	size: A2	scale: 3:1
eng: Yi-Hsiang Shiao	checked by: jasonchen		acc no:	rel level: Released
chr: Yi-Hsiang Shiao	approved by: jasonchen	product family: HCI	part no: 10082091	rev: C
oppr: Yi-Hsiang Shiao	approved by: jasonchen	R/A HEADER ASSY 11DC+24S HCI POWER CONNECTOR		
www.fci.com		cat. no.:	Product - Customer Draw	sheet 2 of 5

PDS: 6 rev :C

STATUS: Released

Printed: Dec 30, 2014



**RECOMMENDED PCB LAYOUT
COMPONENT SIDE**

NOTE 6

dr: WenHua.Du	designed: Jianhua	projection:	MM	size: A2	scale: 2:1
eng: WenHua	checked: Jianhua			acc no:	10074866-001
chr: WenHua	approved: Jianhua	product family:		rel level:	Released
appr: WenHua	released: Jianhua				
	R/A HEADER ASSY 11DC+24S	part no:	10082091	rev:	C
www.fci.com	HCI POWER CONNECTOR	cat. no:		Product:	Customer Draw
		Product:	Customer Draw	sheet 3 of 5	

PDS: Rev: C

STATUS: Released

Printed: Dec 30, 2014

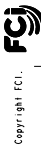
Copyright FCI

A
B
C
D
E
F

A
B
C
D
E
F

TOP LAYER DESCRIPTION	TABLE 1 (HCI POWER) PLATED THROUGH-HOLE REQUIREMENTS							
	DRILLED HOLE DIAMETER	COPPER THICKNESS	TIN-LEAD THICKNESS	NICKEL THICKNESS	GOLD THICKNESS	TIN THICKNESS	SILVER THICKNESS	FINISHED HOLE DIAMETER
TIN-LEAD	0.81-0.86 (0.85 DRILL)	0.025 - 0.050	0.005 - 0.015	--	--	--	--	0.65 - 0.80
IMMERSION TIN	0.81-0.86 (0.85 DRILL)	0.025 - 0.050	--	--	--	0.9 - 1.5um	--	0.70 - 0.80
IMMERSION SILVER	0.81-0.86 (0.85 DRILL)	0.025 - 0.050	--	--	--	--	0.15 - 0.65um	0.70 - 0.80
COPPER (SEE NOTE 9)	0.81-0.86 (0.85 DRILL)	0.025 - 0.050	--	--	--	--	--	0.70 - 0.80
GOLD	0.81-0.86 (0.85 DRILL)	0.025 - 0.050	--	0.003 - 0.007	FLASH UP TO 0.0002	--	--	0.69 - 0.80

TOP LAYER DESCRIPTION	TABLE 2 (HPC SIGNALS) PLATED THROUGH-HOLE REQUIREMENTS							
	DRILLED HOLE DIAMETER	COPPER THICKNESS	TIN-LEAD THICKNESS	NICKEL THICKNESS	GOLD THICKNESS	TIN THICKNESS	SILVER THICKNESS	FINISHED HOLE DIAMETER
TIN-LEAD	1.125-1.175 ($\varnothing .0453 \pm .0010$)	0.025-0.050	0.005-0.015	--	--	--	--	0.94 - 1.10 ($\varnothing .040 \pm .003$)
IMMERSION TIN			--	--	--	--	--	
IMMERSION SILVER			--	--	--	--	--	
COPPER (SEE NOTE 9)			--	--	--	--	--	
GOLD			--	--	--	--	--	



Copyright FCI.

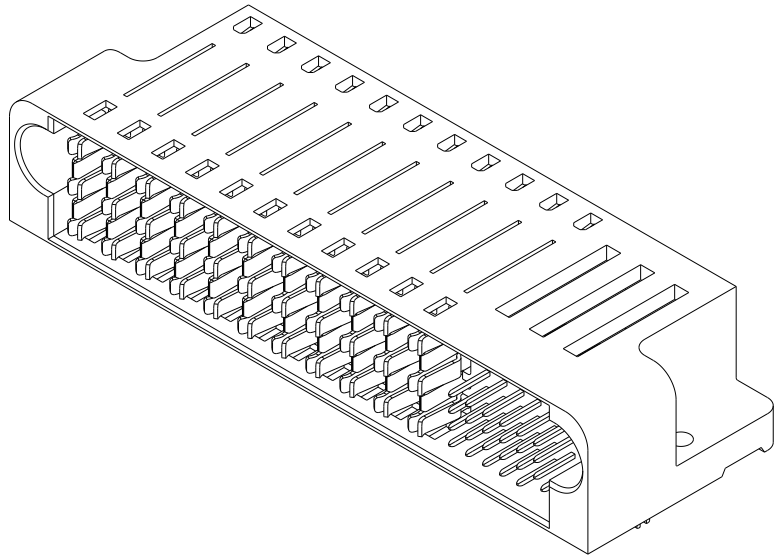
dr: Yi-Hsiang Shieh	designed: jshieh	projection:	MM	size: A2	scale: 2:1
eng: Yi-Hsiang Shieh	checked: jshieh	acc no: 10074866-001	rel level: Released		
appr: Yi-Hsiang Shieh	approved: jshieh	product family: R/A HEADER ASSY IIDC+24S	part no: 10082091	rev: C	
www.fci.com		Product - Customer Draw		sheet 4 of 5	

PDS: Rev :C

STATUS: Released

Printed: Dec 30, 2014

PART NUMBER	RETENTION CLIPS	#4 SCREW	DIM A ±0.25 (TAIL LENGTH)	TAIL TYPE
10082091-001LF	NO	YES	3.43	SOLDER TAIL
10082091-002LF	NO	YES	4.70	SOLDER TAIL
10082091-003LF	YES	NO	3.43	SOLDER TAIL
10082091-004LF	YES	NO	4.70	SOLDER TAIL



NOTES:

1. CONNECTOR MATERIALS:
HOUSING: HIGH TEMPERATURE THERMOPLASTIC, BLACK
UL 94V-0 COMPLIANT
CONTACTS: HIGH PERFORMANCE COPPER ALLOY
2. CONTACT FINISH (ref GS-12-380 SECTION 5.2)
3. PRODUCT SPECIFICATION: GS-12-380.
4. APPLICATION SPECIFICATION: GS-20-070.
5. PRODUCT MARKING (PRODUCT NUMBER & DATE CODE) ON HOUSING IN AREA SHOWN.
6. MINIMUM NOMINAL PCB THICKNESS: 1.6mm
7. PACKAGING MEETS FCI SPECIFICATION GS-14-1073.
8. HOUSING COMPONENT WILL WITHSTAND EXPOSURE TO 260°C PEAK TEMPERATURE FOR 60 SECONDS IN A CONVECTION, INFRA-RED, OR VAPOR PHASE REFLOW OVEN.
9. COPPER PLATING THICKNESS IN CENTER OF VIA-HOLE CAN BE NO MORE THAN 0.003 LESS THAN OTHER AREAS.
10. ALL HOLE SIZES ARE FINISHED HOLE SIZES.
11. MOUNTING HOLES ARE UNPLATED.

dr: Sudhakar Sathya	designed: Sudhakar Sathya	projection:	MM	size: A2	scale: 3:1
eng: Sudhakar Sathya	checked: Sudhakar Sathya			acc no:	10074866-001
chr: Sudhakar Sathya	approved: Sudhakar Sathya	product family: HCl	rel level: Released		
appr: Sudhakar Sathya	approved: Sudhakar Sathya				
		R/A HEADER ASSY 11DC+24S		10082091	rev C
www.fci.com		HCl POWER CONNECTOR		Product - Customer Draw sheet 5 of 5	

PDS: Rev :C

STATUS: Released

Printed: Dec 30, 2014

Copyright FCI