

## Excellent Integrated System Limited

Stocking Distributor

Click to view price, real time Inventory, Delivery & Lifecycle Information:

[FCI](#)  
[10120214-004LF](#)

For any questions, you can email us directly:  
[sales@integrated-circuit.com](mailto:sales@integrated-circuit.com)

| PRODUCT NO.    | DIM. A | DIM. B | REMARK |
|----------------|--------|--------|--------|
| 10120214-002LF |        |        | NA     |
| 10120214-003LF | 4.00   | 3.48   |        |
| 10120214-004LF | 3.90   | 3.38   |        |

A

B

C

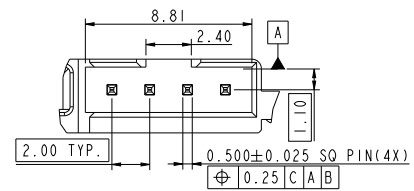
D

A

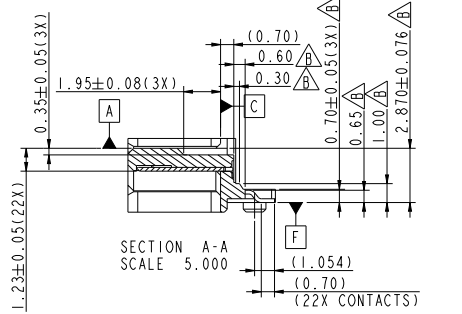
B

C

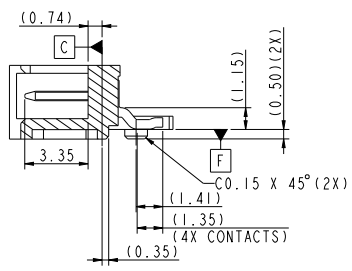
D



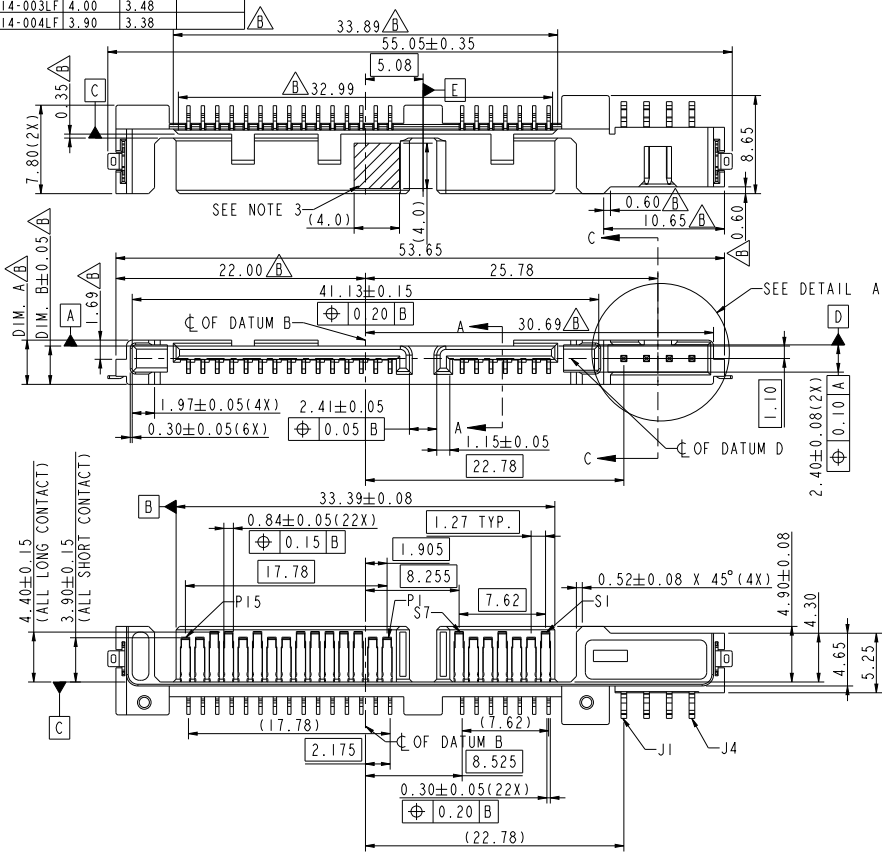
DETAIL A  
SCALE 5.000



SECTION A-A  
SCALE 5.000



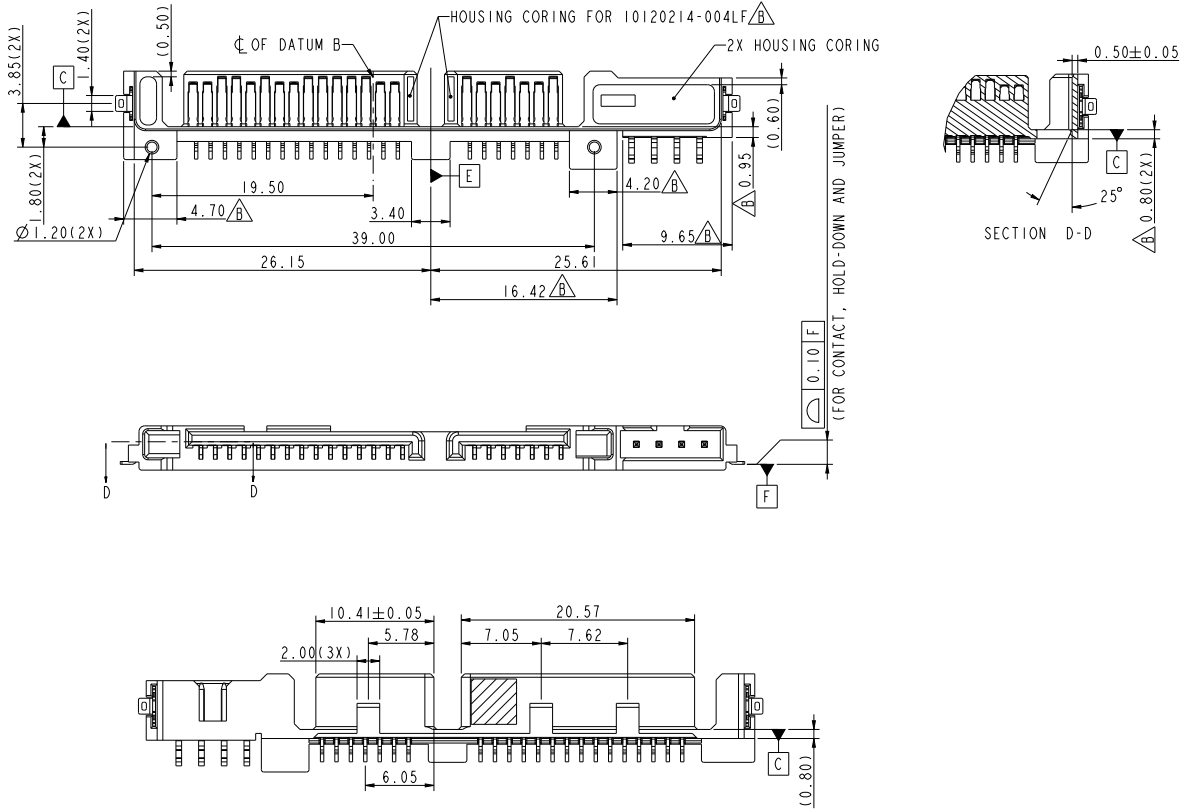
SECTION C-C  
SCALE 5.000



|          |               |            |                                       |                |             |          |            |          |               |     |             |          |                            |     |   |
|----------|---------------|------------|---------------------------------------|----------------|-------------|----------|------------|----------|---------------|-----|-------------|----------|----------------------------|-----|---|
| spec ref | tolerance std | ASME Y14.5 | TOLERANCES UNLESS OTHERWISE SPECIFIED | dr             | Jeffrey Lim | 20121101 | projection | MM       | size          | A3  | scale       | 3.000    |                            |     |   |
| eng      | Jeffrey Lim   | 20121016   |                                       | chr            |             |          |            | ecn no   | ELX-S-16065-1 |     |             |          |                            |     |   |
| appr     | Chen-Hong Tan | 20131016   |                                       | product family |             |          | rel level  | Released |               |     |             |          |                            |     |   |
| surface  | linear        | 0.X        | ±0.45                                 | 0.XX           | ±0.25       | 0.XXX    | ±          | angular  | 0°            | ±3° | www.fci.com | cat. no. | 2.5" LOW PROFILE SATA PLUG | rev | B |
| dwg no   | 10120214      | Product    | Customer Drw                          | sheet          | 1 of 3      |          |            |          |               |     |             |          |                            |     |   |

Copyright FCI.

PRODUCT NO:  
SEE TABLE



Copyright FCI.

|          |               |                                       |        |             |               |          |                            |              |           |               |       |       |   |
|----------|---------------|---------------------------------------|--------|-------------|---------------|----------|----------------------------|--------------|-----------|---------------|-------|-------|---|
| spec ref | tolerance std | TOLERANCES UNLESS OTHERWISE SPECIFIED |        | dr          | Jeffrey Lim   | 20121101 | projection                 | MM           | size      | A3            | scale | 3.000 |   |
|          |               | 0.X                                   | ±0.45  | eng         | Jeffrey Lim   | 20121016 |                            |              | ecn no    | ELX-S-16065-1 |       |       |   |
|          |               | 0.XX                                  | ±0.25  | chr         | -             | -        |                            |              | rel level | Released      |       |       |   |
|          |               | 0.XXX                                 | ±-     | appr        | Chan-Hong Tan | 20131016 | product family             | -            |           |               |       |       |   |
| surface  | ✓             | linear                                | 0° ±3° |             |               | title    | 2.5" LOW PROFILE SATA PLUG |              | eng no    | 10120214      |       | rev   | B |
|          |               | angular                               | 0° ±3° | www.fci.com | cat. no.      | -        | Product - Customer Draw    | sheet 2 of 3 |           |               |       |       |   |

Prod File - REV C - 2009-04-20

1

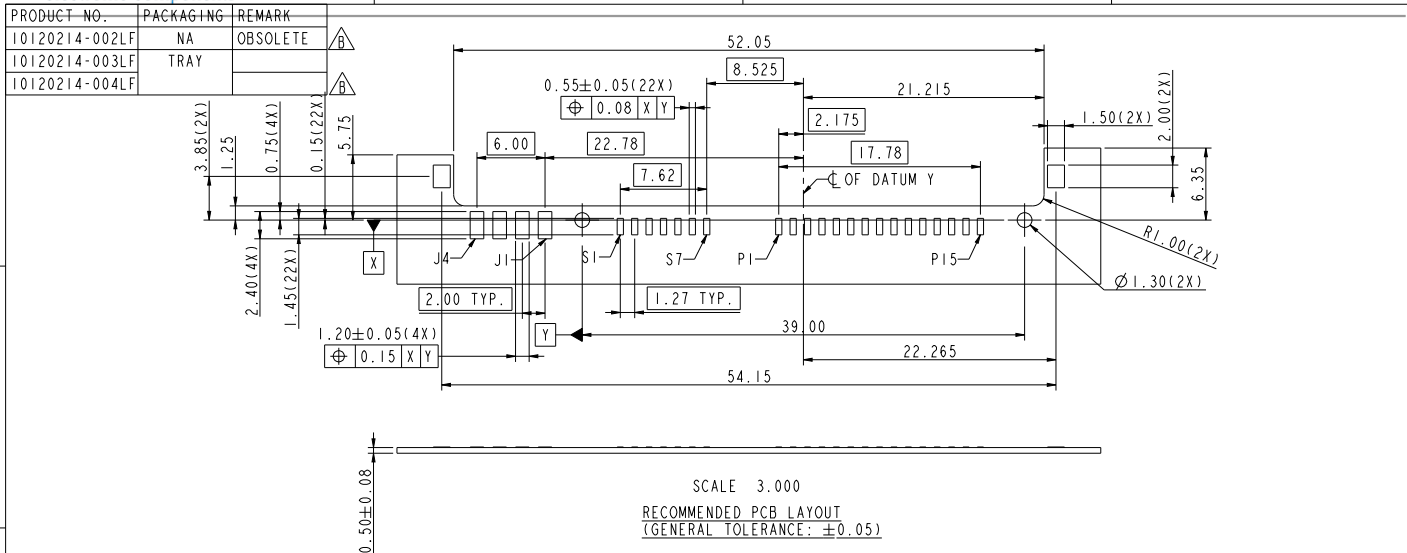
2

3

PDS: Rev B

STATUS: Released

Printed: Oct 19, 2013



NOTES:

- HOUSING: HIGH TEMPERATURE THERMOPLASTIC, BLACK, UL94V-0, REGRIND 20% MAX. CONTACT, JUMPER & HOLD DOWN: COPPER ALLOY
- FINISH:  
CONTACT: 1.27um MIN. Ni UNDERPLATE OVERALL, 0.38um MIN. Au ON CONTACT AREA, 1.91um MIN. 100% MATTE Sn(LEAD-FREE) ON SOLDER TAILS  
JUMPER: 1.27um MIN. Ni UNDERPLATE OVERALL, 0.38um MIN. Au ON CONTACT AREA, 1.91um MIN. 100% MATTE Sn(LEAD-FREE) ON SOLDER TAILS  
HOLD DOWN: 1.91um MIN. 100% MATTE Sn(LEAD-FREE) OVER 1.27um MIN. Ni UNDERPLATE
- FLAT AREA FREE FROM BURR AND FLASHES FOR VACUUM PICK-UP
- PRODUCT SPECIFICATION: GS-12-194
- PACKAGING SPECIFICATION: GS-14-952
- THIS PRODUCT MEETS EUROPEAN UNION DIRECTIVES AND OTHER COUNTRY REGULATIONS AS DESCRIBED IN GS-47-0004
- THE HOUSING WILL WITHSTAND EXPOSURE TO 260°C PEAK TEMPERATURE FOR 10 SECONDS IN A CONVECTION, INFRA-RED OR VAPOR PHASE REFLOW OVEN
- A SYMBOL  $\triangle$  WILL BE NEXT TO ANY DIMENSION, VIEW OR NOTE WHICH HAS BEEN MODIFIED WITH THE CURRENT DRAWING REVISION

|               |                             |                |             |                         |                            |
|---------------|-----------------------------|----------------|-------------|-------------------------|----------------------------|
| spec ref      | dr Jeffrey Lim 20121101     | projection     | MM          | size A3                 | scale 3.000                |
| tolerance std | eng Jeffrey Lim 20131016    | chr            |             | ecn no ELX-S-16065-1    |                            |
|               | appr Chen-Hong Tan 20131016 | product family |             | rel level               | Released                   |
| surface       | linear                      | 0.X ±0.45      | www.fci.com | title                   | 2.5" LOW PROFILE SATA PLUG |
|               | 0.XX ±0.25                  | cat. no.       |             | eng no                  | 10120214                   |
|               | 0.XXX ±                     |                |             | rev                     | B                          |
| angular       | 0° ±3°                      |                |             | Product - Customer Draw | sheet 3 of 3               |