

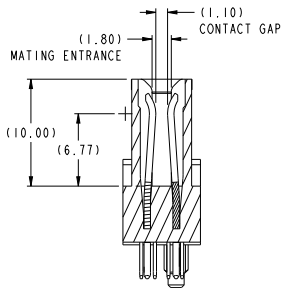
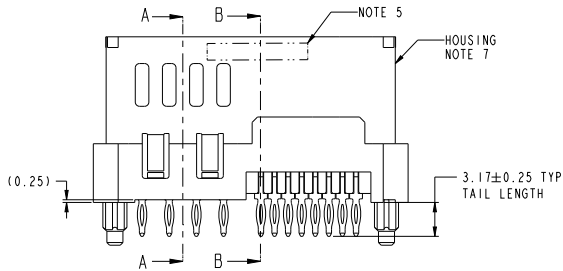
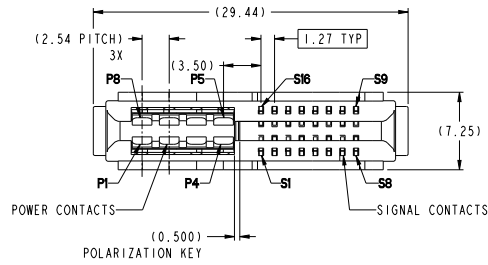
Excellent Integrated System Limited

Stocking Distributor

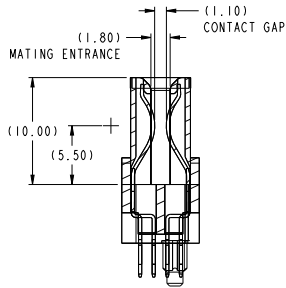
Click to view price, real time Inventory, Delivery & Lifecycle Information:

[FCI](#)
[10120798-001LF](#)

For any questions, you can email us directly:
sales@integrated-circuit.com



SECTION A-A
SCALE 4:1



SECTION B-B
SCALE 4:1

spec. ref.	-	dr.	Wei Wang	date	20160516	projection	mm	size	A2	scale	1:1
tolerance	ISO 406	eng	Wei Wang	checked				acc. no.	10120798	rel. level	Released
	ISO 1101	chr.	Wei Wang	approved			product family		rev	B	
surface	linear	0.1	±0.3	Amphenol FCI VERT RECT 8P + 16S HIGH POWER CARD EDGE		Product - Customer Draw		sheet 1 of 4			
	angular	0.2X	±0.10								
		0.2X	±0.05								
		0°	±2°								

PDS: Rev: B

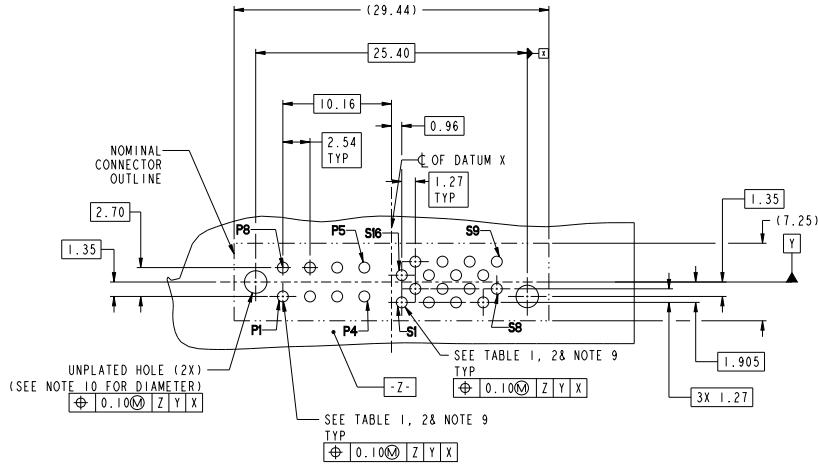
STATUS: Released

Printed: May 24, 2016

© 2018 Amphenol FCI

CONTACT TYPE	TOP LAYER DESCRIPTION	TABLE 1 (HPCE / SOLDER TAILS) PLATED THROUGH-HOLE REQUIREMENTS				
		DRILLED HOLE DIAMETER	COPPER THICKNESS	TIN-LEAD THICKNESS	TIN THICKNESS	FINISHED HOLE DIAMETER
POWER & SIGNAL	TIN-LEAD	1.10-1.16 (1.15 DRILL)	0.025 - 0.050	0.005 - 0.015	--	0.94 - 1.10
	IMMERSION TIN	1.10-1.16 (1.15 DRILL)	0.025 - 0.050	--	0.9 - 1.5um	0.94 - 1.10
	COPPER (SEE NOTE 8)	1.10-1.16 (1.15 DRILL)	0.025 - 0.050	--	--	0.94 - 1.10

CONTACT TYPE	TOP LAYER DESCRIPTION	TABLE 2 (HPCE / PRESS-FIT TAILS) PLATED THROUGH-HOLE REQUIREMENTS				
		DRILLED HOLE DIAMETER	COPPER THICKNESS	TIN-LEAD THICKNESS	TIN THICKNESS	FINISHED HOLE DIAMETER
POWER & SIGNAL	TIN-LEAD	0.81-0.86 (0.85 DRILL)	0.025 - 0.050	0.005 - 0.015	--	0.65 - 0.80
	IMMERSION TIN	0.81-0.86 (0.85 DRILL)	0.025 - 0.050	--	0.9 - 1.5um	0.70 - 0.80
	COPPER (SEE NOTE 8)	0.81-0.86 (0.85 DRILL)	0.025 - 0.050	--	--	0.70 - 0.80



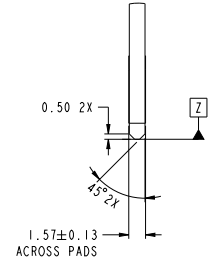
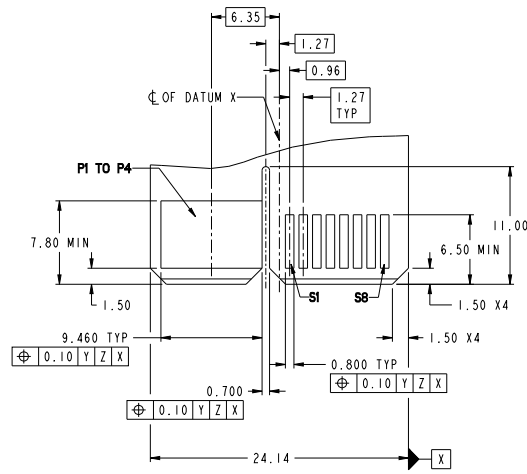
spec. ref.	-	dr	Wei Wang	date	20160516	projection	mm	size	A2	scale	1:1
tolerance	ISO 406 ISO 1101	ISO 1302	tolerances unless otherwise specified	eng	Wei Wang	checked		acc. no.	10120798	rel. level	Released
surface	linear	0.1	±0.3	0.2X	±0.10	0.3X	±0.05	angular	0°	±2°	
Amphenol FCI		VERT RECT 8P + 16S		HIGH POWER CARD EDGE		Product - Customer Draw		sheet 2 of 4		rev B	

PDS: Rev: B

STATUS: Released

Printed: May 24, 2016

Amphenol FCI © 2016 FCI



spec. ref.	-	dr.	wei-long.zhang	approved	projection	mm	size	A2	scale	1:1
tolerance	ISO 406 ISO 1101	TOLERANCES UNLESS OTHERWISE SPECIFIED	eng	wei-long.zhang	checked		acc. no.	10120798-001	rel. level	Released
surface	linear	0.X ±0.3 0.XX ±0.10 0.XXX ±0.05	appr.	wei-long.zhang	approved	product family	VERT RECT 8P + 16S HIGH POWER CARD EDGE	10120798	rev	B
ISO 1302	angular	° ±2	cat. no.		Product	Customer Draw	sheet 3 of 4			

PDS: Rev: B

STATUS: Released

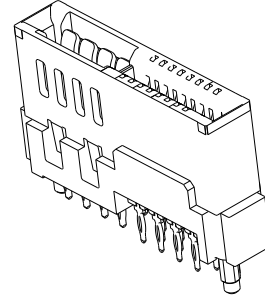
Printed: May 24, 2016

Amphenol FCI

© 2018 FCI

HPCE PART NUMBER (TABLE 3)

PART NUMBER	TAIL TYPE	ORIENTATION KEY	DIM "A" TYPICAL TAIL LENGTH	DIM "B" RECOMMENDED BOARD THICKNESS
10120798-001LF	SOLDER	YES	3.17 ±0.25	1.59 - 2.38
10120798-002LF	SOLDER	NO		
10120798-003LF	PRESS-FIT	YES	3.17 ±0.25	1.57 MIN
10120798-004LF	PRESS-FIT	NO		



NOTES:

1. CONNECTOR MATERIALS:
 HOUSING: HIGH TEMPERATURE THERMAL PLASTIC, BLACK
 UL 94V-0 COMPLIANT
 CONTACTS: HIGH PERFORMANCE COPPER ALLOY.
2. CONTACT FINISH REF. GS-12-604 SECTION 5.2.
3. PRODUCT SPECIFICATION: GS-12-604.
4. APPLICATION SPECIFICATION: GS-20-128.
5. PRODUCT MARKING ON HOUSING IN AREA SHOWN MEETS AFCI SPECIFICATION: GS-24-007.
6. PACKAGING MEETS FCI SPECIFICATION GS-14-937.
7. HOUSING COMPONENT WILL WITHSTAND EXPOSURE TO 260°C PEAK TEMPERATURE FOR 60 SECONDS IN A CONVECTION, INFRA-RED, OR VAPOR PHASE REFLOW OVEN.
8. COPPER PLATING THICKNESS IN CENTER OF VIA-HOLE CAN BE NO MORE THAN 0.003 LESS THAN OTHER AREAS.
9. ALL HOLE SIZES ARE FINISHED HOLE SIZES.
10. MOUNTING HOLES ARE UNPLATED
 Ø 2.40 +/- 0.1 FOR PRESS-FIT TAILS
 Ø 2.10 +/- 0.1 FOR SOLDER TAILS
11. PRESS FIT APPLICATION TOOL DRAWING : 10119453.
12. A SYMBOL WILL BE NEXT TO ANY DIMENSION, VIEW, OR NOTE WHICH HAS BEEN MODIFIED WITH THE CURRENT DRAWING REVISION.

spec. ref.	-	dr.	weiwang@fcicorp.com	projection	mm	size	A2	scale	1:1
tolerance	ISO 406 ISO 1101	tolerances unless otherwise specified	eng	weiwang@fcicorp.com	ISO 1302	acc. no.	10120798	rel. level	Released
surface	linear	0.1 ±0.3 0.2X ±0.10 0.25X ±0.05	chk	weiwang@fcicorp.com	angular	°	product family	VERT RECT 8P + 16S HIGH POWER CARD EDGE	rev
ISO 1302	angular	°	appr	weiwang@fcicorp.com	Product	Customer Drw	sheet 4 of 4		B

PDS: Rev: B

STATUS: Released

Printed: May 24, 2016

© 2018 AFCI