

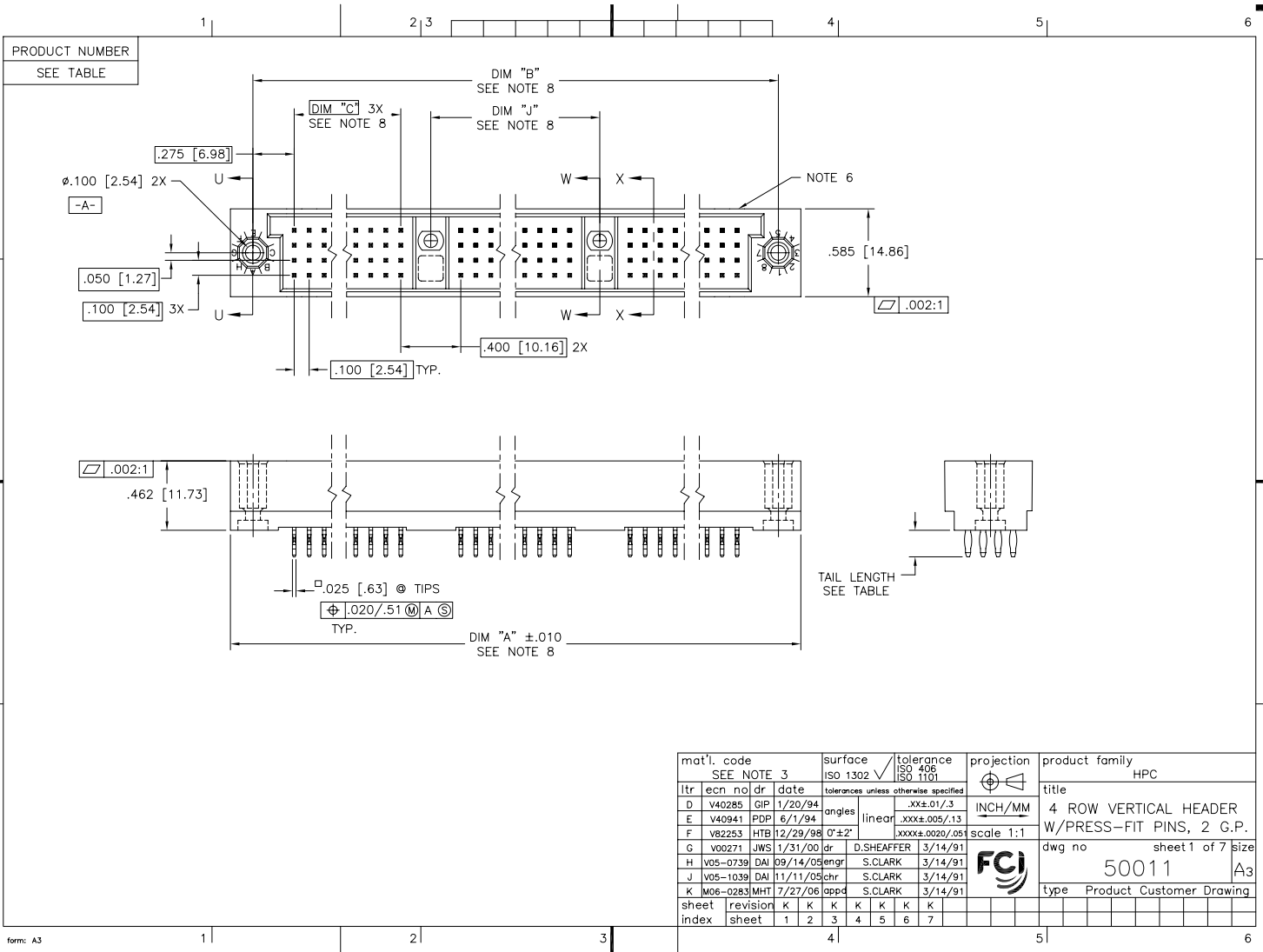
## Excellent Integrated System Limited

Stocking Distributor

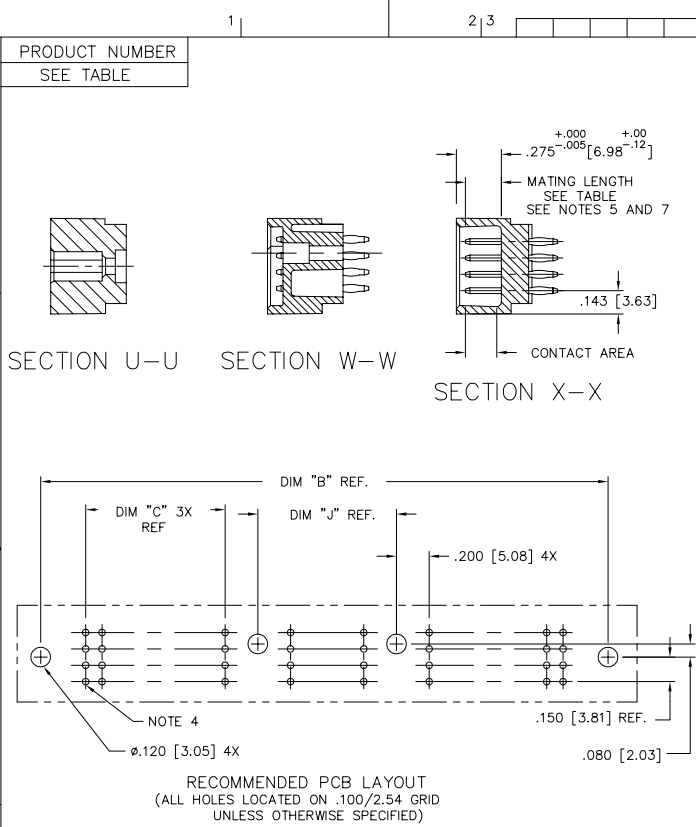
Click to view price, real time Inventory, Delivery & Lifecycle Information:

[FCI](#)  
[50011-1516D](#)

For any questions, you can email us directly:  
[sales@integrated-circuit.com](mailto:sales@integrated-circuit.com)



mat'l. code		surface		tolerance		projection		product family	
SEE NOTE 3		ISO 1302		ISO 406		ISO 1101		HPC	
ltr	ecr	no	dr	date		tolerances unless otherwise specified		title	
D	V40285	GIP		1/20/94		.XX±.01/.3		4 ROW VERTICAL HEADER	
E	V40941	PDP		6/1/94		.XXX±.005/.13		W/PRESS-FIT PINS, 2 G.P.	
F	V82253	HTB		12/29/98		0'±2'		scale 1:1	
G	V00271	JWS		1/31/00		dr		D.SHEAFFER 3/14/91	
H	V05-0739	DAI		09/14/05		engr		S.CLARK 3/14/91	
J	V05-1039	DAI		11/11/05		chr		S.CLARK 3/14/91	
K	M06-0283	MHT		7/27/06		appd		S.CLARK 3/14/91	
sheet	revision	K	K	K	K	K	K	FCJ	
index	sheet	1	2	3	4	5	6	7	
								product family	
								HPC	
								title	
								4 ROW VERTICAL HEADER	
								W/PRESS-FIT PINS, 2 G.P.	
								dwg no	
								50011	
								sheet 1 of 7 size	
								A3	
								type	
								Product Customer Drawing	



- NOTES:
- PRODUCT NUMBERING CODE:  
 50011 - X YYY Z LF  
 X: LEAD FREE (OPTIONAL)  
 YYY: TAIL LENGTH (SEE TABLE)  
 Z: NO. OF POSITIONS (SEE NOTE 2)  
 LF: PLATING (SEE TABLE)  
 BASE NUMBER
  - PRODUCT NUMBERING CODE FOR SELECT LOAD PART NUMBERS:  
 50011 - XXXXX LF  
 XXXXX: LEAD FREE (OPTIONAL)  
 SEQUENCE NUMBER  
 ALWAYS "XX"  
 BASE NUMBER
  - THIS PRODUCT IS CONFIGURED IN SIZES OF 30 thru 150 COLUMNS IN INCREMENTS OF THREE.  
 i.e.: 30,33,36,39,.....147,150.
  - HOUSING MATERIAL: GLASS AND MINERAL FILLED HIGH TEMP. THERMOPLASTIC. FLAME RETARDANT PER UL94V-0. COLOR: BLACK.  
 PIN MATERIAL: PHOS BRONZE
  - Ø.0453/1.151 DRILLED HOLE PLATED WITH .0003/.007 MIN. SnPb OVER .001/.03 to .003/.08 Cu. PLATING TO ACHIEVE A Ø.040±.003/1.02±.08 HOLE.
  - TO ASSURE PROPER INSTALLATION: TOOLING, AS SPECIFIED IN INSTRUCTION MANUAL 155915-001 MUST BE USED. PIN MATING LENGTH WILL BE ±.002/.05 AFTER INSTALLATION.
  - COMPANY NAME, PART NUMBER AND LOT CODE TO APPEAR ON THIS SURFACE PER BUS-12-108.
  - REFERENCE 50809 FOR F.M.L.B. AVAILABLE OPTIONS AND WORKSHEET.
  - LENGTH FORMULAS:  
 DIM "A" = .100/2.54 x NO. OF COLUMNS +1.35/34.3  
 DIM "B" = .100/2.54 x NO. OF COLUMNS +1.050/26.67  
 DIM "C" = .100/2.54 x NO. OF COLUMNS DIVIDED BY 3 -.100/2.54  
 DIM "J" = .100/2.54 x NO. OF COLUMNS DIVIDED BY 3 +.300/7.62
  - THIS PRODUCT (WITH "LF" SUFFIX) MEETS EUROPEAN UNION DIRECTIVES AND OTHER COUNTRY REGULATIONS AS DESCRIBED IN GS-22-008.
  - THIS HOUSING WILL WITHSTAND EXPOSURE TO 260° C PEAK TEMPERATURE FOR 10-30 SECONDS IN A CONVECTION, INFRA-RED OR VAPOR PHASE REFLOW OVEN.

mat'l. code		surface	tolerance	projection	product family
SEE NOTE 3		ISO 1302	ISO 406	ISO 1101	HPC
ltr	ecr	no	ldr	date	title
K					4 ROW VERTICAL HEADER W/PRESS-FIT PINS, 2 G.P.
		angles	linear	linear	INCH/MM
					scale 1:1
		dr	D.SHEAFFER	3/14/91	FCJ
		enrg	S.CLARK	3/14/91	
		chr	S.CLARK	3/14/91	
		appd	S.CLARK	3/14/91	
sheet	revision				dwg no
index	sheet				sheet 2 of 7 size
					50011 A3
					type Product Customer Drawing

PRODUCT NUMBER  
SEE TABLE

SELECT LOAD (50011-XX005 AND 50011-XX005LF ONLY)

	1	5	10	15	20	25	30	35	40	45	GUIDE
D	B						B	B	B		
C	B	B	B	B	B	B	B	B	B		
B	B	B	B	B	B	B	B	B	B		
A	B	B	B	B	B	B	B	B	B		
	1										
	46	50	55	60	65	70	75	80	85	90	GUIDE
						B	B				
						B	B				
						B	B				
						B	B				
	91	95	100	105	110	115	120	125	130	135	
					B	B	B				
					B	B	B				
					B	B	B				
					B	B	B				

SPECIAL NOTES FOR -XX005 AND -XX005LF ONLY:

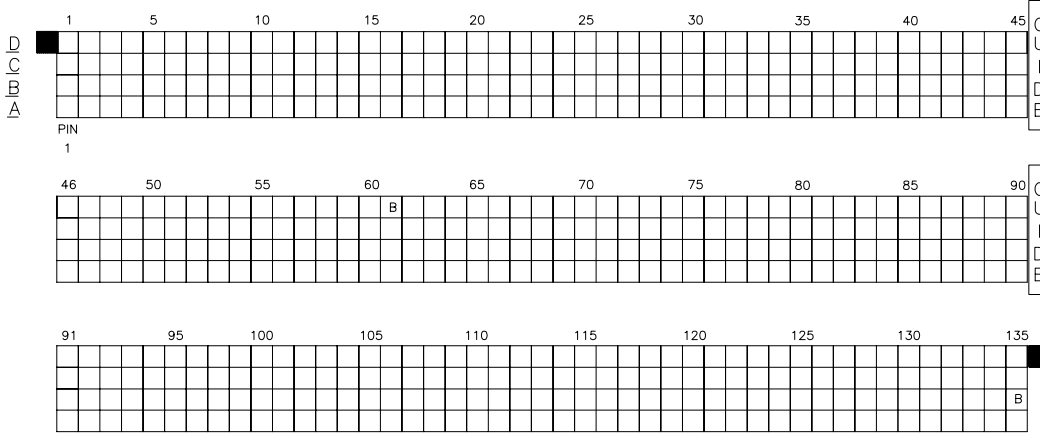
- ALL POSITIONS ARE LOADED WITH "A", EXCEPT AS SHOWN.
- COLUMN 1 ROW A IS DESIGNATED AS SIGNAL PIN 1, AS VIEWED FROM THE MATING FACE.
- SIGNAL DATA FOR 50011-XX005 AND 50011-XX005LF:  
 SIZE 4 X 135  
 TOTAL NO. OF POSITIONS - 540  
 NO. OF POSITIONS LOADED - 540

ITEM KEY	QTY.	MATING LENGTH	TAIL LENGTH
A	455	.200/5.59	.410/10.41
B	85	.260/6.60	.420/10.67

mat'l. code	surface	tolerance	projection	product family
SEE NOTE 3	ISO 1302	ISO 406	ISO 1101	HPC
ltr	ecr	no	ldr	date
K				
	angles	linear		
		.XX±.01/.3		
		.XXX±.005/.13		
	0'±2'	.XXXX±.0020/.05		
dr	D.SHEAFFER	3/14/91		
enr	S.CLARK	3/14/91		
chr	S.CLARK	3/14/91		
appd	S.CLARK	3/14/91		
sheet	revision			
index	sheet			

PRODUCT NUMBER  
SEE TABLE

SELECT LOAD (50011-XX007 AND 50011-XX007LF ONLY)



- SPECIAL NOTES FOR -XX007 AND -XX007LF ONLY:
1. ALL POSITIONS ARE LOADED WITH "A", EXCEPT AS SHOWN.
  2. COLUMN 1 ROW A IS DESIGNATED AS SIGNAL PIN 1, AS VIEWED FROM THE MATING FACE.
  3. SIGNAL DATA FOR 50011-XX007 AND 50011-XX007LF:  
 SIZE 4 X 135  
 TOTAL NO. OF POSITIONS - 540  
 NO. OF POSITIONS LOADED - 540

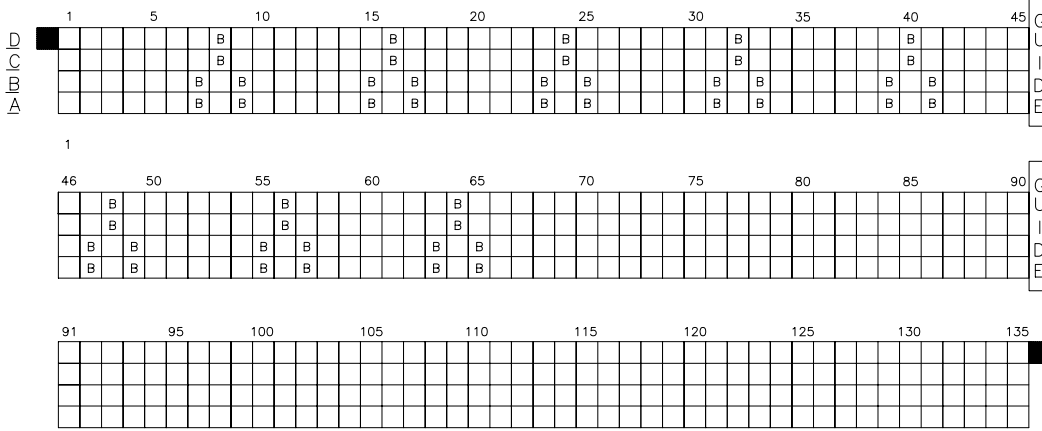
ITEM KEY	QTY.	MATING LENGTH	TAIL LENGTH
A	538	.200/5.08	.177/4.50
B	2	.240/6.10	.177/4.50

mat'l. code		surface	tolerance	projection	product family
SEE NOTE 3		ISO 1302	ISO 406		HPC
ltr	ecr	nol	dr	date	title
K					4 ROW VERTICAL HEADER
		angles	linear		W/PRESS-FIT PINS, 2 G.P.
					INCH/MM
		0°±2'	.XX±.01/.3		scale 1:1
			.XXX±.005/.13		
			.XXXX±.0020/.05		
		dr	D.SHEAFFER	3/14/91	dwg no
		enrg	S.CLARK	3/14/91	sheet 4 of 7 size
		chr	S.CLARK	3/14/91	50011
		appd	S.CLARK	3/14/91	A3
					type Product Customer Drawing
sheet	revision				
index	sheet				

PRODUCT NUMBER SEE TABLE																																																																																																																				
SELECT LOAD (50011-XX008 AND 50011-XX008LF ONLY)																																																																																																																				
D C B A	1	5	10	15	20	25	30	35	40	45	GUIDE																																																																																																									
	[Grid with 'X' marks in columns 40-45 for rows A-D]																																																																																																																			
B	46	50	55	60	65	70	75	80	85	GUIDE																																																																																																										
	[Grid with 'X' marks in columns 85-90 for rows B-D]																																																																																																																			
C	91	95	100	105	110	115	120	125	130	135	B																																																																																																									
	[Grid with 'X' marks in columns 91-94 for rows C-D]																																																																																																																			
<p>SPECIAL NOTE FOR -XX008 AND -XX008LF ONLY:</p> <ol style="list-style-type: none"> <li>ALL POSITIONS ARE LOADED WITH "A", EXCEPT AS SHOWN.</li> <li>COLUMN 1 ROW A IS DESIGNATED AS SIGNAL PIN 1, AS VIEWED FROM THE MATING FACE.</li> <li>SIGNAL DATA FOR 50011-XX008 AND 50011-XX008LF:            SIZE 4 X 135            TOTAL NO. OF POSITIONS - 540            NO. OF POSITIONS LOADED - 412</li> </ol>																																																																																																																				
<table border="1" style="width:100%; border-collapse: collapse;"> <thead> <tr> <th>ITEM KEY</th><th>QTY.</th><th>MATING LENGTH</th><th>TAIL LENGTH</th></tr> </thead> <tbody> <tr> <td>A</td><td>410</td><td>.200/5.08</td><td>.177/4.50</td></tr> <tr> <td>B</td><td>2</td><td>.240/6.10</td><td>.177/4.50</td></tr> <tr> <td>X</td><td>128</td><td>N/A</td><td>N/A</td></tr> </tbody> </table>				ITEM KEY	QTY.	MATING LENGTH	TAIL LENGTH	A	410	.200/5.08	.177/4.50	B	2	.240/6.10	.177/4.50	X	128	N/A	N/A	<table border="1" style="width:100%; border-collapse: collapse;"> <tr> <td>mat'l. code</td><td colspan="2">surface</td><td colspan="2">tolerance</td><td colspan="2">projection</td><td colspan="2">product family</td></tr> <tr> <td>SEE NOTE 3</td><td>ISO 1302</td><td>ISO 406</td><td>ISO 1101</td><td colspan="2"></td><td colspan="2">HPC</td></tr> <tr> <td>ltr</td><td>ecm</td><td>no</td><td>ldr</td><td colspan="2">tolerances unless otherwise specified</td><td colspan="2">title</td></tr> <tr> <td>K</td><td></td><td></td><td></td><td>angles</td><td>.XX±.01/.3</td><td colspan="2">4 ROW VERTICAL HEADER</td></tr> <tr> <td></td><td></td><td></td><td></td><td>linear</td><td>.XXX±.005/.13</td><td colspan="2">W/PRESS-FIT PINS, 2 G.P.</td></tr> <tr> <td></td><td></td><td></td><td></td><td>0'±2'</td><td>.XXX±.0020/.05</td><td colspan="2">dwg no 50011 sheet 5 of 7 size A3</td></tr> <tr> <td></td><td></td><td></td><td></td><td>dr</td><td>D.SHEAFFER 3/14/91</td><td colspan="2">type Product Customer Drawing</td></tr> <tr> <td></td><td></td><td></td><td></td><td>enrg</td><td>S.CLARK 3/14/91</td><td colspan="2"></td></tr> <tr> <td></td><td></td><td></td><td></td><td>chr</td><td>S.CLARK 3/14/91</td><td colspan="2"></td></tr> <tr> <td></td><td></td><td></td><td></td><td>appd</td><td>S.CLARK 3/14/91</td><td colspan="2"></td></tr> <tr> <td>sheet index</td><td>revision</td><td colspan="2">sheet</td><td colspan="4"></td></tr> </table>								mat'l. code	surface		tolerance		projection		product family		SEE NOTE 3	ISO 1302	ISO 406	ISO 1101			HPC		ltr	ecm	no	ldr	tolerances unless otherwise specified		title		K				angles	.XX±.01/.3	4 ROW VERTICAL HEADER						linear	.XXX±.005/.13	W/PRESS-FIT PINS, 2 G.P.						0'±2'	.XXX±.0020/.05	dwg no 50011 sheet 5 of 7 size A3						dr	D.SHEAFFER 3/14/91	type Product Customer Drawing						enrg	S.CLARK 3/14/91							chr	S.CLARK 3/14/91							appd	S.CLARK 3/14/91			sheet index	revision	sheet					
ITEM KEY	QTY.	MATING LENGTH	TAIL LENGTH																																																																																																																	
A	410	.200/5.08	.177/4.50																																																																																																																	
B	2	.240/6.10	.177/4.50																																																																																																																	
X	128	N/A	N/A																																																																																																																	
mat'l. code	surface		tolerance		projection		product family																																																																																																													
SEE NOTE 3	ISO 1302	ISO 406	ISO 1101			HPC																																																																																																														
ltr	ecm	no	ldr	tolerances unless otherwise specified		title																																																																																																														
K				angles	.XX±.01/.3	4 ROW VERTICAL HEADER																																																																																																														
				linear	.XXX±.005/.13	W/PRESS-FIT PINS, 2 G.P.																																																																																																														
				0'±2'	.XXX±.0020/.05	dwg no 50011 sheet 5 of 7 size A3																																																																																																														
				dr	D.SHEAFFER 3/14/91	type Product Customer Drawing																																																																																																														
				enrg	S.CLARK 3/14/91																																																																																																															
				chr	S.CLARK 3/14/91																																																																																																															
				appd	S.CLARK 3/14/91																																																																																																															
sheet index	revision	sheet																																																																																																																		

PRODUCT NUMBER  
SEE TABLE

SELECT LOAD (50011-XX011 AND 50011-XX011F ONLY)



SPECIAL NOTES FOR -XX011 AND -XX011LF ONLY:

- ALL POSITIONS ARE LOADED WITH "A", EXCEPT AS SHOWN.
- COLUMN 1 ROW A IS DESIGNATED AS SIGNAL PIN 1, AS VIEWED FROM THE MATING FACE.
- SIGNAL DATA FOR 50011-XX011 AND 50011-XX011LF:  
 SIZE 4 X 135  
 TOTAL NO. OF POSITIONS - 540  
 NO. OF POSITIONS LOADED - 540

ITEM KEY	QTY.	MATING LENGTH	TAIL LENGTH
A	492	.200/5.08	.177/4.50
B	48	.220/5.58	.533/13.54

mat'l. code		surface	tolerance	projection	product family
SEE NOTE 3		ISO 1302	ISO 406 ISO 1101		HPC
ltr	ecn	no	ldr	date	title
K					4 ROW VERTICAL HEADER W/PRESS-FIT PINS, 2 G.P.
		angles	linear	tolerances unless otherwise specified	INCH/MM
		0°±2'	.XX±.01/.3	.XXX±.005/.13	scale 1:1
dr	D.SHEAFFER		3/14/91		
enr	S.CLARK		3/14/91	dwg no 50011 sheet 6 of 7 size A3	
chr	S.CLARK		3/14/91	type Product Customer Drawing	
appd	S.CLARK		3/14/91		
sheet index	revision sheet				

PRODUCT NUMBER	NUMBER OF POSITIONS SEE NOTE 2	MATING LENGTH	TAIL LENGTH ±.015/0.38	TERMINAL PLATING
50011-1Y1YA	YYY	.220[5.59]	.177/4.50	30µ"/76µ GOLD
50011-1Y1YC	YYY		.533/13.54	30µ"/76µ GOLD
50011-1Y1YD	YYY		.733/18.62	30µ"/76µ GOLD
50011-1Y1YG	YYY		.250/6.35	30µ"/76µ GOLD
50011-1Y1YL	YYY		.188/4.78	30µ"/76µ GOLD
50011-1Y1YP	YYY		.470/11.94	30µ"/76µ GOLD
50011-3Y1YA	YYY		.177/4.50	50µ"/1.27µ GOLD
50011-3Y1YC	YYY		.533/13.54	50µ"/1.27µ GOLD
50011-3Y1YD	YYY		.733/18.62	50µ"/1.27µ GOLD
50011-3Y1YG	YYY		.250/6.35	50µ"/1.27µ GOLD
50011-3Y1YL	YYY		.188/4.78	50µ"/1.27µ GOLD
50011-3Y1YP	YYY		.470/11.94	50µ"/1.27µ GOLD
50011-5Y1YA	YYY		.177/4.50	30µ"/76µ GXT
50011-5Y1YALF	YYY		.177/4.50	30µ"/76µ GXT
50011-5Y1YC	YYY		.533/13.54	30µ"/76µ GXT
50011-5Y1YCLF	YYY		.533/13.54	30µ"/76µ GXT
50011-5Y1YD	YYY		.733/18.62	30µ"/76µ GXT
50011-5Y1YDLF	YYY		.733/18.62	30µ"/76µ GXT
50011-5Y1YG	YYY		.250/6.35	30µ"/76µ GXT
50011-5Y1YGLF	YYY		.250/6.35	30µ"/76µ GXT
50011-5Y1YL	YYY		.188/4.78	30µ"/76µ GXT
50011-5Y1YLLF	YYY		.188/4.78	30µ"/76µ GXT
50011-5Y1YP	YYY		.470/11.94	30µ"/76µ GXT
50011-5Y1YPLF	YYY	.220[5.59]	.470/11.94	30µ"/76µ GXT
50011-XX005	540	SEE SHEET 3	SEE SHEET 3	30µ"/76µ GXT
50011-XX005LF	540	SEE SHEET 3	SEE SHEET 3	30µ"/76µ GXT
50011-XX007	540	SEE SHEET 4	SEE SHEET 4	30µ"/76µ GXT
50011-XX007LF	540	SEE SHEET 4	SEE SHEET 4	30µ"/76µ GXT
50011-XX008	540	SEE SHEET 5	SEE SHEET 5	30µ"/76µ GXT
50011-XX008LF	540	SEE SHEET 5	SEE SHEET 5	30µ"/76µ GXT
50011-XX011	540	SEE SHEET 6	SEE SHEET 6	30µ"/76µ GXT
50011-XX011LF	540	SEE SHEET 6	SEE SHEET 6	30µ"/76µ GXT

mat'l. code	surface	tolerance	projection	product family
SEE NOTE 3	ISO 1302 <input checked="" type="checkbox"/>	ISO 406 <input type="checkbox"/>	ISO 1101 <input type="checkbox"/>	HPC
ltr	ecn	no	dr	date
K				
	angles	linear	tolerances unless otherwise specified	
			.XX±.01/.3	
			.XXX±.005/.13	
	0°±2'		.XXXX±.0020/.05	
dr	D.SHEAFFER	3/14/91	scale	1:1
enr	S.CLARK	3/14/91	FCJ	
chr	S.CLARK	3/14/91		
appd	S.CLARK	3/14/91		
sheet index	revision sheet			

title  
4 ROW VERTICAL HEADER  
W/PRESS-FIT PINS, 2 G.P.  
dwg no 50011 sheet 7 of 7 size A3  
type Product Customer Drawing