

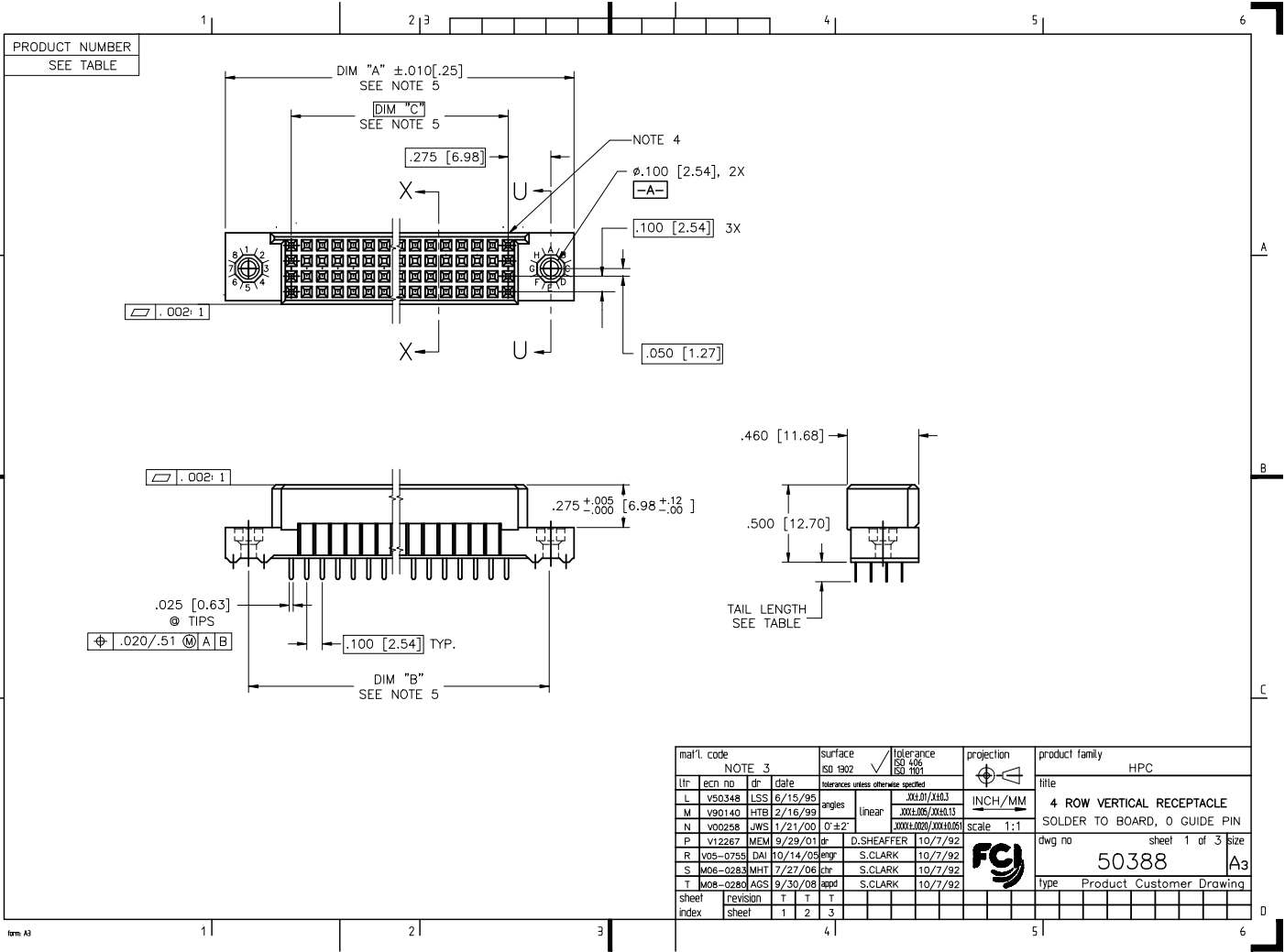
## Excellent Integrated System Limited

Stocking Distributor

Click to view price, real time Inventory, Delivery & Lifecycle Information:

[FCI](#)  
[50388-1200ELF](#)

For any questions, you can email us directly:  
[sales@integrated-circuit.com](mailto:sales@integrated-circuit.com)



PRODUCT NUMBER  
SEE TABLE

NOTES:

①. PRODUCT NUMBERING CODE:  
 50388 - X YYY Z LF  
 LEAD FREE (OPTIONAL)  
 TAIL LENGTH SEE TABLE  
 NO. OF POSITIONS SEE NOTE 2  
 PLATING SEE TABLE  
 BASE NUMBER

PRODUCT NUMBERING CODE FOR  
 SELECT LEAD PARTS:  
 50388 - XX YYY  
 LEAD FREE (OPTIONAL)  
 SEQUENCE NUMBER  
 ALWAYS XX  
 BASE NUMBER

②. THIS PRODUCT IS CONFIGURED IN SIZES OF  
 10 THRU 80 COLUMNS IN INCREMENTS OF ONE.  
 i.e.: 10,11,12,13,.....79,80.

③. HOUSING MATERIAL: GLASS AND MINERAL FILLED  
 HIGH TEMP. THERMOPLASTIC. FLAME RETARDANT  
 PER UL94V-0. COLOR: BLACK.  
 CONTACT MATERIAL: BeCu

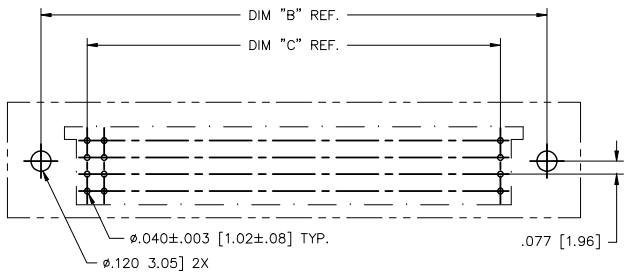
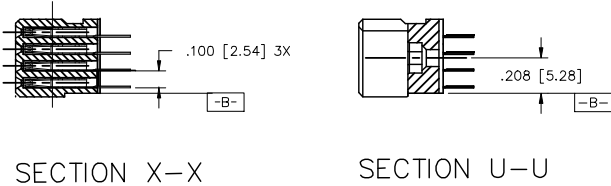
④. MANUFACTURE'S NAME, P/N AND LOT CODE TO APPEAR  
 ON THIS SURFACE AS PER BUS-12-108.

⑤. LENGTH FORMULAS  
 DIM A = .100/2.54 X NO. OF COLUMNS + .75/19.1  
 DIM B = .100/2.54 X NO. OF COLUMNS + .45/11.4  
 DIM C = .100/2.54 X NO. OF COLUMNS - .10/2.5

6. THIS PRODUCT (WITH "LF" SUFFIX) MEETS EUROPEAN  
 UNION DIRECTIVES AND OTHER COUNTRY REGULATIONS  
 AS DESCRIBED IN GS-22-008.

7. THIS HOUSING WILL WITHSTAND EXPOSURE TO 260° C PEAK  
 TEMPERATURE FOR 10-30 SECONDS IN A CONVECTION,  
 INFRA-RED OR VAPOR PHASE REFLOW OVEN.

⑧. PLATING OPTION:  
 MAY BE EITHER GOLD OR GXT PLATED AT MANUFACTURER'S OPTION.



RECOMMENDED PCB LAYOUT  
 (ALL HOLES LOCATED ON .100/2.54 GRID  
 UNLESS OTHERWISE SPECIFIED)

mat'l. code		surface	tolerance	projection	product family
NOTE 3		ISO 1902	ISO 406 ISO 1101		HPC
tr	ecm no	dr	date	INCH/MM	title
T				1/16/03 1/16/03	4 ROW VERTICAL RECEPTACLE
				0±.2'	SOLDER TO BOARD, 0 GUIDE PIN
				linear	scale 1:1
				angles	
				0±2'	
				dr	
				D.SHEAFFER	10/7/92
				engr	S.CLARK
				10/7/92	
				chr	S.CLARK
				10/7/92	
				appd	S.CLARK
				10/7/92	
sheet	revision				
index	sheet				

PRODUCT NUMBER	NUMBER OF POSITIONS SEE NOTE 2	TAIL LENGTH	TAIL PLATING	CONTACT PLATING NOTE 8
50388 -1YYYE	YYY	.125±.010/3.18±0.25	TIN LEAD	30u"/.76u Au
50388 -1YYYF	YYY	.145±.010/3.68±0.25	TIN LEAD	30u"/.76u Au
50388 -1YYYH	YYY	.180±.010/4.57±0.25	TIN LEAD	30u"/.76u Au
50388 -1YYYZ	YYY	.220±.010/5.59±0.25	TIN LEAD	30u"/.76u Au
50388 -3YYYE	YYY	.125±.010/3.18±0.25	TIN LEAD	50u"/1.27u Au
50388 -3YYYF	YYY	.145±.010/3.68±0.25	TIN LEAD	50u"/1.27u Au
50388 -3YYYH	YYY	.180±.010/4.57±0.25	TIN LEAD	50u"/1.27u Au
50388 -3YYYZ	YYY	.220±.010/5.59±0.25	TIN LEAD	50u"/1.27u Au
50388 -5YYYE	YYY	.125±.010/3.18±0.25	TIN LEAD	30u"/.76u GXT
50388 -5YYYELF	YYY	.125±.010/3.18±0.25	TIN	30u"/.76u GXT
50388 -5YYYF	YYY	.145±.010/3.68±0.25	TIN LEAD	30u"/.76u GXT
50388 -5YYYFLF	YYY	.145±.010/3.68±0.25	TIN	30u"/.76u GXT
50388 -5YYYH	YYY	.180±.010/4.57±0.25	TIN LEAD	30u"/.76u GXT
50388 -5YYYHLF	YYY	.180±.010/4.57±0.25	TIN	30u"/.76u GXT
50388 -5YYYZ	YYY	.220±.010/5.59±0.25	TIN LEAD	30u"/.76u GXT
50388 -5YYYZLF	YYY	.220±.010/5.59±0.25	TIN	30u"/.76u GXT



Copyright FCI

mat'l. code		surface		tolerance		projection		product family	
NOTE 3		ISO 1902		ISO 406 ISO 1101				HPC	
tr	ecm no	dr	date	tolerances unless otherwise specified		INCH/MM		title	
T				angles	linear	0.0125/0.0013 0.0001/0.00006		4 ROW VERTICAL RECEPTACLE	
				0±2'		scale 1:1		SOLDER TO BOARD, 0 GUIDE PIN	
		dr	D.SHEAFFER	10/7/92			dwg no		
		enrg	S.CLARK	10/7/92			sheet 3 of 3 size		
		chr	S.CLARK	10/7/92			50388		
		appd	S.CLARK	10/7/92			A3		
sheet index		revision sheet				Type		Product Customer Drawing	