

Excellent Integrated System Limited

Stocking Distributor

Click to view price, real time Inventory, Delivery & Lifecycle Information:

[FCI](#)

[51710-036LF](#)

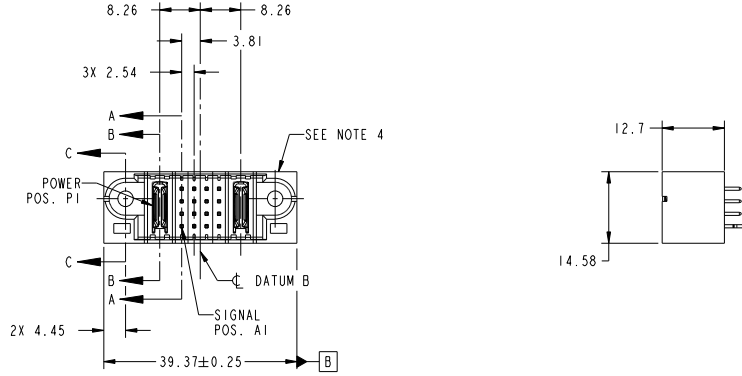
For any questions, you can email us directly:

sales@integrated-circuit.com

Tous droits strictement réservés. Reproduction ou communication à des tiers interdite sous quelque forme que ce soit sans autorisation écrite du propriétaire. Propriété de FCI. Droits de reproduction FCI.

All rights strictly reserved. Reproduction or issue to third parties in any form whatever is not permitted without written authority from the proprietor. Property of FCI. Copyright FCI.

PRODUCT NO.	ROWS	P O W E R S I G N A L P O W E R									
		E1	P1	1	2	3	4	P2	E2		
51710-036-- NOTE 3	D C B A										



CODE	DIM "M" MATING LENGTH	CONTACT TYPE
PA	[N/A]	POWER
E	[6.86]	SIGNAL
HA	[N/A]	HOLD-DOWN
H	[5.59]	SIGNAL

mat'l code				tolerances unless otherwise specified		CUSTOMER		FCI	
ltr	ecm no.	dr	date	0.X ±0.5		COPY		www.fciconnect.com	
A	BD09-0305	JW	09/16/09	0.XX ±0.25		projection		title	
				0.XXX ±0.1				IP + 16S + IP	
				angles				VERTICAL SOLDER HEADER	
				dr	JULIA WANG	09/14/09	product family		PwrBlade
				enrg	JULIA WANG	09/14/09	size		213
				chr	PM ZHENG	09/14/09	dwg no		51710-036
				oppd	JOSEPH HSIA	09/14/09	scale		1 of 4
sheet index	revision sheet	A	A	A	A	A	code		22526
1	2	3	4						

Tous droits strictement réservés. Reproduction ou communication à des tiers interdite sous quelque forme que ce soit sans autorisation écrite du propriétaire. Propriété de FCI. Droits de reproduction FCI.

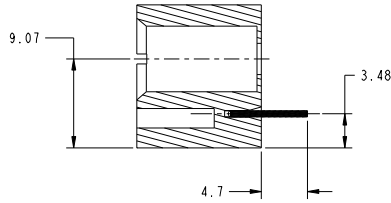
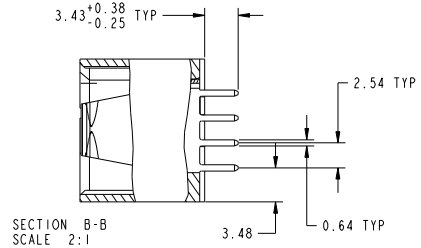
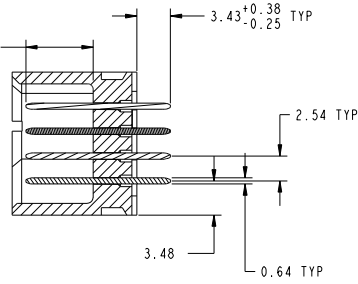
All rights strictly reserved. Reproduction or issue to third parties in any form whatever is not permitted without written authority from the proprietor. Property of FCI. Copyright FCI.



PRODUCT NUMBER
51710-036 _ _
NOTE 3

DIM "M" ±0.25

SECTION A-A
SCALE 2:1



SECTION C-C
SCALE 2:1

mat'l code				tolerances unless otherwise specified		CUSTOMER		FCI	
lfr	ecm no.	dr	date	linear	0.X ±0.5	COPY	www.fciconnect.com		
A					0.XX ±0.25	projection	title		
					0.XXX ±0.1		IP + 16S + IP		
				angles	0° ±2°		VERTICAL SOLDER HEADER		
				dr	JULIA WANG 09/14/09	MM	product family PwrBlade code		
				enr	JULIA WANG 09/14/09	size	dwg no 213		
				chr	PM ZHENG 09/14/09	scale	51710-036 sheet		
				oppd	JOSEPH HSIA 09/14/09	1:1	2 of 4		
sheet index	revision sheet						cage code 22526		

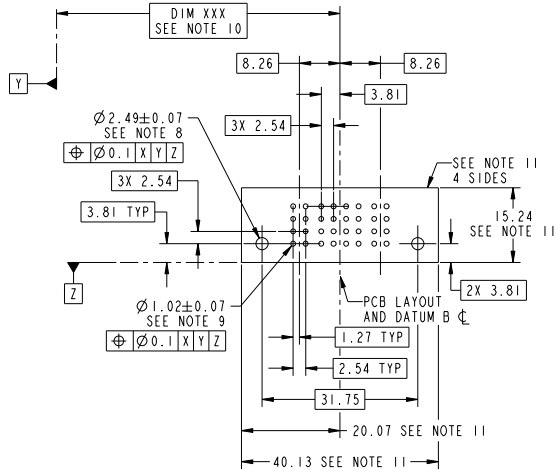
Pro/E

Tous droits strictement réservés. Reproduction ou communication à des tiers interdite sous quelque forme que ce soit sans autorisation écrite du propriétaire. Propriété de FCI. Droits de reproduction FCI.



All rights strictly reserved. Reproduction or issue to third parties in any form whatever is not permitted without written authority from the proprietor. Property of FCI. Copyright FCI.

PRODUCT NUMBER
51710-036...
NOTE 3



mat'l code				tolerances unless otherwise specified		CUSTOMER	
lfr	ecm no.	dr	date	linear	0.X ± 0.5	COPY	www.fciconnect.com
A					0.XX ± 0.25	projection	
					0.XXX ± 0.1		title
				angles	0° ± 2°	MM	IP + 16S + 1P
		dr	JULIA WANG	09/14/09		scale	VERTICAL SOLDER HEADER
		enrg	JULIA WANG	09/14/09		1:1	product family
		chr	PM ZHENG	09/14/09			PwrBlade
		oppd	JOSEPH HSIA	09/14/09			code
sheet index	revision sheet						size
							dwg no
							51710-036
							213 sheet
							3 of 4
							code
							22526

Tous droits strictement réservés. Reproduction ou communication à des tiers interdite sous quelque forme que ce soit sans autorisation écrite du propriétaire. Propriété de C.FCI. Droits de reproduction FCI.

All rights strictly reserved. Reproduction or issue to third parties in any form whatever is not permitted without written authority from the proprietor. Property of FCI. Copyright FCI.

PRODUCT NUMBER
51710-036_
NOTE 3

NOTES:

1. DIMENSIONS AND TOLERANCES ARE IN ACCORDANCE WITH ASME Y14.5M, 1994 UNLESS OTHERWISE SPECIFIED.

CONNECTOR NOTES:

- ② HOUSING MATERIAL: UL 94 V-0 GLASS FILLED HIGH-TEMP THERMOPLASTIC
POWER CONTACT MATERIAL: COPPER ALLOY
SIGNAL PIN MATERIAL: COPPER ALLOY
- 3. PLATING:
SEE ITEM 1 & 2 IN PRINT 10064183 FOR PLATING SPEC. OF 51710-036 ,51710-036LF RESPECTIVELY.

④ MANUFACTURER'S NAME, P/N, AND DATE CODE TO APPEAR ON THIS SURFACE.

5. PRODUCT SPECIFICATION GS-12-149.
APPLICATION SPECIFICATION BUS-20-067.

6. PACKAGED IN TRAYS.

PCB NOTES:

- 7. ALL HOLE DIAMETERS ARE FINISHED HOLE SIZE.
- 8. MOUNTING HOLES, WHERE APPLICABLE, ARE UNPLATED.

⑨ $\varnothing 1.151 \pm 0.025$ DRILLED HOLES PLATED WITH 0.008 MIN SnPb OR Sn OVER .001 (.03) TO 0.08 Cu PLATING TO ACHIEVE $\varnothing 1.02 \pm .07$ HOLE.

⑩ "DIM XXX" TO BE DETERMINED BY THE CUSTOMER.

⑪ CONNECTOR KEEP-OUT ZONE.

mat'l code				tolerances unless otherwise specified		CUSTOMER		FCI	
ltr	ecm no.	dr	date			COPY		www.fciconnect.com	
A				linear	0.X ± 0.5	projection		title	
					0.XX ± 0.25			IP + 16S + IP	
				angles	0.XXX ± 0.1			VERTICAL SOLDER HEADER	
					0° ± 2°			product family PwrBlade code	
				dr	JULIA WANG 09/14/09	scale		size	dwg no
				enrg	JULIA WANG 09/14/09	1:1	A	51710-036	213
				chr	PM ZHENG 09/14/09				sheet
				oppd	JOSEPH HSIA 09/14/09				4 of 4
sheet index	revision sheet								

Pro/E

cage code 22526