

Excellent Integrated System Limited

Stocking Distributor

Click to view price, real time Inventory, Delivery & Lifecycle Information:

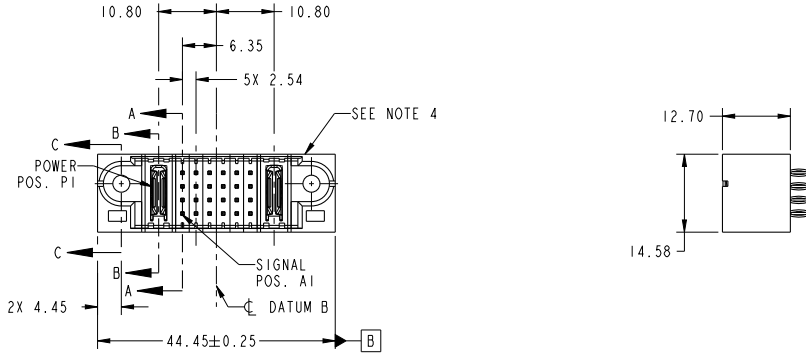
[FCI](#)

[51710-054LF](#)

For any questions, you can email us directly:

sales@integrated-circuit.com

PRODUCT NO.	ROWS	POWER		SIGNAL								POWER			
		E1	P1	1	2	3	4	5	6	7	8	9	10	P2	E2
51710-054-- NOTE ③	D C B A		PC	K	G	G	G	G	G	G	G	G	G	PC	



CODE	DIM "M" MATING LENGTH	CONTACT TYPE
PC	[N/A]	POWER
G	[6.86]	SIGNAL
K	[5.59]	SIGNAL

spec ref	See Notes		dr	X Q Wang	2012/08/02	projection		MM	size	A4	scale	1:1
tolerance std	TOLERANCES UNLESS OTHERWISE SPECIFIED		eng	X Q Wang	2012/08/09	product family	PwrBlade	ecn no	-	rel level	Released	rev
See Notes			chr	-	-							
surface	linear	0.X ±0.50	appr	Pei-Ming Zheng	2012/08/09	IP + 24S + IP		dwg no	51710-054	A	sheet 1 of 4	
		0.XX ±0.25			VERTICAL PRESS-FIT HEADER							
		0.XXX ±0.10	www.fci.com		cat. no.	&model_name	Product - Customer Drw					
	angular	0° ±2°										

Print File - REV C - 2009-08-09

1

2

3

PDS: Rev :A

STATUS:Released

Printed: Aug 09, 2012

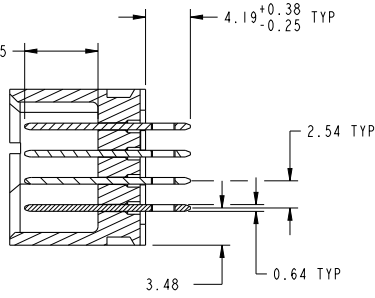


Copyright FCI.

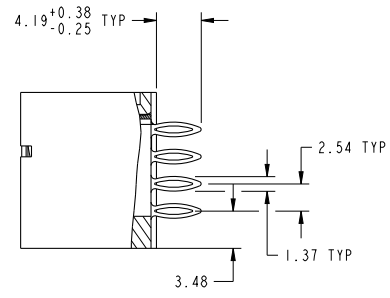
PRODUCT NUMBER

51710-054--
NOTE 3

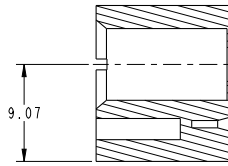
DIM "M" ±0.25



SECTION A-A
SCALE 2:1



SECTION B-B
SCALE 2:1



SECTION C-C
SCALE 2:1

dr	X Q Wang	2012/08/02	projection	MM	size	A4	scale	1:1	
eng	X Q Wang	2012/08/09			ecn no	-	rel level		
chr	-	-			product family	PwrBlade	Released		
appr	Pei-Ming Zheng	2012/08/09				title	IP + 24S + IP	dwg no	51710-054
www.fci.com			cat. no.			&model_name			Product - Customer Drw
									sheet 2 of 4

Print File : REV C - 2009-08-09

PDS: Rev :A

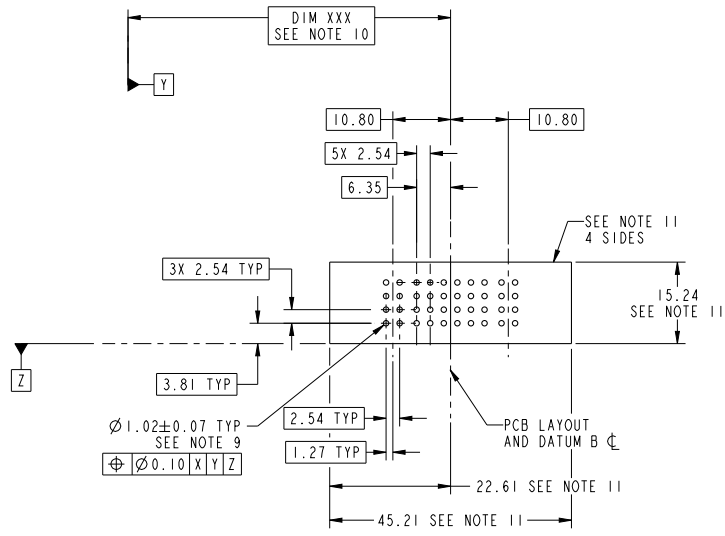
STATUS:Released

Printed: Aug 09, 2012



Copyright FCI.

PRODUCT NUMBER
51710-054--
NOTE 3



RECOMMENDED PCB LAYOUT

dr	X Q Wang	2012/08/02	projection	MM	size	A4	scale	1:1
eng	X Q Wang	2012/08/09			ecn no	-	rel level	
chr	-	-			product family	PwrBlade	Released	
appr	Pei-Ming Zheng	2012/08/09				IP + 24S + IP		rev
www.fci.com			VERTICAL PRESS-FIT HEADER			51710-054		A
cat. no.			&model_name			Product - Customer Drw		sheet 3 of 4

Print File - REV C - 2009-08-09

PDS: Rev :A

STATUS:Released

Printed: Aug 09, 2012



Copyright FCI.

PRODUCT NUMBER
51710-054...
NOTE 3

NOTES:

1. DIMENSIONS AND TOLERANCES ARE IN ACCORDANCE WITH ASME Y14.5M, 1994 UNLESS OTHERWISE SPECIFIED.

CONNECTOR NOTES:

- ② HOUSING MATERIAL: UL 94 V-0 GLASS FILLED HIGH-TEMP THERMOPLASTIC
POWER CONTACT MATERIAL: COPPER ALLOY
SIGNAL PIN MATERIAL: COPPER ALLOY
 - 3. SEE ITEM 3 & 4 IN PRINT 10064183 FOR PLATING SPEC OF 51710-054 AND 51710-054LF RESPECTIVELY.
 - ④ MANUFACTURER'S NAME, DATE CODE AND OPTIONAL P/N TO APPEAR ON THIS SURFACE. THE MARK CAN BE OMITTED IF THERE IS NOT ENOUGH SPACE ON THIS SURFACE.
 - 5. PRODUCT SPECIFICATION GS-12-149.
APPLICATION SPECIFICATION BUS-20-067.
 - 6. PACKAGED IN TRAYS.
- PCB NOTES:
- 7. ALL HOLE DIAMETERS ARE FINISHED HOLE SIZE.
 - 8. MOUNTING HOLES, WHERE APPLICABLE, ARE UNPLATED.
 - ⑨ $\varnothing 1.151 \pm 0.025$ DRILLED HOLES PLATED WITH 0.008 MIN SnPb OR Sn OVER .001 [0.03] TO 0.08 Cu PLATING TO ACHIEVE $\varnothing 1.02 \pm 0.07$ HOLE.
 - ⑩ "DIM XXX" TO BE DETERMINED BY THE CUSTOMER.
 - ⑪ CONNECTOR KEEP-OUT ZONE.
 - 12. FOR PRESS FIT APPLICATION USE FCI CAM TOOL 430169-XXX.



Copyright FCI.

dr	X Q Wang	2012/08/02	projection		MM	size	A4	scale	1:1
eng	X Q Wang	2012/08/09	chr			-	ecn no	-	
appr	Pei-Ming Zheng	2012/08/09	product family	PwrBlade		rel level	Released		
			title IP + 24S + IP VERTICAL PRESS-FIT HEADER			dwg no 51710-054	rev A		
www.fci.com			cat. no.	&model_name	Product - Customer Drw		sheet 4 of 4		

Print File - REV C - 2009-08-09