

Excellent Integrated System Limited

Stocking Distributor

Click to view price, real time Inventory, Delivery & Lifecycle Information:

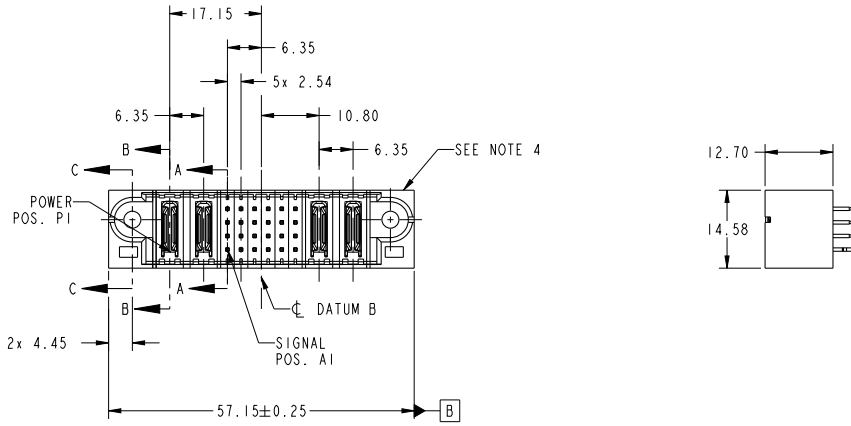
[FCI](#)

[51710-067LF](#)

For any questions, you can email us directly:

sales@integrated-circuit.com

PRODUCT NO.	ROWS	POWER			SIGNAL				POWER			
		E1	P1	P2	1	2	3	4	5	6	P3	P4
51710-067-- NOTE ③	D C B A											



CODE	DIM "M" MATING LENGTH	CONTACT TYPE
PA	[N/A]	POWER
E	[6.86]	SIGNAL
H	[5.59]	SIGNAL
HA	[N/A]	HOLD-DOWN

spec ref	See Notes		dr	Ruan MT	2014/06/18	projection		size	A4	scale	1:1
tolerance std	TOLERANCES UNLESS OTHERWISE SPECIFIED		eng	De-Ming Lu	2014/07/03		product family	PwrBlade	ecn no	rel level	Released
See Notes			chr	-	-						
surface	linear	0.X ±0.50	appr	Pei-Ming Zheng	2014/07/03	2P + 24S + 2P		www.fci.com	cat. no.	&model_name	Product - Customer Drw
		0.XX ±0.25				VERTICAL SOLDER HEADER					
	angular	0° ±2°							sheet 1 of 4		

Prod File - REV C - 2009-08-09

1

2

3

PDS: Rev :A

STATUS:Released

Printed: Jul 04, 2014

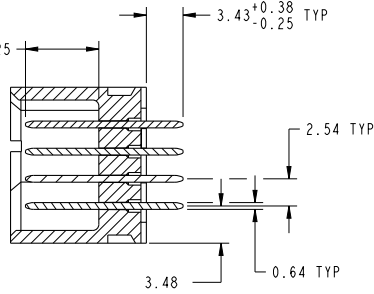


Copyright FCI.

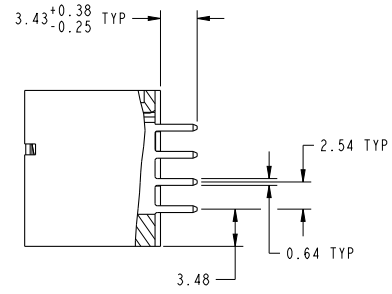
PRODUCT NUMBER

51710-067--
NOTE 3

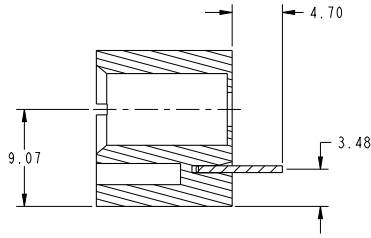
DIM "M" ±0.25



SECTION A-A
SCALE 2:1



SECTION B-B
SCALE 2:1



SECTION C-C
SCALE 2:1

dr	Ruan MT	2014/06/18	projection	MM	size	A4	scale	1:1
eng	De-Ming Lu	2014/07/03			ecn no	-	rel level	
chr	-	-			product family	PwrBlade	Released	
appr	Pei-Ming Zheng	2014/07/03				part no	2P + 24S + 2P	rev
www.fci.com						cat. no.	51710-067	A
						&model_name	Product - Customer Drw	sheet 2 of 4

Print File : REV C - 2009-08-09

PDS: Rev :A

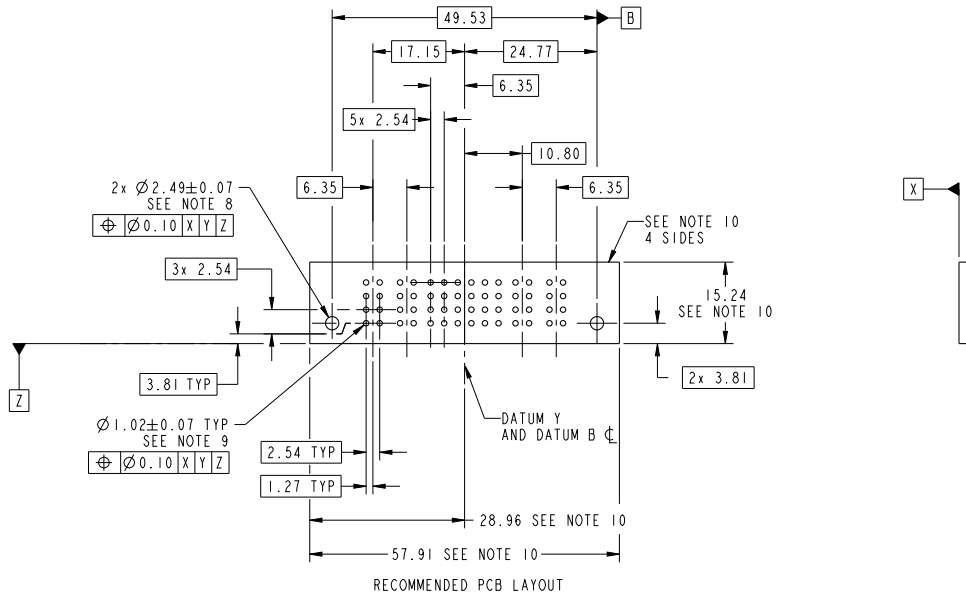
STATUS:Released

Printed: Jul 04, 2014



Copyright FCI.

PRODUCT NUMBER
51710-067...
NOTE 3



RECOMMENDED PCB LAYOUT

dr	Ruan MT	2014/06/18	projection	MM	size	A4	scale	1:1
eng	De-Ming Lu	2014/07/03			ecn no	-		
chr	-	-	product family	PwrBlade	rel level	Released		
appr	Pei-Ming Zheng	2014/07/03	www.fci.com		2P + 24S + 2P	VERTICAL SOLDER HEADER	cat. no.	&model_name
					Product - Customer Drw	51710-067	rev	A
					Product - Customer Drw	51710-067	rev	A

Print File - REV C - 2009-08-09

PDS: Rev :A

STATUS:Released

Printed: Jul 04, 2014

PRODUCT NUMBER		51710-067..		NOTE 3	
NOTES:					
1. DIMENSIONS AND TOLERANCES ARE IN ACCORDANCE WITH ASME Y14.5M, 1994 UNLESS OTHERWISE SPECIFIED.					
CONNECTOR NOTES:					
② HOUSING MATERIAL: UL 94 V-0 GLASS FILLED HIGH-TEMP THERMOPLASTIC POWER CONTACT MATERIAL: COPPER ALLOY SIGNAL PIN MATERIAL: COPPER ALLOY					
3. SEE ITEM 1 & 2 IN PRINT 10064183 FOR PLATING SPEC OF 51710-067 AND 51710-067LF RESPECTIVELY.					
④ MANUFACTURER'S NAME, DATE CODE AND OPTIONAL P/N TO APPEAR ON THIS SURFACE. THE MARK CAN BE OMITTED IF THERE IS NOT ENOUGH SPACE ON THIS SURFACE.					
5. PRODUCT SPECIFICATION GS-12-149. APPLICATION SPECIFICATION BUS-20-067.					
6. PACKAGED IN TRAYS.					
PCB NOTES:					
7. ALL HOLE DIAMETERS ARE FINISHED HOLE SIZE.					
8. MOUNTING HOLES, WHERE APPLICABLE, ARE UNPLATED.					
⑨ $\varnothing 1.151 \pm 0.025$ DRILLED HOLES PLATED WITH 0.008 MIN SnPb OR Sn OVER .001 [0.03] TO 0.08 Cu PLATING TO ACHIEVE $\varnothing 1.02 \pm 0.07$ HOLE.					
⑩ CONNECTOR KEEP-OUT ZONE.					

dr	Ruan MT	2014/06/18	projection	MM	size	A4	scale	1:1	
eng	De-Ming Lu	2014/07/03		← →	ecn no	-			
chr	-	-			product family	PwrBlade	rel level	Released	
appr	Pei-Ming Zheng	2014/07/03				title	2P + 24S + 2P		
www.fci.com						dwg no	51710-067		
cat. no.			&model_name			Product - Customer Drw		rev	A
						sheet 4 of 4			



Copyright FCI.