

## Excellent Integrated System Limited

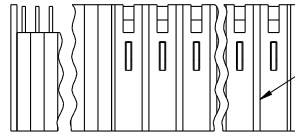
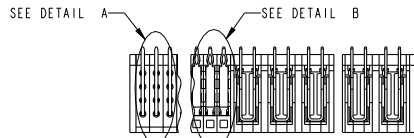
Stocking Distributor

Click to view price, real time Inventory, Delivery & Lifecycle Information:

[FCI](#)  
[51725-10000808A0LF](#)

For any questions, you can email us directly:  
[sales@integrated-circuit.com](mailto:sales@integrated-circuit.com)

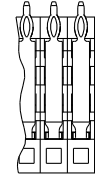
PRODUCT NUMBER
51725-A00CCDDE0...
SEE NOTE 1



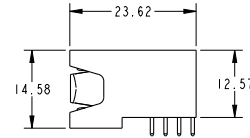
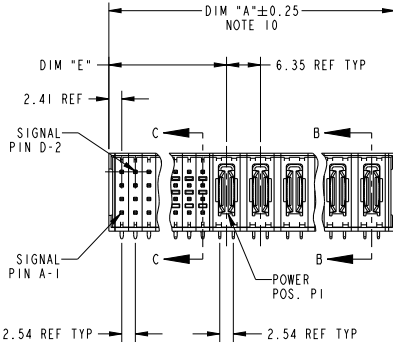
SEE NOTE 9



DETAIL A  
SCALE 2:1  
FOR SOLDER TO BOARD ONLY



DETAIL B  
SCALE 2:1  
FOR PRESS FIT ONLY



Copyright FCI.

spec ref	*	dr	w wadmin	2007/01/29	projection	MM	size	A4	scale	1:1
tolerance std	ASME Y14.5	eng	Ruan MT	2015/09/30			ec n no	ELX-DG-21593-1		
TOLERANCES UNLESS OTHERWISE SPECIFIED		chr	Fancy Zhang	2015/09/30				product family	PwrBlade	rel level
surface	linear	appr	Pei-Ming Zheng	2015/09/30	R/A HEADER W/O GUIDE PIN		cat. no.	51725	rev	M
ASME Y14.5	angular	www.fci.com			SIGNAL / POWER		Product - Customer Drw	sheet 1 of 3		

Print File : REV C - 2009-08-09

PRODUCT NUMBER
51725-A00CCDDDE0...
SEE NOTE 1

DIM	LENGTH FORMULAS (SEE NOTE 10)
DIM "A"	2.54 x (CCC/4) + 6.35 x DD + 2.29 (NOTE 10)
DIM "E"	2.54 x (CCC/4) + 4.32
DIM "F"	2.54 x (CCC/4) + 6.35 x DD + 3.05
DIM "H"	2.54 x (CCC/4) + 0.64

CONNECTOR NOTES

- ①. PRODUCT NUMBER CODE:  
51725 - A 00 CCC DD E 0 LF
- NO THIS SUFFIX: 100u"/2.54um SnPb ON PCB INTERFACE
  - ADD THIS SUFFIX: 78u"/2.00um Sn ON PCB INTERFACE
  - ALWAYS "0" (ZERO) (NOTE 8)
  - TAIL LENGTH (NOTE 7)
  - NUMBER OF RIGHT END POWER CONTACTS (NOTE 6)
  - NUMBER OF SIGNAL CONTACTS (NOTE 5)
  - ALWAYS "00" (ZERO,ZERO) (NOTE 4)
  - PLATING (NOTE 3)
  - BASE NUMBER

- ②. HOUSING MATERIAL: GLASS FILLED V-O HIGH TEMP THERMO PLASTIC.  
SIGNAL CONTACT MATERIAL: PHOS BRONZE  
POWER CONTACT MATERIAL: COPPER ALLOY

- ③. PLATING OPTION OPTIONS:  
1 = SEE PRINT 10064183 FOR PLATING SPEC OF 51725-100CCDDDE0; 51725-100CCDDDE0LF

- ④. THIS PART IS NOT AVAILABLE WITH LEFT SIDE POWER CONTACTS.

- ⑤. SIGNAL CONTACTS, 004 TO 148 AVAILABLE.

- ⑥. RIGHT END POWER CONTACTS, 01 TO 20 AVAILABLE.  
MAXIMUM OF 20 POWER CONTACTS PER CONNECTOR.

- ⚠ ⑦. TAIL LENGTH OPTIONS:  
A = 3.43 SOLDER TO BOARD  
B = 4.19 SOLDER TO BOARD  
C = 3.43 PRESS FIT  
D = 2.34 SOLDER TO BOARD

- ⑧. BOARD RETENTION IS NOT AVAILABLE WITH GUIDELESS ENDS.

- ⑨. MANUFACTURE'S NAME, P/N, AND DATE CODE TO APPEAR ON THIS SURFACE.

- ⑩. THE MAXIMUM OVERALL LENGTH (DIM A) OF A PART IS 203.2

11. PRODUCT SPECIFICATION GS-12-149  
APPLICATION SPECIFICATION BUS-20-067

12. REFERENCE 51697 FOR SELECT LOAD/FMLB WORKSHEET

PCB NOTES:

13. ALL DIMENSIONS ARE BASIC UNLESS OTHERWISE SPECIFIED.

14. ALL THROUGH HOLES ARE LOCATED WITH A TRUE POSITION OF 0.10

15. ALL HOLE DIAMETERS ARE FINISHED HOLE SIZE.

- ⑬.  $\varnothing 1.151 \pm 0.025$  DRILLED HOLES PLATED WITH 0.008 MIN SnPb or Sn OVER 0.03 TO 0.08 Cu PLATING TO ACHIEVE A  $1.02 \pm 0.07$  HOLE.

17. A ⚠ SYMBOL WILL BE NEXT TO ANY DIMENSION, VIEW, OR NOTE WHICH HAS BEEN MODIFIED WITH THE CURRENT DRAWING REVISION.

- ⚠ ⑱. CONNECTOR KEEP OUT ZONE

dr	wcadmin	2007/01/29	projection		size	A4	scale	1:1
eng	Ruan MT	2015/09/30	product family	PwrBlade	ec n no	ELX-DG-21593-1		
chr	Fancy Zhang	2015/09/30			rel level	Released		
appr	Pei-Ming Zheng	2015/09/30	R/A HEADER W/O GUIDE PIN		dwg no	51725		rev
		SIGNAL / POWER						M
www.fci.com		cat. no.	*	Product - Customer Drw		sheet 2 of 3		

Print File : REV C - 2009-08-09

Copyright FCI.

PDS: Rev :M

STATUS:Released

Printed: Sep 30, 2015

PRODUCT NUMBER
51725-A00CCDDDE0...
SEE NOTE 1

A

B

C

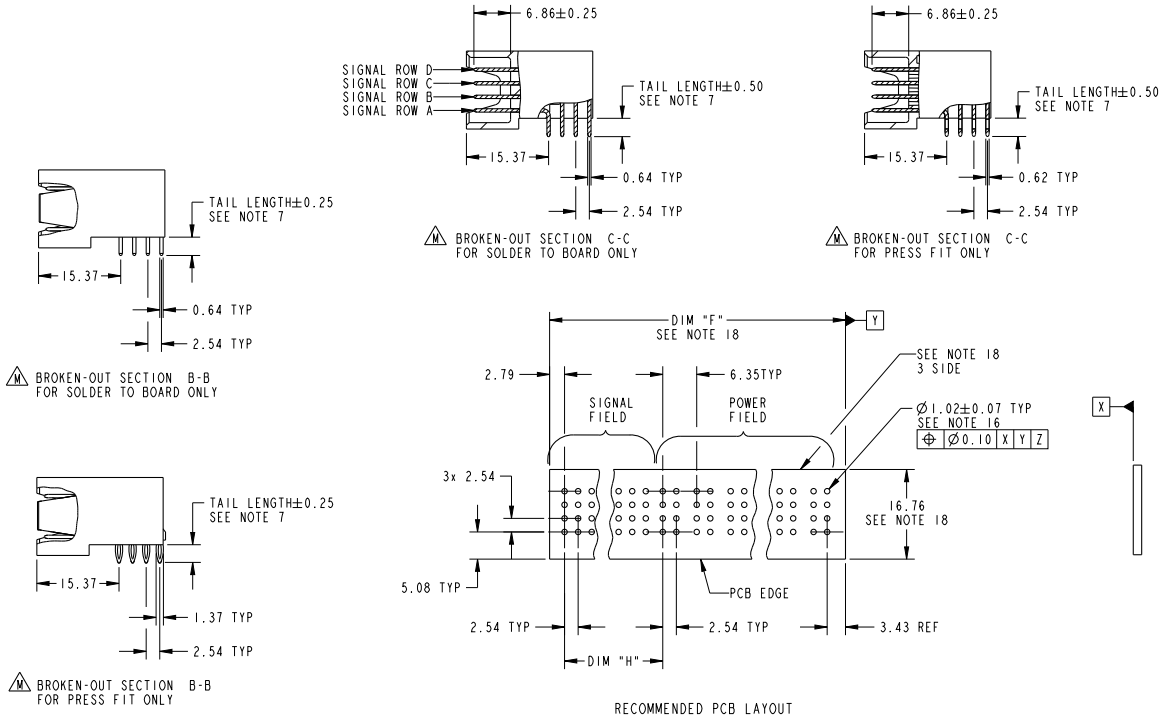
D

A

B

C

D



Copyright FCI.

dr	wcadmin	2007/01/29	projection	MM	size	A4	scale	1:1
eng	Ruan MT	2015/09/30			ec n no	ELX-DG-21593-1		
chr	Fancy Zhang	2015/09/30			rel level	Released		
appr	Pei-Ming Zheng	2015/09/30	product family	PwrBlade		rev	M	
			R/A HEADER W/O GUIDE PIN		dwg no	51725		
www.fci.com			cat. no.	*	Product - Customer Drw		sheet 3 of 3	

Part File : REV C - 2009-08-09

1

2

3

PDS: Rev :M

STATUS:Released

Printed: Sep 30, 2015