

Excellent Integrated System Limited

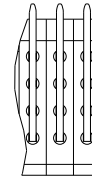
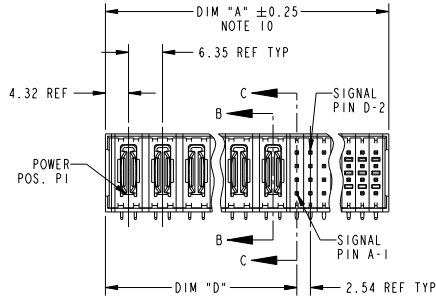
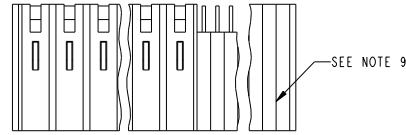
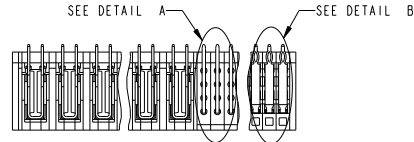
Stocking Distributor

Click to view price, real time Inventory, Delivery & Lifecycle Information:

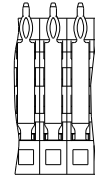
[FCI](#)
[51726-10300800A0LF](#)

For any questions, you can email us directly:
sales@integrated-circuit.com

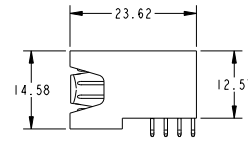
PRODUCT NUMBER
51726-ABBCC00E0...
SEE NOTE 1



DETAIL A
SCALE 2:1
FOR SOLDER TO BOARD ONLY



DETAIL B
SCALE 2:1
FOR PRESS FIT ONLY



Copyright FCI.

spec ref	*	dr	Jerome Chen	2008/09/11	projection	MM	size	A4	scale	1:1
tolerance std	ASME Y14.5	eng	Ruan MT	2015/09/30			ecn no	ELX-DG-21593-1		
TOLERANCES UNLESS OTHERWISE SPECIFIED		chr	Fancy Zhang	2015/09/30				product family	PwrBlade	rel level
surface	linear	appr	Pei-Ming Zheng	2015/09/30			cat. no.	R/A HEADER W/O GUIDE PIN		rev
ASME Y14.5	angular	www.fci.com		POWER / SIGNAL						
	0.X	±0.5								
	0.XX	±0.25								
	0.XXX	±0.100								
	0°	±2°								
Product - Customer Drw							sheet 1 of 3			

PAGE FILE: REV C - 2009-08-09

1

2

3

PDS: Rev :N

STATUS:Released

Printed: Oct 08, 2015

PRODUCT NUMBER	DIM	LENGTH FORMULAS (SEE NOTE 10)
51726-ABBCC00E0...	DIM "A"	$6.35 \times BB + 2.54 \times (CCC/4) + 2.29$ (NOTE 10)
SEE NOTE 1	DIM "D"	$6.35 \times BB + 2.41$
	DIM "F"	$6.35 \times BB + 2.54 \times (CCC/4) + 3.05$
	DIM "G"	$6.35 \times BB - 0.64$

CONNECTOR NOTES

- ①. PRODUCT NUMBER CODE:
51726 - A BB CCC 00 E 0 LF
- NO THIS SUFFIX: 100u"/2.54um SnPb ON PCB INTERFACE
 - ADD THIS SUFFIX: 78u"/2.00um Sn ON PCB INTERFACE
 - ALWAYS "0" (ZERO)(NOTE 8)
 - TAIL LENGTH (NOTE 7)
 - ALWAYS "00" (ZERO, ZERO)(NOTE 6)
 - NUMBER OF SIGNAL CONTACTS (NOTE 5)
 - NUMBER OF LEFT END POWER CONTACTS (NOTE 4)
 - PLATING (NOTE 3)
 - BASE NUMBER

- ②. HOUSING MATERIAL: GLASS FILLED V-O HIGH TEMP THERMO PLASTIC.
SIGNAL CONTACT MATERIAL: COPPER ALLOY
POWER CONTACT MATERIAL: COPPER ALLOY
- ③. PLATING OPTION:
1 - SEE PRINT 10064183 FOR PLATING SPEC OF 51726-1BBCC00E0; 51726-1BBCC00E0LF
- ④. LEFT END POWER CONTACTS, 01 TO 20 AVAILABLE.
MAXIMUM OF 20 POWER CONTACTS PER CONNECTOR
- ⑤. SIGNAL CONTACTS, 004 TO 148 AVAILABLE.
- ⑥. THIS PART IS NOT AVAILABLE WITH RIGHT SIDE POWER CONTACTS.

- ⚠ ⑦. TAIL LENGTH:
A = 3.43 SOLDER TO BOARD
B = 4.19 SOLDER TO BOARD
C = 3.43 PRESS FIT
D = 2.34 SOLDER TO BOARD

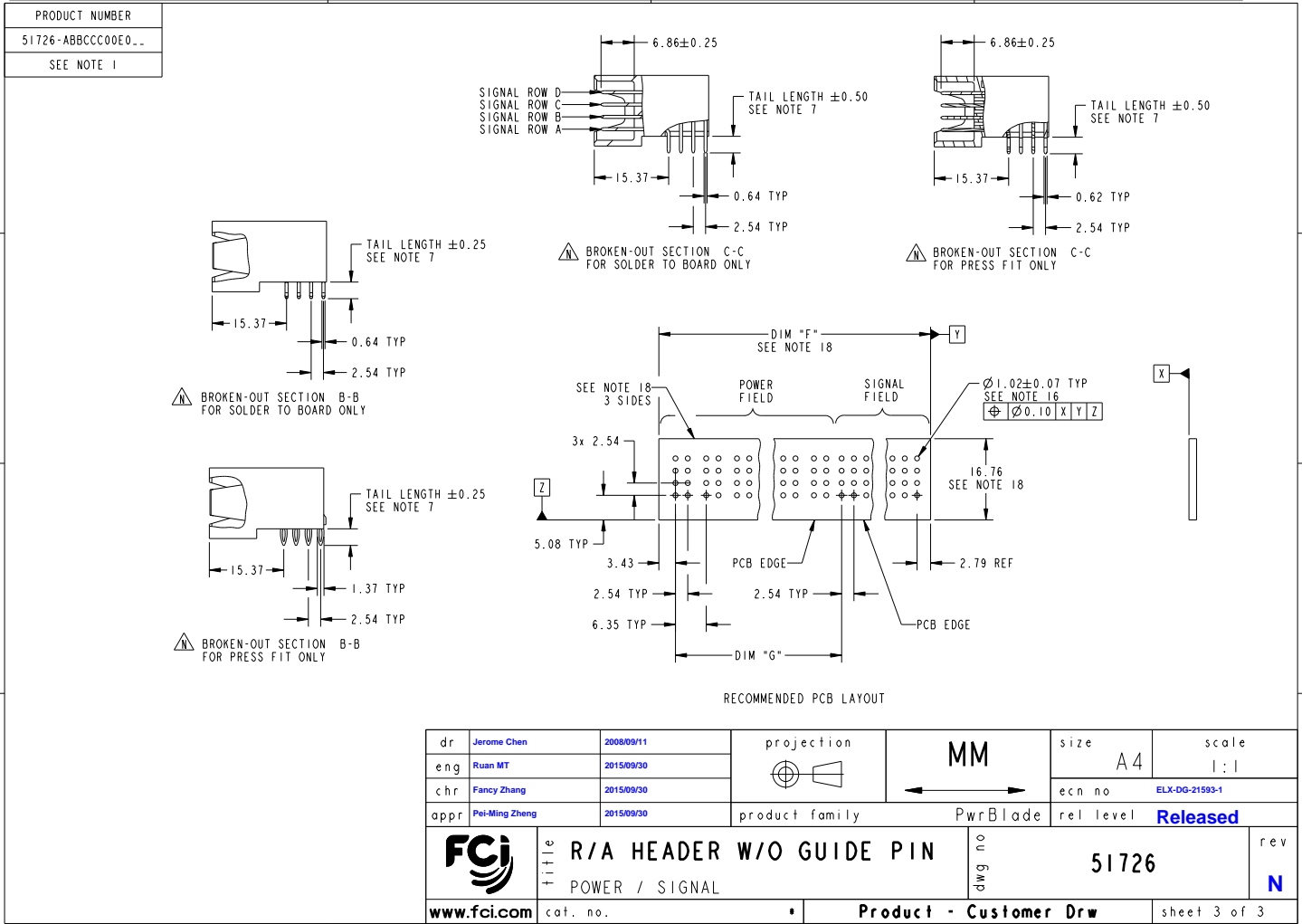
- ⑧. BOARD RETENTION IS NOT AVAILABLE WITH GUIDELESS ENDS.
- ⑨. MANUFACTURE'S NAME, P/N, AND DATE CODE TO APPEAR ON THIS SURFACE.
- ⑩. THE MAXIMUM OVERALL LENGTH (DIM A) OF A PART IS 203.2
11. PRODUCT SPECIFICATION GS-12-149
APPLICATION SPECIFICATION BUS-20-067
12. REFERENCE 51697 FOR SELECT LOAD/FMLB WORKSHEET
- PCB NOTES:
13. ALL DIMENSIONS ARE BASIC UNLESS OTHERWISE SPECIFIED.
- ⑭. ALL THROUGH HOLES ARE LOCATED WITH A TRUE POSITION OF 0.10
15. ALL HOLE DIAMETERS ARE FINISHED HOLE SIZE.
- ⑮. $\varnothing 1.151 \pm 0.025$ DRILLED HOLES PLATED WITH 0.008 MIN SnPb or Sn OVER 0.03 TO 0.08 Cu PLATING TO ACHIEVE A 1.02±0.07 HOLE.
17. ⚠ SYMBOL WILL BE NEXT TO ANY DIMENSION, VIEW, OR NOTE WHICH HAS BEEN MODIFIED WITH THE CURRENT DRAWING REVISION.
- ⚠ ⑯. CONNECTOR KEEP OUT ZONE



Copyright FCI.

dr	Jerome Chen	2008/09/11	projection	MM	size	A4	scale	1:1	
eng	Ruan MT	2015/09/30			ec n no	ELX-DG-21593-1			
chr	Fancy Zhang	2015/09/30	product family	PwrBlade	rel level	Released			
appr	Pei-Ming Zheng	2015/09/30	R/A HEADER W/O GUIDE PIN		dwg no	51726		rev	N
www.fci.com			cat. no.	Product - Customer Drw			sheet 2 of 3		

Part File - REV C - 2009-06-09



Copyright FCI.

dr	Jerome Chen	2008/09/11	projection	MM	size	A4	scale	1:1
eng	Ruan MT	2015/09/30			ec n no	ELX-DG-21593-1		
chr	Fancy Zhang	2015/09/30	product family	PwrBlade	rel level	Released		
appr	Pei-Ming Zheng	2015/09/30	www.fci.com		title	R/A HEADER W/O GUIDE PIN		rev
					POWER / SIGNAL	cat. no.	51726	N
					Product - Customer Drw	sheet	3 of 3	

Part File : REV C - 2015-08-09