

Excellent Integrated System Limited

Stocking Distributor

Click to view price, real time Inventory, Delivery & Lifecycle Information:

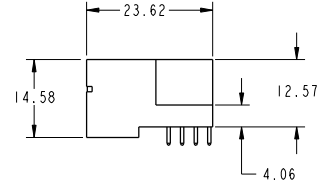
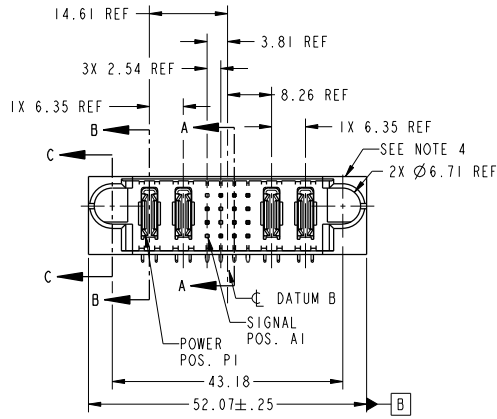
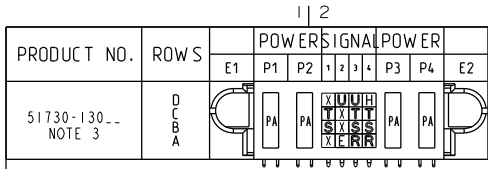
[FCI](#)
[51730-130](#)

For any questions, you can email us directly:
sales@integrated-circuit.com

Tous droits strictement réservés. Reproduction ou communication a des tiers interdite sous quelque forme que ce soit sans autorisation écrite du propriétaire. Propriété de c FCI. Droits de reproduction FCI.



All rights strictly reserved. Reproduction or issue to third parties in any form whatever is not permitted without written authority from the proprietor. Property of FCI. Copyright FCI.



CODE	DIM "M" MATING LENGTH	CONTACT TYPE
T	[6.86]	SIGNAL
U	[6.86]	SIGNAL
R	[6.86]	SIGNAL
S	[6.86]	SIGNAL
PA	[N/A]	POWER
H	[5.59]	SIGNAL
E	[5.59]	SIGNAL
X	OMITTED	OMITTED

mat'l code				SEE NOTE	tolerances unless otherwise specified	CUSTOMER	FCI
itr	ecn no.	dr	date	linear	0.X ±0.3	COPY	www.fciconnect.com
A	DG07-0018	JULIA	01/15/07	linear	0.XX ±0.13	projection	
B	DG07-0192	JULIA	04/05/07	angles	0.XXX ±0.051	MM	
				dr	JULIA WANG 01/15/07	scale	
				engr	RYAN TUAN 01/15/07	1:1	
				chr	BEER FU 01/15/07		
				appd	JOSEPH HSIA 01/15/07		
sheet index	revision sheet	B 1	B 2	B 3	B 4		

Pro/E

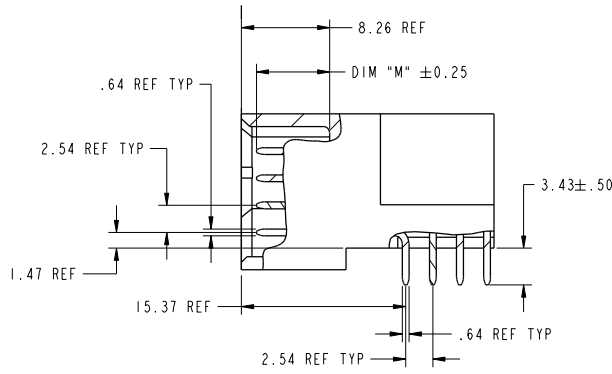
cage code 22526

Tous droits strictement réservés. Reproduction ou communication a des tiers interdite sous quelque forme que ce soit sans autorisation écrite du propriétaire. Propriété de c FCI. Droits de reproduction FCI.

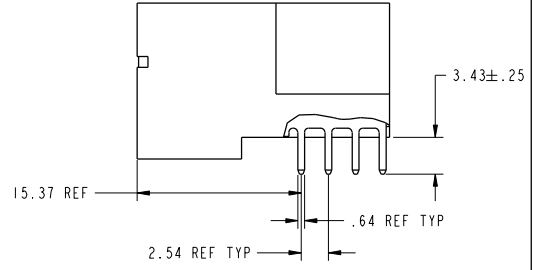


All rights strictly reserved. Reproduction or issue to third parties in any form whatever is not permitted without written authority from the proprietor. Property of FCI. Copyright FCI.

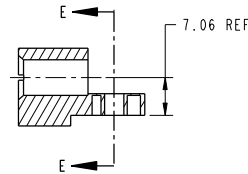
PRODUCT NUMBER
51730-130--
NOTE: 3



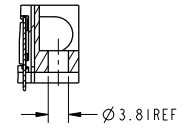
BROKEN-OUT SECTION A-A
SCALE 2:1



BROKEN-OUT SECTION B-B
SCALE 2:1



SECTION C-C



PARTIAL SECTION E-E

mat'l code		SEE NOTE		tolerances unless otherwise specified		CUSTOMER		FCI		www.fciconnect.com	
ltr	ecm no.	dr	date	linear	0.X ±0.3	projection	COPY	title	2P + 16S + 2P		
B				linear	0.XX ±0.13			RIGHT ANGLE SOLDER HEADER			
				angles	0.XXX ±0.051			product family	PwrBlade	code	213
					0° ±2°			size	dwg no	sheet	2 of 4
				dr	JULIA WANG 01/15/07			scale	1:1		
				eng	RYAN TUAN 01/15/07						
				chr	BEER FU 01/15/07						
				appd	JOSEPH HSIA 01/15/07						
sheet index	revision sheet										

Pro/E

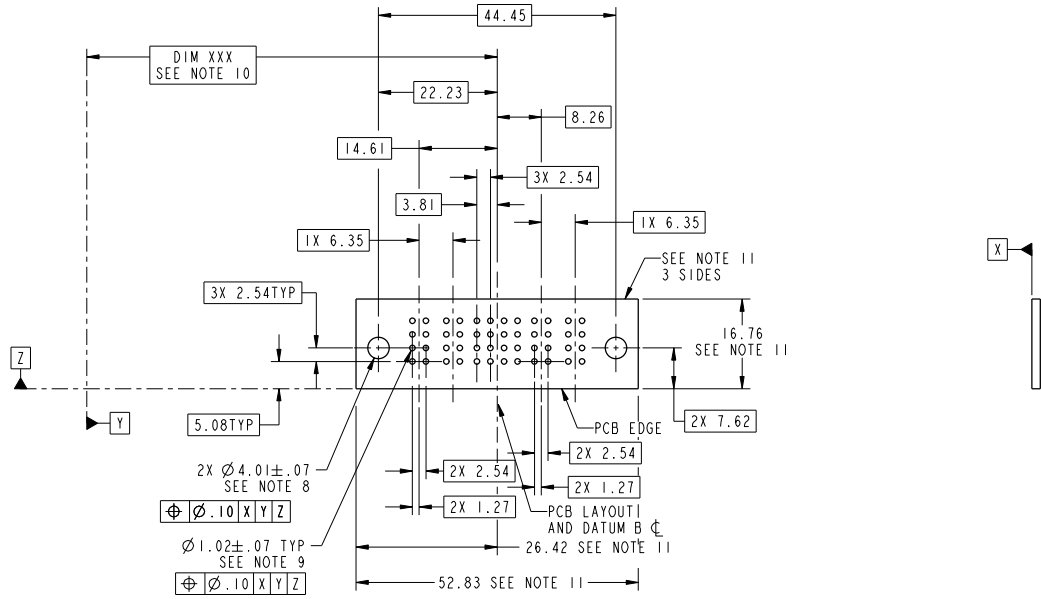
cage code 22526

Tous droits strictement réservés. Reproduction ou communication à des tiers interdite sous quelque forme que ce soit sans autorisation écrite du propriétaire. Propriété de c FCI. Droits de reproduction FCI.



All rights strictly reserved. Reproduction or issue to third parties in any form whatever is not permitted without written authority from the proprietor. Property of FCI. Copyright FCI.

PRODUCT NUMBER
51730-130--
NOTE: 3



RECOMMENDED PCB LAYOUT

mat'l code		SEE NOTE		tolerances unless otherwise specified		CUSTOMER		www.fciconnect.com	
ltr	ecm no.	dr	date	linear	0.X ±0.3	projection	COPY	title	2P + 16S + 2P
B				linear	0.XX ±0.13			RIGHT ANGLE SOLDER HEADER	
				angles	0.XXX ±0.051			product family	PwrBlade
		dr	JULIA WANG	01/15/07	0° ±2°	MM	size	dwg no	51730-130
		engr	RYAN TUAN	01/15/07		scale	1:1	sheet	3 of 4
		chr	BEER FU	01/15/07					
		appd	JOSEPH HSIA	01/15/07					
sheet index	revision sheet								

Pro/E

code code 22526

Tous droits strictement réservés. Reproduction ou communication o des tiers interdite sous quelque forme que ce soit sans autorisation écrite du propriétaire. Propriété de c FCI. Droits de reproduction FCI.



All rights strictly reserved. Reproduction or issue to third parties in any form whatever is not permitted without written authority from the proprietor. Property of FCI. Copyright FCI.

PRODUCT NUMBER
51730-130-- NOTE: 3

NOTES:

1. DIMENSIONS AND TOLERANCES ARE IN ACCORDANCE WITH ASME Y14.5M, 1994 UNLESS OTHERWISE SPECIFIED.

CONNECTOR NOTES:

- 2. HOUSING MATERIAL: UL 94 V-0 GLASS FILLED HIGH-TEMP THERMOPLASTIC
POWER CONTACT MATERIAL: COPPER ALLOY
SIGNAL PIN MATERIAL: COPPER ALLOY
 - 3. 51730-130;51730-130LF;51730-130GLF PLATING SPEC. SEE PRINT:10064183
 - 4. MANUFACTURER'S NAME, P/N, AND DATE CODE TO APPEAR ON THIS SURFACE.
 - 5. PRODUCT SPECIFICATION GS-12-149.
APPLICATION SPECIFICATION BUS-20-067.
 - 6. PACKAGED IN TRAYS.
- PCB NOTES:**
- 7. ALL HOLE DIAMETERS ARE FINISHED HOLE SIZE.
 - 8. MOUNTING HOLES, WHERE APPLICABLE, ARE UNPLATED.
 - 9. $\varnothing 1.151 \pm 0.025$ DRILLED HOLES PLATED WITH 0.008 MIN SnPb OR Sn OVER 0.03 TO 0.08 Cu PLATING TO ACHIEVE $\varnothing 1.02 \pm .07$ HOLE.
 - 10. "DIM XXX" TO BE DETERMINED BY THE CUSTOMER.
 - 11. CONNECTOR KEEP-OUT ZONE.

mat'l code		SEE NOTE		tolerances unless otherwise specified		CUSTOMER		www.fciconnect.com	
ltr	ecm no.	dr	date	linear	0.X ± 0.3	COPY		title	
B				linear	0.XX ± 0.13	projection		2P + 16S + 2P	
				angles	0.XXX ± 0.051			RIGHT ANGLE SOLDER HEADER	
				angles	0° ± 2°	MM		product family PwrBlade	
		dr	JULIA WANG 01/15/07	dr	RYAN TUAN 01/15/07	scale		size	
		eng	RYAN TUAN 01/15/07	eng	BEER FU 01/15/07	1:1		dwg no	
		chr	BEER FU 01/15/07	chr	JOSEPH HSIA 01/15/07			A 51730-130	
		appd	JOSEPH HSIA 01/15/07	appd				code	
sheet index	revision sheet							213	
								sheet 4 of 4	
								cage code 22526	