

Excellent Integrated System Limited

Stocking Distributor

Click to view price, real time Inventory, Delivery & Lifecycle Information:

[FCI](#)

[51730-158LF](#)

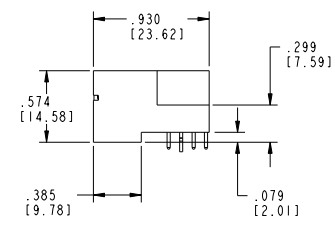
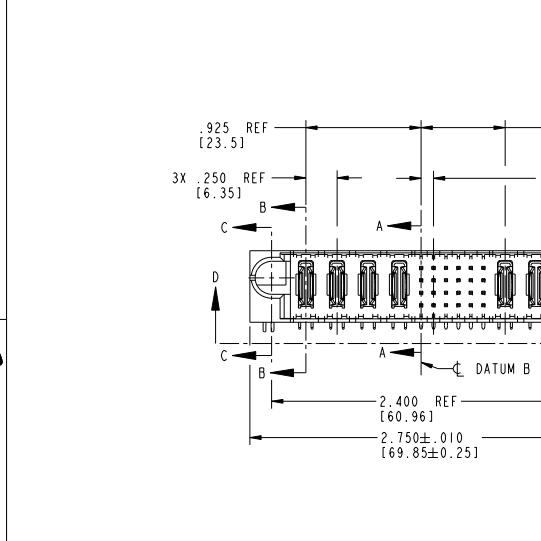
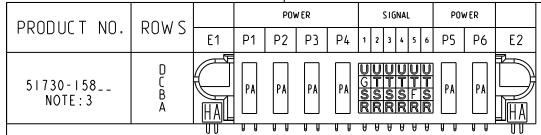
For any questions, you can email us directly:

sales@integrated-circuit.com

Tous droits strictement réservés. Reproduction ou communication, en des lieux interdite sans aucune forme que ce soit sans autorisation écrite du propriétaire. Propriété de c FCI. Droits de reproduction FCI.



All rights strictly reserved. Reproduction or issue in any form without written authority from the proprietor. Property of FCI. Copyright FCI.



CODE	DIM "M" MATING LENGTH	CONTACT TYPE
F	.220 [5.59]	SIGNAL
G	.220 [5.59]	SIGNAL
R	.270 [6.86]	SIGNAL
S	.270 [6.86]	SIGNAL
T	.270 [6.86]	SIGNAL
U	.270 [6.86]	SIGNAL
PA	N/A [N/A]	POWER
HA	N/A [N/A]	HOLD-DOWN

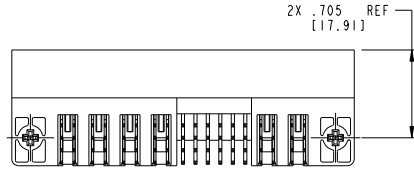
mat'l code				SEE NOTE 2				tolerances unless otherwise specified										
ltr	ecn no.	dr	date	linear	XX±.02/0.XX±0.5	angles	dr	Warren Du	02/04/09	enr	Warren Du	02/04/09	chr	Warren Du	02/04/09	oppd	Warren Du	02/04/09
A	DG09-0033	WD	02/12/09	linear	.XXX±.01/0.XXX±0.25	angles												
				linear	.XXX±.0040/0.XXX±0.10	angles												

CUSTOMER		FCI	
COPY		www.fciconnect.com	
projection	title	4P + 24S + 2P	
INCH/MM	RIGHT ANGLE SOLDER HEADER	product family PwrBlade code 213	
scale 1:1	size	dwg no	51730-158
		sheet	1 of 4

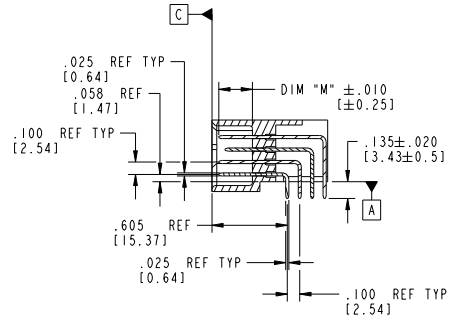
sheet index	revision sheet	A	A	A	A	A	A	A	A
1	2	3	4						

Tous droits strictement réservés. Reproduction ou communication, en des lieux interdite sans aucune forme que ce soit sans autorisation écrite du propriétaire. Propriété de c FCI. Droits de reproduction FCI.

PRODUCT NUMBER
51730-158...
NOTE: 3



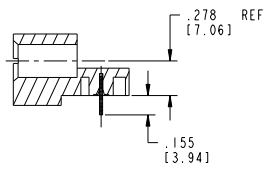
VIEW D-D



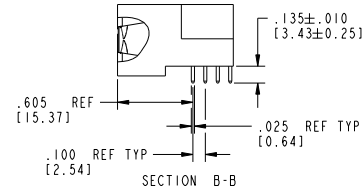
SECTION A-A



All rights strictly reserved. Reproduction or issue in any form without written authority from the proprietor. Property of FCI. Copyright FCI.



SECTION C-C



SECTION B-B

mat'l code		SEE NOTE 2		tolerances unless otherwise specified		CUSTOMER		FCI		www.fciconnect.com	
ltr	ecm no.	dr	date	linear	.XX±.02/0.XX±0.5	COPY		projection		title	
A				linear	.XX±.01/0.XX±0.25	COPY		FIRST ANGLE		4P + 24S + 2P	
				angles	.XXX±.004/0.XX±0.10	INCH/MM		product family		PwrBlade	
				dr	Warren Du 02/04/09	1:1		size		dwg no	
				enr	Warren Du 02/04/09	scale		A		51730-158	
				chr	Warren Du 02/04/09					213	
				oppd	Warren Du 02/04/09					sheet	
sheet index	revision sheet									2 of 4	

Pro/E

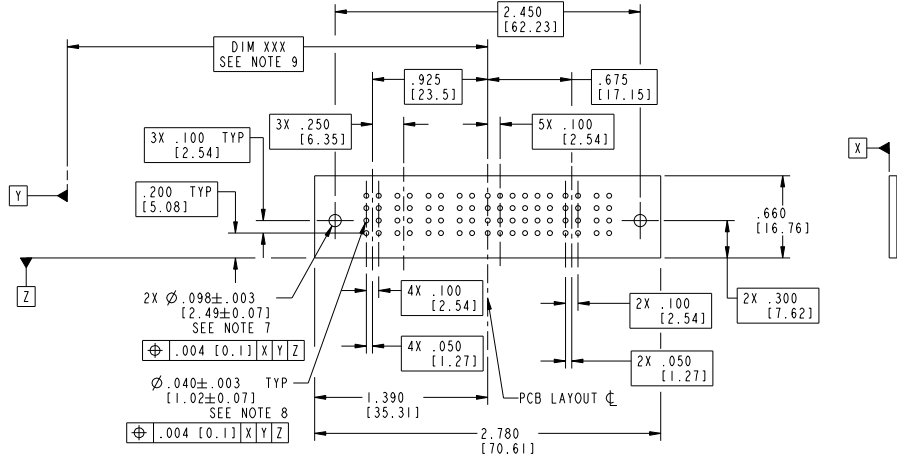
cage code 22526

Tous droits strictement réservés. Reproduction ou communication, en des lieux interdite sans aucune forme que ce soit sans autorisation écrite du propriétaire. Propriété de FCI. Droits de reproduction FCI.



All rights strictly reserved. Reproduction or issue in any form without written authority from the proprietor. Property of FCI. Copyright FCI.

PRODUCT NUMBER
51730-158...
NOTE: 3



RECOMMENDED PCB LAYOUT

mat'l code		SEE NOTE 2	tolerances unless otherwise specified	CUSTOMER	www.fciconnect.com title 4P + 24S + 2P RIGHT ANGLE SOLDER HEADER product family PwrBlade code 213 size dwg no 51730-158 sheet 3 of 4
ltr	ecm no.	dr	date	COPY	
A				projection	
				INCH/MM	
				scale 1:1	
sheet index	revision sheet				

Pro/E

cage code 22526

Tous droits strictement réservés. Reproduction ou communication, en des lieux interdite sans aucune forme, que ce soit sans autorisation écrite du propriétaire.
 Property of FCI. Droits de reproduction FCI.



All rights strictly reserved. Reproduction or issue in any form wherever is not permitted without written authority from the proprietor.
 Property of FCI. Copyright FCI.

PRODUCT NUMBER
51730-158_
NOTE: 3

NOTES:

1. DIMENSIONS AND TOLERANCES ARE IN ACCORDANCE WITH ASME Y14.5M, 1994 UNLESS OTHERWISE SPECIFIED.
- CONNECTORS NOTES:
 - ② HOUSING MATERIAL: UL 94 V-0 GLASS FILLED HIGH TEMP THERMO PLASTIC
POWER CONTACT MATERIAL: COPPER ALLOY
SIGNAL PIN MATERIAL: COPPER ALLOY
 - ③ SEE ITEM 1 & 2 IN PRINT 10064183 FOR PLATING SPEC OF 51730-158 AND 51730-158LF RESPECTIVELY.
 4. "MANUFACTURER" NAME, P/N, AND DATE CODE TO APPEAR ON THIS SURFACE.
 5. PRODUCT SPECIFICATION GS-12-149.
- PCB - NOTES:
 6. ALL HOLE DIAMETERS ARE FINISHED HOLE SIZE.
 - ⑦ HOLD DOWN THROUGH HOLES ARE UNPLATED.
 - ⑧ $\varnothing .0453 \pm 0.0010$ [1.151 \pm 0.025] DRILLED HOLES PLATED WITH 0.0003 [0.008] MIN SnPb OVER .001 [0.03] TO .003 [0.08] Cu PLATING TO ACHIEVE $\varnothing .040 \pm .003$ [1.02 \pm .07] HOLE.
 - ⑨ "DIM XXX" TO BE DETERMINED BY THE CUSTOMER.

mat'l code		SEE NOTE 2	tolerances unless otherwise specified	CUSTOMER	www.fciconnect.com title 4P + 24S + 2P RIGHT ANGLE SOLDER HEADER product family PwrBlade code 213 size dwg no 51730-158 sheet 4 of 4
ltr	ecm no.	dr	date	COPY	
A				linear	INCH/MM scale 1:1
				angles	
				dr	
				enrg	
				chr	
				oppd	
sheet index	revision sheet				

1 | 2

Pro/E

3 |

cage code 22526

4