

Excellent Integrated System Limited

Stocking Distributor

Click to view price, real time Inventory, Delivery & Lifecycle Information:

[FCI](#)

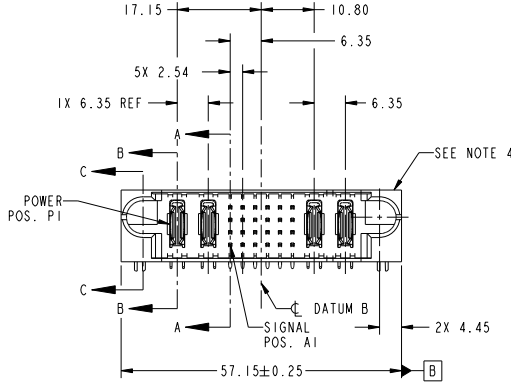
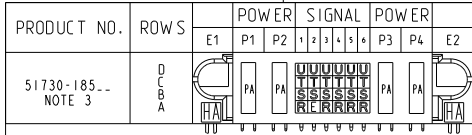
[51730-185LF](#)

For any questions, you can email us directly:

sales@integrated-circuit.com

Tous droits strictement réservés. Reproduction ou communication à des tiers interdite sous quelque forme que ce soit sans autorisation écrite du propriétaire. Propriété de FCI. Droits de reproduction FCI.

All rights strictly reserved. Reproduction or issue to third parties in any form whatever is not permitted without written authority from the proprietor. Property of FCI. Copyright FCI.



CODE	DIM "M" MATING LENGTH	CONTACT TYPE
U	[6.86]	SIGNAL
T	[6.86]	SIGNAL
S	[6.86]	SIGNAL
R	[6.86]	SIGNAL
PA	[N/A]	POWER
HA	[N/A]	HOLD-DOWN
E	[5.59]	SIGNAL

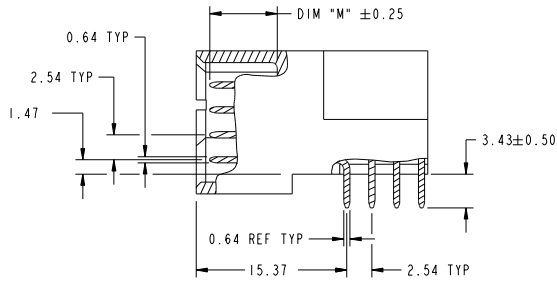
mat'l code		SEE NOTE		tolerances unless otherwise specified	
ltr	ecm no.	dr	date		0.X ±0.5
A	DG10-0362	ZWL	10/22/10	linear	0.XX ±0.25
				angles	0.XXX ±0.1
				dr	0° ±2°
				enr	WL ZHANG 10/22/10
				chr	Jerome Chen 10/22/10
				oppd	PM Zheng 10/22/10
sheet index	revision sheet	A	A	A	A
		1	2	3	4

CUSTOMER		FCI	
COPY		www.fciconnect.com	
projection	title	2P + 24S + 2P RIGHT ANGLE SOLDER HEADER	
MM	product family	PwrBlade	
scale	size	dwg no	code
1:1	A	51730-185	213
			sheet 1 of 4
	cage code	22526	

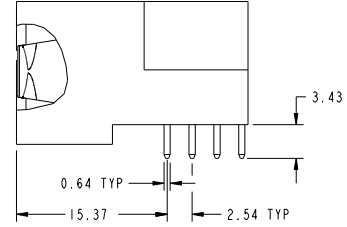
Tous droits strictement réservés. Reproduction ou communication à des tiers interdite sous quelque forme que ce soit sans autorisation écrite du propriétaire. Propriété de FCI. Droits de reproduction FCI.

All rights strictly reserved. Reproduction or issue to third parties in any form whatever is not permitted without written authority from the proprietor. Property of FCI. Copyright FCI.

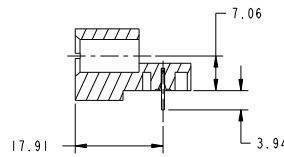
PRODUCT NUMBER
51730-185...
NOTE: 3



BROKEN-OUT SECTION A-A
SCALE 2:1



BROKEN-OUT SECTION B-B
SCALE 2:1



SECTION C-C

mat'l code		SEE NOTE		tolerances unless otherwise specified		CUSTOMER	
ltr	ecm no.	dr	date	linear	0.X ±0.5	COPY	www.fciconnect.com
A					0.XX ±0.25	projection	
				angles	0.XXX ±0.1		title
				dr	0° ±2°	MM	2P + 24S + 2P
				enr	WL ZHANG 10/22/10	scale	RIGHT ANGLE SOLDER HEADER
				chr	Jerome Chen 10/22/10	product family	PwrBlade
				appd	PM Zheng 10/22/10	size	code
sheet index	revision sheet					1:1	51730-185
							213 sheet 2 of 4
							cage code 22526

Pro/E

3

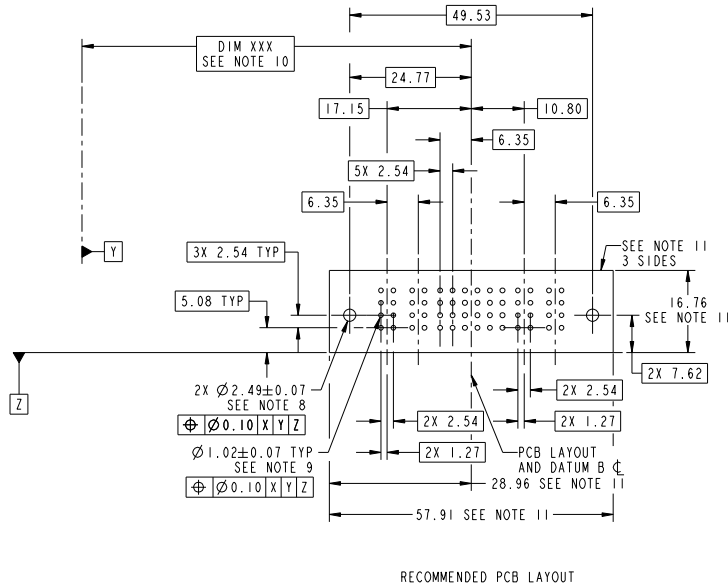
cage code 22526

4

Tous droits strictement réservés. Reproduction ou communication à des tiers interdite sous quelque forme que ce soit sans autorisation écrite du propriétaire. Propriété de FCI. Droits de reproduction FCI.

All rights strictly reserved. Reproduction or issue to third parties in any form whatever is not permitted without written authority from the proprietor. Property of FCI. Copyright FCI.

PRODUCT NUMBER
51730-185...
NOTE: 3



RECOMMENDED PCB LAYOUT

mat'l code		SEE NOTE		tolerances unless otherwise specified		CUSTOMER	
ltr	ecm no.	dr	date	linear	0.X ± 0.5	COPY	www.fciconnect.com
A				angles	0.XX ± 0.25	projection	
					0.XXX ± 0.1	MM	title
				dr	0° ± 2°	scale	2P + 24S + 2P
				engr	WL ZHANG 10/22/10	1:1	RIGHT ANGLE SOLDER HEADER
				chr	Jerome Chen 10/22/10	product family	PwrBlade
				oppd	PM Zheng 10/22/10	size	code
sheet index	revision sheet					A	51730-185
							213 sheet 3 of 4
							cage code 22526

Tous droits strictement réservés. Reproduction ou communication à des tiers interdite sous quelque forme que ce soit sans autorisation écrite du propriétaire. Propriété de FCI. Droits de reproduction FCI.

All rights strictly reserved. Reproduction or issue to third parties in any form whatever is not permitted without written authority from the proprietor. Property of FCI. Copyright FCI.

PRODUCT NUMBER
51730-185_
NOTE: 3

NOTES:

1. DIMENSIONS AND TOLERANCES ARE IN ACCORDANCE WITH ASME Y14.5M, 1994 UNLESS OTHERWISE SPECIFIED.

CONNECTOR NOTES:

- 2. HOUSING MATERIAL: UL 94 V-0 GLASS FILLED HIGH-TEMP THERMOPLASTIC
POWER CONTACT MATERIAL: COPPER ALLOY
SIGNAL PIN MATERIAL: COPPER ALLOY
 - 3. SEE ITEM 1 & 2 IN PRINT 10064183 FOR PLATING SPEC OF 51730-185 AND 51730-185LF RESPECTIVELY.
 - 4. MANUFACTURER'S NAME, DATE CODE AND OPTIONAL P/N TO APPEAR ON THIS SURFACE. THE P/N CAN BE OMITTED IF THERE IS NOT ENOUGH SPACE ON THIS SURFACE.
 - 5. PRODUCT SPECIFICATION GS-12-149.
APPLICATION SPECIFICATION BUS-20-067.
 - 6. PACKAGED IN TRAYS.
- PCB NOTES:
- 7. ALL HOLE DIAMETERS ARE FINISHED HOLE SIZE.
 - 8. MOUNTING HOLES, WHERE APPLICABLE, ARE UNPLATED.
 - 9. $\varnothing 1.151 \pm 0.025$ DRILLED HOLES PLATED WITH
0.008 MIN SnPb OR Sn OVER 0.03
TO 0.08 Cu PLATING TO ACHIEVE
 $\varnothing 1.02 \pm 0.07$ HOLE.
 - 10. "DIM XXX" TO BE DETERMINED BY THE CUSTOMER.
 - 11. CONNECTOR KEEP-OUT ZONE.

mat'l code		SEE NOTE		tolerances unless otherwise specified		CUSTOMER	
ltr	ecm no.	dr	date	linear	0.X ± 0.5	COPY	
A					0.XX ± 0.25	projection	www.fciconnect.com
				angles	0.XXX ± 0.1		title
				dr	0° ± 2°		2P + 24S + 2P RIGHT ANGLE SOLDER HEADER
				enr	WL ZHANG 10/22/10	product family	PwrBlade
				chr	Jerome Chen 10/22/10	size	code
				appd	PM Zheng 10/22/10	dwg no	213
sheet index	revision sheet					scale	4 of 4
						1:1	

cage code 22526