

## Excellent Integrated System Limited

Stocking Distributor

Click to view price, real time Inventory, Delivery & Lifecycle Information:

[FCI](#)

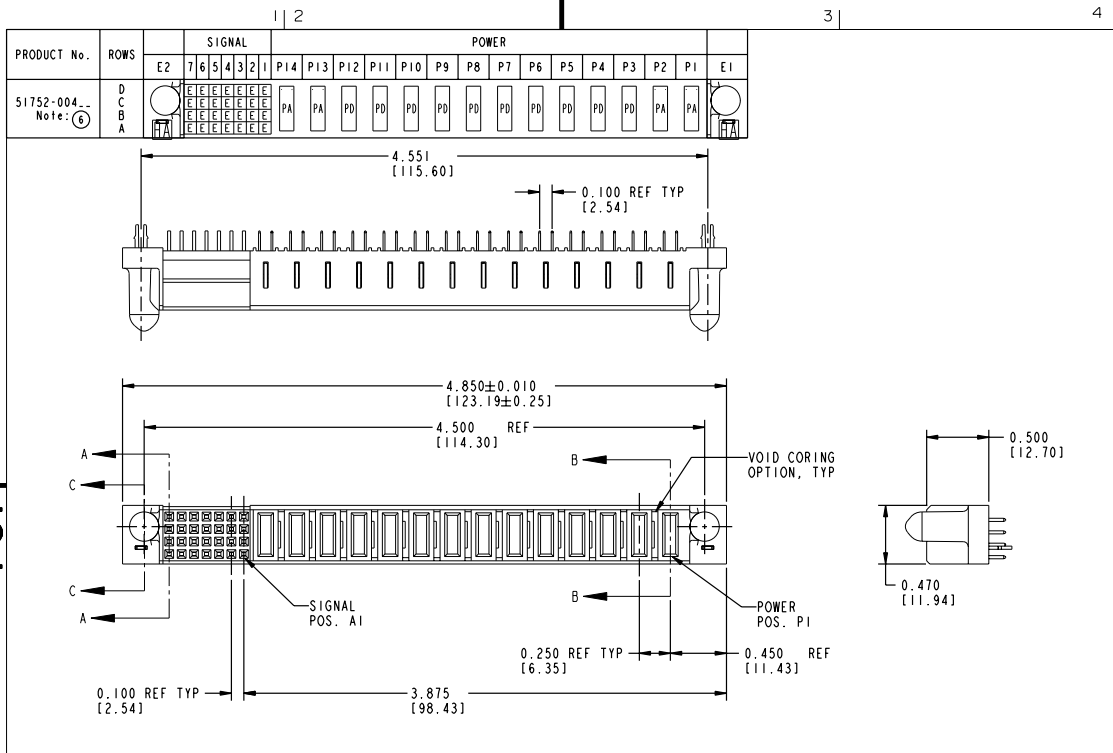
[51753-004LF](#)

For any questions, you can email us directly:

[sales@integrated-circuit.com](mailto:sales@integrated-circuit.com)

Tous droits strictement réservés. Reproduction ou communication à des fins inférieures sans aucune forme que ce soit sans autorisation écrite du propriétaire. Propriété de c FCI. Droits de reproduction FCI.

All rights strictly reserved. Reproduction or issue to third parties in any form whatever is not permitted without written authority from the proprietor. Property of FCI. Copyright FCI.



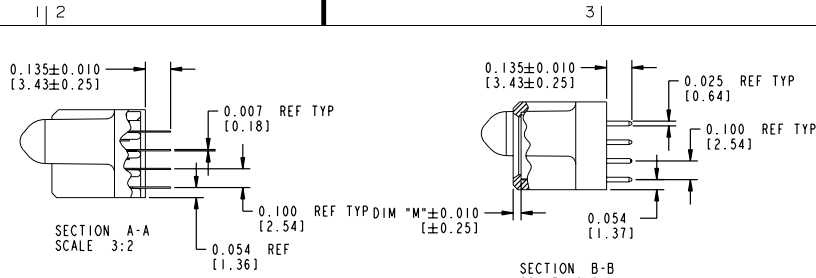
CODE	DIM "M"	CONTACT TYPE
E	N/A [N/A]	SIGNAL
HA	N/A [N/A]	HOLD-DOWN
PA	0.042 [1.07]	POWER
PD	0.092 [2.34]	POWER

NOTE 1				tolerances unless otherwise specified		CUSTOMER	
ltr	ecm no.	dr	date	linear	.XXX±.01/0.XX±0.3	COPY	www.fciconnect.com
A	V11588	CGD	05/29/01	projection	.XXX±.005/0.XX±0.13	INCH/MM	title
B	DG65-0168	SJ	06/17/05	angles	.XXX±.0020/.XX±.051	scale	14P + 28S VERTICAL SOLDER RECEPTACLE
				dr	C. DAILY 05/29/01	product family	PwrBlade
				enrg	J. ALLISON 05/29/01	size	code
				chr	J. ALLISON 05/29/01	dwg no	213
				oppd	J. ALLISON 05/29/01	code	51752-004
				sheet index	1 2 3	sheet	of 3
				revision sheet	B B B	code code	22526

Tous droits strictement réservés. Reproduction ou communication de ces lignes initiales sous quelque forme que ce soit sans autorisation écrite du propriétaire. Propriété de c FCI. Droits de reproduction FCI.

All rights strictly reserved. Reproduction or issue in third parties in any form whatever is not permitted without written authority from the proprietor. Property of FCI. Copyright FCI.

PRODUCT NUMBER  
**51752-004..**  
Note: ⑥

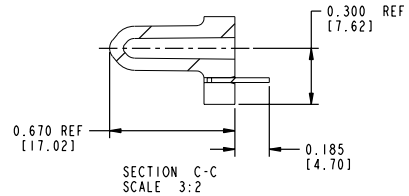


CONNECTOR NOTES:

1. FOR ADDITIONAL INFORMATION, REFER TO DRAWING NUMBER 51752.

PCB NOTES:

2. ALL DIMENSIONS ARE BASIC UNLESS OTHERWISE SPECIFIED.
3. ALL THROUGH HOLES ARE LOCATED WITH A TRUE POSITION OF 0.004 [0.10]
4. ALL HOLE DIAMETERS ARE FINISHED HOLE SIZE
5.  $\varnothing 0.0453 \pm 0.0010$  [1.151  $\pm$  0.025] DRILLED HOLES PLATED WITH 0.0003 [0.008] MIN SnPb OVER 0.001 [0.03] TO 0.003 [0.08] Cu PLATING TO ACHIEVE A  $\varnothing 0.040 \pm 0.003$  [1.02  $\pm$  0.07] HOLE.



⑥ PLATING:

51752-004 Singal Pin: 30u"/0.76um Au OVER 50u"/1.27um Ni ON THE CONTACT AREA, AND 100u"/2.54um SnPb PLATING OVER 50u"/1.27um Ni ON THE TERMINATION SECTION.  
Power Pin: 30u"/0.76um Au OVER 50u"/1.27um Ni ON THE CONTACT AREA, AND 100u"/2.54um SnPb PLATING OVER 50u"/1.27um Ni ON THE TERMINATION SECTION.

51752-004LF Singal Pin: 30u"/0.76um Au OVER 50u"/1.27um Ni ON THE CONTACT AREA, AND 78u"/2.00um Sn PLATING OVER 50u"/1.27um Ni ON THE TERMINATION SECTION.  
Power Pin: 30u"/0.76um Au OVER 50u"/1.27um Ni ON THE CONTACT AREA, AND 78u"/2.00um Sn PLATING OVER 50u"/1.27um Ni ON THE TERMINATION SECTION.

PART NUMBER 51752-004LF MEETS EUROPEAN UNION DIRECTIVE AND OTHER COUNTRY REGULATIONS AS DESCRIBED IN GS-22-008.

THE HOUSING WILL WITHSTAND EXPOSURE TO 260° PEAK TEMPERATURE FOR 10 SECONDS IN A WAVE SOLDER APPLICATION WITH A CIRCUIT BOARD.

mat'l code				NOTE 1	tolerances unless otherwise specified	CUSTOMER		FCI	
ltr	ecn no.	dr	date	linear	.xxx±.01/0.xxx±0.3	COPY		www.fciconnect.com	
B				angles	.xxx±.005/0.xxx±0.13	projection	title		
				dr	.xxx±.0020/.xxx±.051	INCH/MM		14P + 28S	
				enr	0°±2°	scale		VERTICAL SOLDER RECEPTACLE	
				chr	C. DAILY 05/29/01	1:1		product family	PwrBlade
				appd	J. ALLISON 05/29/01	A		size	code
					J. ALLISON 05/29/01			dwg no	213
sheet index	revision sheet							51752-004	sheet 2

Pro/E

code code 22526

PDM: Rev:B

STATUS: Released

Printed: Dec 20, 2010

