

Excellent Integrated System Limited

Stocking Distributor

Click to view price, real time Inventory, Delivery & Lifecycle Information:

[FCI](#)

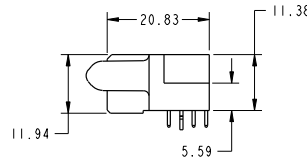
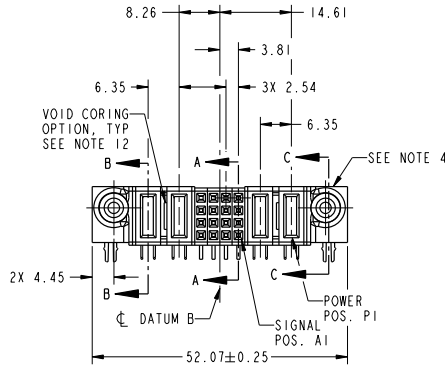
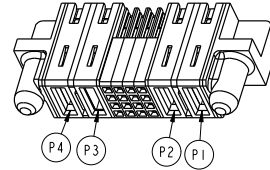
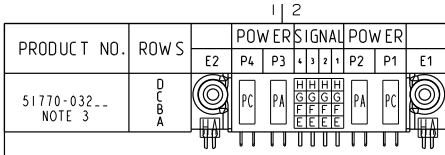
[51770-032LF](#)

For any questions, you can email us directly:

sales@integrated-circuit.com

Tous droits strictement réservés. Reproduction ou communication à des tiers interdite sous quelque forme que ce soit sans autorisation écrite du propriétaire. Property of FCI. Droits de reproduction FCI.

All rights strictly reserved. Reproduction or issue to third parties in any form whatever is not permitted without written authority from the proprietor. Property of FCI. Copyright FCI.



CODE	DIM "M" MATING LENGTH	DIM "W" MIN WIPE LENGTH	CONTACT TYPE
PC	2.34	4.50	POWER
H	N/A	N/A	SIGNAL
G	N/A	N/A	SIGNAL
F	N/A	N/A	SIGNAL
E	N/A	N/A	SIGNAL
HA	N/A	N/A	HOLD-DOWN POWER
PA	1.07	5.77	POWER

mat'l code				SEE NOTE 2		tolerances unless otherwise specified	
ltr	ecm no.	dr	date				
A	DG08-0044	JC	02/25/08	linear	0.X ±0.5		
					0.XX ±0.25		
					0.XXX ±0.1		
				angles	0° ±2°		
		dr			Jerome Chen	01/18/08	
		engr			Jerome Chen	01/18/08	
		chr			Gary Hsieh	01/18/08	
		appd			Joseph Hsiao	01/18/08	
sheet index	revision sheet	A	A	A	A	A	A
		1	2	3	4		

CUSTOMER		FCI	
COPY		www.fciconnect.com	
projection	title	product family	code
MM	2P + 16S + 2P R/A SOLDER RECEPTACLE	PwrBlade	213
scale	size	dwg no	sheet
1:1	A	51770-032	1 of 4
cage code		code	
22526		4	

Pro/E

PDM: Rev:A

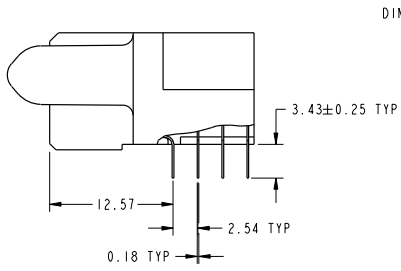
STATUS: Released

Printed: Dec 20, 2010

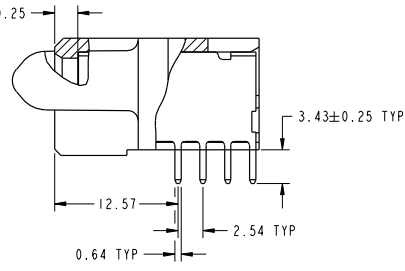
Tous droits strictement réservés. Reproduction ou communication à des tiers interdite sous quelque forme que ce soit sans autorisation écrite du propriétaire. Propriété de FCI. Droits de reproduction FCI.

All rights strictly reserved. Reproduction or issue to third parties in any form whatever is not permitted without written authority from the proprietor. Property of FCI. Copyright FCI.

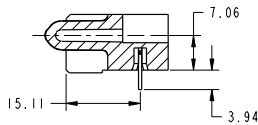
PRODUCT NUMBER
51770-032...
NOTE 3



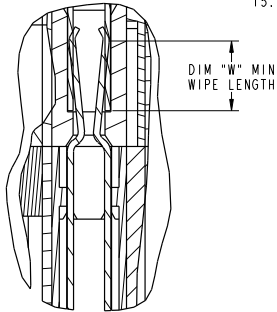
SECTION A-A
SCALE 2:1



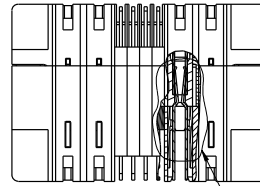
SECTION B-B
SCALE 2:1



SECTION C-C



DETAIL A
SCALE 3:1



SECTION PWR-PWR
SCALE 1:1

mat'l code		SEE NOTE 2	tolerances unless otherwise specified	CUSTOMER	FCI		www.fciconnect.com
ltr	ecm no.	dr	date	0. X ±0.5	COPY		
A				0. XX ±0.25	projection	title	
				0. XXX ±0.1	MM	2P + 16S + 2P R/A SOLDER RECEPTACLE	
				angles 0° ±2°	scale	product family	PwrBlade
		dr	Jerome Chen	01/18/08	1:1	size	code
		eng	Jerome Chen	01/18/08		dwg no	213
		chr	Gary Hsieh	01/18/08		51770-032	sheet
		appd	Joseph Hsiao	01/18/08		A	2 of 4
sheet index	revision sheet						

Pro/E

PDM: Rev:A

STATUS: Released

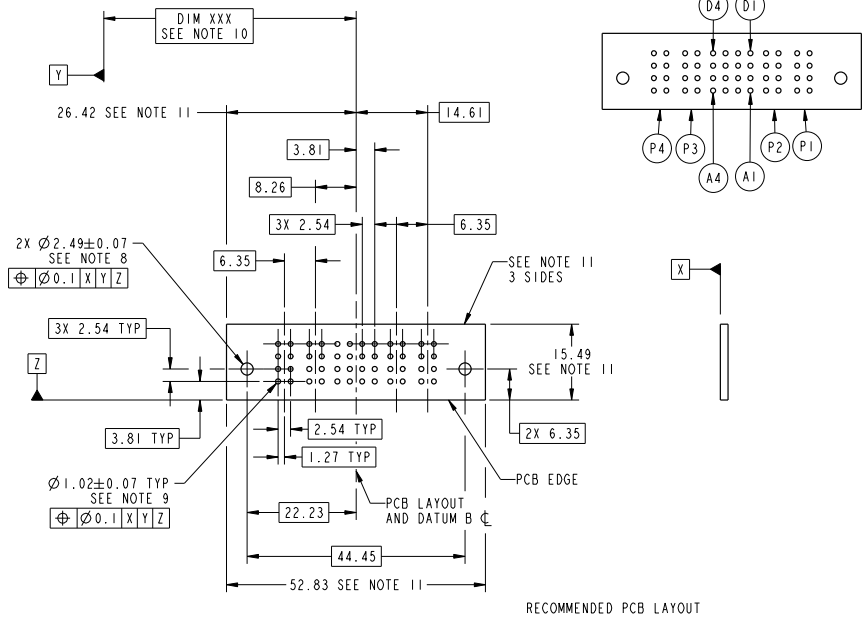
Printed: Dec 20, 2010

Tous droits strictement réservés. Reproduction ou communication à des tiers interdite sous quelque forme que ce soit sans autorisation écrite du propriétaire. Propriété de FCI. Droits de reproduction FCI.



All rights strictly reserved. Reproduction or issue to third parties in any form whatever is not permitted without written authority from the proprietor. Property of FCI. Copyright FCI.

PRODUCT NUMBER
51770-032...
NOTE 3



mat'l code		SEE NOTE	tolerances unless otherwise specified	CUSTOMER	FCI	www.fciconnect.com	
ltr	ecm no.	dr	date	COPY projection MIM scale 1:1		title 2P + 16S + 2P R/A SOLDER RECEPTACLE product family PwrBlade code size 213 dwg no 51770-032 sheet 3 of 4	
A							0. X ± 0.5 0. XX ± 0.25 0. XXX ± 0.1 angles 0° ± 2°
							dr Jerome Chen 01/18/08 eng Jerome Chen 01/18/08 chr Gary Hsieh 01/18/08 appd Joseph Hsiao 01/18/08
sheet index	revision	sheet					sheet 213 of 4
							code code 22526

Pro/E

Tous droits strictement réservés. Reproduction ou communication à des tiers interdite sous quelque forme que ce soit sans autorisation écrite du propriétaire. Propriété de FCI. Droits de reproduction FCI.

All rights strictly reserved. Reproduction or issue to third parties in any form whatever is not permitted without written authority from the proprietor. Property of FCI. Copyright FCI.

PRODUCT NUMBER
 51770-032...
 NOTE 3

- NOTES:
- DIMENSIONS AND TOLERANCES ARE IN ACCORDANCE WITH ASME Y14.5M, 1994 UNLESS OTHERWISE SPECIFIED.
- CONNECTOR NOTES:
- HOUSING MATERIAL: UL 94 V-0 GLASS FILLED HIGH-TEMP THERMOPLASTIC
 POWER CONTACT MATERIAL: COPPER ALLOY
 SIGNAL PIN MATERIAL: COPPER ALLOY
 - PLATING:
 SEE PRINT 10064183 FOR PLATING SPEC OF 51770-032; 51770-032LF
 - MANUFACTURER'S NAME, P/N, AND DATE CODE TO APPEAR ON THIS SURFACE.
 - PRODUCT SPECIFICATION GS-12-149,
 APPLICATION SPECIFICATION BUS-20-067.
 - PACKAGED IN TRAYS.
- PCB NOTES:
- ALL HOLE DIAMETERS ARE FINISHED HOLE SIZE.
 - MOUNTING HOLES, WHERE APPLICABLE, ARE UNPLATED.
 - $\varnothing 1.151 \pm 0.025$ DRILLED HOLES PLATED WITH
 0.008 MIN SnPb OR Sn OVER 0.03
 TO 0.08 Cu PLATING TO ACHIEVE
 $\varnothing 1.02 \pm 0.07$ HOLE.
 - "DIM XXX" TO BE DETERMINED BY THE CUSTOMER.
 - CONNECTOR KEEP-OUT ZONE.
 - THE VOID CORING IN BETWEEN POWER MODULES, SIGNAL MODULES AND END MODULES
 ARE OPTIONAL AND THE SHAPE MAY BE DIFFERENT FOR OPTIMIZE THE MOLDING PROCESS.
 THE VOID CORING WILL NOT EFFECT TO PRODUCT FUNCTION.

mat'l code		SEE NOTE 2		tolerances unless otherwise specified		CUSTOMER		FCI	
ltr	ecm no.	dr	date	linear	0.X ± 0.5	COPY		www.fciconnect.com	
A					0.XX ± 0.25	projection	title		2P + 16S + 2P
				angles	0.XXX ± 0.1		R/A SOLDER RECEPTACLE		
					0° ± 2°		product family	PwrBlade	code
		dr	Jerome Chen	01/18/08		size	dwg no	51770-032	213
		eng	Jerome Chen	01/18/08		scale	A	4 of 4	
		chr	Gary Hsieh	01/18/08					
		appd	Joseph Hsiao	01/18/08					
sheet index	revision sheet								