

## Excellent Integrated System Limited

Stocking Distributor

Click to view price, real time Inventory, Delivery & Lifecycle Information:

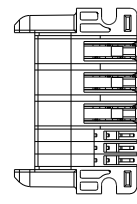
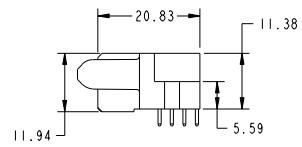
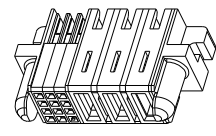
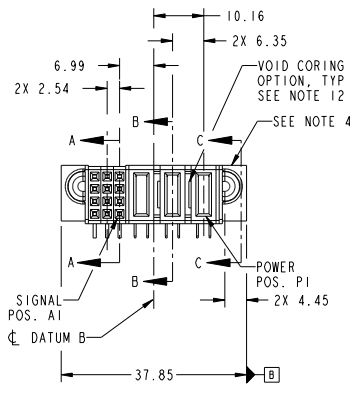
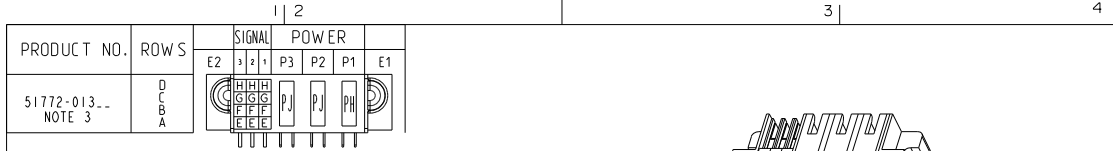
[FCI](#)  
[51772-013LF](#)

For any questions, you can email us directly:  
[sales@integrated-circuit.com](mailto:sales@integrated-circuit.com)

Tous droits strictement réservés. Reproduction ou communication à des tiers interdite sous quelque forme que ce soit sans autorisation écrite du propriétaire. Propriété de FCI. Droits de reproduction FCI.



All rights strictly reserved. Reproduction or issue to third parties in any form whatever is not permitted without written authority from the proprietor. Property of FCI. Copyright FCI.



CODE	DIM "M" MATING LENGTH	CONTACT TYPE
PJ	[2.34]	POWER
H	[N/A]	SIGNAL
G	[N/A]	SIGNAL
F	[N/A]	SIGNAL
E	[N/A]	SIGNAL
PH	[1.07]	POWER

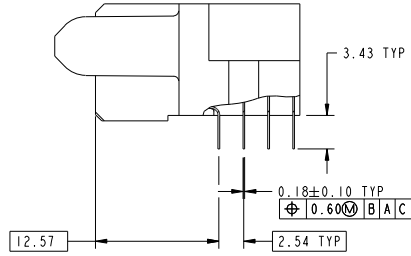
mat'l code				SEE NOTE 2		tolerances unless otherwise specified		CUSTOMER	
ltr	ecn no.	dr	date	linear	0.X ±0.5	projection		www.fciconnect.com	
A	DG10-0178	WD	05/12/10		0.XX ±0.25	MM		title	
				angles	0.XXX ±0.1	MM		3P + 12S	
				dr	0" ±2°	MM		R/A SOLDER RECEPTACLE	
				engr	Jerome Chen 06-Jul-09	MM		product family PwrBlade	
				chr	Warren Du 02/24/10	MM		size	
				oppd	PM Zheng 06-Jul-09	MM		dwg no	
					Joseph Hsiao 06-Jul-09	MM		51772-013	
sheet index	revision sheet	A 1	A 2	A 3	A 4	scale 1:1		code 213 sheet 1 of 4	

FCI		www.fciconnect.com	
COPY		title	
3P + 12S		R/A SOLDER RECEPTACLE	
product family PwrBlade		size	
dwg no 51772-013		code 213 sheet 1 of 4	
cage code 22526			

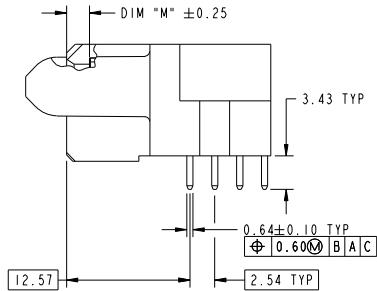
Tous droits strictement réservés. Reproduction ou communication à des tiers interdite sous quelque forme que ce soit sans autorisation écrite du propriétaire. Propriété de FCI. Droits de reproduction FCI.

All rights strictly reserved. Reproduction or issue to third parties in any form whatever is not permitted without written authority from the proprietor. Property of FCI. Copyright FCI.

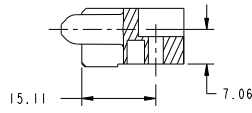
PRODUCT NUMBER  
51772-013...  
NOTE 3



BROKEN-OUT SECTION A-A  
SCALE 2:1



BROKEN-OUT SECTION B-B  
SCALE 2:1



SECTION C-C

mat'l code				SEE NOTE 2	tolerances unless otherwise specified	CUSTOMER	FCI	
ltr	ecm no.	dr	date	linear	0.X ± 0.5	COPY	www.fciconnect.com	
A				angles	0.XX ± 0.25	projection	title	
				dr	0.XXX ± 0.1		3P + 12S	
				enr	0" ± 2"		R/A SOLDER RECEPTACLE	
				chr			product family	
				oppd			PwrBlade	
sheet index	revision sheet			dr	Jerome Chen 06-Jul-09	scale	size	code
				enr	Warren Du 02/24/10	1:1	dwg no	213
				chr	PM Zheeng 06-Jul-09		51772-013	sheet
				oppd	Joseph Hsiao 06-Jul-09		A	2 of 4
							cage code	
							22526	

Pro/E

PDM: Rev:A

STATUS: Released

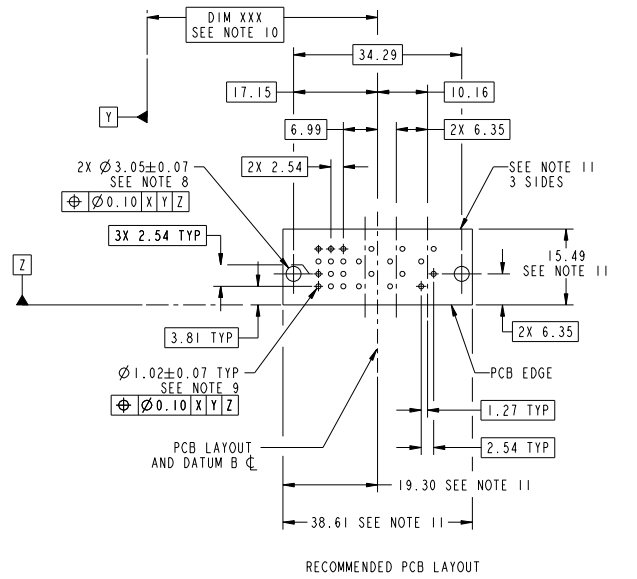
Printed: Dec 20, 2010

Tous droits strictement réservés. Reproduction ou communication à des tiers interdite sous quelque forme que ce soit sans autorisation écrite du propriétaire. Propriété de FCI. Droits de reproduction FCI.



All rights strictly reserved. Reproduction or issue to third parties in any form whatever is not permitted without written authority from the proprietor. Property of FCI. Copyright FCI.

PRODUCT NUMBER  
51772-013...  
NOTE 3



mat'l code		SEE NOTE		tolerances unless otherwise specified		CUSTOMER	
lfr	ecm no.	dr	date	linear	0 . X ± 0.5	COPY	www.fciconnect.com
A				linear	0 . XX ± 0.25	projection	title
				angles	0 . XXX ± 0.1		3P + 12S
				angles	0° ± 2°	MM	R/A SOLDER RECEPTACLE
		dr	Jerome Chen	06-Jul-09		product family	PwrBlade
		enr	Warren Du	02/24/10		size	dwg no
		chr	PM Zheng	06-Jul-09		scale	51772-013
		oppd	Joseph Hsiao	06-Jul-09		code	213
sheet index	revision sheet					code	3 of 4

Pro/E

cage code 22526

Tous droits strictement réservés. Reproduction ou communication à des tiers interdite sous quelque forme que ce soit sans autorisation écrite du propriétaire. Propriété de FCI. Droits de reproduction FCI.

All rights strictly reserved. Reproduction or issue to third parties in any form whatever is not permitted without written authority from the proprietor. Property of FCI. Copyright FCI.

PRODUCT NUMBER  
51772-013-  
NOTE 3

NOTES:

1. DIMENSIONS AND TOLERANCES ARE IN ACCORDANCE WITH ASME Y14.5M, 1994 UNLESS OTHERWISE SPECIFIED.

CONNECTOR NOTES:

- 2. HOUSING MATERIAL: UL 94 V-0 GLASS FILLED HIGH-TEMP THERMOPLASTIC  
POWER CONTACT MATERIAL: COPPER ALLOY  
SIGNAL PIN MATERIAL: COPPER ALLOY
- 3. PLATING:  
SEE ITEM 5 & 6 IN PRINT 10064183 FOR PLATING SPEC OF 51772-013 AND 51772-013LF RESPECTIVELY

4. MANUFACTURER'S NAME, DATE CODE AND OPTIONAL P/N TO APPEAR ON THIS SURFACE. THE P/N CAN BE OMITTED IF THERE IS NOT ENOUGH SPACE ON THIS SURFACE.

5. PRODUCT SPECIFICATION GS-12-149.  
APPLICATION SPECIFICATION BUS-20-067.

6. PACKAGED IN TRAYS.

PCB NOTES:

- 7. ALL HOLE DIAMETERS ARE FINISHED HOLE SIZE.
- 8. MOUNTING HOLES, WHERE APPLICABLE, ARE UNPLATED.
- 9.  $\varnothing 1.151 \pm 0.025$  DRILLED HOLES PLATED WITH 0.008 MIN SnPb OR Sn OVER 0.03 TO 0.08 Cu PLATING TO ACHIEVE  $\varnothing 1.02 \pm 0.07$  HOLE.
- 10. "DIM XXX" TO BE DETERMINED BY THE CUSTOMER.
- 11. CONNECTOR KEEP-OUT ZONE.
- 12. THE VOID CORING IN BETWEEN POWER MODULES, SIGNAL MODULES AND END MODULES ARE OPTIONAL AND THE SHAPE MAY BE DIFFERENT FOR OPTIMIZE THE MOLDING PROCESS. THE VOID CORING WILL NOT EFFECT TO PRODUCT FUNCTION.

mat'l code		SEE NOTE 2		tolerances unless otherwise specified		CUSTOMER		FCI		www.fciconnect.com	
ltr	ecm no.	dr	date	linear	0.X ± 0.5	COPY		projection		title	
A					0.XX ± 0.25	MM		A		3P + 12S R/A SOLDER RECEPTACLE	
				angles	0° ± 2°	scale		product family		code	
		dr	Jerome Chen	06-Jul-09		1:1		PwrBlade		213	
		engr	Warren Du	02/24/10				size		sheet	
		chr	PM Zheng	06-Jul-09				dwg no		4 of 4	
		oppd	Joseph Hsia	06-Jul-09				51772-013			
sheet index	revision sheet										

Pro/E

cage code 22526