

## Excellent Integrated System Limited

Stocking Distributor

Click to view price, real time Inventory, Delivery & Lifecycle Information:

[FCI](#)  
[51772-018LF](#)

For any questions, you can email us directly:  
[sales@integrated-circuit.com](mailto:sales@integrated-circuit.com)

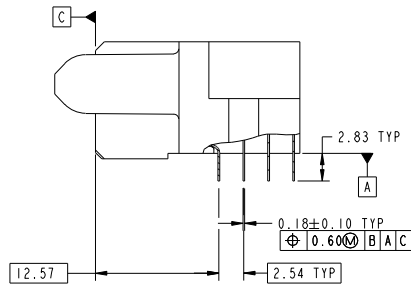


Tous droits strictement réservés. Reproduction ou communication à des tiers interdite sous quelque forme que ce soit sans autorisation écrite du propriétaire. Propriété de FCI. Droits de reproduction FCI.

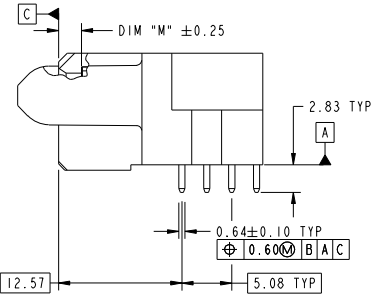
All rights strictly reserved. Reproduction or issue to third parties in any form whatever is not permitted without written authority from the proprietor. Property of FCI. Copyright FCI.



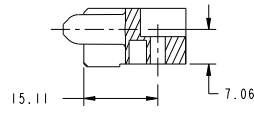
PRODUCT NUMBER  
51772-018...  
NOTE 3



BROKEN-OUT SECTION A-A  
SCALE 2:1



BROKEN-OUT SECTION B-B  
SCALE 2:1



SECTION C-C

mat'l code				SEE NOTE 2	tolerances unless otherwise specified	CUSTOMER	FCI	
ltr	ecm no.	dr	date	linear	0.X ± 0.5	COPY	www.fciconnect.com	
A					0.XX ± 0.25	projection	title	
					0.XXX ± 0.1		3P + 12S	
				angles	0° ± 2°		R/A SOLDER RECEPTACLE	
				dr	Warren Du 06/08/10		product family	
				enr	Warren Du 06/08/10		PwrBlade	
				chr	PM Zheeng 06/08/10		size	dwg no
				oppd	Joseph Hsiao 06/08/10		A	51772-018
sheet index	revision sheet					scale	1:1	code
								213 sheet 2 of 4
								cage code
								22526

Pro/E

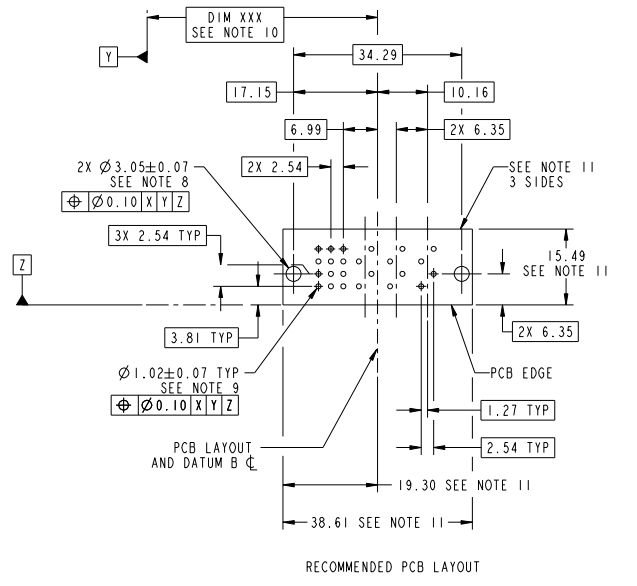
cage code 22526

Tous droits strictement réservés. Reproduction ou communication à des tiers interdite sous quelque forme que ce soit sans autorisation écrite du propriétaire. Propriété de FCI. Droits de reproduction FCI.



All rights strictly reserved. Reproduction or issue to third parties in any form whatever is not permitted without written authority from the proprietor. Property of FCI. Copyright FCI.

PRODUCT NUMBER  
51772-018...  
NOTE 3



mat'l code		SEE NOTE		tolerances unless otherwise specified		CUSTOMER	
lfr	ecm no.	dr	date	linear	0 . X ± 0 . 5	COPY	www.fciconnect.com
A				angles	0 . XX ± 0 . 25	projection	title
					0 . XXX ± 0 . 1	MM	3P + 12S
				dr	0° ± 2°	MM	R/A SOLDER RECEPTACLE
				engr	Warren Du 06/08/10	scale	product family
				chr	Warren Du 06/08/10	1:1	PwrBlade
				oppd	PM Zheng 06/08/10		size
					Joseph Hsia 06/08/10		dwg no
sheet index	revision sheet						A
							51772-018
							code
							213
							sheet
							3 of 4
							cage code
							22526

Tous droits strictement réservés. Reproduction ou communication à des tiers interdite sous quelque forme que ce soit sans autorisation écrite du propriétaire. Propriété de FCI. Droits de reproduction FCI.

All rights strictly reserved. Reproduction or issue to third parties in any form whatever is not permitted without written authority from the proprietor. Property of FCI. Copyright FCI.

**PRODUCT NUMBER**  
51772-018-  
NOTE 3

**NOTES:**

1. DIMENSIONS AND TOLERANCES ARE IN ACCORDANCE WITH ASME Y14.5M, 1994 UNLESS OTHERWISE SPECIFIED.

**CONNECTOR NOTES:**

- 2. HOUSING MATERIAL: UL 94 V-0 GLASS FILLED HIGH-TEMP THERMOPLASTIC  
POWER CONTACT MATERIAL: COPPER ALLOY  
SIGNAL PIN MATERIAL: COPPER ALLOY
- 3. PLATING:  
SEE ITEM 5 & 6 IN PRINT 10064183 FOR PLATING SPEC OF 51772-018 AND 51772-018LF RESPECTIVELY

4. MANUFACTURER'S NAME, DATE CODE AND OPTIONAL P/N TO APPEAR ON THIS SURFACE. THE P/N CAN BE OMITTED IF THERE IS NOT ENOUGH SPACE ON THIS SURFACE.

5. PRODUCT SPECIFICATION GS-12-149.  
APPLICATION SPECIFICATION BUS-20-067.

6. PACKAGED IN TRAYS.

**PCB NOTES:**

- 7. ALL HOLE DIAMETERS ARE FINISHED HOLE SIZE.
- 8. MOUNTING HOLES, WHERE APPLICABLE, ARE UNPLATED.
- 9.  $\varnothing 1.151 \pm 0.025$  DRILLED HOLES PLATED WITH 0.008 MIN SnPb OR Sn OVER 0.03 TO 0.08 Cu PLATING TO ACHIEVE  $\varnothing 1.02 \pm 0.07$  HOLE.
- 10. "DIM XXX" TO BE DETERMINED BY THE CUSTOMER.
- 11. CONNECTOR KEEP-OUT ZONE.
- 12. THE VOID CORING IN BETWEEN POWER MODULES, SIGNAL MODULES AND END MODULES ARE OPTIONAL AND THE SHAPE MAY BE DIFFERENT FOR OPTIMIZE THE MOLDING PROCESS. THE VOID CORING WILL NOT EFFECT TO PRODUCT FUNCTION.

mat'l code		SEE NOTE 2		tolerances unless otherwise specified		CUSTOMER		FCI		www.fciconnect.com	
ltr	ecm no.	dr	date	linear	0.X ± 0.5	COPY		projection		title	
A					0.XX ± 0.25	A		MM		3P + 12S	
				angles	0.XXX ± 0.1	MM		product family		PwrBlade	
				dr	0° ± 2°	scale		size		code	
				engr	Warren Du 06/08/10	1:1		dwg no		213	
				chr	Warren Du 06/08/10			A		sheet	
				oppd	PM Zheng 06/08/10			51772-018		4 of 4	
					Joseph Hsia 06/08/10						
sheet index	revision sheet										

Pro/E

cage code 22526