

Excellent Integrated System Limited

Stocking Distributor

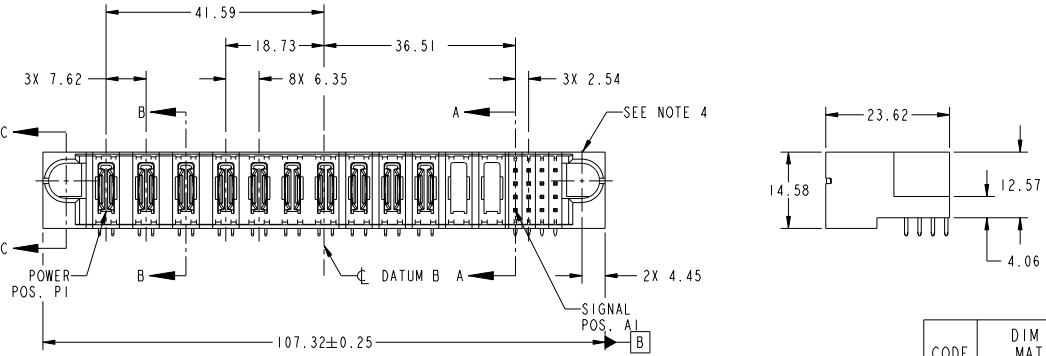
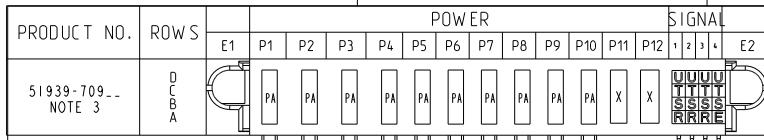
Click to view price, real time Inventory, Delivery & Lifecycle Information:

[FCI](#)

[51939-709LF](#)

For any questions, you can email us directly:

sales@integrated-circuit.com



CODE	DIM "M" MATING LENGTH	CONTACT TYPE
PA	[N/A]	POWER
U	[6.86]	SIGNAL
T	[6.86]	SIGNAL
S	[6.86]	SIGNAL
R	[6.86]	SIGNAL
E	[5.59]	SIGNAL
X	OMITTED	OMITTED

spec ref	*	dr	Weller Luo	2012-09-27	projection	MM	size	A4	scale	1:1										
tolerance std	TOLERANCES UNLESS OTHERWISE SPECIFIED	eng	Weller Luo	2012-11-30			ecn no	DG06-XXXX												
SEE NOTE		chr	-	-			rel level	Released												
surface	<table border="1"> <tr> <td>linear</td> <td>0.X</td> <td>±0.5</td> </tr> <tr> <td></td> <td>0.XX</td> <td>±0.25</td> </tr> <tr> <td></td> <td>0.XXX</td> <td>±0.1</td> </tr> <tr> <td>angular</td> <td>0°</td> <td>±2°</td> </tr> </table>	linear	0.X	±0.5		0.XX	±0.25		0.XXX	±0.1	angular	0°	±2°	appr	PM Zheng	2012-11-30	product family	PwrBlade		
linear	0.X	±0.5																		
	0.XX	±0.25																		
	0.XXX	±0.1																		
angular	0°	±2°																		
					part no	51939-709														
					cat. no.	-														
					product	Product - Customer Drw														
					sheet	1 of 4														

PAGE FILE - REV C - 2012-06-01

PDS: Rev :A

STATUS:Released

Printed: Dec 17, 2012



Copyright FCI.

PRODUCT NUMBER

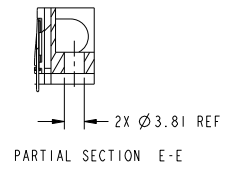
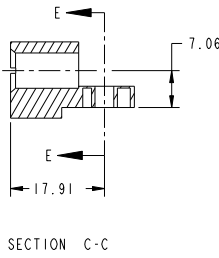
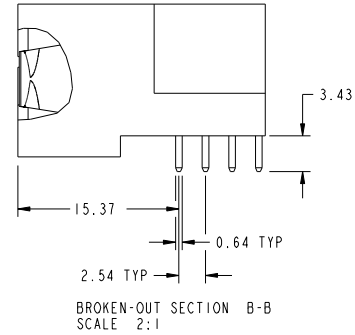
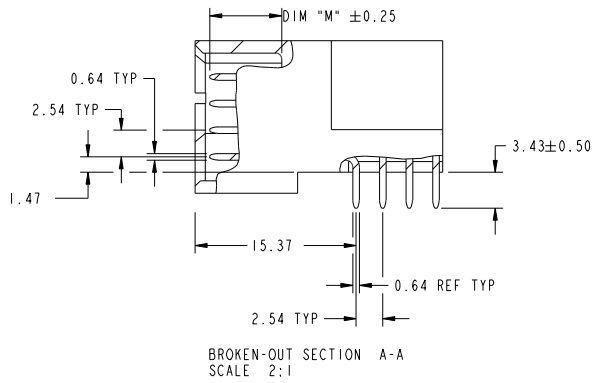
51939-709..
NOTE: 3

A

B

C

D



Copyright FCI.

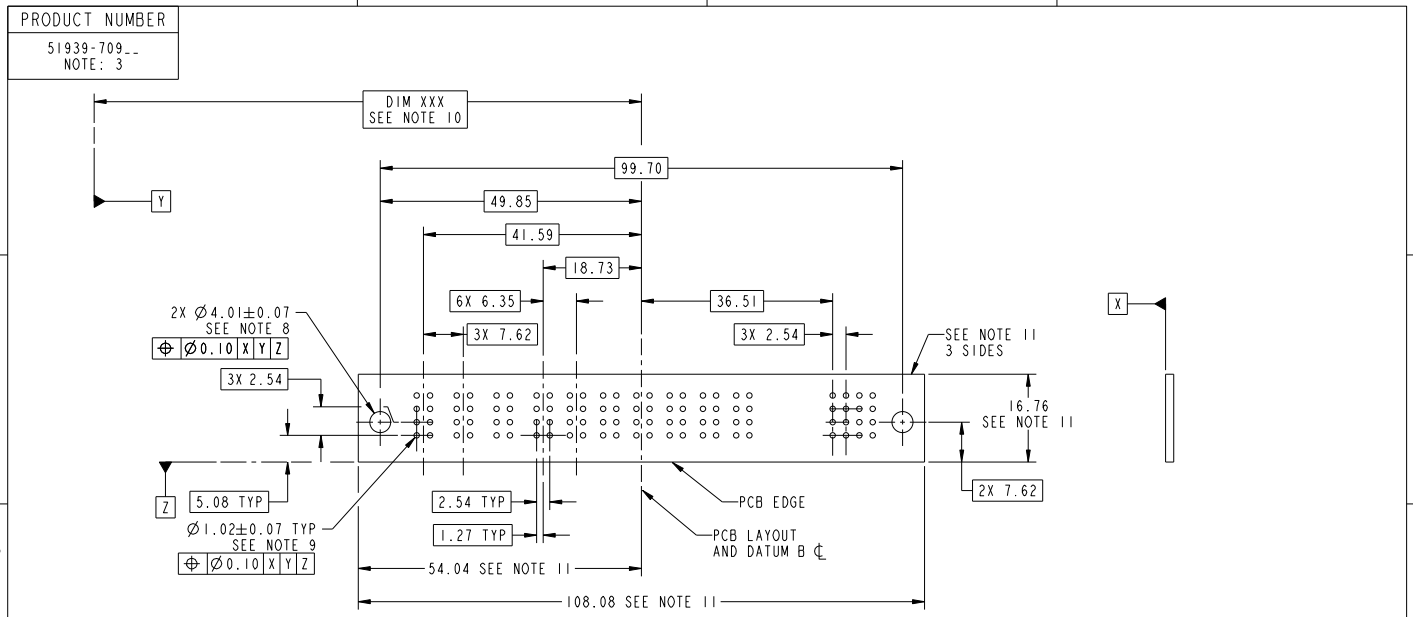
dr	Weller Luo	2012-09-27	projection	MM	size	A4	scale	1:1
eng	Weller Luo	2012-11-30			ecn no	DG06-XXXX		
chr	-	-			rel level	Released		
appr	PM Zheng	2012-11-30	product family	PwrBlade				
		title			dwg no		rev	
		12P + 16S			51939-709		A	
www.fci.com		cat. no.			Product - Customer Drw		sheet 2 of 4	

PAGE FILE - REV C - 2012-06-01

PDS: Rev :A

STATUS:Released

Printed: Dec 17, 2012



RECOMMENDED PCB LAYOUT

dr	Weller Luo	2012-09-27	projection	MM	size	A4	scale	1:1
eng	Weller Luo	2012-11-30			ecn no	DG06-XXXX		
chr	-	-			rel level	Released		
appr	PM Zheng	2012-11-30	product family	PwrBlade	rel level	Released		
				part no	51939-709		rev	A
www.fci.com				cat. no.	-	Product - Customer Drw		sheet 3 of 4

Page File - REV C - 2012-06-01

PRODUCT NUMBER

51939-709..
NOTE: 3

NOTES:

1. DIMENSIONS AND TOLERANCES ARE IN ACCORDANCE WITH ASME Y14.5M, 1994 UNLESS OTHERWISE SPECIFIED.

CONNECTOR NOTES:

2. HOUSING MATERIAL: UL 94 V-0 GLASS FILLED HIGH-TEMP THERMOPLASTIC
POWER CONTACT MATERIAL: COPPER ALLOY
SIGNAL PIN MATERIAL: COPPER ALLOY

3. SEE ITEM 1 & 2 IN PRINT 10064183 FOR PLATING SPEC OF 51939-709 AND 51939-709LF RESPECTIVELY.

4. MANUFACTURER'S NAME, DATE CODE AND OPTIONAL P/N TO APPEAR ON THIS SURFACE. THE MARK CAN BE OMITTED IF THERE IS NOT ENOUGH SPACE ON THIS SURFACE.

5. PRODUCT SPECIFICATION GS-12-149.
APPLICATION SPECIFICATION BUS-20-067.

6. PACKAGED IN TRAYS.

PCB NOTES:

7. ALL HOLE DIAMETERS ARE FINISHED HOLE SIZE.

8. MOUNTING HOLES, WHERE APPLICABLE, ARE UNPLATED.

9. $\varnothing 1.151 \pm 0.025$ DRILLED HOLES PLATED WITH
0.008 MIN SnPb OR Sn OVER 0.03
TO 0.08 Cu PLATING TO ACHIEVE
 $\varnothing 1.02 \pm 0.07$ HOLE.

10. "DIM XXX" TO BE DETERMINED BY THE CUSTOMER.

11. CONNECTOR KEEP-OUT ZONE.



Copyright FCI.

dr	Weller Luo	2012-09-27	projection		MM	size	A4	scale	1:1
eng	Weller Luo	2012-11-30	chr			-	ecn no	DG06-XXXX	
appr	PM Zheng	2012-11-30	product family	PwrBlade		rel level	Released		
			12P + 16S				51939-709		rev A
www.fci.com			cat. no.	Product - Customer Drw			sheet 4 of 4		

Prod File - REV C - 2009-06-09