

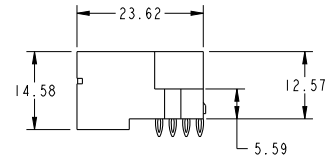
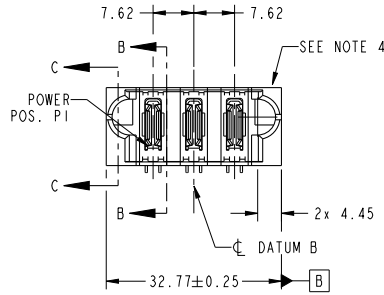
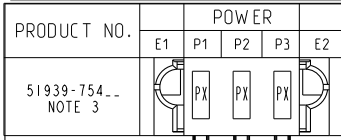
Excellent Integrated System Limited

Stocking Distributor

Click to view price, real time Inventory, Delivery & Lifecycle Information:

[FCI](#)
[51939-754LF](#)

For any questions, you can email us directly:
sales@integrated-circuit.com



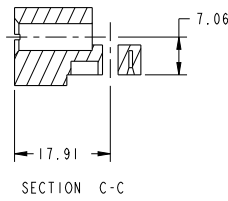
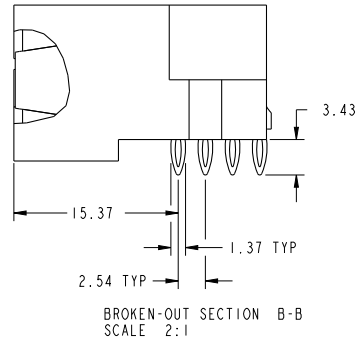
Copyright FCI.

spec ref	*	dr	Luo Weller	2013/04/11	projection	MM	size	A4	scale	1:1																															
tolerance std	TOLERANCES UNLESS OTHERWISE SPECIFIED	eng	Luo Weller	2013/04/23			ecn no	-	rel level	Released																															
SEE NOTE		chr	-	-			product family	PwrBlade																																	
surface	<table border="1"> <tr> <td>linear</td> <td>0.X</td> <td>±0.5</td> </tr> <tr> <td></td> <td>0.XX</td> <td>±0.25</td> </tr> <tr> <td></td> <td>0.XXX</td> <td>±0.1</td> </tr> <tr> <td>angular</td> <td>0°</td> <td>±2°</td> </tr> </table>	linear	0.X	±0.5		0.XX	±0.25		0.XXX	±0.1	angular	0°	±2°	appr	Pei-Ming Zheng	2013/04/23		<table border="1"> <tr> <td>3ACP</td> <td>RIGHT PRESS-FIT HEADER</td> </tr> </table>	3ACP	RIGHT PRESS-FIT HEADER	<table border="1"> <tr> <td>cat. no.</td> <td>-</td> </tr> </table>	cat. no.	-	<table border="1"> <tr> <td>Product - Customer Drw</td> <td>sheet 1 of 4</td> </tr> </table>	Product - Customer Drw	sheet 1 of 4	<table border="1"> <tr> <td>www.fci.com</td> <td></td> </tr> </table>	www.fci.com		<table border="1"> <tr> <td>cat. no.</td> <td>-</td> </tr> </table>	cat. no.	-	<table border="1"> <tr> <td>Product - Customer Drw</td> <td>sheet 1 of 4</td> </tr> </table>	Product - Customer Drw	sheet 1 of 4	<table border="1"> <tr> <td>rel level</td> <td>Released</td> </tr> </table>	rel level	Released	<table border="1"> <tr> <td>rev</td> <td>A</td> </tr> </table>	rev	A
linear	0.X	±0.5																																							
	0.XX	±0.25																																							
	0.XXX	±0.1																																							
angular	0°	±2°																																							
3ACP	RIGHT PRESS-FIT HEADER																																								
cat. no.	-																																								
Product - Customer Drw	sheet 1 of 4																																								
www.fci.com																																									
cat. no.	-																																								
Product - Customer Drw	sheet 1 of 4																																								
rel level	Released																																								
rev	A																																								
							51939-754																																		

Print File - REV C - 2009-08-09

PRODUCT NUMBER

51939-754_
NOTE: 3



dr	Luo Weller	2013/04/11	projection	MM	size	A4	scale	1:1
eng	Luo Weller	2013/04/23			ecn no	-	rel level	
chr	-	-			product family	PwrBlade	Released	
appr	Pei-Ming Zheng	2013/04/23				title	3ACP	dwg no
www.fci.com			cat. no.			-		Product - Customer Drw
						rev	51939-754	A
						sheet 2 of 4		

Print File - REV C - 2009-08-09

PDS: Rev :A

STATUS:Released

Printed: Apr 25, 2013



Copyright FCI.

PRODUCT NUMBER

51939-754_
NOTE: 3

NOTES:

1. DIMENSIONS AND TOLERANCES ARE IN ACCORDANCE WITH ASME Y14.5M, 1994 UNLESS OTHERWISE SPECIFIED.

CONNECTOR NOTES:

- 2. HOUSING MATERIAL: UL 94 V-0 GLASS FILLED HIGH-TEMP THERMOPLASTIC
POWER CONTACT MATERIAL: COPPER ALLOY
SIGNAL PIN MATERIAL: COPPER ALLOY
- 3. SEE ITEM 3 & 4 IN PRINT 10064183 FOR PLATING SPEC OF 51939-754 AND 51939-754LF RESPECTIVELY.

4. MANUFACTURER'S NAME, DATE CODE AND OPTIONAL P/N TO APPEAR ON THIS SURFACE. THE MARK CAN BE OMITTED IF THERE IS NOT ENOUGH SPACE ON THIS SURFACE.

5. PRODUCT SPECIFICATION GS-12-149.
APPLICATION SPECIFICATION BUS-20-067.

6. PACKAGED IN TRAYS.

PCB NOTES:

7. ALL HOLE DIAMETERS ARE FINISHED HOLE SIZE.

8. MOUNTING HOLES, WHERE APPLICABLE, ARE UNPLATED.

9. $\varnothing 1.151 \pm 0.025$ DRILLED HOLES PLATED WITH
0.008 MIN SnPb OR Sn OVER 0.03
TO 0.08 Cu PLATING TO ACHIEVE
 $\varnothing 1.02 \pm 0.07$ HOLE.

10. CONNECTOR KEEP-OUT ZONE.

dr	Luo Weller	2013/04/11	projection		MM	size	A4	scale	1:1	
eng	Luo Weller	2013/04/23	chr			-	ecn no	-		
appr	Pei-Ming Zheng	2013/04/23	product family	PwrBlade		rel level	Released			
			title	3ACP RIGHT PRESS-FIT HEADER		dwg no	51939-754		rev	A
www.fci.com			cat. no.	-			Product - Customer Drw		sheet 4 of 4	

Print File - REV C - 2009-06-09



Copyright FCI.