

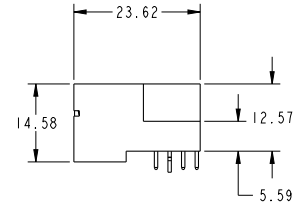
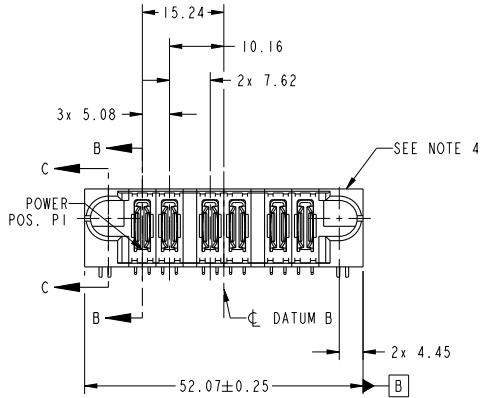
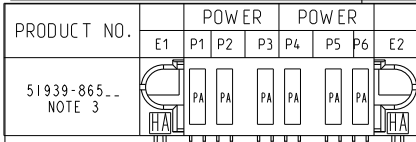
Excellent Integrated System Limited

Stocking Distributor

Click to view price, real time Inventory, Delivery & Lifecycle Information:

[FCI](#)
[51939-865LF](#)

For any questions, you can email us directly:
sales@integrated-circuit.com



Copyright FCI.

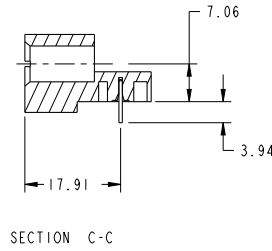
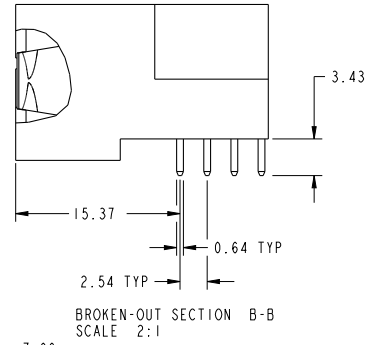
CODE	DIM "M" MATING LENGTH	CONTACT TYPE
PA	[N/A]	POWER
HA	[N/A]	HOLD-DOWN

spec ref	*	dr	De-Ming Lu	2014/04/22	projection	MM	size	A4	scale	1:1
tolerance std	ASME Y14.5	eng	De-Ming Lu	2014/05/14			ec n no	ELX-DG-17677-1	Released	rev B
TOLERANCES UNLESS OTHERWISE SPECIFIED		chr	-	appr			Pei-Ming Zheng	2014/05/15		
surface	ASME Y14.5	linear	0.X	±0.5	product family	PwrBlade	rel level	Released	www.fci.com cat. no. - Product - Customer Drw sheet 1 of 4	
		angular	0°	±2°	6P	RIGHT ANGLE SOLDER HEADER	rel level	Released	www.fci.com cat. no. - Product - Customer Drw sheet 1 of 4	

Print File - REV C - 2009-08-09

PRODUCT NUMBER

51939-865_
NOTE: 3



dr	De-Ming Lu	2014/04/22	projection	MM	size	A4	scale	1:1
eng	De-Ming Lu	2014/05/14			ecn no	ELX-DG-17677-1		
chr	-	-			product family	PwrBlade	rel level	Released
appr	Pei-Ming Zheng	2014/05/15			title	6P		rev
www.fci.com					cat. no.	-		Product - Customer Drw
					dwg no	51939-865		sheet 2 of 4

Print File - REV C - 2009-08-09

PDS: Rev :B

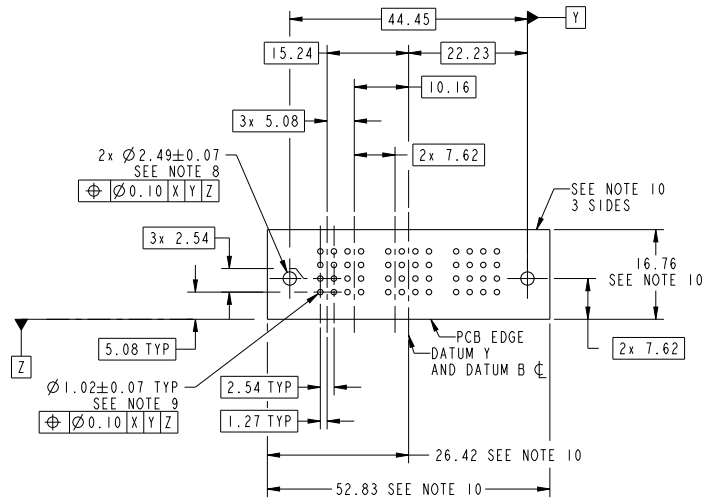
STATUS:Released

Printed: May 15, 2014



Copyright FCI.

PRODUCT NUMBER
51939-865...
NOTE: 3



RECOMMENDED PCB LAYOUT

dr	De-Ming Lu	2014/04/22	projection	MM	size	A4	scale	1:1	
eng	De-Ming Lu	2014/05/14			ec n no	ELX-DG-17677-1			
chr	-	-	product family	PwrBlade		rel level	Released		
appr	Pei-Ming Zheng	2014/05/15				title	6P		
						RIGHT ANGLE SOLDER HEADER			dwg no
www.fci.com			cat. no.	-			Product - Customer Drw	rev	B
							sheet 3 of 4		

Print File : REV C - 2009-06-09



Copyright FCI.

PRODUCT NUMBER

51939-865_..
NOTE: 3

NOTES:

1. DIMENSIONS AND TOLERANCES ARE IN ACCORDANCE WITH ASME Y14.5M, 1994 UNLESS OTHERWISE SPECIFIED.

CONNECTOR NOTES:

2. HOUSING MATERIAL: UL 94 V-0 GLASS FILLED HIGH-TEMP THERMOPLASTIC
POWER CONTACT MATERIAL: COPPER ALLOY
SIGNAL PIN MATERIAL: COPPER ALLOY

3. SEE ITEM 1 & 2 IN PRINT 10064183 FOR PLATING SPEC OF 51939-865 AND 51939-865LF RESPECTIVELY.

4. MANUFACTURER'S NAME, DATE CODE AND OPTIONAL P/N TO APPEAR ON THIS SURFACE. THE MARK CAN BE OMITTED IF THERE IS NOT ENOUGH SPACE ON THIS SURFACE.

5. PRODUCT SPECIFICATION GS-12-149.
APPLICATION SPECIFICATION BUS-20-067.

6. PACKAGED IN TRAYS.

PCB NOTES:

7. ALL HOLE DIAMETERS ARE FINISHED HOLE SIZE.

8. MOUNTING HOLES, WHERE APPLICABLE, ARE UNPLATED.

9. $\varnothing 1.151 \pm 0.025$ DRILLED HOLES PLATED WITH
0.008 MIN SnPb OR Sn OVER 0.03
TO 0.08 Cu PLATING TO ACHIEVE
 $\varnothing 1.02 \pm 0.07$ HOLE.

10. CONNECTOR KEEP-OUT ZONE.

dr	De-Ming Lu	2014/04/22	projection		MM	size	A4	scale	1:1	
eng	De-Ming Lu	2014/05/14	chr			-	ec n no	ELX-DG-17677-1		
appr	Pei-Ming Zheng	2014/05/15	product family	PwrBlade		rel level	Released			
			title	6P		dwg no	51939-865		rev	B
www.fci.com			cat. no.	-		Product - Customer Drw		sheet 4 of 4		

Print File - REV C - 2009-06-09



Copyright FCI.