

## Excellent Integrated System Limited

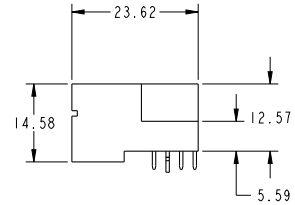
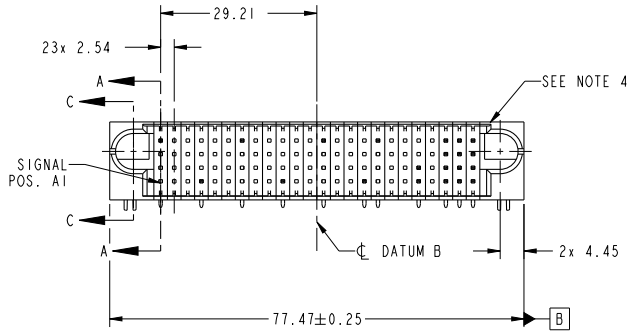
Stocking Distributor

Click to view price, real time Inventory, Delivery & Lifecycle Information:

[FCI](#)  
[51939-904LF](#)

For any questions, you can email us directly:  
[sales@integrated-circuit.com](mailto:sales@integrated-circuit.com)

PRODUCT NO.	ROWS	SIGNAL																							
		E1	1	2	3	4	5	6	7	8	9	10	11	12	13	14	15	16	17	18	19	20	21	22	23
51939-904.. NOTE 3	D C B A																								



CODE	DIM "M" MATING LENGTH	CONTACT TYPE
H	[5.59]	SIGNAL
E	[5.59]	SIGNAL
R	[6.86]	SIGNAL
S	[6.86]	SIGNAL
G	[5.59]	SIGNAL
F	[5.59]	SIGNAL
HA	[N/A]	HOLD-DOWN

spec ref	*	dr	Luo Weller	2014/07/13	projection	MM	size	A4	scale	1:1
tolerance std	ASME Y14.5	TOLERANCES UNLESS OTHERWISE SPECIFIED	eng	Luo Weller	2014/07/28		ecn no	-	rel level	Released
surface	ASME Y14.5	linear	0.X	±0.5	appr					
		angular	0°	±2°	www.fci.com	96S	96S	RIGHT ANGLE SOLDER HEADER	cat. no.	-
							Product - Customer Drw	sheet 1 of 4		

Print File - REV C - 2009-08-09

1

2

3

PDS: Rev :A

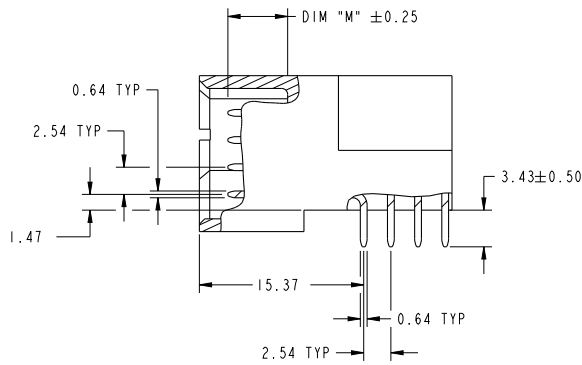
STATUS:Released

Printed: Jul 28, 2014

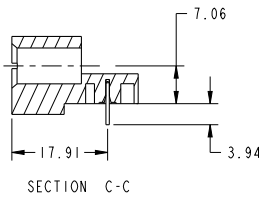


Copyright FCI.

PRODUCT NUMBER  
51939-904\_  
NOTE: 3



BROKEN-OUT SECTION A-A  
SCALE 2:1



dr	Luo Weller	2014/07/13	projection	MM	size	A4	scale	1:1			
eng	Luo Weller	2014/07/28			ecn no	-	rel level				
chr	-	-			product family	PwrBlade	Released				
appr	Pei-Ming Zheng	2014/07/28				title	96S	dwg no	51939-904	rev	A
www.fci.com			cat. no.	-	Product - Customer Drw			sheet 2 of 4			

Print File : REV C - 2009-08-09

PDS: Rev :A

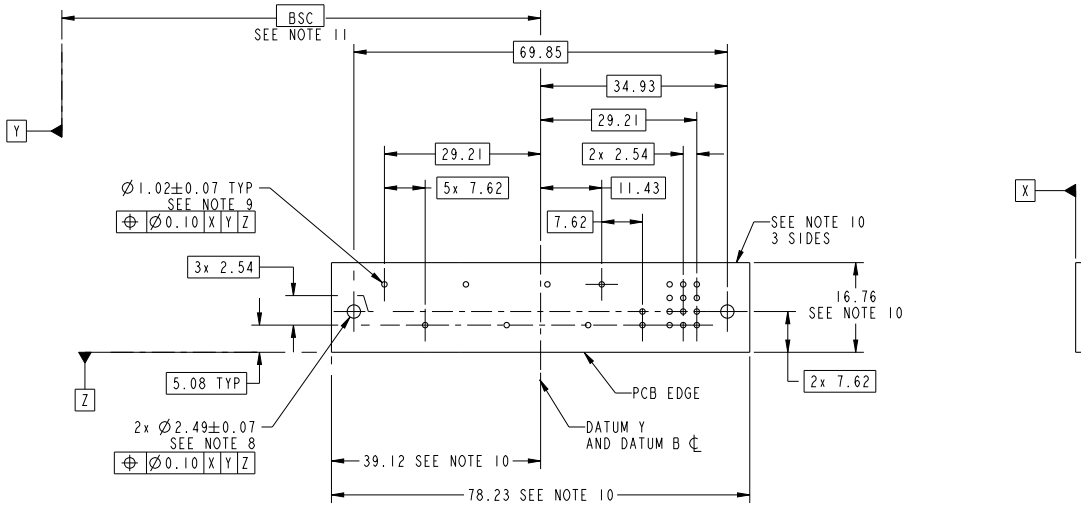
STATUS:Released

Printed: Jul 28, 2014



Copyright FCI.

PRODUCT NUMBER  
51939-904...  
NOTE: 3



RECOMMENDED PCB LAYOUT

dr	Luo Weller	2014/07/13	projection	MM	size	A4	scale	1:1
eng	Luo Weller	2014/07/28			ecn no	-	rel level	Released
chr	-	-			product family	PwrBlade		
appr	Pei-Ming Zheng	2014/07/28			date	96S	dwg no	51939-904
www.fci.com					title	RIGHT ANGLE SOLDER HEADER	rev	A
cat. no.			-		Product - Customer Drw			sheet 3 of 4

Print File - REV C - 2009-06-09

PRODUCT NUMBER

51939-904\_  
NOTE: 3

NOTES:

1. DIMENSIONS AND TOLERANCES ARE IN ACCORDANCE WITH ASME Y14.5M, 1994 UNLESS OTHERWISE SPECIFIED.

CONNECTOR NOTES:

- 2. HOUSING MATERIAL: UL 94 V-0 GLASS FILLED HIGH-TEMP THERMOPLASTIC  
POWER CONTACT MATERIAL: COPPER ALLOY  
SIGNAL PIN MATERIAL: COPPER ALLOY
  - 3. SEE ITEM 1 & 2 IN PRINT 10064183 FOR PLATING SPEC OF 51939-904 AND 51939-904LF RESPECTIVELY.
  - 4. MANUFACTURER'S NAME, DATE CODE AND OPTIONAL P/N TO APPEAR ON THIS SURFACE. THE MARK CAN BE OMITTED IF THERE IS NOT ENOUGH SPACE ON THIS SURFACE.
  - 5. PRODUCT SPECIFICATION GS-12-149.  
APPLICATION SPECIFICATION BUS-20-067.
  - 6. PACKAGED IN TRAYS.
- PCB NOTES:
- 7. ALL HOLE DIAMETERS ARE FINISHED HOLE SIZE.
  - 8. MOUNTING HOLES, WHERE APPLICABLE, ARE UNPLATED.
  - 9.  $\varnothing 1.151 \pm 0.025$  DRILLED HOLES PLATED WITH 0.008 MIN SnPb OR Sn OVER 0.03 TO 0.08 Cu PLATING TO ACHIEVE  $\varnothing 1.02 \pm 0.07$  HOLE.
  - 10. CONNECTOR KEEP-OUT ZONE.
  - 11. DATUM AND BASIC DIMENSIONS ARE ESTABLISHED BY CUSTOMER.

dr	Luo Weller	2014/07/13	projection		MM	size	A4	scale	1:1	
eng	Luo Weller	2014/07/28	chr			-	ecn no	-		
appr	Pei-Ming Zheng	2014/07/28	product family	PwrBlade		rel level	Released			
			title	96S		dwg no	51939-904		rev	A
www.fci.com			cat. no.	-		Product - Customer Drw		sheet 4 of 4		

Print File - REV C - 2009-06-09



Copyright FCI.