

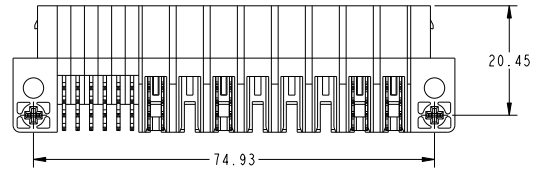
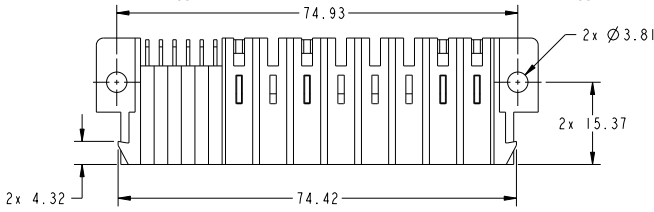
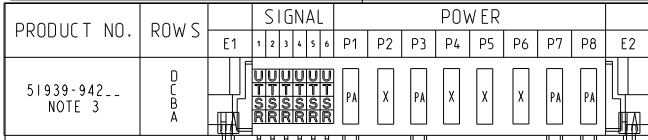
Excellent Integrated System Limited

Stocking Distributor

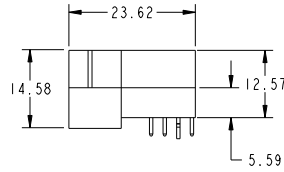
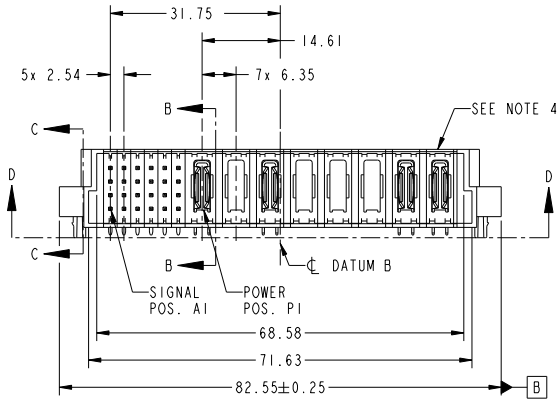
Click to view price, real time Inventory, Delivery & Lifecycle Information:

[FCI](#)
[51939-942LF](#)

For any questions, you can email us directly:
sales@integrated-circuit.com



VIEW D-D



CODE	DIM "M" MATING LENGTH	CONTACT TYPE
U	[6.86]	SIGNAL
T	[6.86]	SIGNAL
S	[6.86]	SIGNAL
R	[6.86]	SIGNAL
PA	[N/A]	POWER
HA	[N/A]	HOLD-DOWN
X		OMITTED

spec ref	*	dr	De-Ming Lu	2014/12/12	projection	MM	size	A4	scale	1:1
tolerance std	ASME Y14.5	eng	De-Ming Lu	2014/12/29		PwrBlade	ec n no	-	rel level	Released
surface	ASME Y14.5	chr	-	appr			Pei-Ming Zheng	2014/12/29	product family	
linear	0.X ±0.5				24S + 8P RIGHT ANGLE SOLDER HEADER		51939-942		rev A	
linear	0.XX ±0.25									
linear	0.XXX ±0.1									
angular	0° ±2°	www.fci.com	cat. no.	-	Product - Customer Drw			sheet 1 of 4		

PAGE FILE : REV C - 2014-08-09

1

2

3

PDS: Rev :A

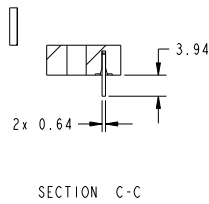
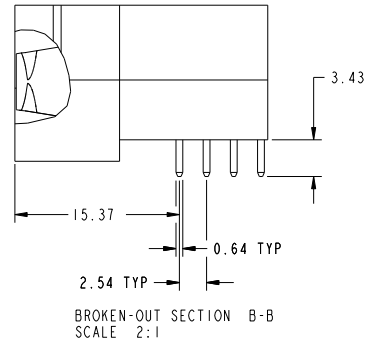
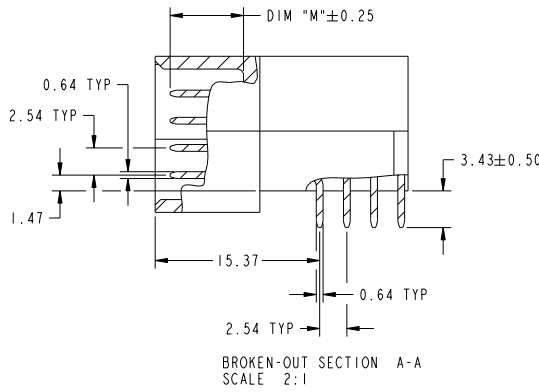
STATUS:Released

Printed: Dec 31, 2014



Copyright FCI.

PRODUCT NUMBER
51939-942...
NOTE: 3



dr	De-Ming Lu	2014/12/12	projection	MM	size	A4	scale	1:1
eng	De-Ming Lu	2014/12/29			ecn no	-		
chr	-	-	product family	PwrBlade	rel level	Released		
appr	Pei-Ming Zheng	2014/12/29			www.fci.com	cat. no.	-	Product - Customer Drw
		title 24S + 8P RIGHT ANGLE SOLDER HEADER	product family PwrBlade	product no 51939-942	rev A			

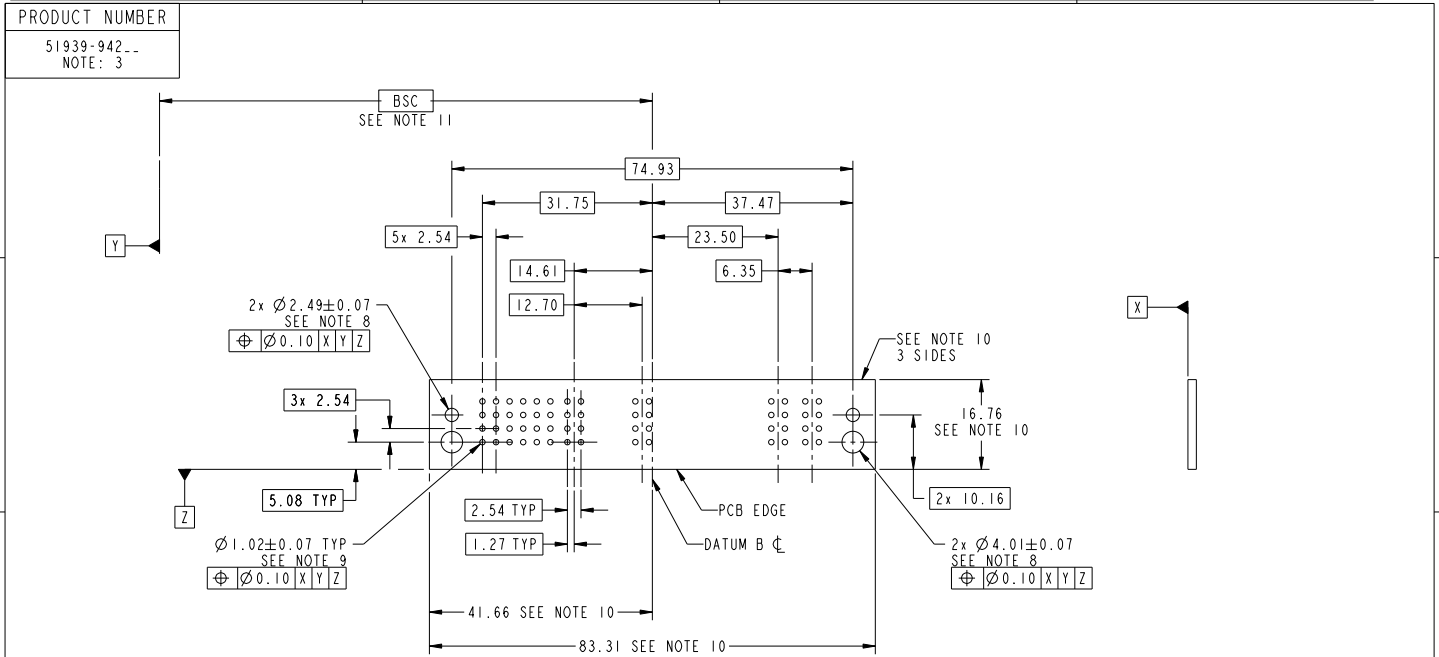
Part File : REV C - 2014-06-09

PDS: Rev :A

STATUS:Released

Printed: Dec 31, 2014

Copyright FCI.



RECOMMENDED PCB LAYOUT

dr	De-Ming Lu	2014/12/12	projection	MM	size	A4	scale	1:1
eng	De-Ming Lu	2014/12/29			ecn no	-		
chr	-	-	product family	PwrBlade	rel level	Released		
appr	Pei-Ming Zheng	2014/12/29	www.fci.com		title	24S + 8P RIGHT ANGLE SOLDER HEADER		rev
		cat. no.	-		Product - Customer Drw	51939-942	rev	A
						sheet 3 of 4		

Part File : REV C - 2014-01-09

1

2

3

PDS: Rev :A

STATUS:Released

Printed: Dec 31, 2014



Copyright FCI.

PRODUCT NUMBER

51939-942--
NOTE: 3

NOTES:

1. DIMENSIONS AND TOLERANCES ARE IN ACCORDANCE WITH ASME Y14.5M, 1994 UNLESS OTHERWISE SPECIFIED.

CONNECTOR NOTES:

- 2. HOUSING MATERIAL: UL 94 V-0 GLASS FILLED HIGH-TEMP THERMOPLASTIC
POWER CONTACT MATERIAL: COPPER ALLOY
SIGNAL PIN MATERIAL: COPPER ALLOY
 - 3. SEE ITEM 1 & 2 IN PRINT 10064183 FOR PLATING SPEC OF 51939-942 AND 51939-942LF RESPECTIVELY.
 - 4. MANUFACTURER'S NAME, DATE CODE AND OPTIONAL P/N TO APPEAR ON THIS SURFACE. THE MARK CAN BE OMITTED IF THERE IS NOT ENOUGH SPACE ON THIS SURFACE.
 - 5. PRODUCT SPECIFICATION GS-12-149.
APPLICATION SPECIFICATION BUS-20-067.
 - 6. PACKAGED IN TRAYS.
- PCB NOTES:
- 7. ALL HOLE DIAMETERS ARE FINISHED HOLE SIZE.
 - 8. MOUNTING HOLES, WHERE APPLICABLE, ARE UNPLATED.
 - 9. $\varnothing 1.151 \pm 0.025$ DRILLED HOLES PLATED WITH 0.008 MIN SnPb OR Sn OVER 0.03 TO 0.08 Cu PLATING TO ACHIEVE $\varnothing 1.02 \pm 0.07$ HOLE.
 - 10. CONNECTOR KEEP-OUT ZONE.
 - 11. DATUM AND BASIC DIMENSIONS ARE ESTABLISHED BY CUSTOMER.

dr	De-Ming Lu	2014/12/12	projection 	MM ←→	size	A4	scale	1:1	
eng	De-Ming Lu	2014/12/29			ec n no	-			
chr	-	-			rel level	Released			
appr	Pei-Ming Zheng	2014/12/29	product family	PwrBlade	rel level	Released			
		title	24S + 8P RIGHT ANGLE SOLDER HEADER		dwg no	51939-942		rev	A
www.fci.com		cat. no.	-		Product - Customer Drw			sheet 4 of 4	

PAVE File - REV C - 2009-06-09

