

Excellent Integrated System Limited

Stocking Distributor

Click to view price, real time Inventory, Delivery & Lifecycle Information:

[FCI](#)
[51940-130LF](#)

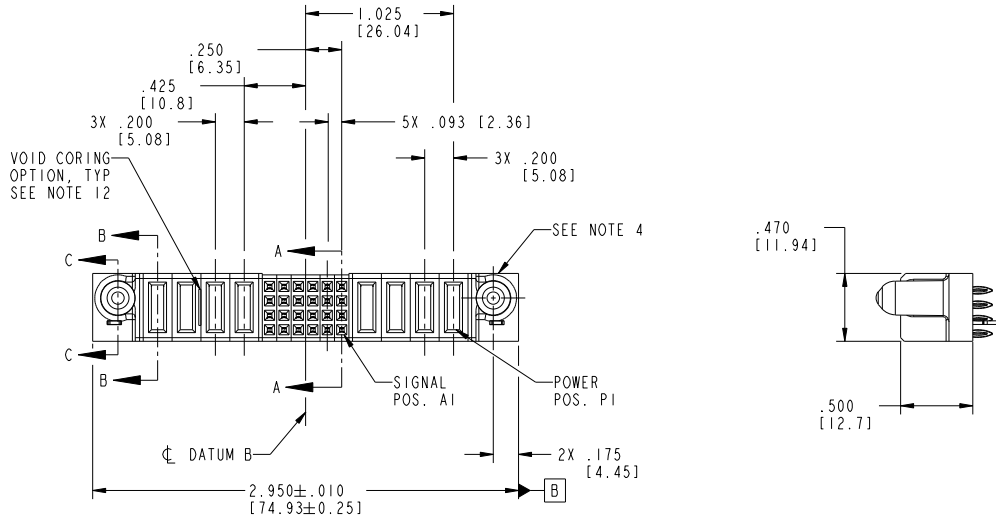
For any questions, you can email us directly:
sales@integrated-circuit.com

Tous droits strictement réservés. Reproduction ou communication à des tiers interdite sans quelque forme que ce soit sans autorisation écrite du propriétaire. Propriété de c FCI. Droits de reproduction FCI.



All rights strictly reserved. Reproduction or issue to third parties in any form whatsoever is not permitted without written authority from the proprietor. Property of FCI. Copyright FCI.

PRODUCT NO.	ROWS	POWER				SIGNAL				POWER				E1			
		E2	P8	P7	P6	P5	6	5	4	3	2	1	P4		P3	P2	P1
51940-130- NOTE: 3	D C B A																



CODE	DIM "M" MATING LENGTH	CONTACT TYPE
PC	[1.07]	POWER
F	[N/A]	SIGNAL
HA	[N/A]	HOLD-DOWN

mat'l code		SEE NOTE 2	tolerances unless otherwise specified		CUSTOMER	www.fciconnect.com	
ltr	ecn no.	dr	date	linear	COPY		
A	D605-0042	SLUO	3/12/05	.XX±.01/0.X±0.3	projection	title	
B	D608-0247	W D	09/08/08	.XXX±.005/0.XX±0.13		4P + 24S + 4P VERTICAL PF RECEPT	
				angles		product family	code
				dr	INCH/MM	PwrBlade	213
				enr	scale	size	sheet
				chr	1:1	dwg no	1 of 4
				appd		A 51940-130	
sheet index	revision	B	B	B			
	sheet	1	2	3			

1 | 2

Pro/E

PDM: Rev: B

STATUS: Released Printed: Dec 20, 2010

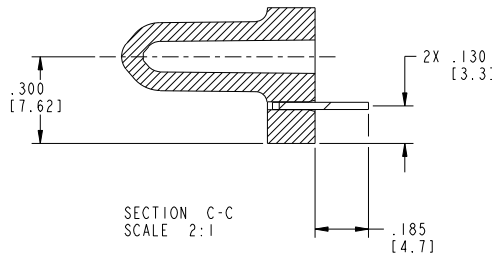
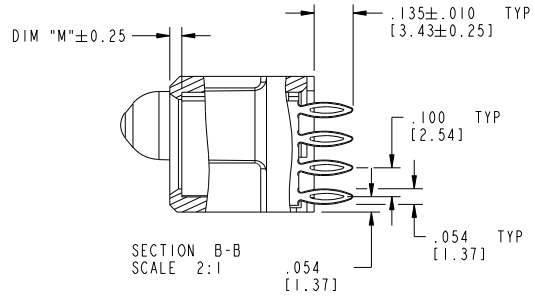
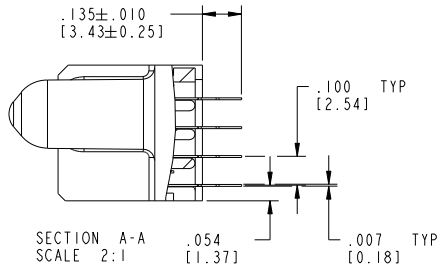
B

Tous droits strictement réservés. Reproduction ou communication à des tiers interdite sous quelque forme que ce soit sans autorisation écrite du propriétaire. Propriété de c FCI. Droits de reproduction FCI.



All rights strictly reserved. Reproduction or issue to third parties in any form whatsoever is not permitted without written authority from the proprietor. Property of FCI. Copyright FCI.

PRODUCT NUMBER
51940-130_



mat'l code		SEE NOTE 2		tolerances unless otherwise specified		CUSTOMER		FCI	
ltr	ech no.	dr	date	linear	.XX±.01/0.X±0.3	projection	COPY	www.fciconnect.com	
B				angles	.XXX±.005/0.XX±0.13		title	4P + 24S + 4P	
				dr	.XXX±.0020/0.XXX±0.051		INCH/MM	VERTICAL PF RECEPT	product family
				enr	0°±?	scale	size	dwg no	code
				chr		1:1	A	51940-130	213
				appd	Joseph Hsia				sheet
sheet index	revision sheet								2 of 4

1 | 2

Pro/E

PDM: Rev: B

STATUS: Released

Printed: Dec 20, 2010

1 | 2

3 |

4

A

A

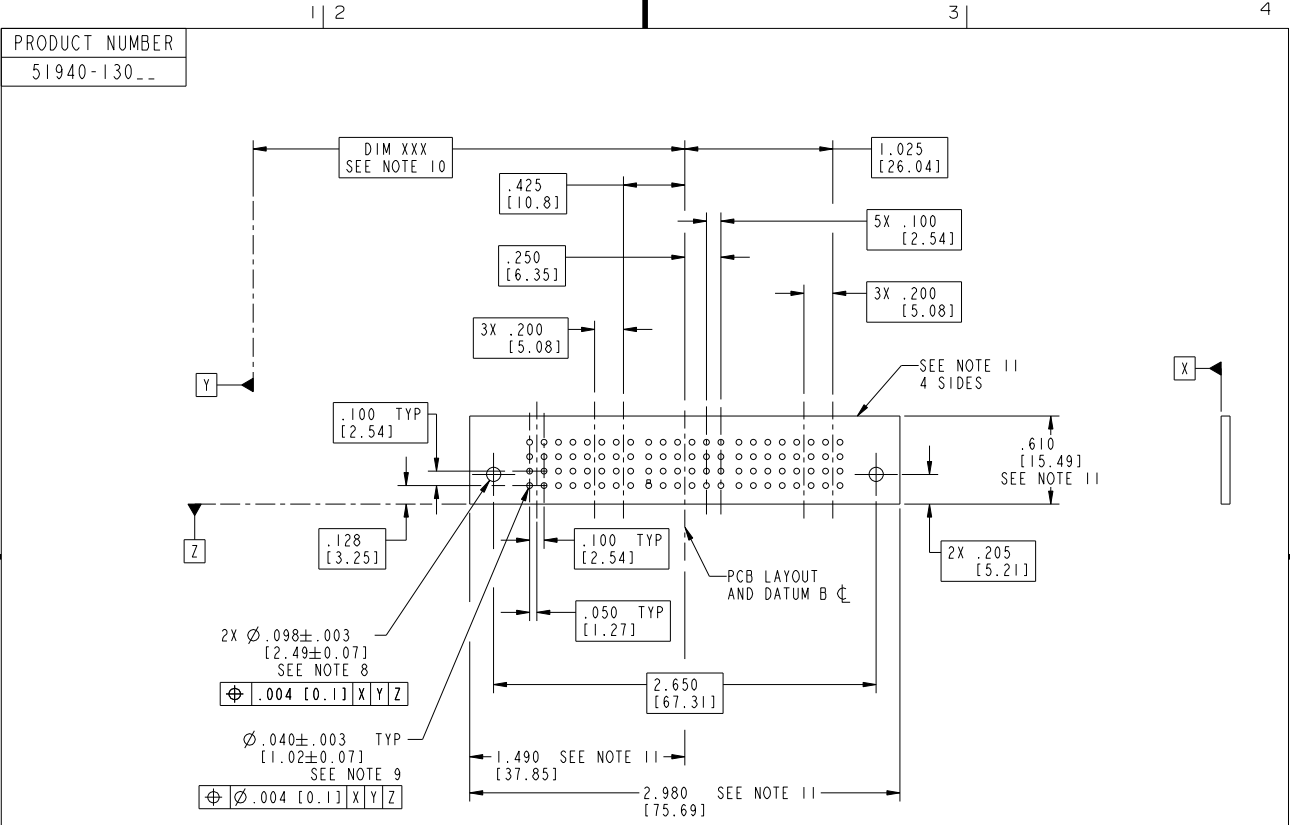
B

B

Tous droits strictement réservés. Reproduction ou communication à des tiers interdite sans que chaque forme que ce soit sans autorisation écrite du propriétaire. Propriété de c FCI. Droits de reproduction FCI.



All rights strictly reserved. Reproduction or issue to third parties, in any form whatsoever is not permitted without written authority from the proprietor. Property of FCI. Copyright FCI.



RECOMMENDED PCB LAYOUT

mat'l code				SEE NOTE 2		tolerances unless otherwise specified		CUSTOMER		FCI	
ltr	ecn no.	dr	date	linear	.XX±.01/0.X±0.3	projection	COPY		www.fciconnect.com		
B				angles	.XXX±.005/0.XX±0.13		title		4P + 24S + 4P		
				dr	XXXX±.0020/0.XXX±0.051		product family		PwrBlade		
				enr	0°±?	INCH/MM		size		code	
				chr		scale		A		213	
				appd	Joseph Hsia 3/12/05	1:1		51940-130		sheet	
sheet index	revision sheet										3 of 4

1 | 2

Pro/E

PDM: Rev: B

STATUS: **Released**

Printed: Dec 20, 2010

1 | 2

3 |

4

A

A

B

B

1 | 2

3 |

4

PRODUCT NUMBER
51940-130_

NOTES:

1. DIMENSIONS AND TOLERANCES ARE IN ACCORDANCE WITH ASME Y14.5M, 1994 UNLESS OTHERWISE SPECIFIED.

CONNECTOR NOTES:

- ② HOUSING MATERIAL: UL 94 V-0 GLASS FILLED HIGH-TEMP THERMOPLASTIC
 POWER CONTACT MATERIAL: COPPER ALLOY
 SIGNAL PIN MATERIAL: COPPER ALLOY
- ⚠ 3. PLATING SPEC.
 51940-130, 51940-130LF PLATING SPEC. WAS SHOWN IN THE PRINT OF 10064183.
- ④ MANUFACTURER'S NAME, P/N, AND DATE CODE TO APPEAR ON THIS SURFACE.
- 5. PRODUCT SPECIFICATION GS-12-149.
 APPLICATION SPECIFICATION BUS-20-067.
- 6. PACKAGED IN TRAYS.
- PCB NOTES:
- 7. ALL HOLE DIAMETERS ARE FINISHED HOLE SIZE.
- ⑧ MOUNTING HOLES, WHERE APPLICABLE, ARE UNPLATED.
- ⑨ $\varnothing 1.151 \pm 0.025$ DRILLED HOLES PLATED WITH
 0.008 MIN SnPb OR Sn OVER 0.03
 TO 0.08 Cu PLATING TO ACHIEVE
 $\varnothing 1.02 \pm 0.07$ HOLE.
- ⑩ "DIM XXX" TO BE DETERMINED BY THE CUSTOMER.
- ⑪ CONNECTOR KEEP-OUT ZONE.
- 12. THE VOID CORING IN BETWEEN POWER MODULES, SIGNAL MODULES AND END MODULES ARE OPTIONAL AND THE SHAPE MAY BE DIFFERENT FOR OPTIMIZE THE MOLDING PROCESS. THE VOID CORING WILL NOT EFFECT TO PRODUCT FUNCTION.
- 13. A/B SYMBOL WILL BE NEXT TO ANY DIMENSION, VIEW, OR NOTE WHICH HAS BEEN MODIFIED WITH THE CURRENT DRAWING REVISION.

mat'l code		SEE NOTE 2		tolerances unless otherwise specified		CUSTOMER		FCI		www.fciconnect.com	
ltr	ecn no.	dr	date	linear	.XX±.01/0.X±0.3	projection	COPY	title	4P + 24S + 4P		
B					.XXX±.005/0.XX±0.13			VERTICAL PF RECEPT		code	
				angles	.XXX±.0020/0.XXX±0.051			product family	PwrBlade	213	
				dr	SLUO 3/12/05	scale	1:1	size	dwg no	A 51940-130	
				enr	SLUO 3/12/05			sheet	4 of 4		
				chr	VICTOR LIN 3/12/05						
				appd	Joseph Hsia 3/12/05						
sheet index	revision sheet										

1 | 2

Pro/E

PDM: Rev: B

STATUS: Released

Printed: Dec 20, 2010

Tous droits strictement reserves. Reproduction ou communication a des tiers interdite sous quelque forme que ce soit sans autorisation ecrite du proprietaire. Propriete de c FCI. Droits de reproduction FCI.



All rights strictly reserved. Reproduction or issue to third parties, in any form whatsoever is not permitted without written authority from the proprietor. Property of FCI. Copyright FCI.