

Excellent Integrated System Limited

Stocking Distributor

Click to view price, real time Inventory, Delivery & Lifecycle Information:

[FCI](#)

[51940-278LF](#)

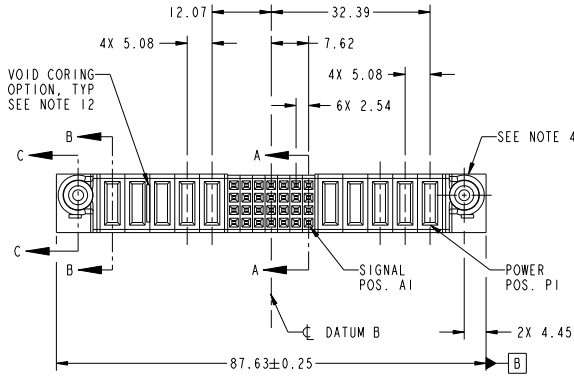
For any questions, you can email us directly:

sales@integrated-circuit.com

Tous droits strictement réservés. Reproduction ou communication à des tiers interdite sans autorisation écrite du propriétaire. Property of FCI. Droits de reproduction FCI.

All rights strictly reserved. Reproduction or issue to third parties in any form whatever is not permitted without written authority from the proprietor. Property of FCI. Copyright FCI.

PRODUCT NO.	ROWS	POWER							SIGNAL							POWER					E1					
		E2	P10	P9	P8	P7	P6	P5	P4	P3	P2	P1	7	6	5	4	3	2	1	P5		P4	P3	P2	P1	
51940-278..	D B A		PF	PF	PF	PF	PF	PF	PF	PF	PF	PF	PF	PF	PF	PF	PF	PF	PF	PF	PF	PF	PF	PF	PF	



CODE	DIM "M" MATING LENGTH	CONTACT TYPE
PF	[2.34]	POWER
F	[N/A]	SIGNAL

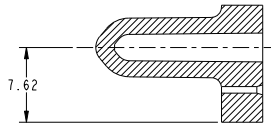
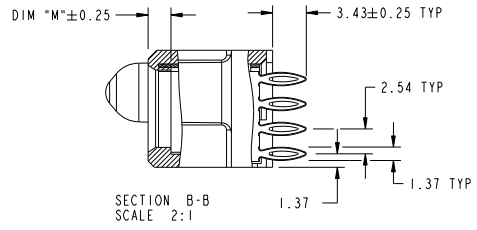
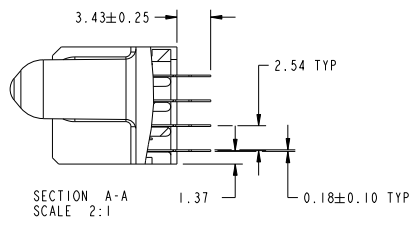
mat'l code				SEE NOTES		tolerances unless otherwise specified		CUSTOMER	
ltr	ecn no.	dr	date	linear	0.X ± 0.5	projection	www.fciconnect.com		
A	DG09-0018	WD	02/04/09	angles	0.XX ± 0.25	MM	title		
				dr	0.XXX ± 0.1	scale	5P + 28S + 5P		
				engr	0° ± 2°	1:1	VERTICAL PRESS.FIT RECEIPT		
				chr			product family		
				oppd			PwrBlade		
sheet index	revision sheet	A 1	A 2	A 3	A 4		size	dwg no	code
							A	51940-278	213
									sheet 1 of 4

CUSTOMER		FCI	
www.fciconnect.com		www.fciconnect.com	
COPY		www.fciconnect.com	
projection		www.fciconnect.com	
MM		www.fciconnect.com	
scale		www.fciconnect.com	
1:1		www.fciconnect.com	
cage code		www.fciconnect.com	
22526		www.fciconnect.com	

Tous droits strictement réservés. Reproduction ou communication à des tiers interdite sous quelque forme que ce soit sans autorisation écrite du propriétaire. Propriété de FCI. Droits de reproduction FCI.

All rights strictly reserved. Reproduction or issue to third parties in any form whatever is not permitted without written authority from the proprietor. Property of FCI. Copyright FCI.

PRODUCT NUMBER
51940-278...
NOTE: 3



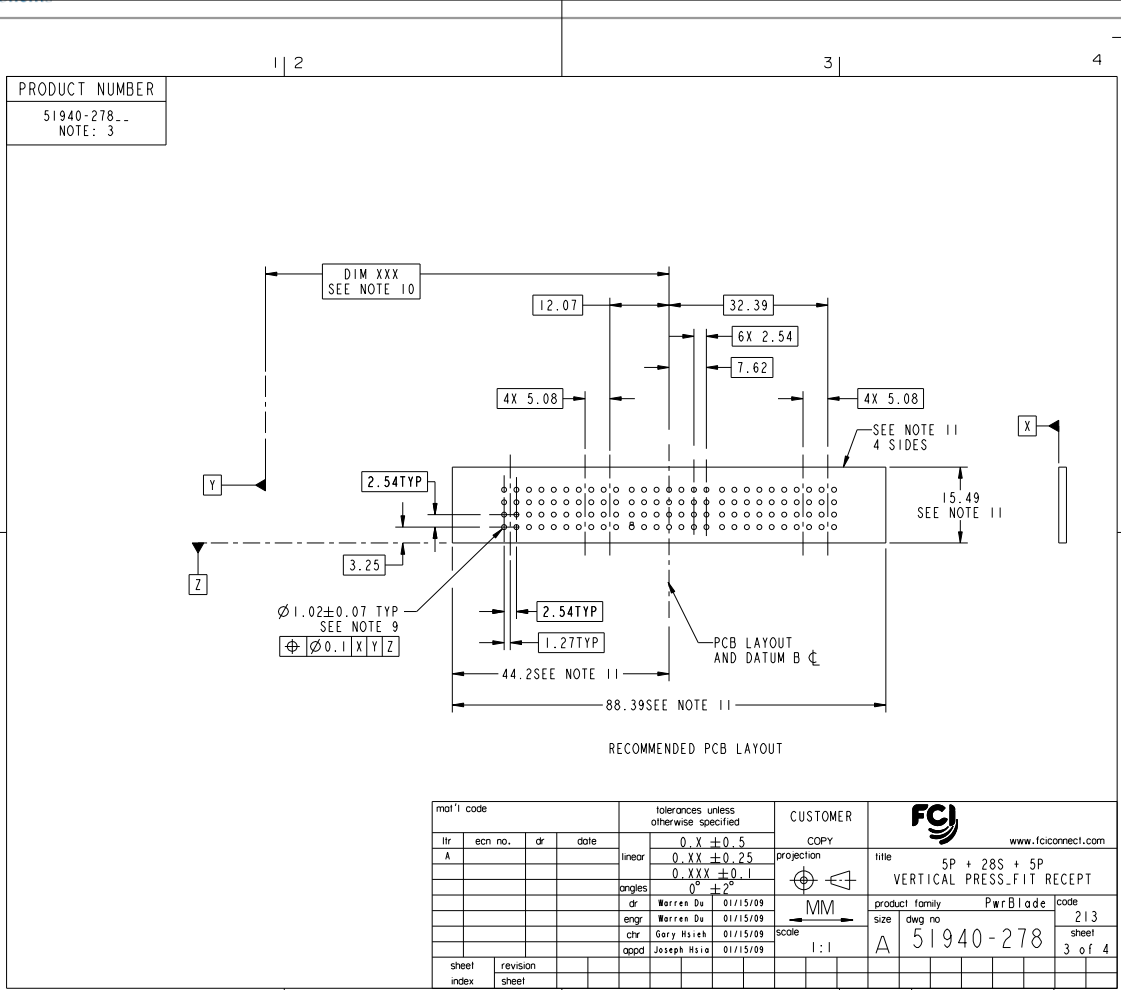
mat'l code				tolerances unless otherwise specified		CUSTOMER	
ltr	ecm no.	dr	date	linear	0.X ±0.5	COPY	FCI www.fciconnect.com
A					0.XX ±0.25	projection	
				angles	0.XXX ±0.1	 MM 	title
				dr	0° ±2°		product family
				enr	Warren Du 01/15/09	size	PwrBlade
				chr	Warren Du 01/15/09	scale	code
				appd	Gary Hsieh 01/15/09	1:1	213
					Joseph Hsia 01/15/09		sheet
sheet index	revision sheet						2 of 4

Pro/E

cage code 22526

Tous droits strictement réservés. Reproduction ou communication à des tiers interdite sous quelque forme que ce soit sans autorisation écrite du propriétaire. Propriété de FCI. Droits de reproduction FCI.

All rights strictly reserved. Reproduction or issue to third parties in any form whatever is not permitted without written authority from the proprietor. Property of FCI. Copyright FCI.



mat'l code				tolerances unless otherwise specified		CUSTOMER	
ltr	ecm no.	dr	date	linear	0.X ±0.5	projection	www.fciconnect.com
A					0.XX ±0.25	MM	5P + 28S + 5P
				angles	0.XXX ±0.1	scale	VERTICAL PRESS.FIT RECEIPT
				dr	0° ±2°	size	PwrBlade
				engr	Warren Du 01/15/09	dwg no	213
				chr	Warren Du 01/15/09	51940-278	3 of 4
				oppd	Gary Hsieh 01/15/09		
					Joseph Hsia 01/15/09		
sheet index	revision sheet						

Tous droits strictement réservés. Reproduction ou communication à des tiers interdite sous quelque forme que ce soit sans autorisation écrite du propriétaire. Propriété de FCI. Droits de reproduction FCI.

All rights strictly reserved. Reproduction or issue to third parties in any form whatever is not permitted without written authority from the proprietor. Property of FCI. Copyright FCI.

PRODUCT NUMBER
51940-278..
NOTE: 3

NOTES:

1. DIMENSIONS AND TOLERANCES ARE IN ACCORDANCE WITH ASME Y14.5M, 1994 UNLESS OTHERWISE SPECIFIED.

CONNECTOR NOTES:

- ② HOUSING MATERIAL: UL 94 V-0 GLASS FILLED HIGH-TEMP THERMOPLASTIC
POWER CONTACT MATERIAL: COPPER ALLOY
SIGNAL PIN MATERIAL: COPPER ALLOY
- 3. SEE ITEM 7 & 8 IN PRINT 10064183 FOR PLATING SPEC OF 51940-278 AND 51940-278LF RESPECTIVELY.
- ④ MANUFACTURER'S NAME, P/N, AND DATE CODE TO APPEAR ON THIS SURFACE.
- 5. PRODUCT SPECIFICATION GS-12-149.
APPLICATION SPECIFICATION BUS-20-067.
- 6. PACKAGED IN TRAYS.
- PCB NOTES:
- 7. ALL HOLE DIAMETERS ARE FINISHED HOLE SIZE.
- ⑧ MOUNTING HOLES, WHERE APPLICABLE, ARE UNPLATED.
- ⑨ $\varnothing 1.151 \pm 0.025$ DRILLED HOLES PLATED WITH 0.008 MIN SnPb OR Sn OVER 0.03 TO 0.08 Cu PLATING TO ACHIEVE $\varnothing 1.02 \pm 0.07$ HOLE.
- ⑩ "DIM XXX" TO BE DETERMINED BY THE CUSTOMER.
- ⑪ CONNECTOR KEEP-OUT ZONE.
- 12. THE VOID CORING IN BETWEEN POWER MODULES, SIGNAL MODULES AND END MODULES ARE OPTIONAL AND THE SHAPE MAY BE DIFFERENT FOR OPTIMIZE THE MOLDING PROCESS. THE VOID CORING WILL NOT EFFECT TO PRODUCT FUNCTION.

mat'l code				tolerances unless otherwise specified		CUSTOMER		FCI	
ltr	ecm no.	dr	date	linear	0.X ± 0.5	COPY		www.fciconnect.com	
A				linear	0.XX ± 0.25	projection	title		
				angles	0° ± 2°		5P + 28S + 5P		
				dr	Warren Du 01/15/09		VERTICAL PRESS-FIT RECEIPT		
				engr	Warren Du 01/15/09	scale	product family	PwrBlade	code
				chr	Gary Hsieh 01/15/09	1:1	size	dwg no	213
				oppd	Joseph Hsia 01/15/09		A	51940-278	sheet
sheet index	revision sheet								4 of 4

Pro/E

cage code 22526