

Excellent Integrated System Limited

Stocking Distributor

Click to view price, real time Inventory, Delivery & Lifecycle Information:

[FCI](#)
[51940-282LF](#)

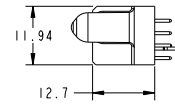
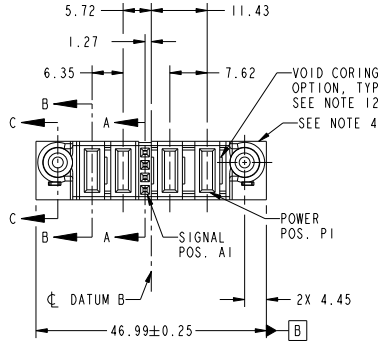
For any questions, you can email us directly:

sales@integrated-circuit.com

Tous droits strictement réservés. Reproduction ou communication à des tiers interdite sans autorisation écrite du propriétaire. Propriété de FCI. Droits de reproduction FCI.

All rights strictly reserved. Reproduction or issue to third parties in any form whatever is not permitted without written authority from the proprietor. Property of FCI. Copyright FCI.

PRODUCT NO.	ROWS	POWER				POWER		
		E2	P4	P3	P1	P2	P1	E1
51940-282... NOTE: 3	2							



CODE	DIM "M" MATING LENGTH	CONTACT TYPE
E	[N/A]	SIGNAL
PD	[2.34]	POWER
HA	[N/A]	HOLD-DOWN

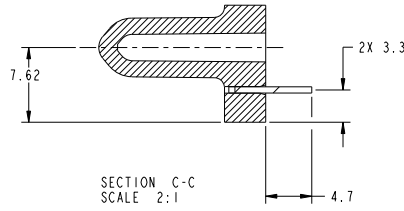
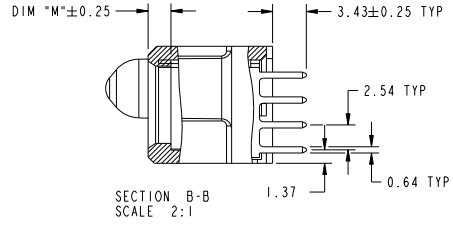
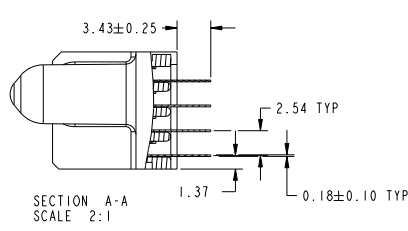
mat'l code				SEE NOTES	tolerances unless otherwise specified	CUSTOMER	FCI
ltr	ecm no.	dr	date	linear	0.X ± 0.5	COPY	www.fciconnect.com
A	DG09-0038	WD	02/18/09	angles	0.XX ± 0.25	projection	
				dr	0.XXX ± 0.1	MM	title
				engr	0° ± 2°	scale	2ACP + 4S + 2P VERTICAL SOLDER RECEPT
				chr	Warren Du 02/17/09	1:1	product family
				oppd	Warren Du 02/17/09		PwrBlade
					Gary Hsieh 02/17/09		size
					Joseph Hsiao 02/17/09		dwg no
sheet index	revision sheet	A 1	A 2	A 3	A 4		51940-282
							code
							213
							sheet
							1 of 4
							code
							22526

Tous droits strictement réservés. Reproduction ou communication à des tiers interdite sous quelque forme que ce soit sans autorisation écrite du propriétaire. Propriété de FCI. Droits de reproduction FCI.

All rights strictly reserved. Reproduction or issue to third parties in any form whatever is not permitted without written authority from the proprietor. Property of FCI. Copyright FCI.



PRODUCT NUMBER
51940-282...
NOTE: 3



mat'l code				tolerances unless otherwise specified		CUSTOMER		FCI	
ltr	ecm no.	dr	date	linear	0.X ±0.5	COPY	www.fciconnect.com		
A					0.XX ±0.25	projection		title	
					0.XXX ±0.1			2ACP + 4S + 2P	
				angles	0° ±2°			VERTICAL SOLDER RECEPT	
		dr	Warren Du		02/11/09	scale		product family	PwrBlade
		enr	Warren Du		02/11/09	1:1		size	A
		chr	Gary Hsieh		02/11/09			dwg no	51940-282
		oppd	Joseph Hsia		02/11/09			code	213
sheet index	revision sheet							sheet	2 of 4

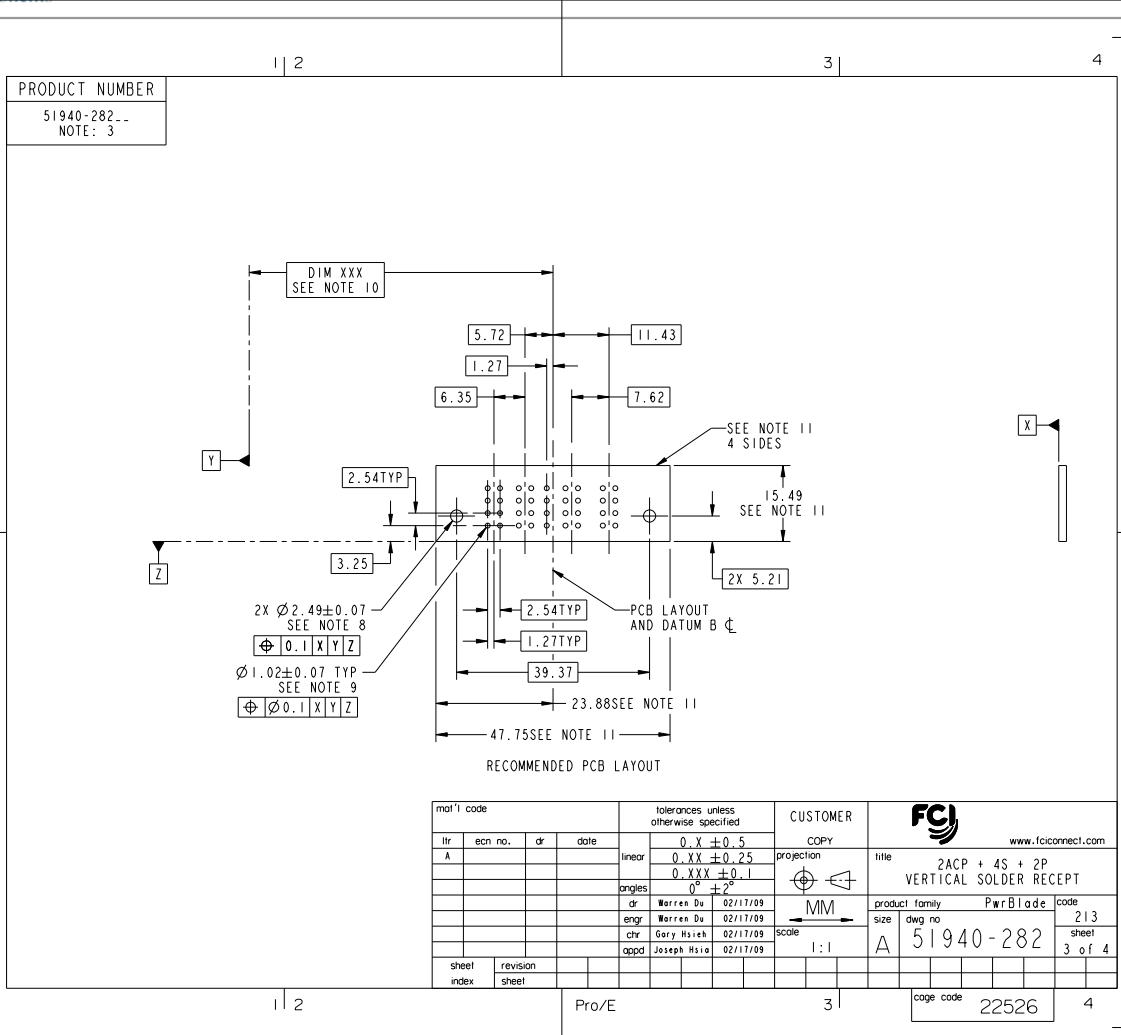
Pro/E

cage code 22526

Tous droits strictement réservés. Reproduction ou communication de des tiers interdite sous quelque forme que ce soit sans autorisation écrite du propriétaire. Propriété de FCI. Droits de reproduction FCI.



All rights strictly reserved. Reproduction or issue to third parties in any form whatever is not permitted without written authority from the proprietor. Property of FCI. Copyright FCI.



Tous droits strictement réservés. Reproduction ou communication à des tiers interdite sous quelque forme que ce soit sans autorisation écrite du propriétaire. Propriété de FCI. Droits de reproduction FCI.

All rights strictly reserved. Reproduction or issue to third parties in any form whatever is not permitted without written authority from the proprietor. Property of FCI. Copyright FCI.

PRODUCT NUMBER
51940-282_
NOTE: 3

- NOTES:
- DIMENSIONS AND TOLERANCES ARE IN ACCORDANCE WITH ASME Y14.5M, 1994 UNLESS OTHERWISE SPECIFIED.
- CONNECTOR NOTES:
- HOUSING MATERIAL: UL 94 V-0 GLASS FILLED HIGH-TEMP THERMOPLASTIC
POWER CONTACT MATERIAL: COPPER ALLOY
SIGNAL PIN MATERIAL: COPPER ALLOY
 - SEE ITEM 5 & 6 IN PRINT 10064183 FOR PLATING SPEC OF 51940-282 AND 51940-282LF RESPECTIVELY.
 - MANUFACTURER'S NAME, P/N, AND DATE CODE TO APPEAR ON THIS SURFACE.
 - PRODUCT SPECIFICATION GS-12-149.
APPLICATION SPECIFICATION BUS-20-067.
 - PACKAGED IN TRAYS.
- PCB NOTES:
- ALL HOLE DIAMETERS ARE FINISHED HOLE SIZE.
 - MOUNTING HOLES, WHERE APPLICABLE, ARE UNPLATED.
 - $\varnothing 1.151 \pm 0.025$ DRILLED HOLES PLATED WITH
0.008 MIN SnPb OR Sn OVER 0.03
TO 0.08 Cu PLATING TO ACHIEVE
 $\varnothing 1.02 \pm 0.07$ HOLE.
 - "DIM XXX" TO BE DETERMINED BY THE CUSTOMER.
 - CONNECTOR KEEP-OUT ZONE.
 - THE VOID CORING IN BETWEEN POWER MODULES, SIGNAL MODULES AND END MODULES ARE OPTIONAL AND THE SHAPE MAY BE DIFFERENT FOR OPTIMIZE THE MOLDING PROCESS. THE VOID CORING WILL NOT EFFECT TO PRODUCT FUNCTION.

mat'l code				tolerances unless otherwise specified		CUSTOMER		FCI	
ltr	ecm no.	dr	date	linear	0.X ± 0.5	COPY		www.fciconnect.com	
A					0.XX ± 0.25	projection	title		
				angles	0.XXX ± 0.1		2ACP + 4S + 2P VERTICAL SOLDER RECEPT		
				dr	0° ± 2°		product family	PwrBlade	code
				enr	Warren Du 02/11/09	scale	size	dwg no	213
				chr	Warren Du 02/11/09	1:1	A	51940-282	sheet
				oppd	Gary Hsieh 02/11/09				4 of 4
					Joseph Hsia 02/11/09				
sheet index	revision sheet								

Pro/E 3 cage code 22526 4