

Excellent Integrated System Limited

Stocking Distributor

Click to view price, real time Inventory, Delivery & Lifecycle Information:

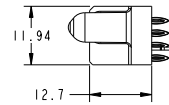
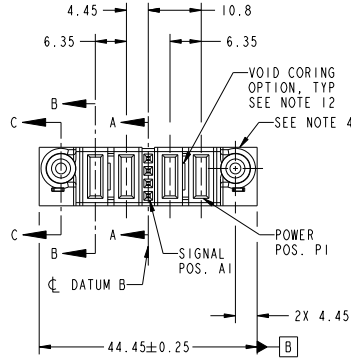
[FCI](#)
[51940-298LF](#)

For any questions, you can email us directly:
sales@integrated-circuit.com

Tous droits strictement réservés. Reproduction ou communication à des tiers interdite sous quelque forme que ce soit sans autorisation écrite du propriétaire. Propriété de FCI. Droits de reproduction FCI.

All rights strictly reserved. Reproduction or issue to third parties in any form whatever is not permitted without written authority from the proprietor. Property of FCI. Copyright FCI.

PRODUCT NO.	ROWS	POWER		POWER				
		E2	P4	P3	P1	P2	P1	E1
51940-298.. NOTE: 3	VOID							



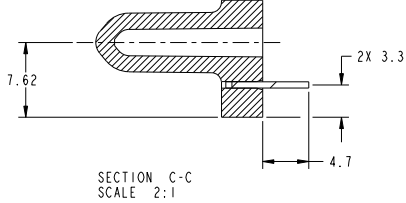
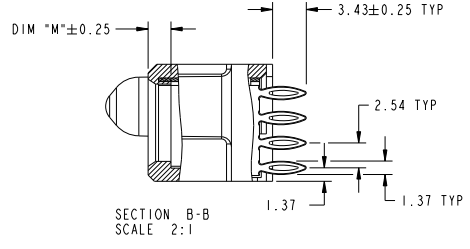
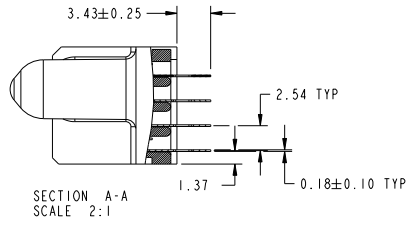
CODE	DIM "M" MATING LENGTH	CONTACT TYPE
PF	[2.34]	POWER
F	[N/A]	SIGNAL
HA	[N/A]	HOLD-DOWN
PC	[1.07]	POWER

mat'l code				SEE NOTES	tolerances unless otherwise specified	CUSTOMER	FCI
ltr	ecm no.	dr	date	linear	0.X ±0.5	COPY	www.fciconnect.com
A	DG09-0170	WD	05/26/09	angles	0.XX ±0.25	projection	
				dr	0.XXX ±0.1	MM	title
				enr	0° ±2°	MM	2P + 4S + 2P
				chr	Warren Du 05/14/09	MM	VERTICAL PRESS-FIT RECEIPT
				oppd	Warren Du 05/14/09	MM	product family
					PM ZHENG 05/14/09	MM	PwrBlade
					Joseph Hsiao 05/14/09	MM	code
sheet index	revision sheet	A	A	A	A	scale	size
		1	2	3	4	1:1	dwg no
							51940-298
							213
							sheet
							1 of 4
							code
							22526

Tous droits strictement réservés. Reproduction ou communication à des tiers interdite sous quelque forme que ce soit sans autorisation écrite du propriétaire. Propriété de FCI. Droits de reproduction FCI.

All rights strictly reserved. Reproduction or issue to third parties in any form whatever is not permitted without written authority from the proprietor. Property of FCI. Copyright FCI.

PRODUCT NUMBER
51940-298...
NOTE: 3



mat'l code				tolerances unless otherwise specified		CUSTOMER		FCI	
ltr	ecm no.	dr	date	linear	0.X ±0.5	COPY	www.fciconnect.com		
A					0.XX ±0.25	projection		title	
					0.XXX ±0.1			2P + 4S + 2P	
				angles	0° ±2°			VERTICAL PRESS-FIT RECEIPT	
		dr	Warren Du	05/14/09		scale		product family	PwrBlade
		enr	Warren Du	05/14/09		1:1		size	
		chr	PM ZHENG	05/14/09				dwg no	51940-298
		appd	Joseph Hsiao	05/14/09				code	213
sheet index	revision sheet							sheet	2 of 4

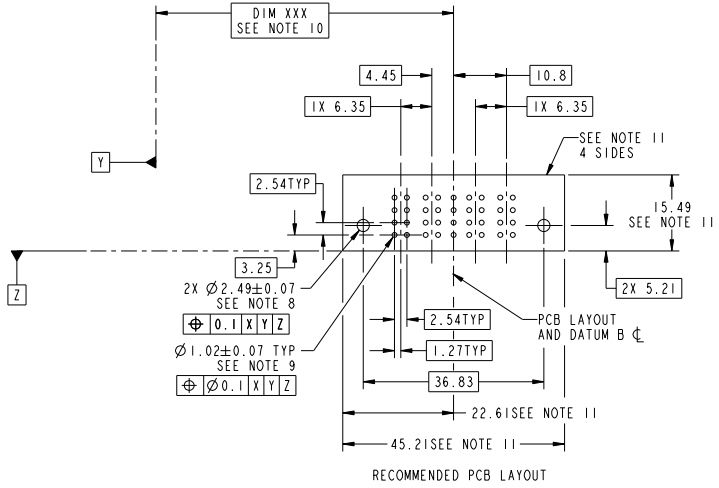
Pro/E

cage code 22526

Tous droits strictement réservés. Reproduction ou communication à des tiers interdite sous quelque forme que ce soit sans autorisation écrite du propriétaire. Propriété de FCI. Droits de reproduction FCI.

All rights strictly reserved. Reproduction or issue to third parties in any form whatever is not permitted without written authority from the proprietor. Property of FCI. Copyright FCI.

PRODUCT NUMBER
51940-298...
NOTE: 3



mat'l code				tolerances unless otherwise specified		CUSTOMER	
ltr	ecn no.	dr	date	linear	0.X ± 0.5	COPY	www.fciconnect.com
A				angles	0.XX ± 0.25	projection	
				dr	0.XXX ± 0.1	MM	title
				engr	0° ± 2°	scale	2P + 4S + 2P
				chr		1:1	VERTICAL PRESS-FIT RECEIPT
				appd			product family
sheet index	revision sheet						PwrBlade
							code
							213
							sheet
							3 of 4
							code
							22526

Tous droits strictement réservés. Reproduction ou communication à des tiers interdite sous quelque forme que ce soit sans autorisation écrite du propriétaire. Propriété de FCI. Droits de reproduction FCI.

All rights strictly reserved. Reproduction or issue to third parties in any form whatever is not permitted without written authority from the proprietor. Property of FCI. Copyright FCI.



PRODUCT NUMBER
 51940-298_
 NOTE: 3

NOTES:

1. DIMENSIONS AND TOLERANCES ARE IN ACCORDANCE WITH ASME Y14.5M, 1994 UNLESS OTHERWISE SPECIFIED.
- CONNECTOR NOTES:
- ② HOUSING MATERIAL: UL 94 V-0 GLASS FILLED HIGH-TEMP THERMOPLASTIC
 POWER CONTACT MATERIAL: COPPER ALLOY
 SIGNAL PIN MATERIAL: COPPER ALLOY
3. SEE ITEM 7 & 8 IN PRINT 10064183 FOR PLATING SPEC OF 51940-298 AND 51940-298LF RESPECTIVELY.
- ④ MANUFACTURER'S NAME, P/N, AND DATE CODE TO APPEAR ON THIS SURFACE.
5. PRODUCT SPECIFICATION GS-12-149.
 APPLICATION SPECIFICATION BUS-20-067.
6. PACKAGED IN TRAYS.
- PCB NOTES:
7. ALL HOLE DIAMETERS ARE FINISHED HOLE SIZE.
- ⑧ MOUNTING HOLES, WHERE APPLICABLE, ARE UNPLATED.
- ⑨ $\varnothing 1.151 \pm 0.025$ DRILLED HOLES PLATED WITH
 0.008 MIN SnPb OR Sn OVER 0.03
 TO 0.08 Cu PLATING TO ACHIEVE
 $\varnothing 1.02 \pm 0.07$ HOLE.
- ⑩ "DIM XXX" TO BE DETERMINED BY THE CUSTOMER.
- ⑪ CONNECTOR KEEP-OUT ZONE.
12. THE VOID CORING IN BETWEEN POWER MODULES, SIGNAL MODULES AND END MODULES ARE OPTIONAL AND THE SHAPE MAY BE DIFFERENT FOR OPTIMIZE THE MOLDING PROCESS. THE VOID CORING WILL NOT EFFECT TO PRODUCT FUNCTION.

mat'l code				tolerances unless otherwise specified		CUSTOMER		FCI	
ltr	ecm no.	dr	date			COPY	www.fciconnect.com		
A				linear	0.X ± 0.5	projection		title	
					0.XX ± 0.25			2P + 4S + 2P	
				angles	0.XXX ± 0.1			VERTICAL PRESS-FIT RECEIPT	
				dr	0° ± 2°	scale		product family	PwrBlade
				dr	Warren Du 05/14/09	1:1		size	A
				engr	Warren Du 05/14/09			dwg no	51940-298
				chr	PM ZHENG 05/14/09			code	213
				oppd	Joseph Hsia 05/14/09			sheet	4 of 4
sheet index	revision sheet								

Pro/E

cage code 22526